

# NEWMAR CORPORATION

## WARRANTY DEPARTMENT

# TECHNICAL SERVICE BULLETIN

DATE ISSUED	MODEL YEAR(S) AFFECTED	TSB #
5/26/2017	2017	480

### MODEL

Bay Star Sport	<input type="checkbox"/>	Ventana	<input type="checkbox"/>	Essex	<input type="checkbox"/>
Bay Star	<input type="checkbox"/>	Dutch Star	<input checked="" type="checkbox"/>	King Aire	<input type="checkbox"/>
Canyon Star	<input type="checkbox"/>	Mountain Aire	<input type="checkbox"/>	New Aire	<input type="checkbox"/>
Ventana LE	<input type="checkbox"/>	London Aire	<input type="checkbox"/>	Other	<input type="checkbox"/>

### DESCRIPTION

Spartan Motors USA, Inc. has decided that a condition exists where the power steering pumps may be equipped with an incorrectly sized orifice. Spartan Motors USA, Inc. made the decision to issue a Campaign Service Bulletin, **CSB17-260-001**, for certain 2017 model year K2 motor home chassis built between August 22, 2016, and October 5, 2016. In response, Newmar Corporation is publishing TSB 480.

**Issue:** The chassis power steering orifice may be the incorrect size. By performing the enclosed campaign, we can be certain that you have the best product available for optimal performance.

**Correction:** Spartan service centers will install the correct size orifice if necessary.

**Affected Units:** Refer to the attached population list for specific coach and VIN numbers.

### RECOMMENDED ACTION

**Repair Procedure:** Contact Spartan to schedule the corrective procedure at an authorized Spartan Service Facility. Spartan has provided the attached work instructions. Although **this is not a safety recall**, Spartan is committed to serving you with your best interests in mind. Contact Spartan's Customer and Product Support department to obtain the work authorization number and warranty parts needed for this repair at (855)589-9836.

**Flat Rate Code:** TSB 480

**Labor Time:** 2.0 hrs. (as determined by Spartan)

**Note:** Newmar will not authorize this repair. Spartan Motors will authorize and schedule this repair. If you need help contacting Spartan Motors, call Newmar at (866)290-5371 for assistance.

***Please read this bulletin in its entirety prior to beginning any diagnosis or repairs.***



**DATE:** 5-19-17

**APPLIES TO:** This service bulletin applies to 2017 Model Year K2 motor home chassis built between August 22, 2016 and October 5, 2016.

**CONDITION:** Power steering pumps may be equipped with an incorrectly-sized orifice.

**CORRECTION:** Install new orifice.

**LABOR ALLOCATION:** 2 hrs.

**CLASSIFICATION:** V3

**PARTS NEEDED:**

<u>QTY</u>	<u>Part Number</u>	<u>Description</u>
1	S-2583-001	Kit-Pump, Fan/Strg. Orifice

**Kit # S-2583-001 Contains:**

<u>QTY</u>	<u>Part Number</u>	<u>Description</u>
1	2725-FF1-001	Orifice – Pump, Fan/Strg. 4mm
1	CSB17-260-001	Instruction Document

**TOOLS NEEDED**

- Torque wrench capable of 75 lbf-ft.
- Needle Nose Pliers
- 8mm Hex Socket
- 30mm Socket
- 18mm Socket
- Snap Ring Pliers

**GENERAL INSTRUCTIONS:**

Thoroughly review entire service bulletin before starting work. If there are questions or concerns with steps defined in this service bulletin, contact Spartan Motors USA, Inc. Customer & Product Support Group. 800-543-4277.

Service Bulletins are intended for use by Professional Technicians only. They are written to guide Professional Technicians in performing service to vehicles of specific nature in conjunction with industry standards. Professional Technicians should be appropriately trained on industry standards and have the tools and equipment to perform procedures safely and properly.



All applicable industry safety standards **must** be followed when performing work identified in this procedure.

**STEP-BY-STEP INSTRUCTIONS:**

**⚠ WARNING**

**MAKE SURE ENGINE IS OFF, KEY IS OUT OF THE IGNITION, AND THE VEHICLE IS TAGGED NOT TO START/OPERATE, FOR YOUR SAFETY.**

**ALLOW HYDRAULIC SYSTEM TEMPERATURE TO COOL BEFORE STARTING WORK.**

**WHEN BREACHING THE HYDRAULIC SYSTEM, BE SURE TO NOT LET ANY CONTAMINANTS SUCH AS DIRT, DEBRIS, ETC. TO ENTER THE SYSTEM. CONTAMINANTS MAY CAUSE FAILURE OF THE HYDRAULIC SYSTEM.**

1. Remove the power steering pump support bracket from the pump & the engine block by removing bolts 1 & 2, allowing access to the hex head cover as viewed from bottom. Retain for re-use. Refer to FIG. 2-1

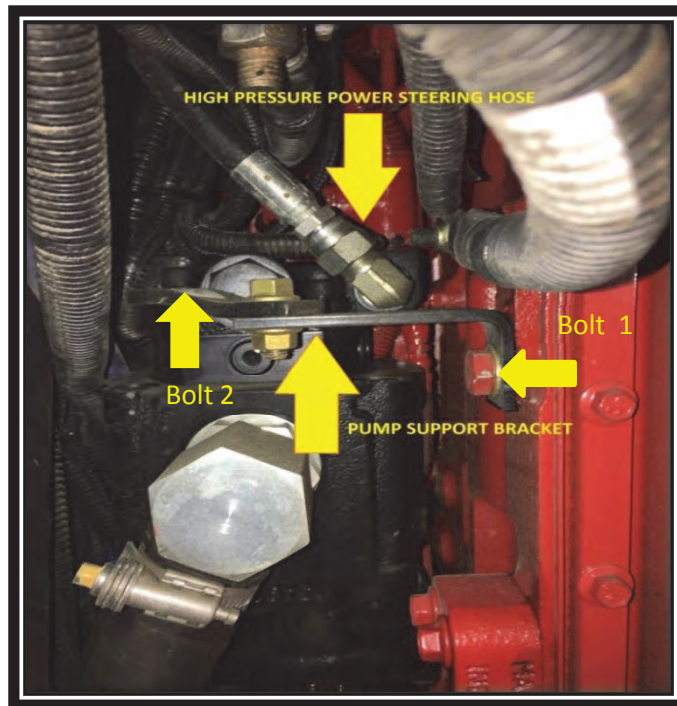


FIG. 2-1

Service Bulletins are intended for use by Professional Technicians only. They are written to guide Professional Technicians in performing service to vehicles of specific nature in conjunction with industry standards. Professional Technicians should be appropriately trained on industry standards and have the tools and equipment to perform procedures safely and properly.



2. Clean lower surface areas on pump with any available degreasing product to ensure that the pump is not susceptible to contamination once opened.
3. Install the 30mm socket on the hex head cover and remove the cover shown. NOTE: The cover will be under a slight spring pressure. Refer to FIG. 3-1.

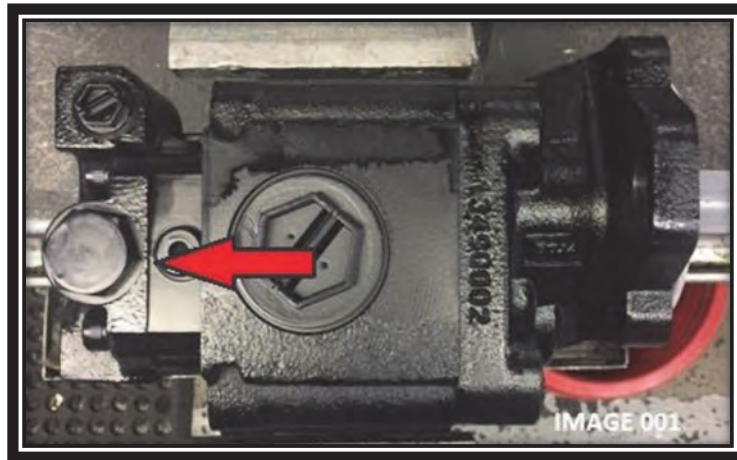


FIG. 3-1

4. Once the cover is removed you will have exposed both the spool and spring. Remove the spring and place in a clean, dry location. Retain for re-use. NOTE: Some oil will drain from this location upon removal of the cap. Be prepared as the spool may slide out on its' own due to gravity. Refer to FIG. 3-2.

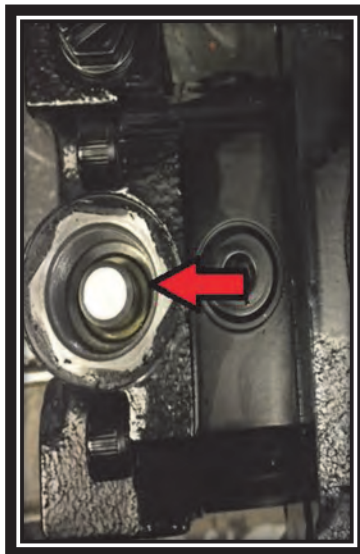


FIG. 3-2

Service Bulletins are intended for use by Professional Technicians only. They are written to guide Professional Technicians in performing service to vehicles of specific nature in conjunction with industry standards. Professional Technicians should be appropriately trained on industry standards and have the tools and equipment to perform procedures safely and properly.



- Once the spring is removed, use the Needle Nose Pliers to remove the spool shown. **NOTE: It is important to reference that the position of the spool is with the orifice facing away from you.** Refer to FIG. 4-1.



FIG. 4-1

- Re-install retained hex head cover to minimize oil loss. This can be hand tightened.
- Once the spool is removed, flip it over to expose the snap ring. Using the snap ring pliers remove the snap ring. Refer to FIG. 4-2 and FIG. 4-3.

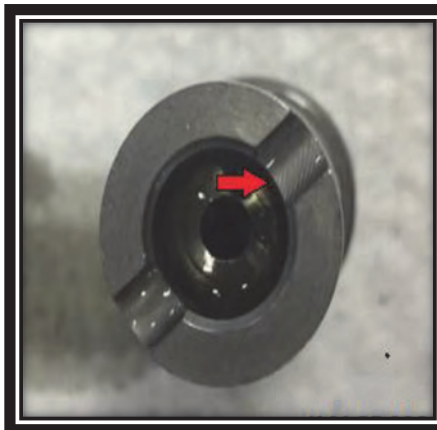


FIG. 4-2

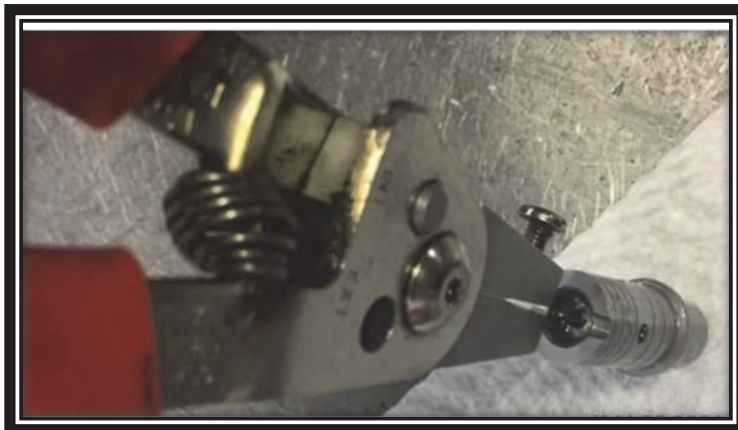


FIG. 4-3

Service Bulletins are intended for use by Professional Technicians only. They are written to guide Professional Technicians in performing service to vehicles of specific nature in conjunction with industry standards. Professional Technicians should be appropriately trained on industry standards and have the tools and equipment to perform procedures safely and properly.



8. With the snap ring removed, tap spool against palm of your hand to remove orifice disc. Note orientation of orifice in spool. Once removed, properly dispose of original orifice disc.
9. Remove certified orifice disc from packaging and install into the spool. Ensure that orientation is as per the original orifice disc.
10. Insert snap ring into the groove on the inside of the spool locking the orifice disc in place.  
**NOTE:** Use the snap ring pliers to spin the snap ring to ensure it is properly seated within the groove.
11. Remove hex head cover and insert spool into pump ensuring orifice disc is pointing away from you.
12. Replace the spring over top of the spool.
13. Reinstall hex head cover and torque to 90 NM (66.4 lbf-ft). Refer to FIG. 6-1.
14. Re-install retained pump support bracket to following specifications.

**NOTE: For the following instructions apply Loctite® 242® Thread locker to the bolt on the first five threads from end of bolt.**

- Bolt #1 – Tighten to 47 lbf- ft torque with **Loctite® 242®**.
- Bolt #2 – Tighten to 52 lbf- ft torque.

Service Bulletins are intended for use by Professional Technicians only. They are written to guide Professional Technicians in performing service to vehicles of specific nature in conjunction with industry standards. Professional Technicians should be appropriately trained on industry standards and have the tools and equipment to perform procedures safely and properly.

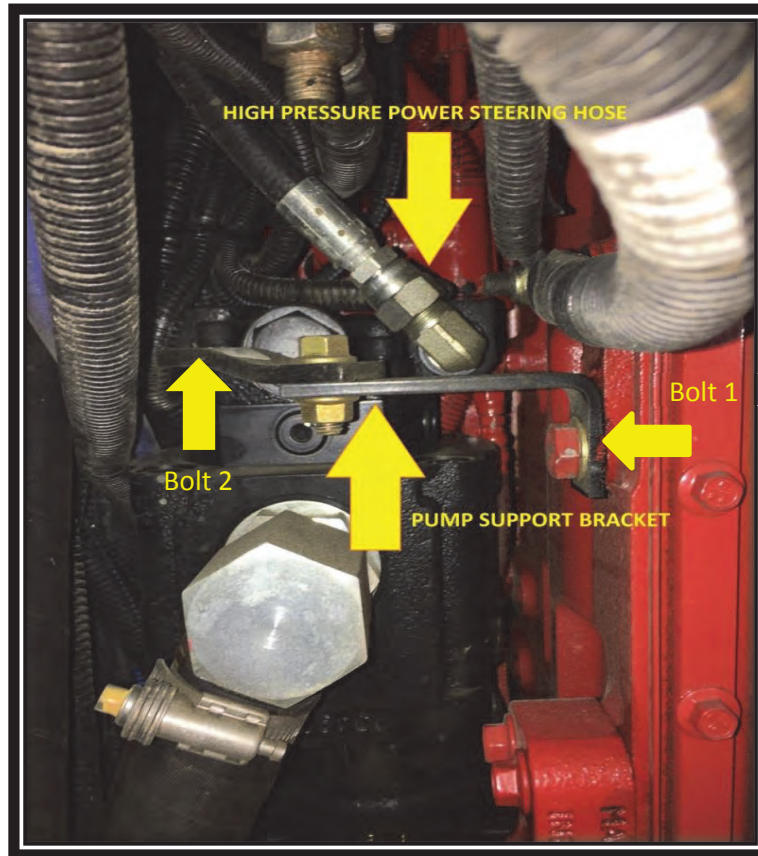


FIG. 6-1

15. Check oil level in the hydraulic reservoir and fill as needed per the dipstick. Use quality petroleum based ISO46 anti-wear hydraulic oil (AW-46).

16. Start the vehicle and bleed air out of hydraulic system by:

- A. Fill the reservoir nearly full, do not steer. Start and run engine for 10 seconds, then shut off. Check and refill the reservoir. Repeat at least three times, checking the reservoir each time.

**CAUTION** Do not allow the fluid level to drop significantly or run out of the reservoir. This may induce air into the system.

- B. Start the engine and let it idle for 2 minutes, do not steer. Shut off the engine and check the fluid level in the reservoir, refill as required.

Service Bulletins are intended for use by Professional Technicians only. They are written to guide Professional Technicians in performing service to vehicles of specific nature in conjunction with industry standards. Professional Technicians should be appropriately trained on industry standards and have the tools and equipment to perform procedures safely and properly.



- C. Start the engine again. Steer the vehicle from full left to right several times. Add fluid as necessary to the full line on the dipstick. Automatic bleed systems should now be free from trapped air.
- D. Run motorhome to verify power assist is present when turning the steering wheel and check for leaks.

17. After operation, check for any oil leaking from hex head cover. If a leak is present, verify hex head cover is seated properly.

Service Bulletins are intended for use by Professional Technicians only. They are written to guide Professional Technicians in performing service to vehicles of specific nature in conjunction with industry standards. Professional Technicians should be appropriately trained on industry standards and have the tools and equipment to perform procedures safely and properly.

VIN Number	Prod#	Year	Brand	Type	Floor	Chassis	Date	Date
4VZAU1D91HC082661	606218	2017	DS	DP	4369	S	9/7/2016	9/15/2016
4VZAU1D94HC082640	606093	2017	DS	DP	4369	S	9/7/2016	9/15/2016
4VZAU1D93HC082662	606263	2017	DS	DP	4369	S	9/22/2016	9/30/2016
4VZAU1D90HC082666	606210	2017	DS	DP	4326	S	9/28/2016	10/6/2016
4VZAU1D92HC082667	606261	2017	DS	DP	4369	S	9/29/2016	10/6/2016
4VZAU1D92HC082717	606262	2017	DS	DP	4369	S	9/29/2016	10/7/2016
4VZAU1D94HC082718	606264	2017	DS	DP	4369	S	10/3/2016	10/11/2016
4VZAU1D98HC082737	606265	2017	DS	DP	4369	S	10/4/2016	10/11/2016
4VZAU1D9XHC082738	606266	2017	DS	DP	4369	S	10/4/2016	10/12/2016
4VZAU1D90HC082781	606273	2017	DS	DP	4310	S	10/10/2016	10/18/2016
4VZAU1D92HC082782	606274	2017	DS	DP	4326	S	10/11/2016	10/19/2016
4VZAU1D90HC082800	606281	2017	DS	DP	4369	S	10/12/2016	10/20/2016
4VZAU1D90HC082831	606301	2017	DS	DP	4369	S	10/13/2016	10/21/2016
4VZAU1D92HC082801	606284	2017	DS	DP	4369	S	10/13/2016	10/21/2016
4VZAU1D92HC082832	606298	2017	DS	DP	4369	S	10/20/2016	10/27/2016
4VZAU1D98HC082799	606351	2017	DS	DP	4326	S	11/18/2016	11/30/2016
4VZAU1D92HC082829	606299	2017	DS	DP	4369	S	11/22/2016	12/1/2016
4VZAU1D99HC082830	606364	2017	DS	DP	4369	S	11/28/2016	12/6/2016