

L734-
A.07.17

To: Official After Sales Network
Subject: CarPlay Activation
Date: July 14, 2017
Pages: 20



Campaign code.

L734-A.07.17

Subject.

CarPlay Activation

Model.

Aventador S Coupè:

Model year.

2017.

Special or Limited Versions.

All;

Markets.

All.

VIN Identification.

From HLA04772 to VIN HLA06479.

Warning: before starting with the repair, log to the Warranty portal and check through VIN Info:

- The vehicle is effectively involved by these bulletin instructions; some cars may not be included even when they are in the VIN range.
- The procedure identified by a letter (e.g. A, B or C....etc. whose differences are explained below in this bulletin), taking care to order and use the parts corresponding to the assigned procedure.

Example

VIN	17 DIGIT VIN	Model	MODEL NAME	Warranty Start Date	DD/MM/YYYY	Warranty End Date	DD/MM/YYYY
Total days of workshop repairs: 0							
Prior activated CPO list							
CPO	Validity months	Classification	Mileage	Insertion date	Approval date	Start date	Expire date
Claim status							
Available Campaigns							
Campaign Code	Campaign Type	Procedures	Campaign Description	Campaign Starting Date	PDF	AV	
XXX-XXXX	A - Service Action	B	CAMPAIGN NAME	DD/MM/YYYY			



Note

Procedure A will be available only when the instructions require to carry out a preliminary control to determine whether or not a vehicle needs to be updated.

Information to the field.

As a result of continuous product monitoring, Automobili Lamborghini Spa has released a new software, to activate the CarPlay functions.

Field solution

The instruction herein detailed describes the following procedure:

- B, CarPlay activation

Spare parts.

Order the following part number which are connected to the operation required.

P/N	Description	Q
470012788QA	manual	1

Replaced parts management.

Store properly and tagged the parts replaced with bar code form for their identification during Area Manager visits.

Labour time

- Operation B : 2,1 hours;

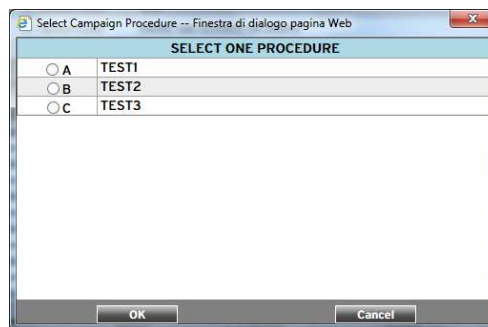
Substituted former Bulletins.

none.

Warranty Claim instructions

To claim the reimbursement log into the warranty system management on the Lamborghini Portal and consults the manual "W.Claim " available on the portal for the download .

Select the desired campaign and go on with the claim insertion, read carefully the windows message content and choose the option button corresponding to the operation performed .



On the base of the chosen option the reimbursement will be:

- OPTION B, CarPlay activation
manpower: -2,1
spare parts: -470012788QA;



ATTENTION!

Attach all documents produced during the vehicle visit that show evidence of the work performed such as repair

L734-
A.07.17

To: Official After Sales Network
Subject: CarPlay Activation
Date: July 14, 2017
Pages: 20



order, software protocols or acquisitions...etc.; the lack of one or more of those, may deny the reimbursement.

Remember to fill all data in the section “Service and Recall Campaign” in the Warranty booklet of the vehicle as shown below.

Necessary tools/material.

P/N	Description	Q
n/a		

Preliminary operations:

1. Make sure to be recently synchronized with Mirrorserver by checking the Last Sync date under:

<http://mirrorserver/maintenance/diagnosis.py>

or directly insterting your Btac-box IP address:

[http://\[IP_address\]/maintenance/diagnosis.py](http://[IP_address]/maintenance/diagnosis.py)

if you have not previously set up the mirror-server IP alias.

(e.g. <http://12.34.567.890/maintenance/diagnosis.py>)



IMPORTANT

Make sure the last synchronization has been done after the 30th of June 2017.

MS/2 Diagnosis

Configuration	
Base path	/var/www/desert
Provider URL	https://altair.mirrorserver2.net/deployment
Repository URL	https://altair.mirrorserver2.net/storage
Feedback URL	https://altair.mirrorserver2.net/health
Proxy	not used
Key file	/var/www/desert/certs/userkey.pem
Certificate	/var/www/desert/certs/usercert.pem
Tests	
Local file/directory permissions	-
Disk space	-
Provider reachable	-
Repository reachable	-
Feedback reachable	-
Provider WebDAV access	-
Repository WebDAV access	-
Feedback WebDAV access	-
Successful package downloads	8
Failed package downloads	0
Last Sync	17/06/27 19:01:29
<input type="button" value="Start tests"/>	

L734-
A.07.17

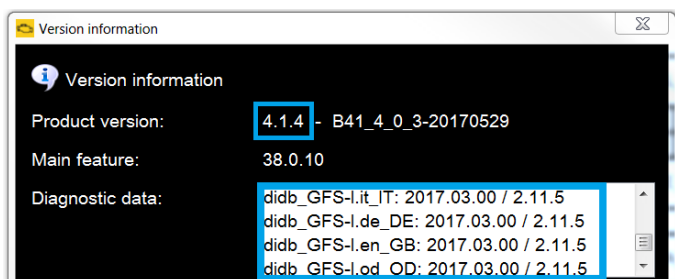
To: **Official After Sales Network**
Subject: **CarPlay Activation**
Date: **July 14, 2017**
Pages: **20**



Work instructions



The instructions contained in this bulletin are based on ODIS Service diagnosis software updated to release 4.1.4 (or following) and database Lamborghini 2.11.5 (please refer to BI.07.15 and be sure that ODIS service on your laptop is up-to-date)



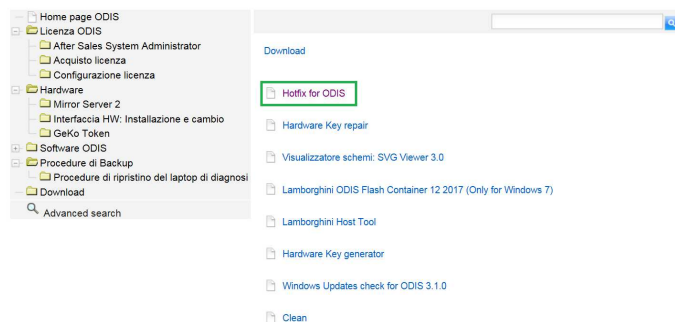
IMPORTANT:

Make sure that the database Lamborghini version is 2.11.5

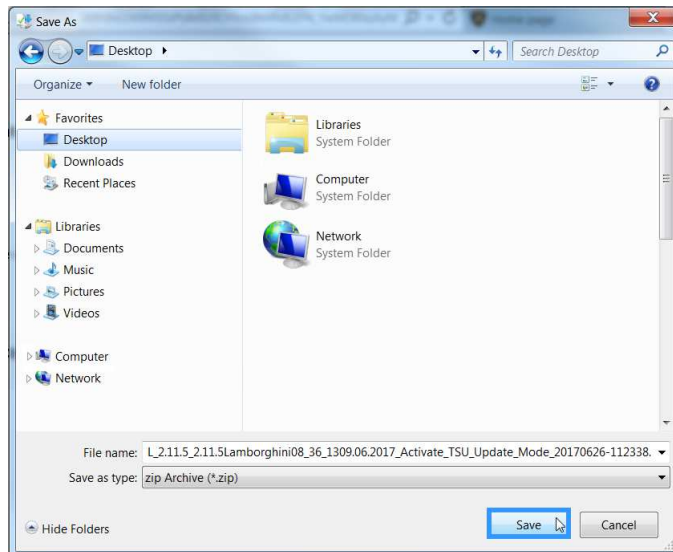
2. First of all you shall download the hotfix named "Hotfix for ODIS". The file can be found in Lamborghini Portal, in the section:

Aftersales\Customer Service\ODIS\Download

Click it to start the download.



3. Click "Save as" and save the file on your desktop.

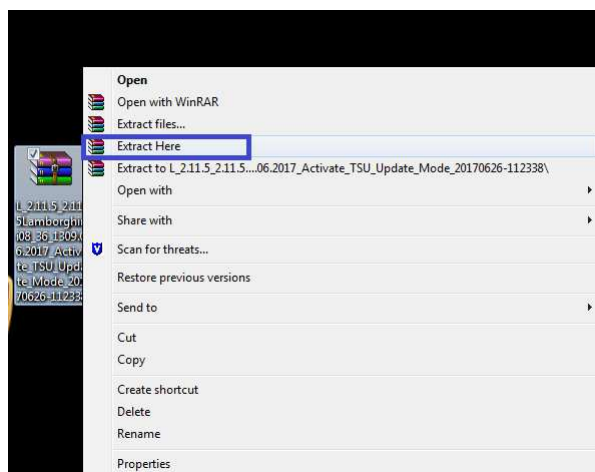


Note:

The complete name of the hotfix when you download the hotfix in your desktop is:

"L_2.11.5_2.11.5Lamborghini08_36_1309.06.2017_Activate_TSU_Update_Mode_20170626-112338".

4. Move on your Desktop, right click on the downloaded file in order to unzip it.

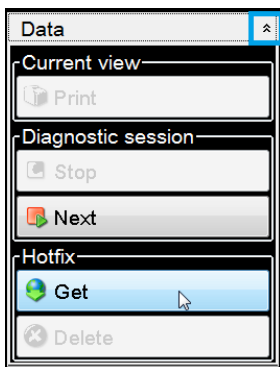
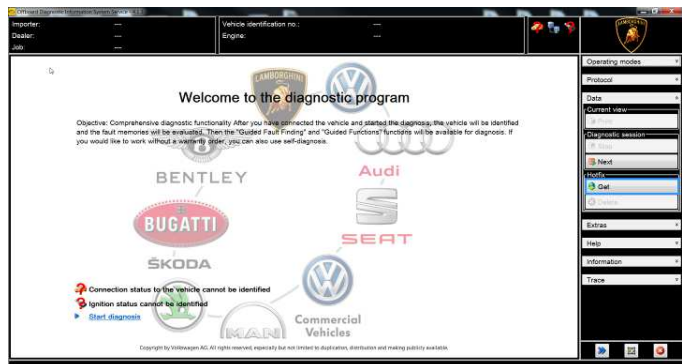


IMPORTANT:

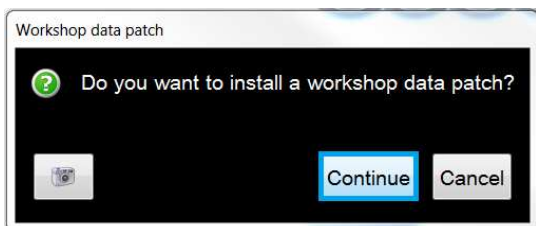
Do not change the file name after unzip operation.



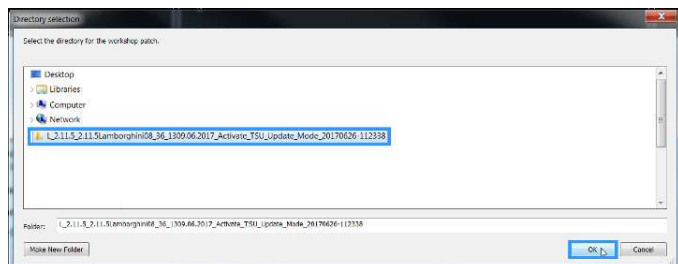
- After having unzipped the file, open ODIS Service, open the Operating Mode “DATA” and click on “GET” under the section Hotfix.



- Click “Continue”.



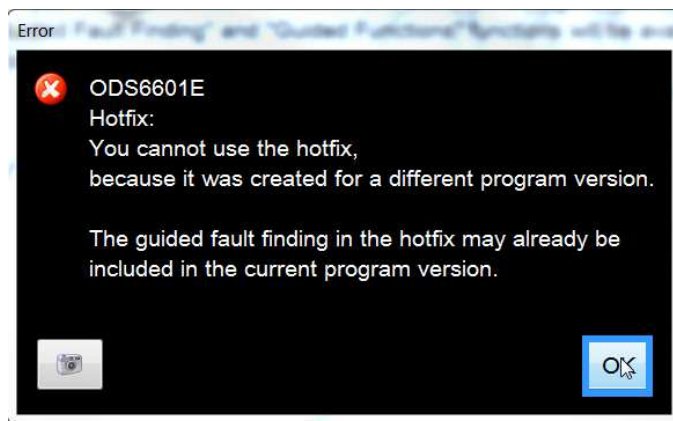
- Select the unzipped hotfix on your Desktop and click “OK” in order to upload it.



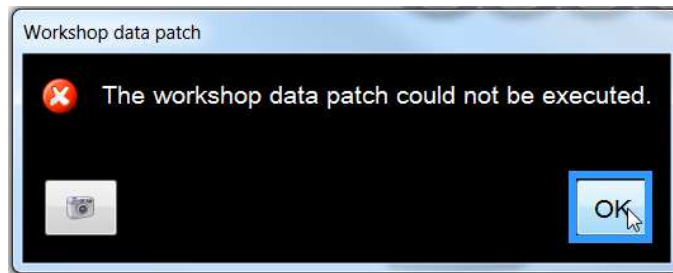
- If the hotfix has been uploaded successfully the following message is shown. Click “Ok”.



- If the following error page occurs, it means that you shall update ODIS Service at the last database Lamborghini 2.11.5. Click “Ok”.



- Click “Ok”.



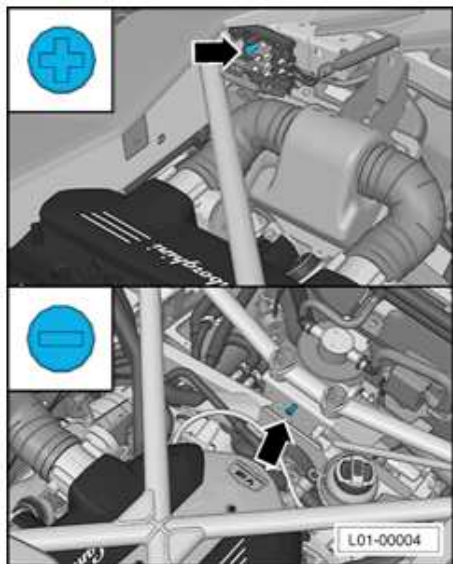
Please update ODIS Service at the current database Lamborghini version 2.11.5.

To verify which program version you have on your laptop open the Operating Mode “Information” and click on “Version”.



Updating Procedure:

11. Please connect a battery charger to the recharge points available in the engine bonnet, as shown in picture.



! IMPORTANT

Instrument cluster ECU has to be updated, it is necessary to take note of distance and days to next service, shown in the instrument cluster menu. (e.g. 3400 km and 200 days)



MMI Update

12. The following table contains the various software versions and control units and USB-sticks/ SD cards related part numbers.

You can verify the ECU part Number of the MMI through Odis Service. (5F_MMI - Guided Function - Identification).

ECU P/N	SW Pre update	SW Post update	SD card P/N	USB key P/N
470.035.662.E	0338	0343	61653000940	61653000945
470.035.664.E	0213	0219	61653000943	61653000945
470.035.666.E	0212	0218	61653000939	61653000945
470.035.678.E	0238	0243	61653000941	61653000945
470.035.754.G	0212	0218	61653000939	61653000945
470.035.756.A	0215	0220	61653000942	61653000945
470.035.774.B	0538	0543	61653000944	61653000945

For example, in order to update the software of the MMI ECU with part number 470.035.662.E, make sure that the SD card part number is 61653000940.

13. Access into update menu with the SETUP + RETURN key combination.





14. When you enter the update menu you will see the version of the software currently installed on the control unit.

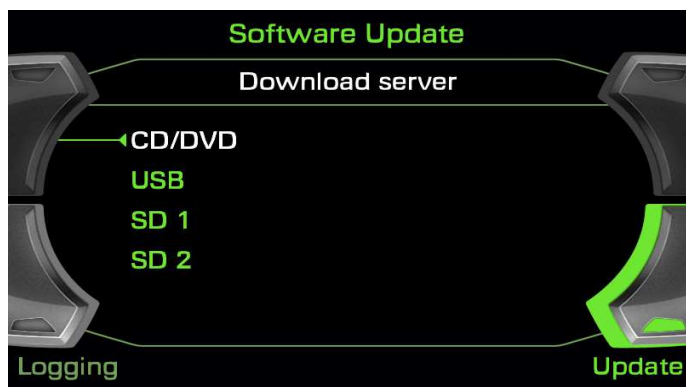


Note:

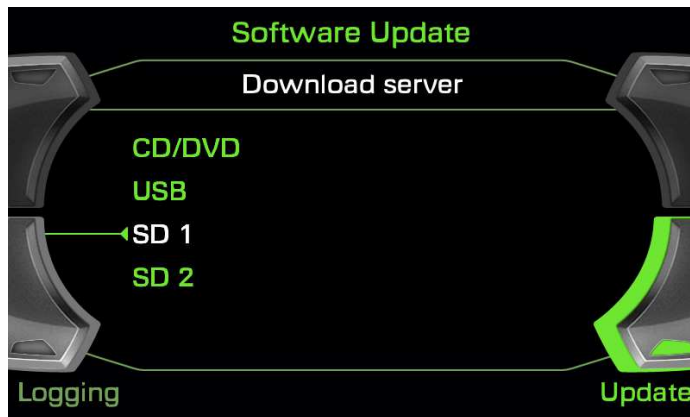
The software version shown below is an example. Values may differ depending on the vehicle market.



15. Click on "Update" section using the corresponding button.



16. Insert the SD card containing the software to be updated into one of the two SD slots. Then, you shall select the support (SD 1 or SD 2) where you have inserted the SD card.



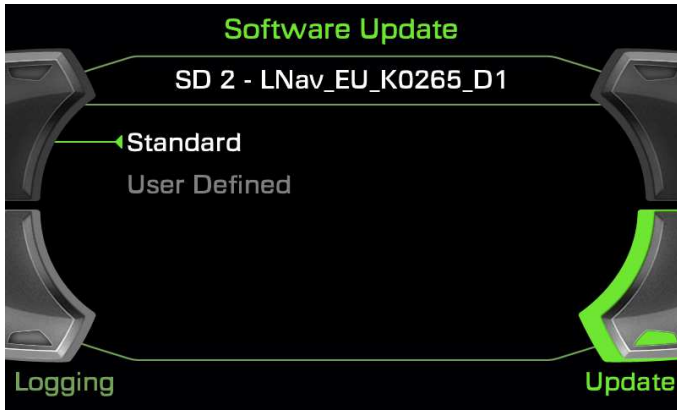
17. The name of the software to be installed is shown. Press the Main Knob selecting the software to update.



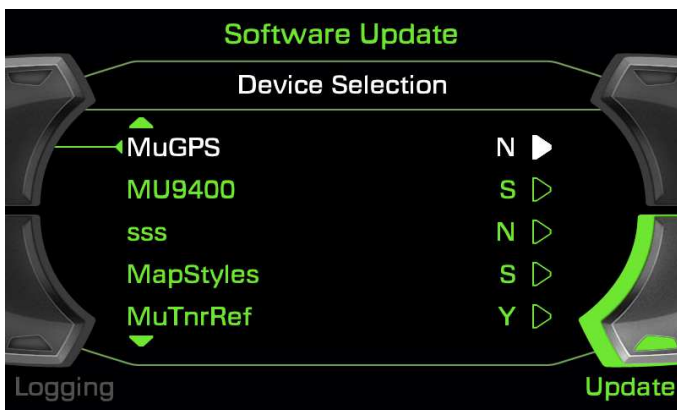
Note:

The software name shown "LNAV_EU_K0265_D1", is an example. Name may differ depending on the vehicle market.

18. Select "Standard" using the Main Knob.



19. At this point, you will see a list of components that may be updated.
 Those followed by letter S or letter Y will be updated.
 Those followed by letter N will not be updated.
 Those followed by N/A cannot be upgraded.



IMPORTANT:

Do not change the default settings of this list.

20. Scroll down rotating the main knob to "Start download" and press the center button.



21. Select "Start".



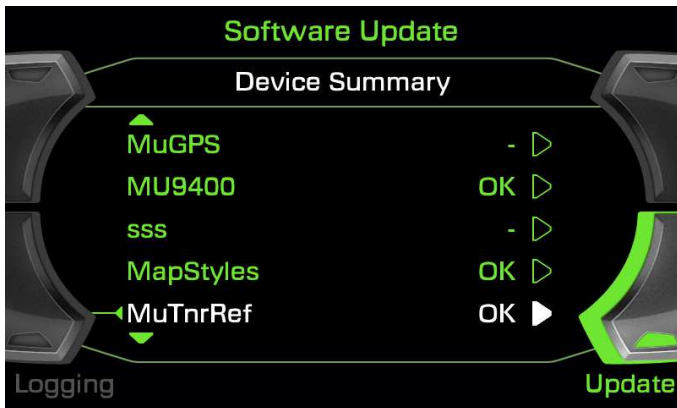
At this point, MMI restarts and then software update starts automatically.



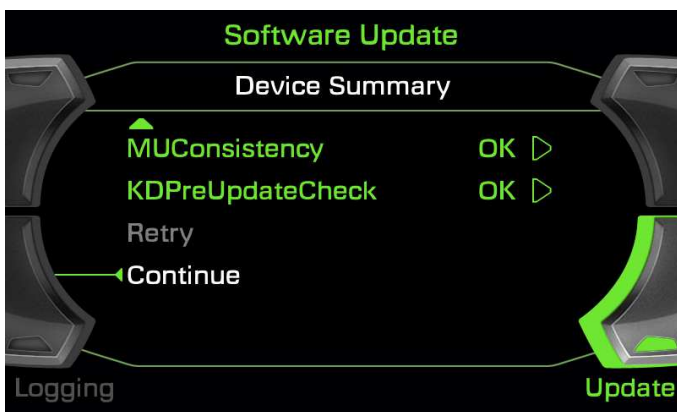
IMPORTANT:

MMI software update is an operation that takes several minutes. Make sure the car is connected to a battery charger and that the update is not interrupted.

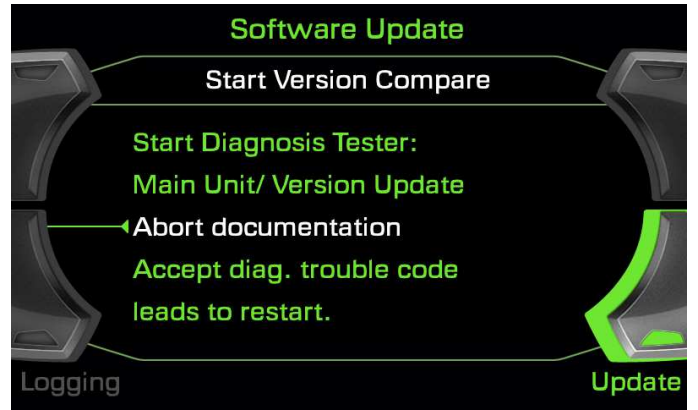
22. After MMI restarts, all updated items are followed by an "Ok".



23. Scroll down the Main Knob and select "Continue".



24. Select "Abort Documentation".



25. MMI automatically restarts.

26. By re-entering the Engineering Menu you can check that the software has been updated correctly.



L734-
A.07.17

To: Official After Sales Network
Subject: CarPlay Activation
Date: July 14, 2017
Pages: 20



27. Once MMI software update procedure has been completed, start ODIS service and complete the preliminary operations as described in chapter 10.00.ODIS preliminary operations.



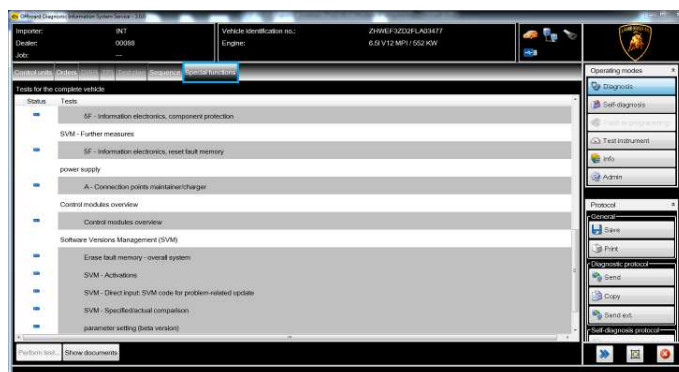
IMPORTANT:

Please correctly identify the vehicle selecting the right Variant (Coupè) and Engine Type (544 kW - Aventador S).

Leave the checkbox “Using guided fault finding” marked.

Kombi Update

28. Move on the ODIS tab “special functions”.



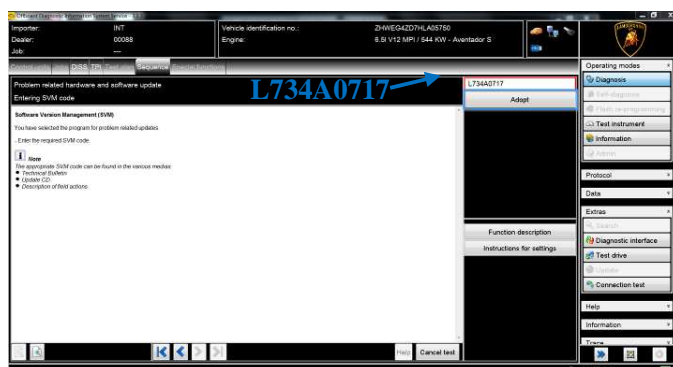
29. Select “SVM – Direct input: SVM code for problem related update” clicking the related row.

Click “Perform test...” to execute the SVM function.



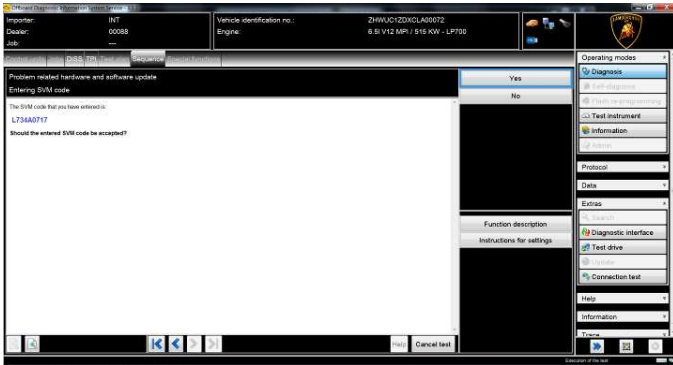
30. Insert in the upper box with the cursor the code:
L734A0717

Click “Adopt”.





31. Click “Yes” to confirm the code inserted is correct and follow the instructions.



This code updates the Kombi software and programs the MMI.

The complete guide in order to perform an SVM code is available in the workshop manual, chapter **10.00.Running an SVM code.**

Please note that Instrument Cluster software update is a quite delicate and long operation: be sure that ODIS service is the only application running on the diagnosis laptop.

After ECU update, **Coding** and **Calibration** operations could be needed.

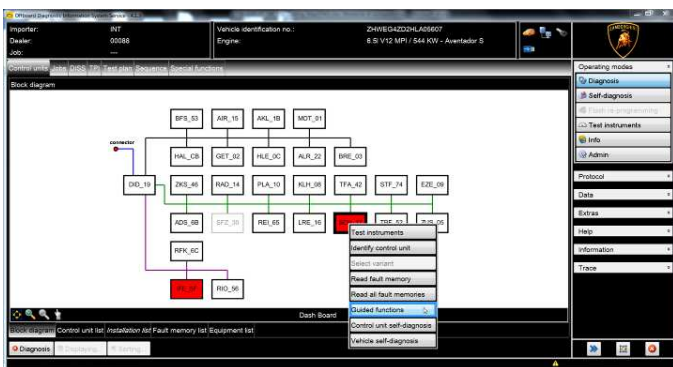


IMPORTANT

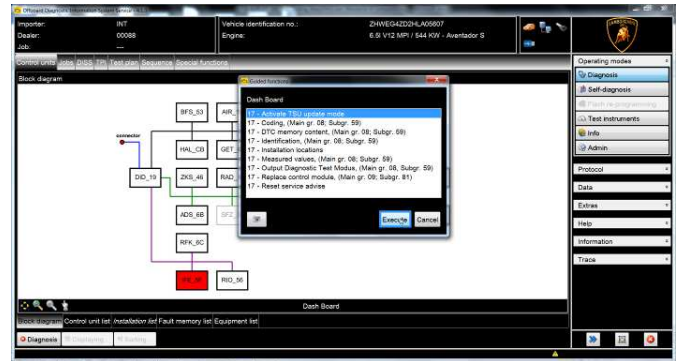
Always keep a battery charger connected during the SVM function.

TSU Update

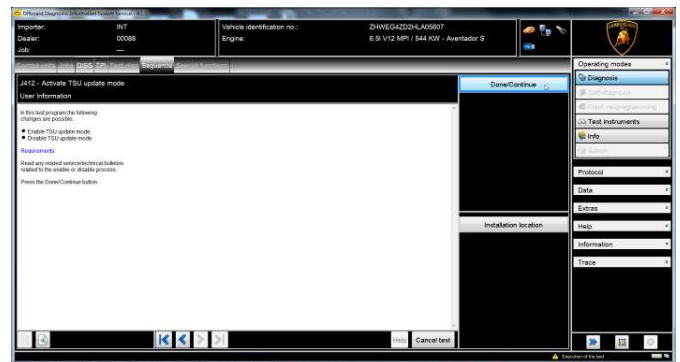
32. Right click on dashboard ECU (SCH_17) and select “Guided Functions”.



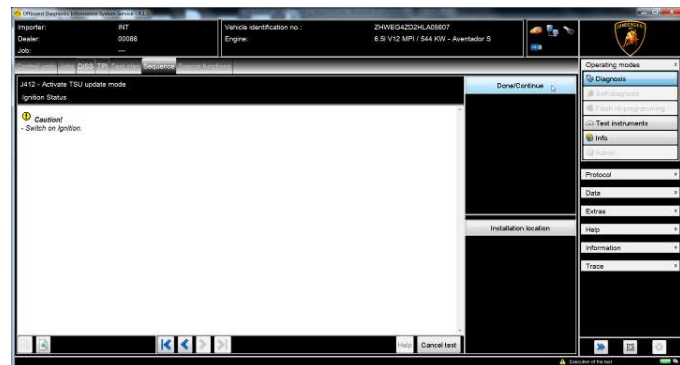
33. Select “17_Activate TSU Update Mode”.



34. Click “Done / Continue”.



35. Click “Done / Continue”.

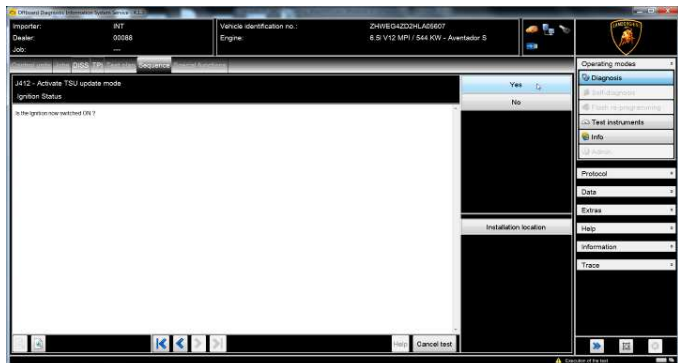


L734-
A.07.17

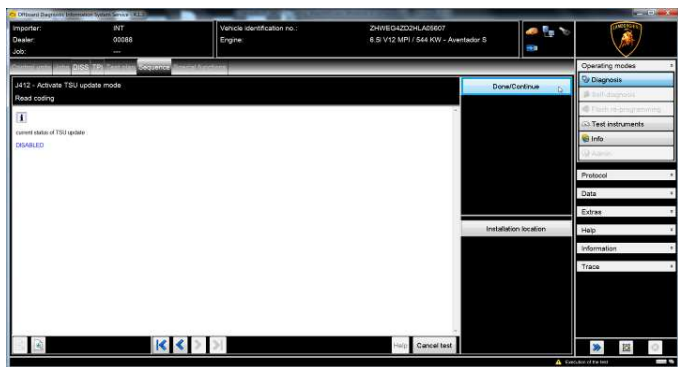
To: **Official After Sales Network**
Subject: **CarPlay Activation**
Date: **July 14, 2017**
Pages: **20**



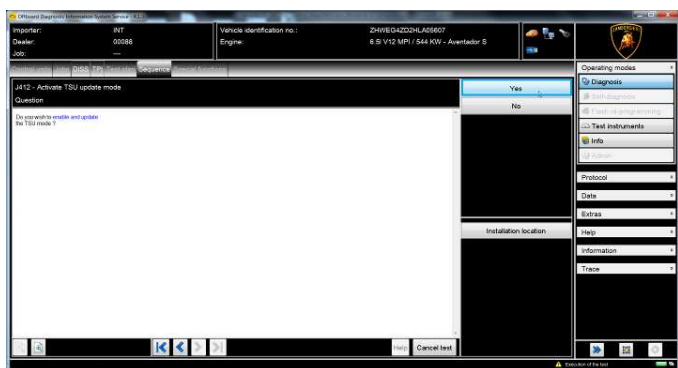
36. Click “Yes”.



37. Click “Done / Continue”.



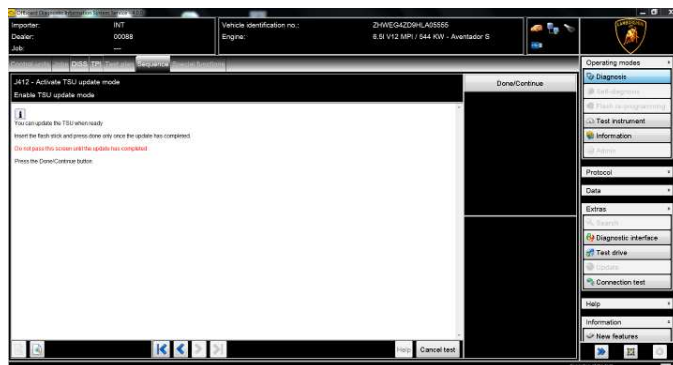
38. Click “Yes” in order to enable TSU Update Mode.



39. Click “Yes”.



40. When asked by ODIS Service, insert USB-stick in the USB port fitted in the central condol right side.



 **IMPORTANT:**

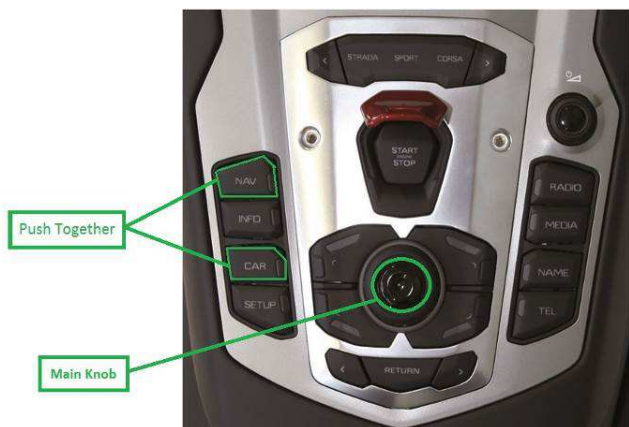
Keep the diagnostic Interface connected to the OBD socket and do not close ODIS Service program.

Once the software update has been executed it is necessary to complete the procedure in ODIS in order to disable the TSU update modes.

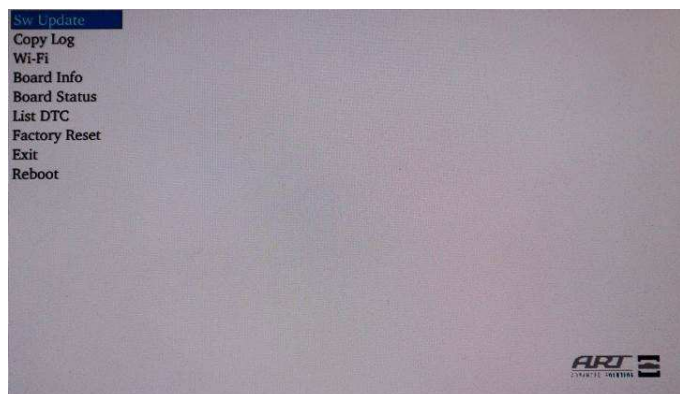


41. From this point continue the procedure for TSU software update using the buttons in the central tunnel.

Enter into “TSU Engineering Menu” pressing simultaneously CAR + NAV buttons.



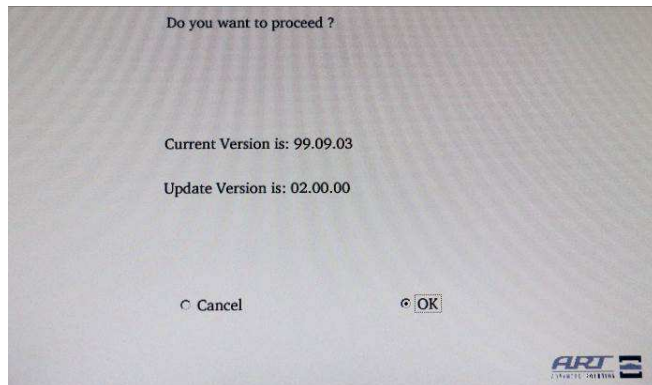
42. The following page is then displayed on the MMI screen. Select "Sw Update", using the main knob.



! IMPORTANT:

DO NOT select “Reboot” and “Factory Reset”.
 These two options might result in the system failure.

43. Using the Main Knob select “OK” in order to start the TSU software update.

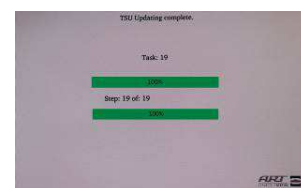
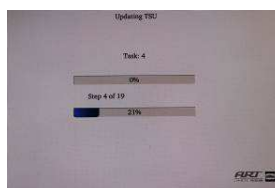


Note:

“**Current Version**” is the software already present on TSU control unit.

“**Update Version**” is the software that is going to be installed on TSU control unit.

44. Please wait. The procedure ends when the second bar reaches 100%.



When the procedure is over the TSU automatically re-starts in a few seconds.

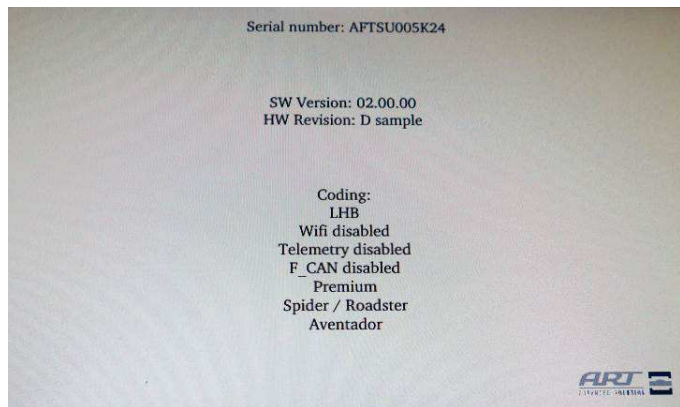
Then wait one minute and access again into “TSU Engineering Menu” pressing simultaneously CAR + NAV buttons.

L734-
A.07.17

To: **Official After Sales Network**
Subject: **CarPlay Activation**
Date: **July 14, 2017**
Pages: **20**



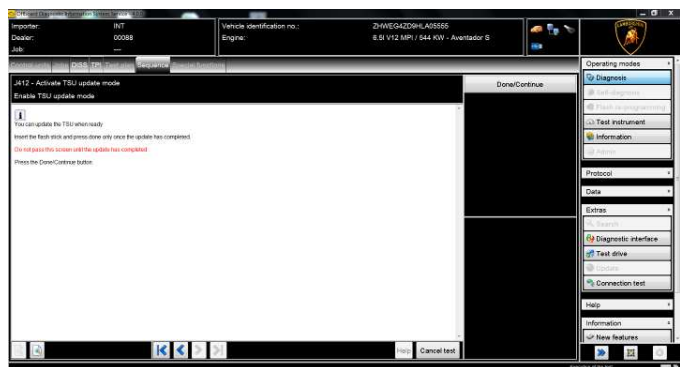
45. In the main page scroll down the list and select “Board Info” to verify if the software version previously update is the 02.00.00.



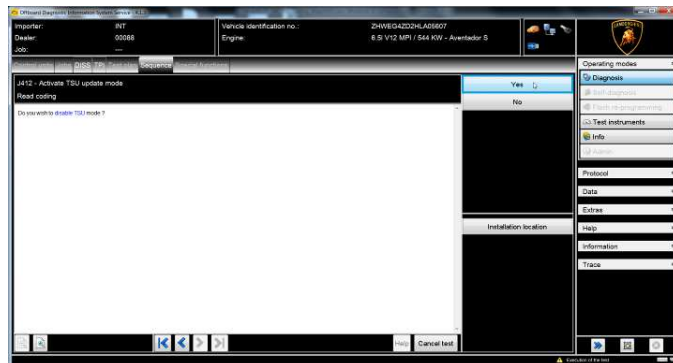
If the software version is 02.00.00 as shown in the picture quit the “TSU Engineering Menu” using RETURN button, otherwise execute again the software update procedure from step 0.

46. Once TSU has been updated correctly continue the procedure following ODIS instructions in order to disable TSU Update Mode.

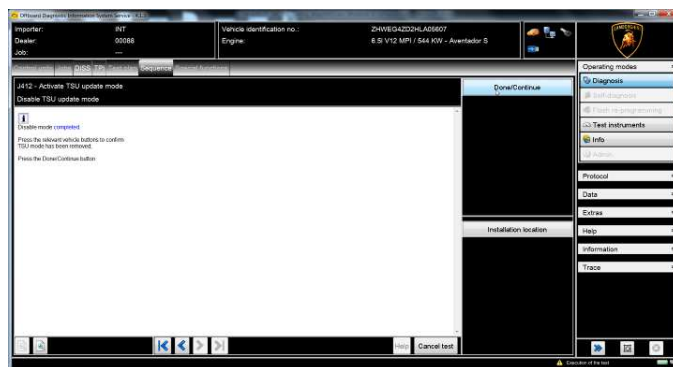
Click “Done Continue”.



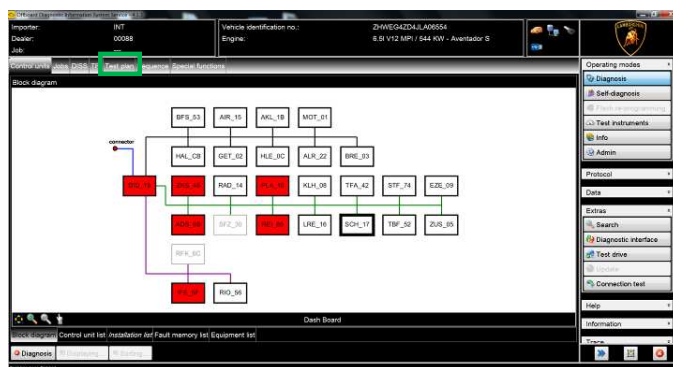
47. Click “Yes” in order to disable TSU Update Mode.



48. Click “Done/Continue”.



49. Once the TSU has been updated, select the tab “Test Plan”.



Rev.01

The information and procedures published below are strictly confidential and intended exclusively for authorized operators and individuals. All copyrights are the property of Automobili Lamborghini S.p.A based on copyright law. The company reserves the right to make updates and modifications. The reprinting, reproduction, forwarding to unauthorized people and/or to third parties and partial or entire translation thereof are prohibited without written authorization from Automobili Lamborghini S.p.A.

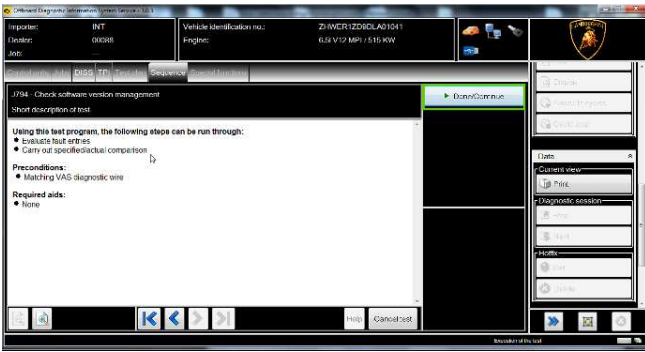
13/20

doc. nr: L/V6_M06 Rev.[02]

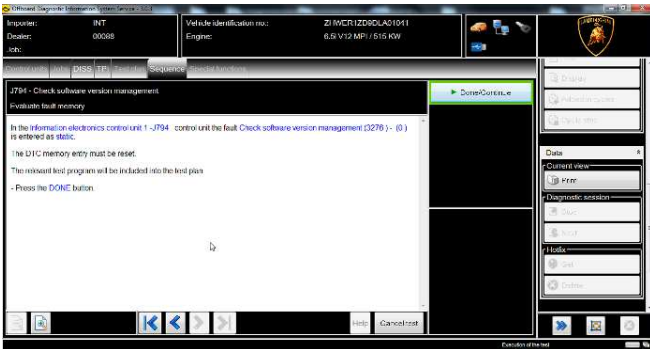
50. Select “J794 – Software version management, check” function and then click “Perform Test”.



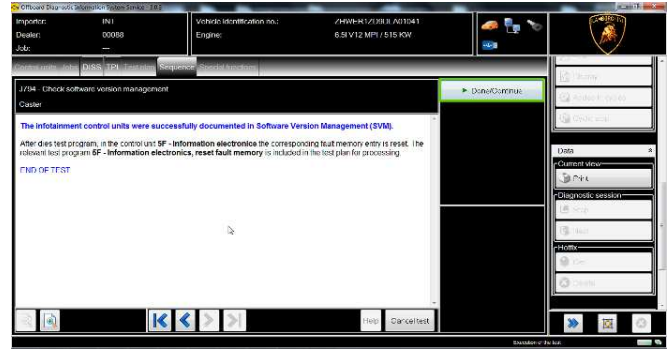
51. Click “Done/Continue”.



52. Click “Done/Continue”.

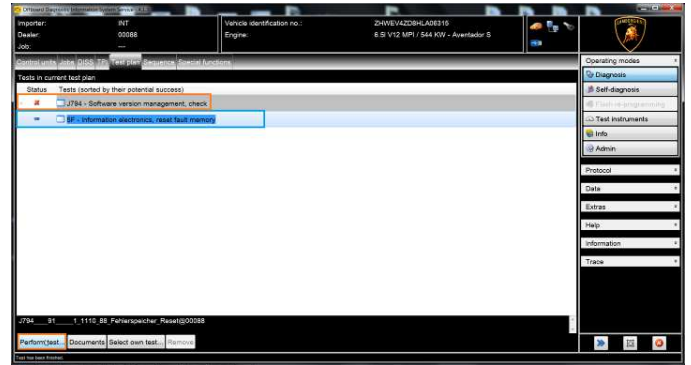


53. Click again “Done/Continue”.

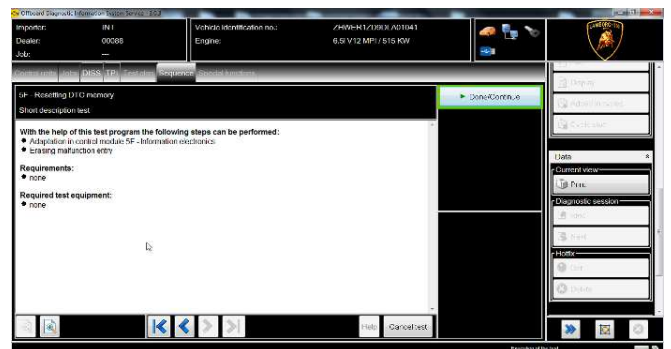


54. The process may not be successful. In this case next to the previous function appear the usual red cross and a new function is added to the “test plan”.

“5F - Information electronics, reset fault memory”. Select it and click on "Perform test".

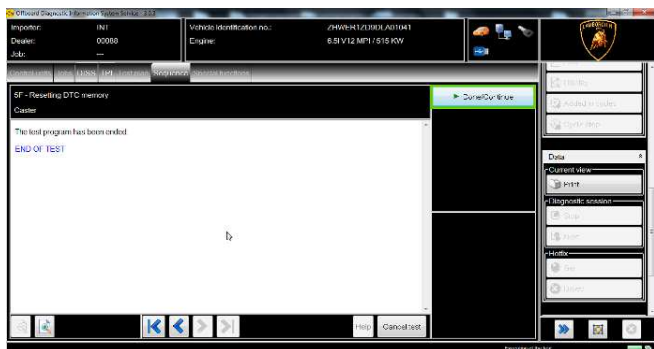


55. Click “Done/Continue” until the end of the procedure



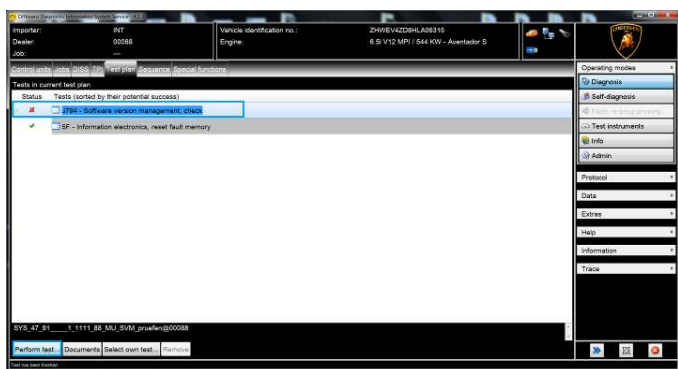
L734-
A.07.17

To: Official After Sales Network
Subject: CarPlay Activation
Date: July 14, 2017
Pages: 20

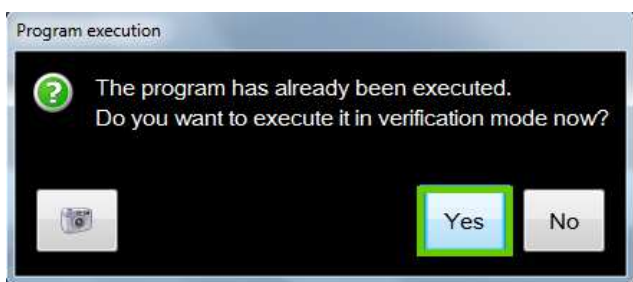


56. Go back in the Test Plan and select again:

"J794 - Software version management, check" and then click "Perform test".



57. Click "Yes".



58. Proceed clicking "Done / Continue" until the end of the operation.

This time the process will be successful:

- J794 - Software version management, check
- SF - Information electronics, reset fault memory

59. Go back to the "Special functions" tab and select "Erase fault memory – overall system" to clear all the stored faults.

The complete guide in order to erase all fault memories is available in the workshop manual, chapter **10.00.Deleting the data in the fault memory of control units.**



/* Adaptation After Software Updates */

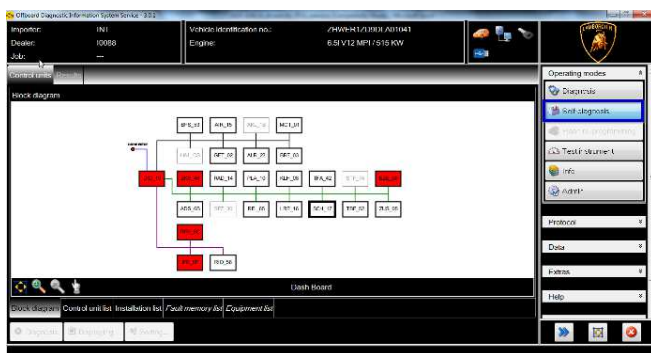


IMPORTANT:

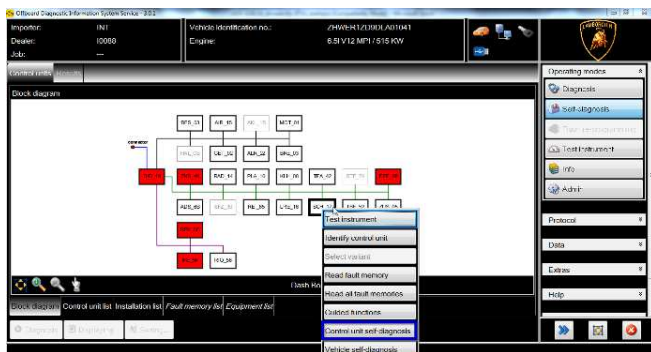
Adaptation is frequently necessary at the end of a control unit software update and following fault memories removal.

60. If it is necessary to restore service time and distance intervals:

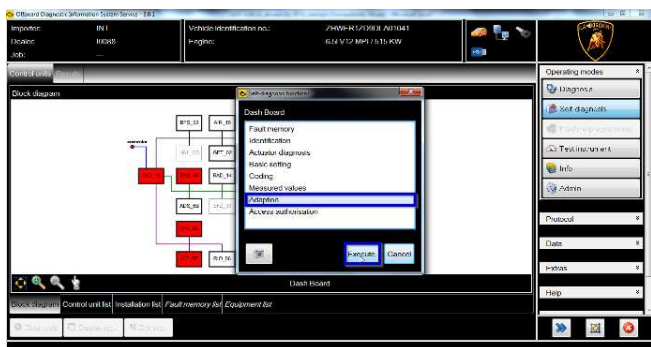
Select “self-diagnosis” in the right menu.



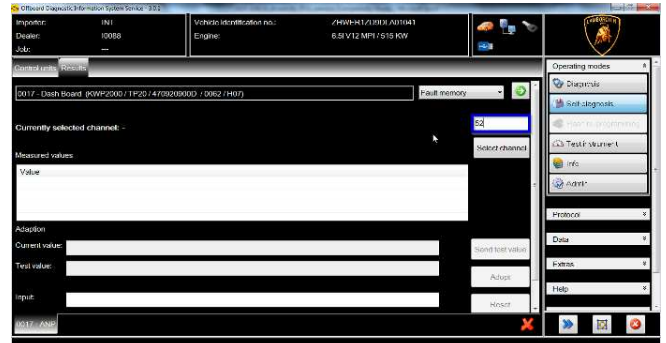
61. Right click dash board ECU and select Control Unit self-diagnosis.



62. In the following menu select Adaption and click “Execute”.



63. Write “52” in the channel box and click “Select channel” as shown in the picture.



64. Insert the distance to next service divided by 100 in the input box.

(e.g. write 150 for 15000 km to next service)

Click “adopt”.

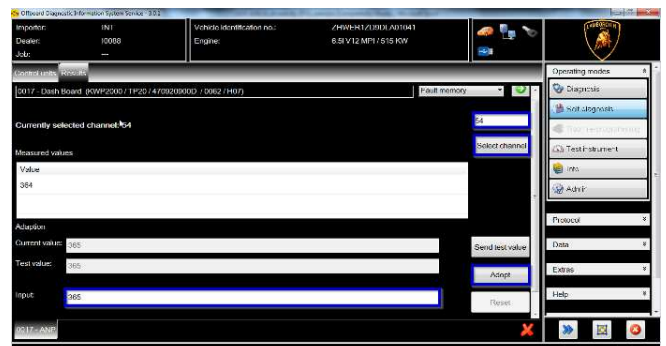


65. Write “54” in the channel box and click “Select channel”.

Then insert the days to next service in the input box.

(e.g. write 365 for 365 days to next service)

Click “adopt”.



/* Diagnosis protocol saving */

66. At the end of software updates, save the diagnostic protocol as described in chapter **10.00.ODIS Saving the diagnostic protocol**.



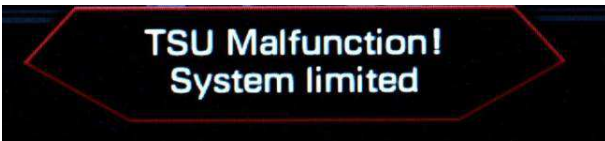
The diagnosis protocol has to be attached to the related Warranty Claim

(in order to insert the claim on the Web Portal, please refer to Warranty Claim Manual you can find under the Portal, Warranty section).

Road test

67. At the end of the software updates, please execute a road test of the car.

During the road test the pop-up “TSU warning” might appear for fifteen seconds.



This is due to the TSU system initialization.

The temporary absence of communication between TSU and Kombi might cause a sporadic DTC to be stored in the Kombi control unit.

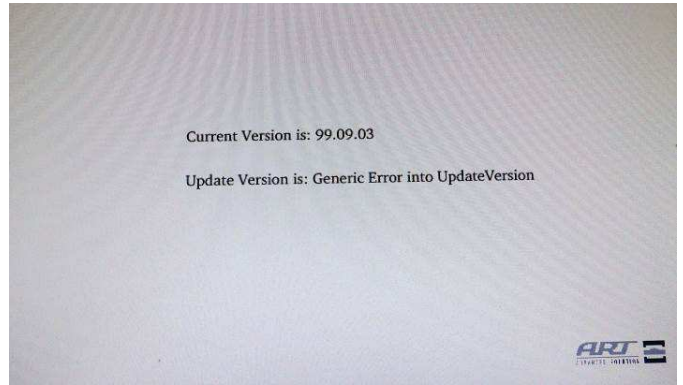
If the above pop-up appears, please start a new ODIS session and erase the fault memory of all ECUs:

go to the “Special functions” tab and select “Erase fault memory – overall system” to clear all the stored faults.

The complete guide in order to erase all fault memories is available in the workshop manual, chapter **10.00.Deleting the data in the fault memory of control units**.

Trouble shooting

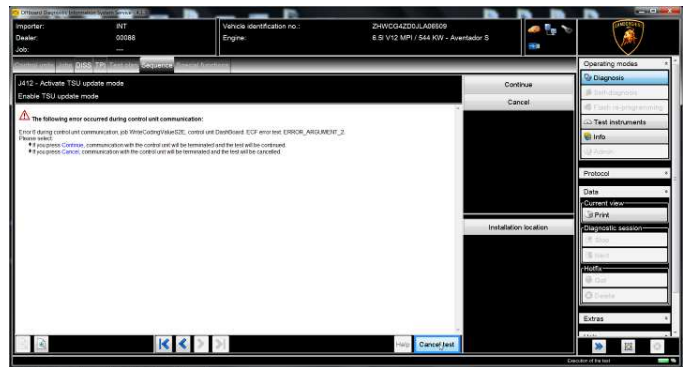
A. During TSU update procedure, if the following page is shown in MMI display:



Quit from “TSU Engineering Menu”, remove USB stick from USB port and then switch ignition off.

Then switch again ignition on, insert again USB stick into USB port and access again into “TSU Engineering Menu”.

B. If the following error page is shown, you shall abort the procedure clicking on “Cancel Test” and contact the Technical Support.



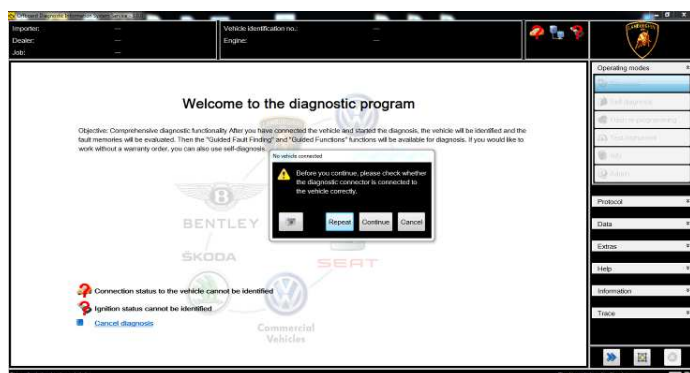
L734-
A.07.17

To: Official After Sales Network
Subject: CarPlay Activation
Date: July 14, 2017
Pages: 20



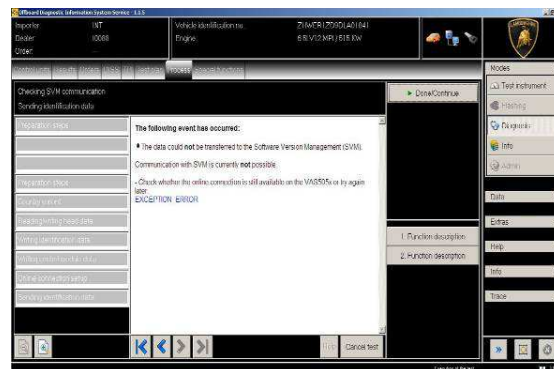
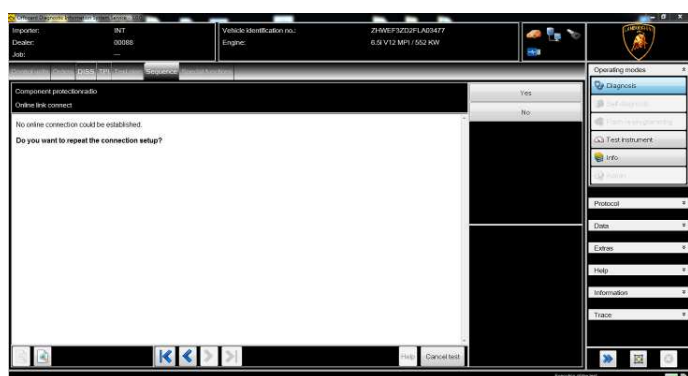
C. If the error message regarding the VAS5054 interface and the two icons for status of on board connection and key ON are shown as in the picture below:

- Click “Cancel”;
- Repeat the VAS5054 HW interface installation following the procedure (*) “VCI Manager v2.0”, by entering in the menu “Extras” on the right side and clicking on “Diagnostic interface”.



D. If one of the connection error screens is shown as in the pictures below:

- it is not possible to establish a connection with the central server. Please check carefully that the diagnosis laptop is properly connected to the internet network and retry clicking “Yes” or “Done/Continue”.



E. If the loss of connection happens during the target/actual comparison during SVM procedure:

- It is not possible to connect to central server, check the working connection of internet and retry by clicking “1”.

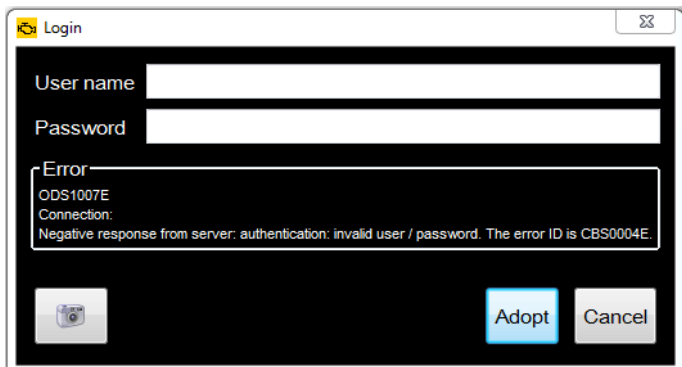


F. If the incorrect identification message is shown as in the picture below (error code: ODS1007E):

- be sure that your Geko account is valid;
- be sure that the label “Geko” is written on the token that you are using for the authentication;
- be sure the Password inserted is correct;
- click on Cancel and perform the application test (see document “ODIS_Checking_ConnectionServer_SVM_2.0” (*)).

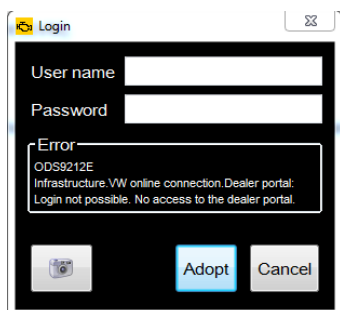
L734-
A.07.17

To: Official After Sales Network
Subject: CarPlay Activation
Date: July 14, 2017
Pages: 20



G. If the infrastructure error message is shown as in the picture below (error code: ODS9212E):

- be sure that your Geko account is valid
- be sure that the label “Geko” is written on the token that you are using for the authentication
- verify in ODIS settings you have “Internet” instead of “CPN” (see document “ODIS_Initial_Setup_2.0” (*))
- click on Cancel and perform the application test (see document “ODIS_Checking_ConnectionServer_SVM_2.0” (*))



H. If the same error is present during the application test, try the following procedure:

- quit ODIS;
- Enter the folder C:\Program Files (x86)\Offboard_Diagnostic_Information_System_Service\automatic_sessions on your diagnosis laptop;
- delete the only file present in that folder.
- re-Start ODIS Service under following conditions:

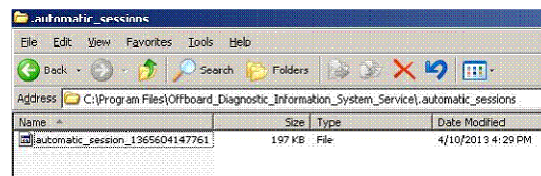
1. Network connection available;
2. ODIS connection set on “Internet”;

- Retry the application test and the SVM with your GeKO Token.



IMPORTANT REMARK:

In the case an error is still present, retry the procedure with a second GeKO token, if available.



I. In the case the flash container is not detected (see figure):

- Make sure to be recently synchronized with Mirrorserver by checking the last date of Sync under:

<http://mirrorserver/maintenance/diagnosis.py>

or under

[http://\[IP_address\]/maintenance/diagnosis.py](http://[IP_address]/maintenance/diagnosis.py)

- if you don't have previously defined the “mirrorserver” IP address alias.
- Make sure to be correctly connected with Mirrorserver.

Rev.01

The information and procedures published below are strictly confidential and intended exclusively for authorized operators and individuals. All copyrights are the property of Automobili Lamborghini S.p.A based on copyright law. The company reserves the right to make updates and modifications. The reprinting, reproduction, forwarding to unauthorized people and/or to third parties and partial or entire translation thereof are prohibited without written authorization from Automobili Lamborghini S.p.A.

19/20

doc. nr: L/V6_M06 Rev.[02]



MS/2 Diagnosis

Configuration	
Base path	/var/www/desert
Provider URL	https://altair.mirrorserver2.net/deployment
Repository URL	https://altair.mirrorserver2.net/storage
Feedback URL	https://altair.mirrorserver2.net/health
Proxy	10.48.187.43
Key file	/var/www/desert/certs/userkey.pem
Certificate	/var/www/desert/certs/usercert.pem
Tests	
Local file/directory permissions	OK
Disk space	OK
Provider reachable	OK (altair.mirrorserver2.net)
Repository reachable	OK (altair.mirrorserver2.net)
Feedback reachable	OK (altair.mirrorserver2.net)
Provider WebDAV access	OK (https://altair.mirrorserver2.net/deployment)
Repository WebDAV access	OK (https://altair.mirrorserver2.net/storage)
Feedback WebDAV access	OK (https://altair.mirrorserver2.net/health)
Successful package downloads	9
Failed package downloads	0
Last Sync	15/12/17 22:09:13
<input type="button" value="Start tests"/>	



NOTE. (*)

ODIS technical documentation can be retrieved on the Lamborghini web portal, under ODIS section.



IMPORTANT REMARK:

The documents to be mandatory attached to the claim are:

- Job order done;
- Diagnosis Protocol saved.

Failure to follow the procedures may lead to the rejection of the request.

Your Area Manager is at full disposal for further information.

Best regards

Customer Service