



# Service Bulletin

## PRELIMINARY INFORMATION

**Subject:** Diagnostic Tips for DTC P0741: Torque Converter Clutch Stuck Off

**Models:** 2015-2016 Chevrolet Colorado

2015-2016 GMC Canyon

Equipped with 6L50 Automatic Transmission (RPO MYB)

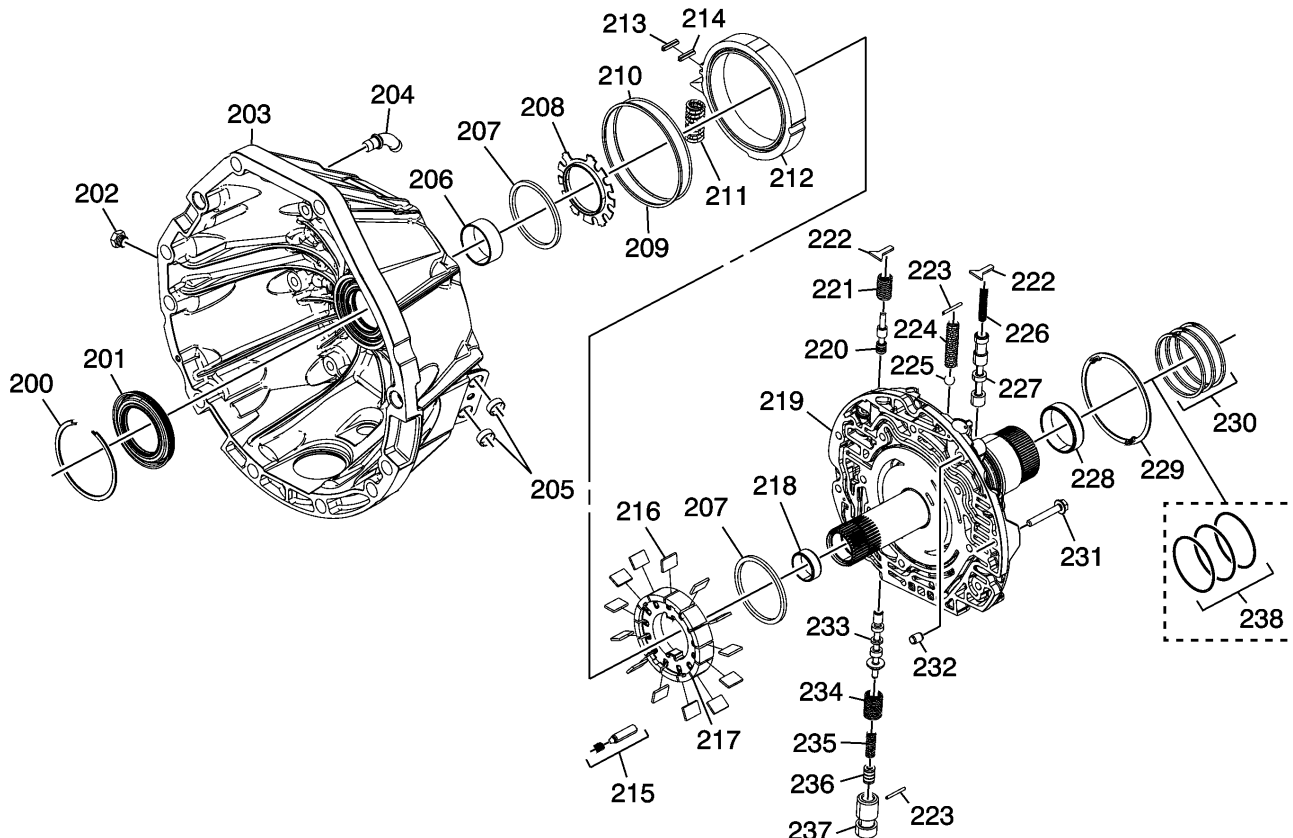
*This PI has been revised to update the Model Years. Please discard PI1447.*

### Condition/Concern

Some customers may comment on an illuminated MIL. Technicians may find DTC P0741 set as an active or history code.

### Recommendation/Instructions

This condition may be caused by a damaged turbine shaft front bushing (218). The turbine shaft may also be damaged in the journal area that is in contact with this bushing.



Disassemble the pump to inspect the turbine shaft front bushing (218). If the bushing is damaged, replace the pump cover and the 4-5-6 (w/Turbine Shaft) Housing Assembly (441).

---

GM bulletins are intended for use by professional technicians, NOT a "do-it-yourselfer". They are written to inform these technicians of conditions that may occur on some vehicles, or to provide information that could assist in the proper service of a vehicle. Properly trained technicians have the equipment, tools, safety instructions, and know-how to do a job properly and safely. If a condition is described, DO NOT assume that the bulletin applies to your vehicle, or that your vehicle will have that condition. See your GM dealer for information on whether your vehicle may benefit from the information.



WE SUPPORT VOLUNTARY TECHNICIAN CERTIFICATION