



Service Bulletin

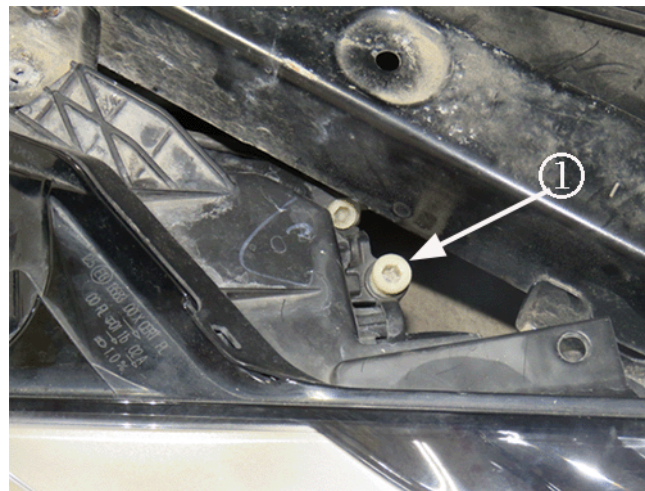
TECHNICAL

Subject: Modified Headlamp Aim Procedure for Horizontal Aim Adjuster Difficult or Inoperative

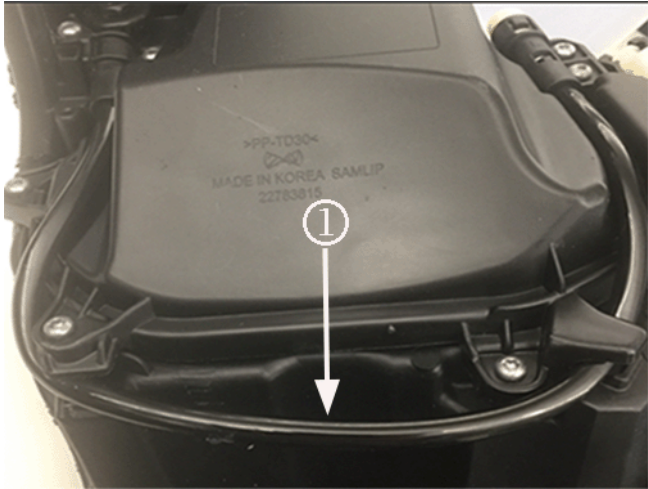
Attention: This Bulletin Applies to Export Vehicles Only.

Brand:	Model:	Model Year:		VIN:		Engine:	Transmission:
		from	to	from	to		
Cadillac	ATS	2013	2017			All	All

Condition



Some technicians or customers may comment that it is difficult to adjust a headlamp(s) horizontal aim. The horizontal adjuster location (1) is shown in the graphic above.

<p>Cause</p>	 <p>The cause of the condition may be that the aim adjuster cable (1) may have become corroded due to water intrusion.</p>
<p>Correction</p>	<p>Horizontal aim can be accomplished following the modified Service Procedure below.</p>

Parts Information

No parts are required for this repair.

Warranty Information

For vehicles repaired under the Bumper-to-Bumper coverage (Canada Base Warranty coverage), use the following labor operation. Reference the Applicable Warranties section of Investigate Vehicle History (IVH) for coverage information.

Labor Operation	Description	Labor Time
2080828*	Modified Headlamp Aim Procedure	0.4 hr
*This is a unique Labor Operation for Bulletin use only.		

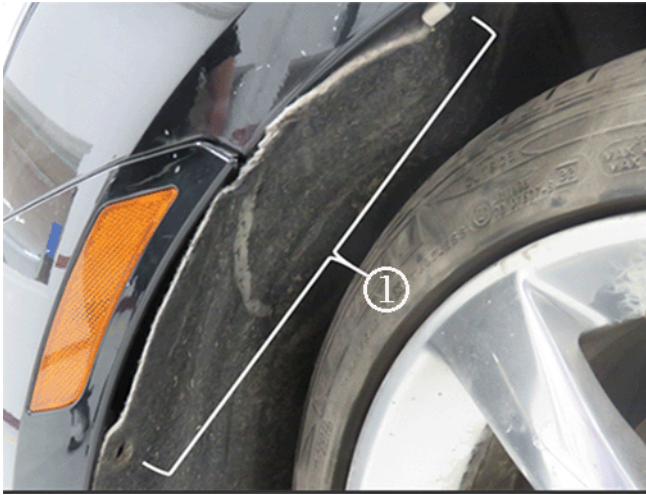
Service Procedure

1. Position the vehicle on a level surface in preparation for headlamp aiming. Refer to the appropriate *Headlamp Aiming* procedure in SI.

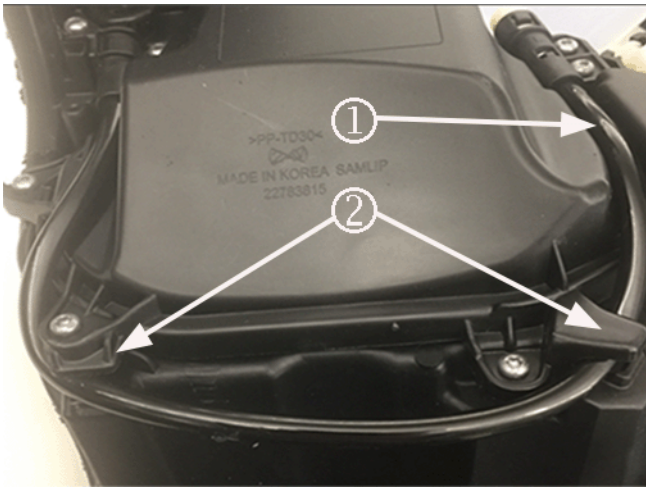


Note: The front fascia is shown removed in several of the graphics for illustration purposes only. It is NOT necessary to remove the fascia to complete this aiming procedure.

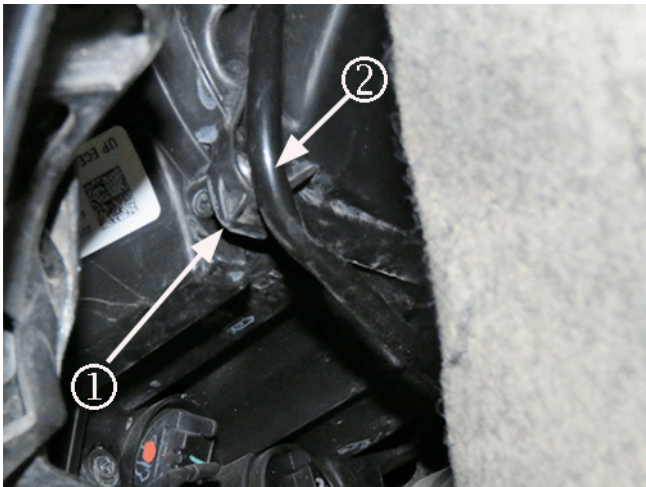
2. Turn the steering wheel to position front of tire as far outboard as possible on the affected side.



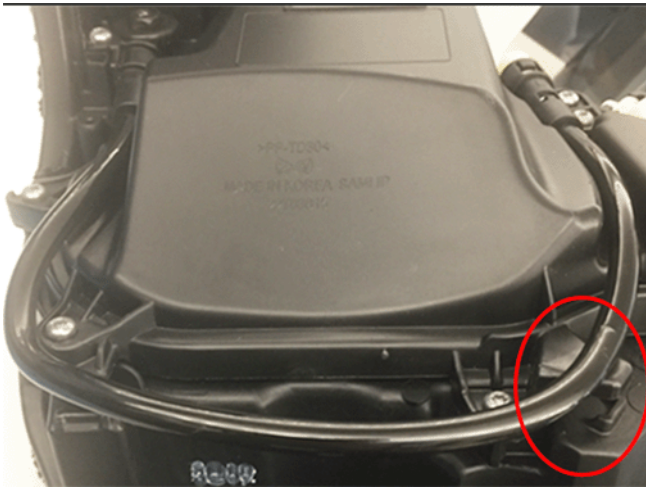
3. Remove the three forward wheelhouse liner fasteners (1) and pull liner away to access the backside of the headlamp. You should be able to tuck the liner behind the tire to temporarily hold it out of position.



4. Detach the headlamp adjuster cable (1) so it is no longer trapped by the two retaining clips (2).



- 4.1. Starting with the outboard clip (1), pinch adjuster cable (2) together and pull rearwards.



4.2. Then pull cable cross-car to unclip the inboard position.



Note: Loosely holding the adjuster cable during headlamp aim prevents the cable from twisting, and allows the inner cable to break free from any rust/corrosion.

5. While loosely holding the adjuster cable, place driver tool in horizontal adjuster and turn to adjust headlamp beam pattern left or right as desired.



6. Once aim is achieved, reposition the adjuster cable behind the two retaining clips on the headlamp.

7. Reposition the wheelhouse liner and reinstall the three retainers.

8. Complete any further headlamp aiming as necessary.

Version	1
---------	---

Modified	
-----------------	--

GM bulletins are intended for use by professional technicians, NOT a "do-it-yourselfer". They are written to inform these technicians of conditions that may occur on some vehicles, or to provide information that could assist in the proper service of a vehicle. Properly trained technicians have the equipment, tools, safety instructions, and know-how to do a job properly and safely. If a condition is described, DO NOT assume that the bulletin applies to your vehicle, or that your vehicle will have that condition. See your GM dealer for information on whether your vehicle may benefit from the information.



WE SUPPORT VOLUNTARY TECHNICIAN CERTIFICATION