



# Service Bulletin

## TECHNICAL

**Subject:** Service Theft Deterrent System Message on DIC, No Start, DTC B2955

Brand:	Model:	Model Year:		VIN:		Engine:	Transmission:
		from	to	from	to		
Chevrolet	Trax	2017	2017			All	All

<b>Involved Region or Country</b>	North America
<b>Additional Options (RPOs)</b>	Equipped with KEY-PRIMARY FOLDABLE (RPO KTF)
<b>Condition</b>	Some customers may comment on a Service Theft Deterrent message displayed on the Driver Information Center (DIC) and/or the vehicle will not start. During diagnosis a technician may find DTC B2955 set or stored in history.
<b>Cause</b>	This may be due to the immobilizer control module connector located in the front of the instrument panel compartment becoming disconnected when the steering wheel is adjusted forward.
<b>Correction</b>	Replace the connector for the immobilizer module by following the Service Procedure below.

### Parts Information

Description	Part Number	Qty
CONNECTOR, MDL-THEFT DTRNT *PURPLE	13576530	1

### Warranty Information

For vehicles repaired under warranty, use:

Labor Operation	Description	Labor Time
6480408*	Inspect IP Harness Tag for Julian Date	0.2 hr
Add*	Replace Immobilizer Control Module Connector	0.7 hr

\*This is a unique Labor Operation for Bulletin use only.

### Service Procedure

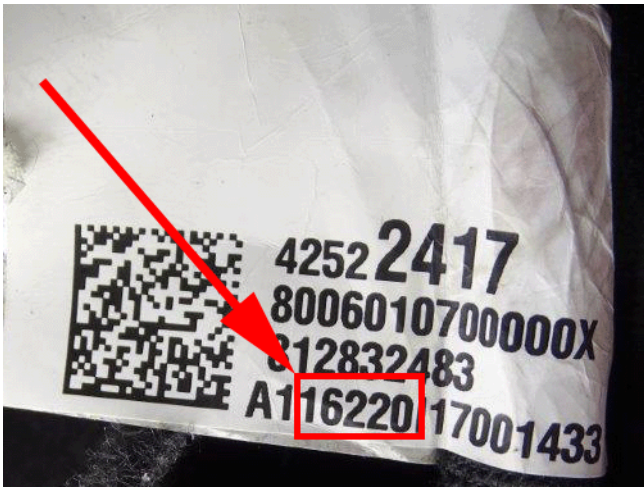
If you encounter a vehicle with the above concern, complete the following steps:

1. Remove the passenger floor auxiliary mat lower retainer. Refer to *Floor Auxiliary Mat Lower Retainer Replacement (Chevrolet)* in SI.



2. Visually inspect the julian date on the IP harness.

**Note:** The julian date goes as follows: XXAABBB (AA = Year (Example shown shows 2016) BBB = Day (Example shown shows August 9th 2016))



- If the julian date is prior to November 11, 2016, continue onto Step 3.
  - If the julian date is after November 11, 2016, continue diagnosis referring to SI.
3. Remove the lower steering column trim cover. Refer to *Steering Column Lower Trim Cover Replacement* in SI.



4. Visually inspect the Immobilizer Control Module Connector to see if it has become disconnected.
5. If the connector has become disconnected, replace the connector. Refer to the repair instructions in *Wiring Systems and Power Management* section of SI.

**Important:** Do NOT use a service pigtail kit. Use the service connector part number called out in the Parts Information section of this bulletin.

<b>Version</b>	1
<b>Modified</b>	

GM bulletins are intended for use by professional technicians, NOT a "do-it-yourselfer". They are written to inform these technicians of conditions that may occur on some vehicles, or to provide information that could assist in the proper service of a vehicle. Properly trained technicians have the equipment, tools, safety instructions, and know-how to do a job properly and safely. If a condition is described, DO NOT assume that the bulletin applies to your vehicle, or that your vehicle will have that condition. See your GM dealer for information on whether your vehicle may benefit from the information.



WE SUPPORT VOLUNTARY TECHNICIAN CERTIFICATION