



Preliminary Information

PIT5457B Service ABS / TCS / Power Steering and/or Suspension Message DTC U0077 U0121 U0126 U0131 U0139 U0151 U0401 U0415 U0428 (Circuit 5986 High Resistance)

Product Investigation Review Required

Models

Brand:	Model:	Model Years:	VIN:		Engine:	Transmissions:
			from	to		
Cadillac	Escalade	2015 - 2017	All	All	All	All
Chevrolet	Silverado 1500	2014	All	All	All	All
Chevrolet	Silverado	2015 - 2017	All	All	All	All
Chevrolet	Suburban	2015 - 2017	All	All	All	All
Chevrolet	Tahoe	2015 - 2017	All	All	All	All
GMC	Sierra 1500	2014	All	All	All	All
GMC	Sierra	2015 - 2017	All	All	All	All
GMC	Yukon	2015 - 2017	All	All	All	All

Supersession Statement

This PI was superseded to add 2017 Models and update the Condition and Recommendation. Please discard PIT5457A. The following diagnosis might be helpful if the vehicle exhibits the symptom(s) described in this PI.

Condition / Concern

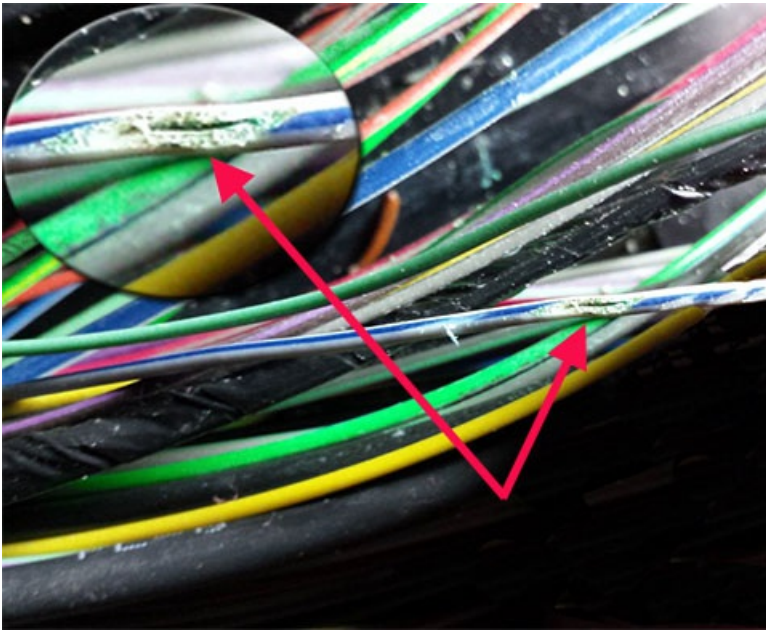
Some owners may comment on any of the following issues:

- Service ABS and/or Traction control lights/message on.
- Service Power Steering System, if equipped with electric power steering.
- Service Suspension System, if equipped with RPO Z95.
- Backup reverse camera inoperative
- Loss of communication with EBCM, SDM, SWPS, PSCM, PTO, HMI, and/or SCM (if equipped).
- DTC's: B127B, U0077, U0117, U0121, U0126, U0131, U0139, U0151, U0401, U0415, U0428, U18A3, and/or U2179

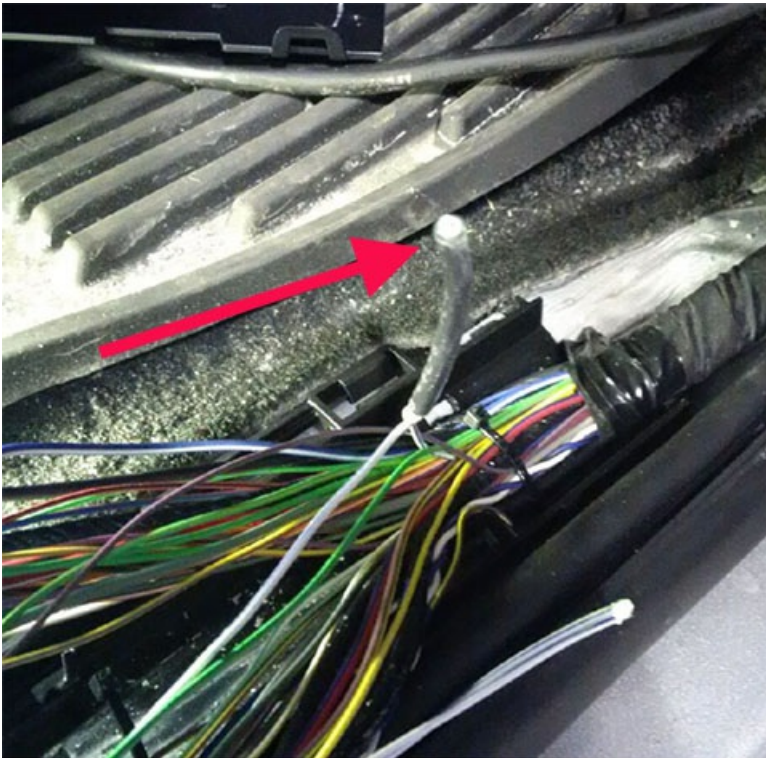
These concerns could be caused by high resistance/open in the Communication Enable circuit 5986. The BCM activates this circuit when the ignition key is in ACC, ON, and START positions (There will be voltage present in the OFF position only for a short time until the BCM goes to sleep). The communication enable circuit wakes up the module for serial data bus communication. Circuit 5986 will have approximately 12 volts and should light a test light, but is not designed to handle heavier electrical loads like a headlight bulb. Below are three known areas where circuit 5986 has been found to be open/shorted/high resistance:

1. On short wheel base utilities (Escalade, Tahoe and Yukon), the chassis harness cut/pinched/shorted between the body and spare tire crossmember, see latest version of PIT5556 for more details.
2. Under the driver's sill plate, shown below.





3. Splice J365 located under the passenger front sill plate, shown below.



Recommendations / Instructions

Monitor the voltage on the communication enable circuit 5986 at any of the modules affected, example EBCM, PSCM, SWPS, SDM, HMI, PTO, and/or SCM. If low voltage or no voltage is present when the concern occurs, inspect for open/high resistance/shorts on circuit 5986. Repair any opens/high resistance/shorts in the circuit.

Warranty Information

Please refer to latest version of bulletin [10-00-89-005](#) for warranty information on wire/connector repairs. Please follow this diagnostic or repair process thoroughly and complete each step. If the condition exhibited is resolved without completing every step, the remaining steps do not need to be performed.