



# Preliminary Information

## PIT5287C Diagnostic Tip - Front Shock Terminal Removal

### Models

Brand:	Model:	Model Years:	VIN:		Engine:	Transmissions:
			from	to		
Cadillac	Escalade 2WD	2015 - 2017	All	All	All	All
Cadillac	Escalade 4WD	2015 - 2017	All	All	All	All
Cadillac	Escalade ESV 2WD	2015 - 2017	All	All	All	All
Cadillac	Escalade ESV 4WD	2015 - 2017	All	All	All	All
Chevrolet	Suburban 2WD	2015 - 2017	All	All	All	All
Chevrolet	Suburban 4WD	2015 - 2017	All	All	All	All
Chevrolet	Silverado 2WD	2015 - 2017	All	All	All	All
Chevrolet	Silverado 4WD	2015 - 2017	All	All	All	All
Chevrolet	Tahoe 2WD	2015 - 2017	All	All	All	All
Chevrolet	Tahoe 4WD	2015 - 2017	All	All	All	All
GMC	Sierra 2WD	2015 - 2017	All	All	All	All
GMC	Sierra 4WD	2015 - 2017	All	All	All	All
GMC	Yukon 2WD	2015 - 2017	All	All	All	All
GMC	Yukon 4WD	2015 - 2017	All	All	All	All

With Magnetic Ride Suspension Package (RPO Z95)

### Supersession Statement

This PI was superseded to update Model Years. Please discard PIT5287B.

The following diagnosis might be helpful if the vehicle exhibits the symptom(s) described in this PI.

### Condition / Concern

Certain repairs to the front suspension require the removal of the front shock electrical connector terminals. Because the terminals are positioned deep into the connector body, it may be difficult to remove the terminals.

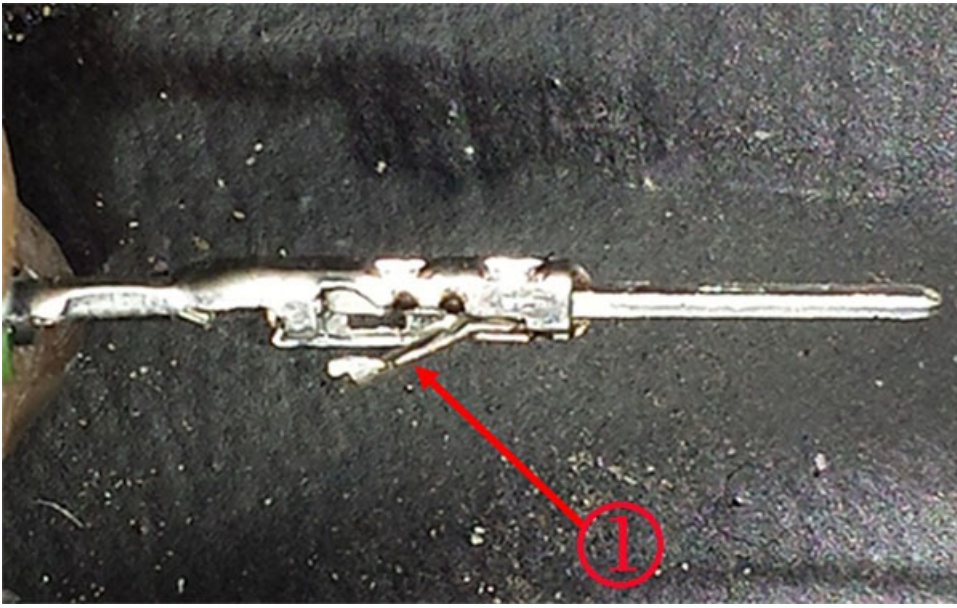
### Recommendations / Instructions

The use of terminal release tool J-38125-12A (Delphi # 12094429), with a small modification, has been found to make removal of the terminal(s) much easier.

Slightly bend the end of the J-38125-12A release tool, as shown in the photo below.



While looking down into the connector body at the terminals, there is a purple TPA that will align itself in the release position when the release tool is inserted into the release hole. Shown below is a shock terminal, that is already removed from the connector body, to show the metal locking tab (1) that will need to be pushed in with the terminal release tool before the terminal will pull out of the connector body.



Please follow this diagnostic or repair process thoroughly and complete each step. If the condition exhibited is resolved without completing every step, the remaining steps do not need to be performed.



© 2016 General Motors. All Rights Reserved.