



Service Bulletin

PRELIMINARY INFORMATION

Subject: Diagnostic Tip - MIL On With DTC P0442 Stored Current Or History

Brand:	Model:	Model Year:		VIN:		Engine:	Transmission:
		from	to	from	to		
Chevrolet	VOLT	2016	2017	All		1.5L (RPO L3A)	N/A

Involved Region or Country	North America
Additional RPO/s:	1.5L (RPO L3A)
Condition	Vehicles Built Prior To October 3, 2016 Some customers may comment that the Malfunction Indicator Lamp (MIL) is on. DTC P0442 may be stored current or in history.

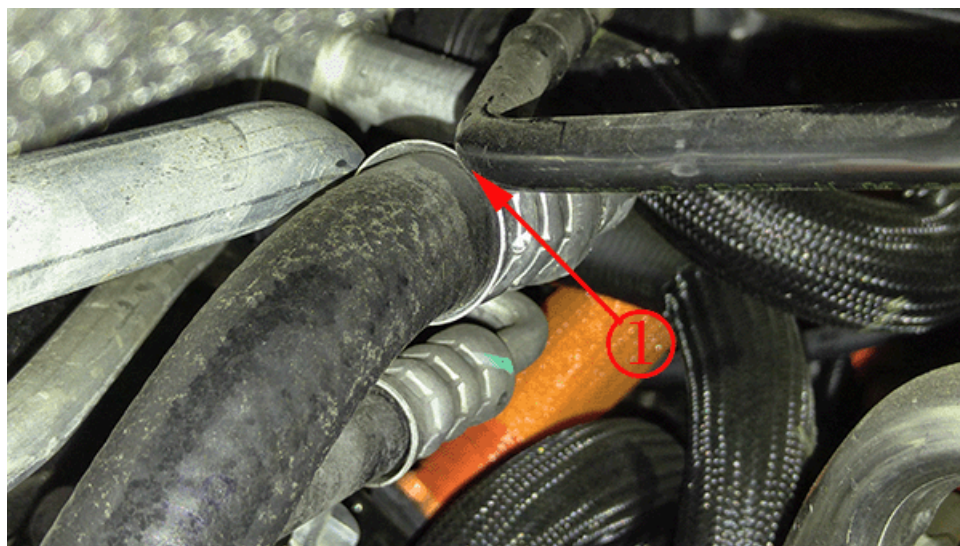
Correction

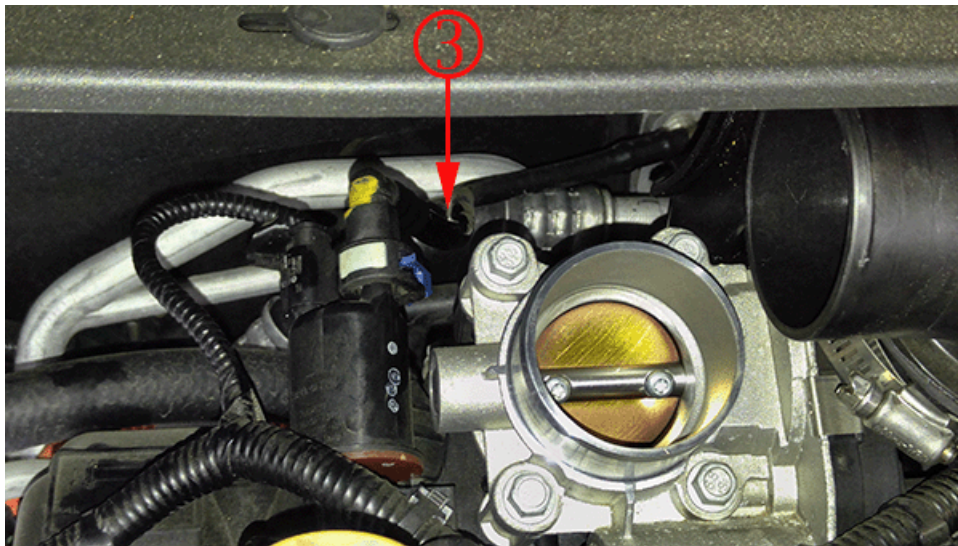
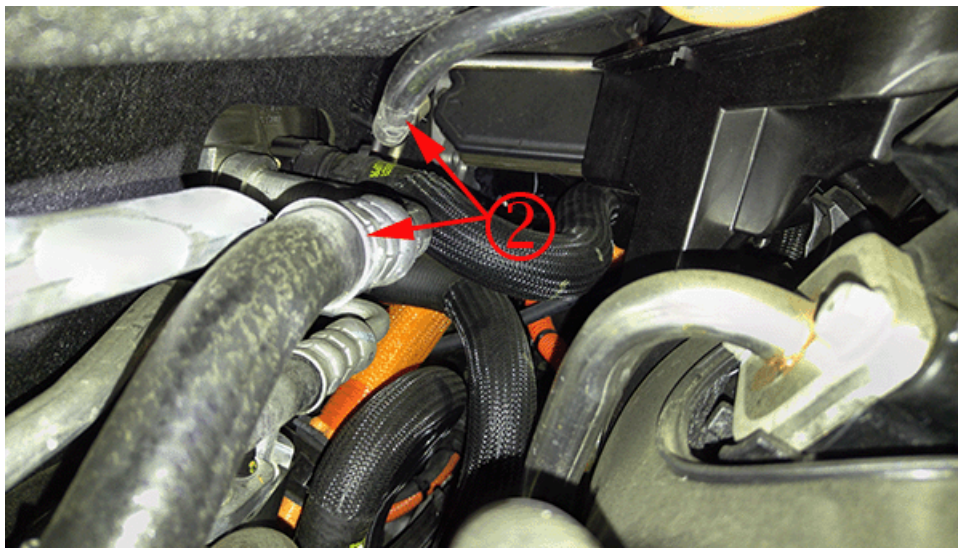
If this concern is experienced, advise the technician to inspect the evaporative emissions purge solenoid pipe for contact damage at the AC evaporator core hose as shown below.

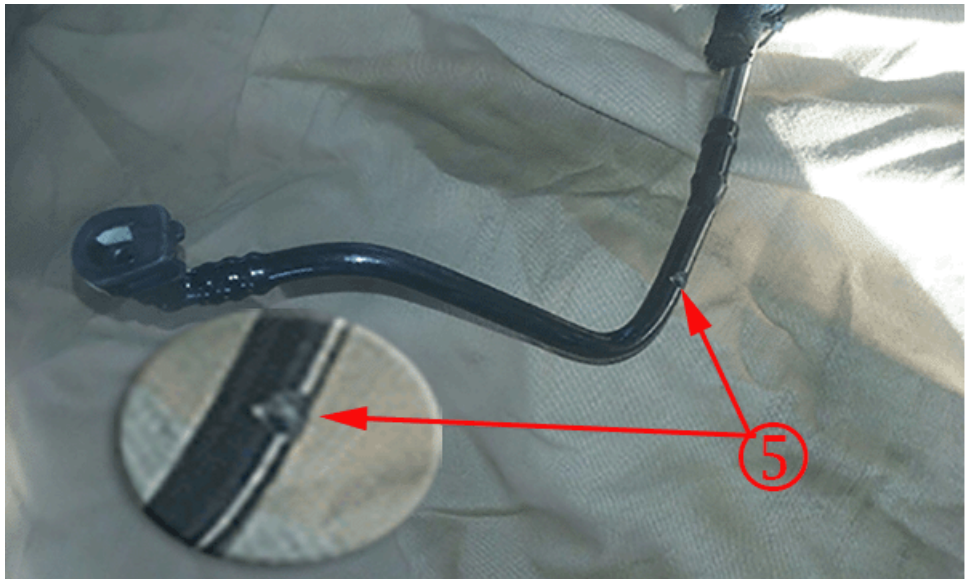
Numbers 1-4 below, show the area of contact. Number 5 shows the damage caused by the contact.

If the damage shown below is found, replace the evaporative emissions purge pipe.

If no damage is found, perform Strategy Based Diagnosis on the concern.







Warranty Information

For vehicles repaired under warranty, use the appropriate labor operation for the repair performed.

Version	1
Modified	

GM bulletins are intended for use by professional technicians, NOT a "do-it-yourselfer". They are written to inform these technicians of conditions that may occur on some vehicles, or to provide information that could assist in the proper service of a vehicle. Properly trained technicians have the equipment, tools, safety instructions, and know-how to do a job properly and safely. If a condition is described, DO NOT assume that the bulletin applies to your vehicle, or that your vehicle will have that condition. See your GM dealer for information on whether your vehicle may benefit from the information.



WE SUPPORT VOLUNTARY TECHNICIAN CERTIFICATION