



Bulletin No.: PIT5538

Date: Jan-2017

Service Bulletin

PRELIMINARY INFORMATION

Subject: Park Brake Lever Contacts Rear Hub Flange After Rear Wheel Bearing Replacement

| Brand: | Model: | Model Year: | | VIN: | | Engine: | Transmission: |
|----------|--------|-------------|------|------|-----|---------|---------------|
| | | from | to | from | to | | |
| Cadillac | SRX | 2010 | 2016 | All | All | All | |

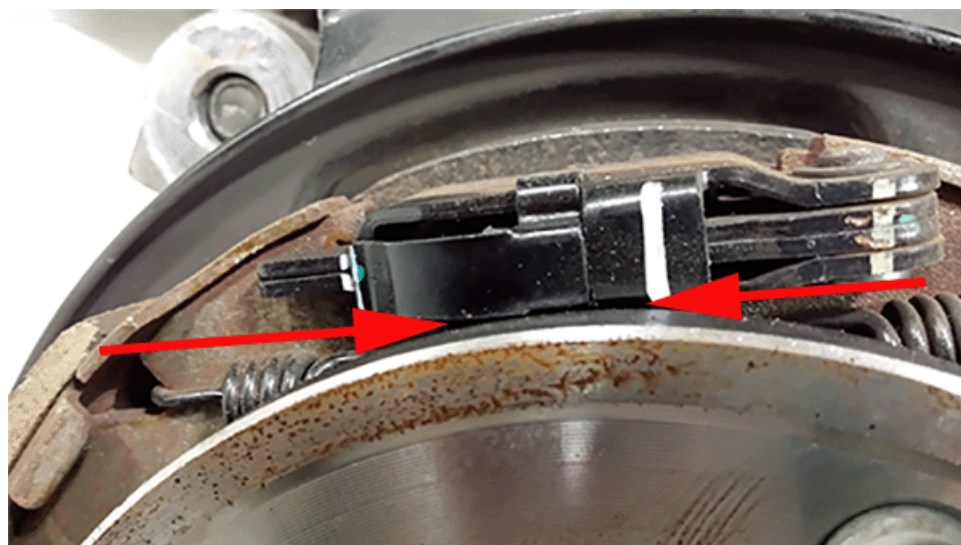
| | |
|----------------------------|---|
| Involved Region or Country | North America |
| Condition | Park brake lever contacts rear hub flange after rear bearing replacement. |
| Cause | Replacement Rear Bearing assemblies have a thicker hub flange that can cause an interference between the hub flange and park brake lever. |

Correction

Loosen park brake lever and move lever away from flange enough to create a gap

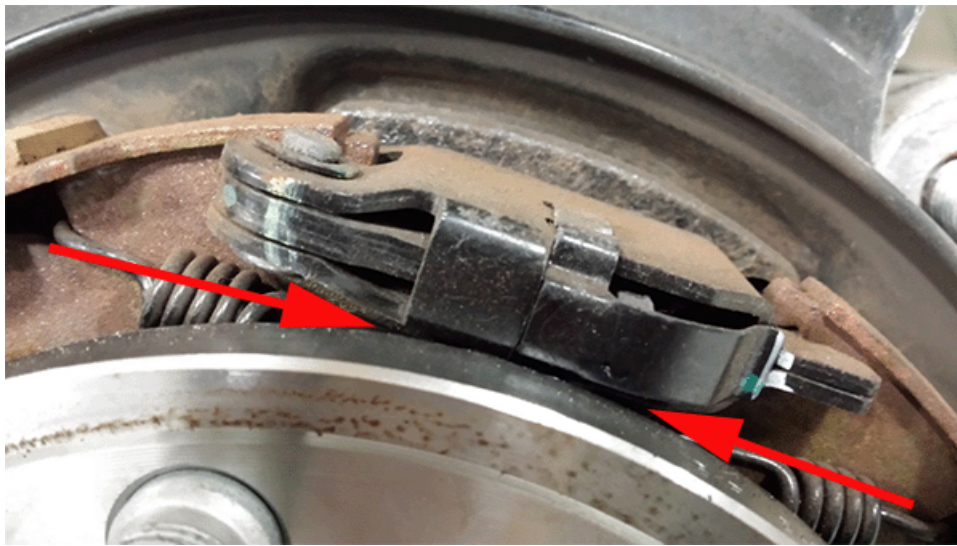
Before:

Showing incorrect gap



After:

Showing corrected gap



| | |
|----------|---|
| Version | 1 |
| Modified | |

GM bulletins are intended for use by professional technicians, NOT a "do-it-yourselfer". They are written to inform these technicians of conditions that may occur on some vehicles, or to provide information that could assist in the proper service of a vehicle. Properly trained technicians have the equipment, tools, safety instructions, and know-how to do a job properly and safely. If a condition is described, DO NOT assume that the bulletin applies to your vehicle, or that your vehicle will have that condition. See your GM dealer for information on whether your vehicle may benefit from the information.



WE SUPPORT VOLUNTARY TECHNICIAN CERTIFICATION