

|                     |                             |
|---------------------|-----------------------------|
| REFERENCE:          | Nova Bus Manuals            |
| SECTION:            | 14: Heating and Ventilation |
| RS N°:              | MQR 7621-816                |
| EFFECTIVE IN PROD.: | N/A                         |

APPLICATION DEADLINE: 2018JN18  
CLAIM REFERENCE NUMBER: WB-3969

|                |                                                                         |
|----------------|-------------------------------------------------------------------------|
| SUBJECT:       | Dust Intrusion in Baselight (60ft) - Coil Foam                          |
| JUSTIFICATION: | Dust intrusion in baselights area through the structure vertical tubes. |

| LEVEL | DESCRIPTION                                   | DIRECT CHARGES |          | TIME   |
|-------|-----------------------------------------------|----------------|----------|--------|
|       |                                               | LABOUR         | MATERIAL |        |
| 1     | Sealing vertical tubes of bus with coil foam. | Nova Bus       | Nova Bus | *5 hrs |
| 2     | -                                             | -              | -        | -      |

\*Note(5 hrs) - 1 hr of time is allotted to clean the accumulated dust in the baselight area and light lenses. 4 hrs is for the actual repair work.

#### MATERIAL

| QTY            | PART N°   | REV. | DESCRIPTION                               | REPLACES PART N° |
|----------------|-----------|------|-------------------------------------------|------------------|
| <b>LEVEL 1</b> |           |      |                                           |                  |
| 20             | N90216-01 | -    | INSULATION FOAM BLOCKER (5.5x3.5x1.5 THK) | -                |
| 8              | N90216-02 | -    | INSULATION FOAM BLOCKER (2x3.5x1.5 THK)   | -                |
| <b>LEVEL 2</b> |           |      |                                           |                  |
| -              | -         | -    | -                                         | -                |

Materials will be available within 42 days once your order has been placed. To order, please contact Prevost Parts by phone at 1-800-771-6682, by fax at 1-888-668-2555 or by email at [prevostparts.commandes@volvo.com](mailto:prevostparts.commandes@volvo.com). Specify document number, quantity of parts required and shipping address.

#### DISPOSAL OF PARTS

|                    |             |          |                                                                                                                   |
|--------------------|-------------|----------|-------------------------------------------------------------------------------------------------------------------|
| REMOVED PARTS ARE: | DISCARDED * | RETAINED | * Dispose of the unused parts and the defective parts in accordance with local environmental standards in effect. |
|                    | Yes         | -        |                                                                                                                   |

#### REVISION HISTORY

| REV. | DATE     | CHANGE DESCRIPTION | WRITTEN BY      |
|------|----------|--------------------|-----------------|
| NR   | 2017AL18 | Initial release    | Kumaraswamy K S |

| CLIENT                          | ORDER | ROAD NUMBER |      | VIN (2NVY/4RKY...) |               | QTY |
|---------------------------------|-------|-------------|------|--------------------|---------------|-----|
|                                 |       | FROM        | TO   | FROM               | TO            |     |
| Austin - CMTA - Texas           | L635  | 5001        | 5001 | S92U7C4500163      | S92U7C4500163 | 1   |
| Austin - CMTA - Texas           | L636  | 5002        | 5022 | S92U1D4500306      | S92U0D4500328 | 21  |
| Austin - CMTA - Texas           | LA17  | 5101        | 5107 | S92J2H9775763      | S92J3H9775769 | 7   |
| Demo Nova Bus Sales             | L724  | 7300        | 7301 | S92Y1D4500275      | S92Y3D4500276 | 2   |
| Houston - Texas                 | L737  | 1510        | 1510 | S92U4D4500297      | S92U4D4500297 | 1   |
| Houston - Texas                 | L755  | 1511        | 1579 | S92U4D4500333      | S92U8D4500402 | 69  |
| Houston - Texas                 | L952  | 1580        | 1580 | S92J5G9775318      | S92J5G9775318 | 1   |
| Houston - Texas                 | L982  | 1581        | 1599 | S92J5G9775514      | S92J5G9775545 | 19  |
| San Joaquin County - California | L768  | —           | —    | S92L4D4500422      | S92L3D4500427 | 6   |
| SEPTA - Pennsylvania            | L741  | 7355        | 7355 | S92L4E4500504      | S92L4E4500504 | 1   |
| SEPTA - Pennsylvania            | L742  | 7371        | 7414 | S92L6E4500729      | S92L7E4500772 | 44  |
| SEPTA - Pennsylvania            | L743  | 7356        | 7370 | S92L1E4500489      | S92L2E4500503 | 15  |
| SEPTA - Pennsylvania            | L745  | 7415        | 7415 | S92L0F4500873      | S92L0F4500873 | 1   |
| SEPTA - Pennsylvania            | L746  | 7416        | 7454 | S92L7F4500952      | S92L8F4501012 | 39  |
| SEPTA - Pennsylvania            | L749  | 7302        | 7354 | S92Y7D4500409      | S92L2E4500470 | 53  |
| SEPTA - Pennsylvania            | L861  | 7300        | 7484 | S92L5G9775188      | S92L8G9775220 | 32  |

**WARNING**

Follow your internal safety procedures.

**PROCEDURE**

- 1.1. Park the vehicle on an even surface with transmission in neutral (N).
- 1.2. Turn the ignition switch to OFF position and engage the parking brake.
- 1.3. Set the Master control switch in the STOP position (see Figure 1).

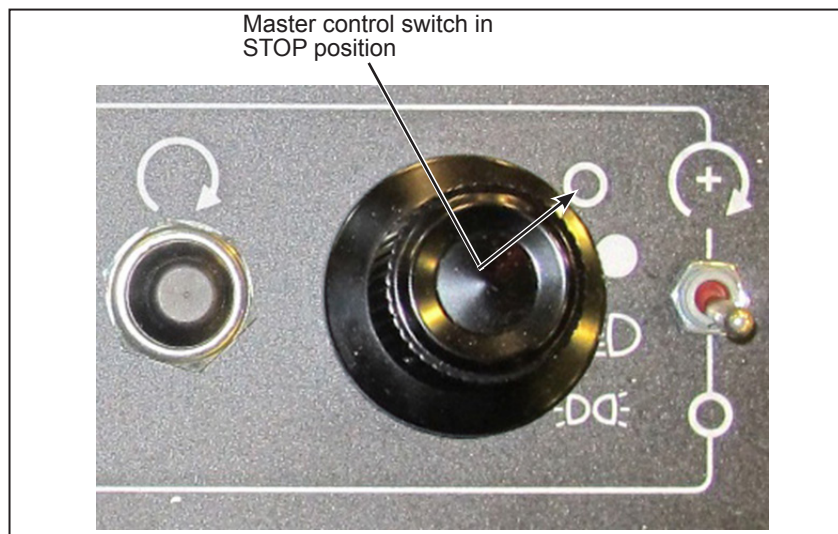


Figure 1 - Master Control Switch in STOP Position

**WARNING**

Before starting any work on the vehicle, make sure the vehicle is completely and securely stationary. Disconnect the starting circuit on the control box at the rear of the vehicle and place the battery disconnect switches in the OFF position.

- 1.4. Disconnect the battery ground cable. Insulate the terminals to avoid accidental grounding.

**NOTE**

Retain hardware if removed during the procedure for later reinstallation.

**NOTE**

See the manufacturer's manual, supplied by Nova Bus, for additional details and information.

- 1.5. Locate and open the ITS box (if present) on the street side baselight (see Figure 2).

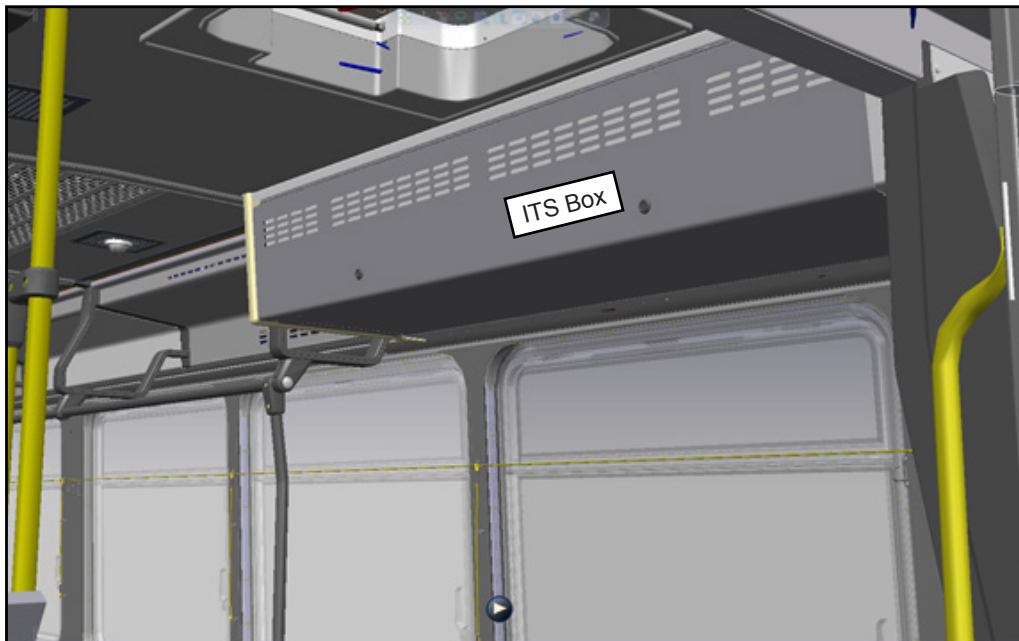


Figure 2 - Typical Location of ITS Box

- 1.6. Remove all the baselight access panels (all sides) and retain the hardware if removed (see Figure 3).

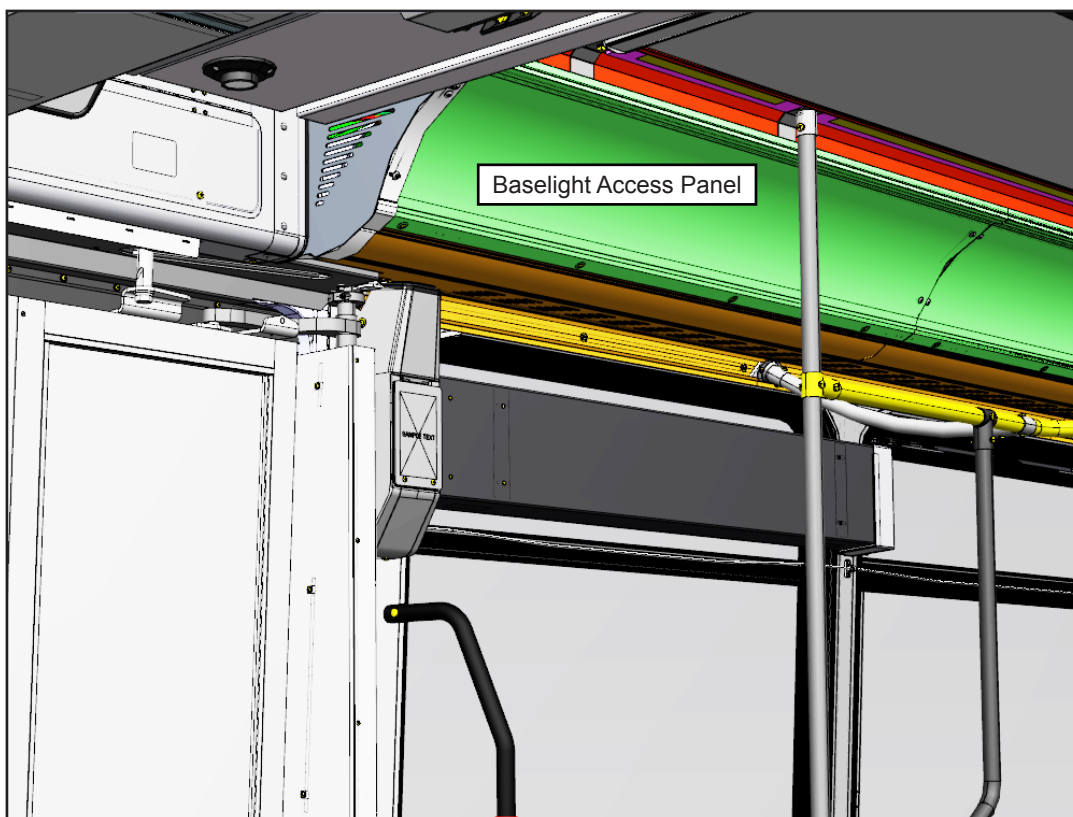


Figure 3 - Typical View of Baselight Access Panel

- 1.7. Identify the structure vertical tubes with top hole cut-outs in the baselights, as these will be blocked with Coilflex Foam to block dust/debris intrusion (see Figure 4 and Figure 5). The hole cut-outs are present along the length of the bus.

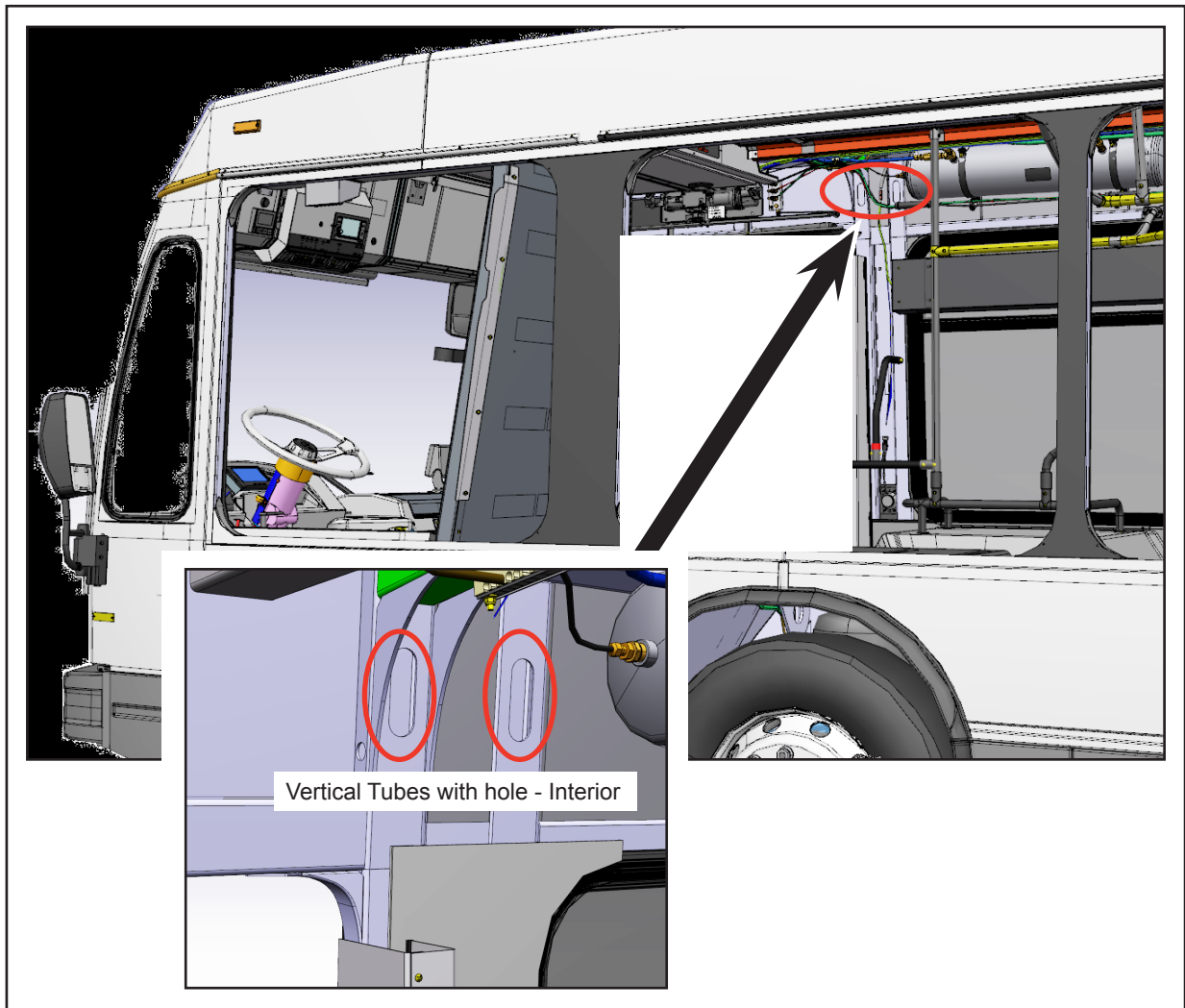


Figure 4 - Typical View of Vertical Tubes with Hole (Interior)



**NOTE**

60ft buses will have approx. 23 vertical tubes with hole cut-outs at the top.

- 1.8. Identify the standard HVAC drain position (A), to be filled with smaller foam piece (N90216-02) (see Figure 5). Other highlighted tubes to be filled with larger foam piece (N90216-01). Location subject to change based on HVAC position.

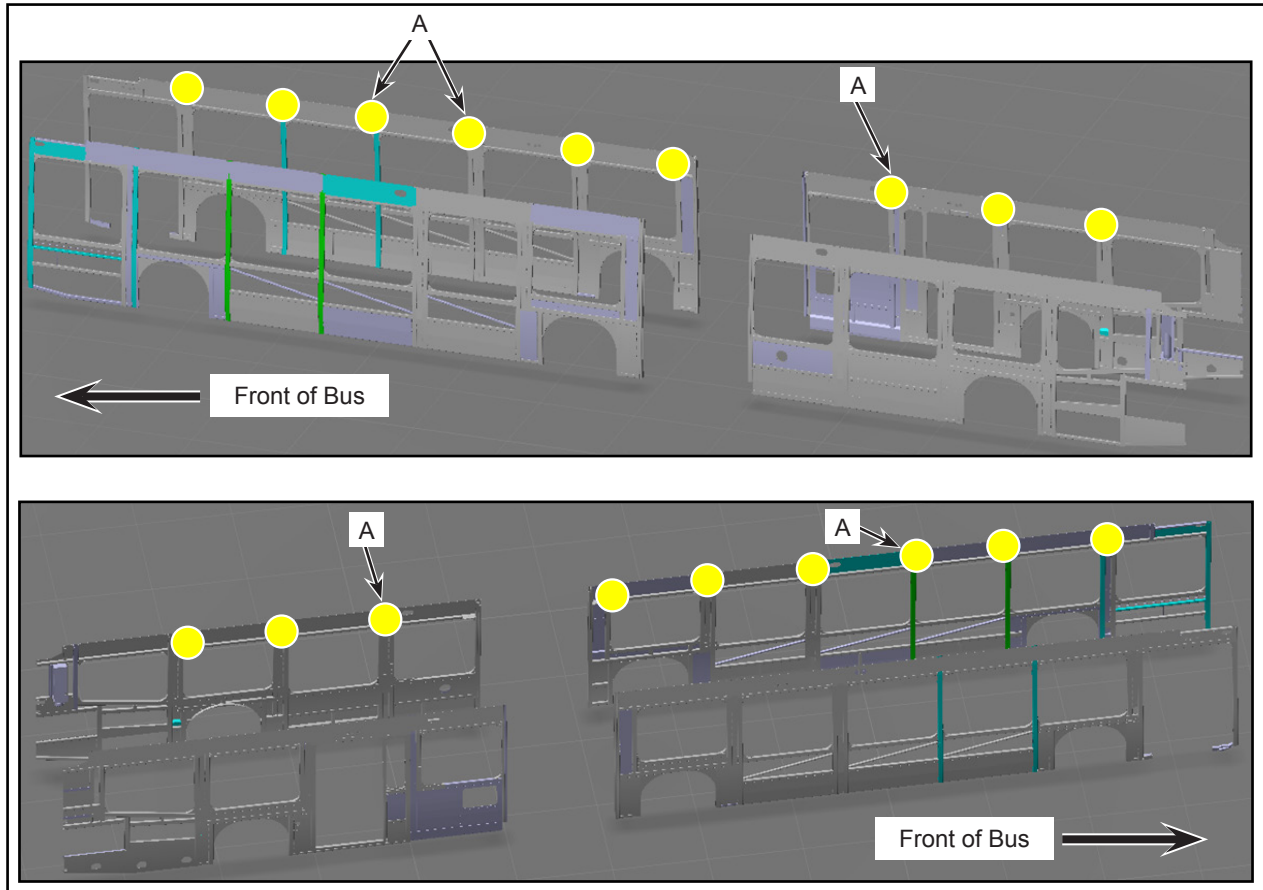


Figure 5 - Typical View of Hole Cut-outs in Vertical Tubes with Standard HVAC Drain Positions



**NOTE**

There are two sizes of foam pieces:

- Large Foam Piece: (5.5 x 3.5 x 1.5) mm thickness. Used for all tubes not obstructed by HVAC drains.
- Small Foam Piece: (2 x 3.5 x 1.5) mm thickness. Used for all tubes with HVAC drains.

- 1.9. Use the larger coil foam pieces to block all the cut-outs with no large obstruction (HVAC drains).
- 1.10. When installing, ensure that the foam fully expands inside the structure tube to block the air passage. The foam piece is oversized and will hold in place on all 4 surfaces (see Figure 6).
- 1.11. Ensure that at least 50% of the foam is hidden inside the tube (see Figure 6).

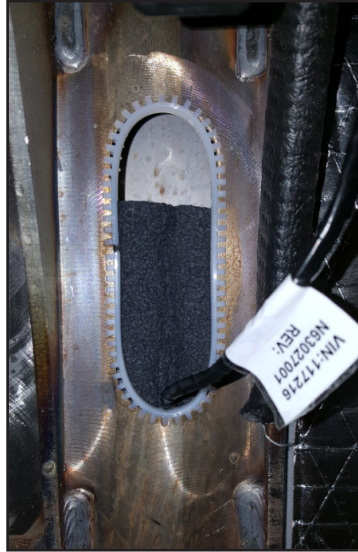


Figure 6 - Installation of Large Coil Foam Piece

- 1.12. If a hole and cut-out are present, ensure that the foam is low enough to cover the hole (see Figure 7).



Figure 7 - Typical View of Hole and Cut-out covered with the Large Foam Piece

- 1.13. Use the smaller foam pieces to block the top portion of the structure cut-outs with an HVAC drain (see Figure 8).

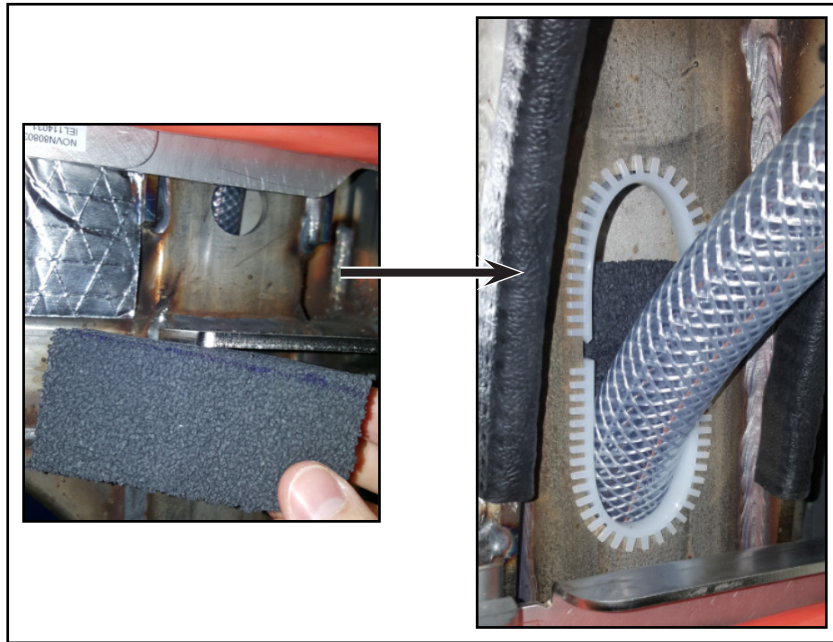


Figure 8 - Typical View of Smaller Foam Pieces to Block the Top Portion of the Structure

- 1.14. To block the small hole, the small foam piece can be split in two along its joint to reduce its size and fit easier into the hole (see Figure 9).

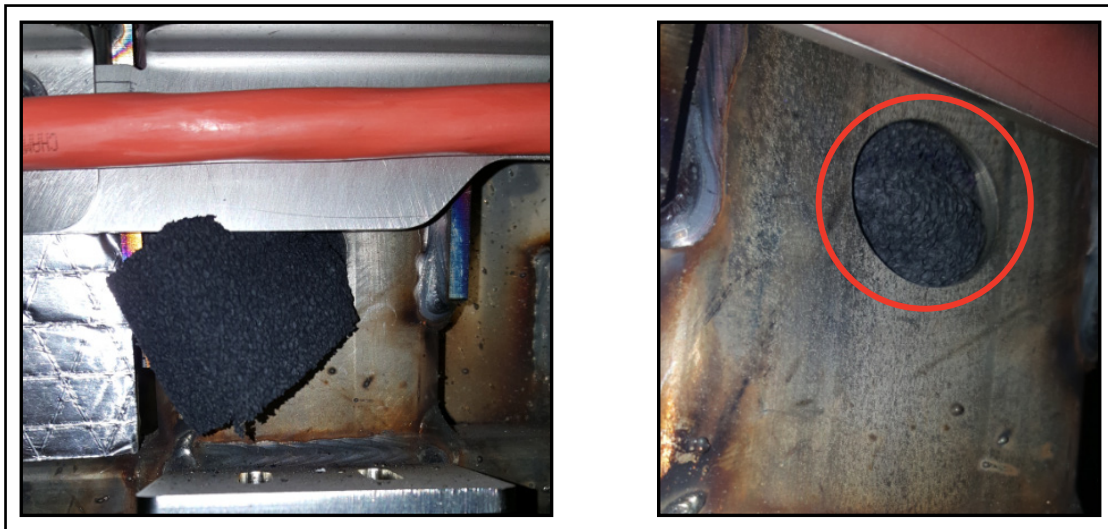
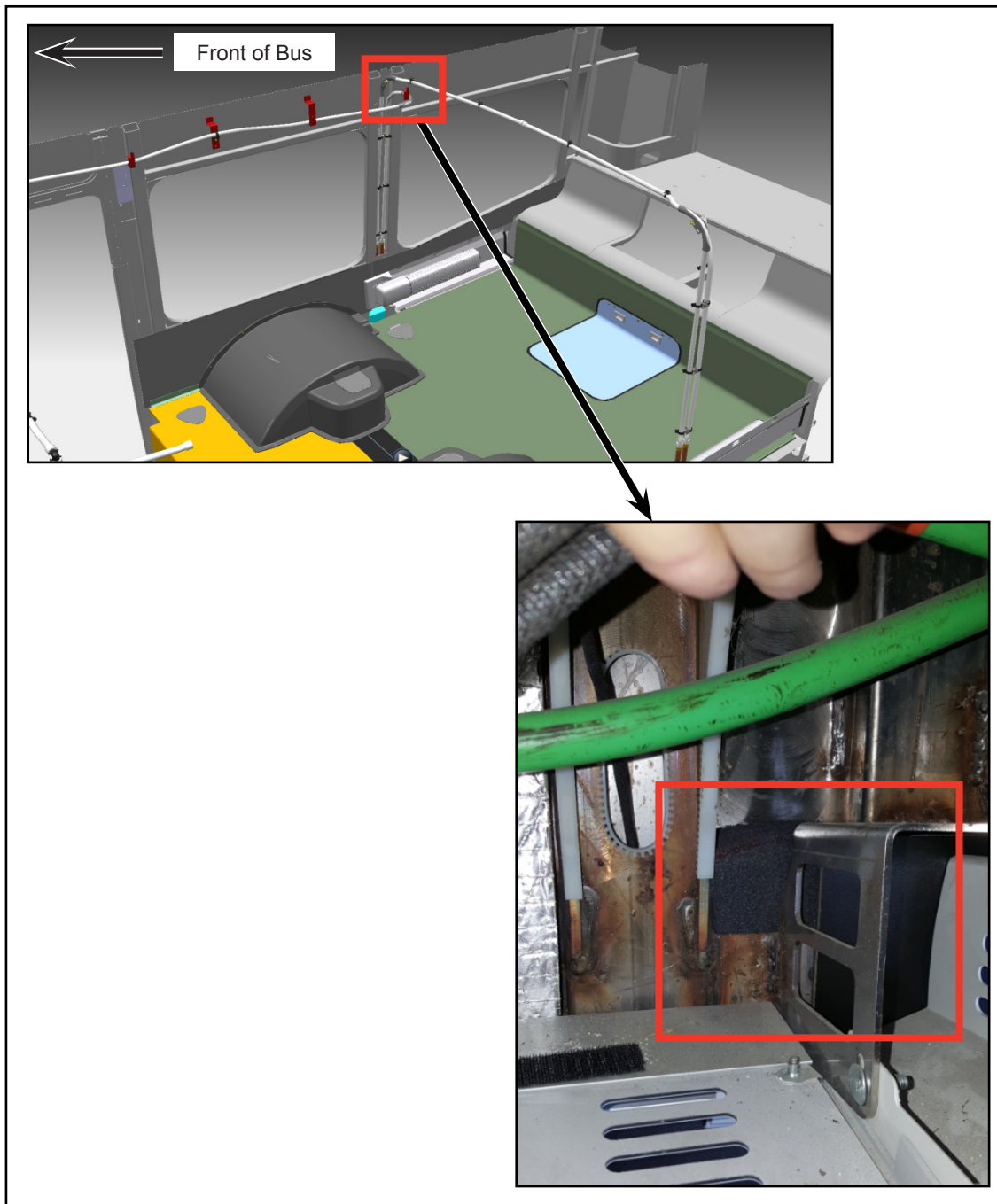


Figure 9 - Vertical Tube - HVAC Drain

- 1.15. Use the larger foam piece to seal the inter-wall area between the two vertical tubes behind the rear wheelhouse (both sides) (see Figure 10).

- 1.16. If no PEX or copper pipes are present, use a piece of large foam to block the hole leading inside the wall (see Figure 10).



*Figure 10 - Typical Location of Inter-wall*

- 1.17. If PEX or copper pipes are present, use a piece of large foam.
- 1.18. Split the large foam piece in two to block the hole leading inside the wall.
- 1.19. Use the thicker piece to block the rear of the PEX or copper pipe. Shimmy the foam piece on back of the pipes to block all rear air passages (see Figure 11).
- 1.20. Use the thinner piece to block the front. Pack the foam into place to block all front air passages (see Figure 11).

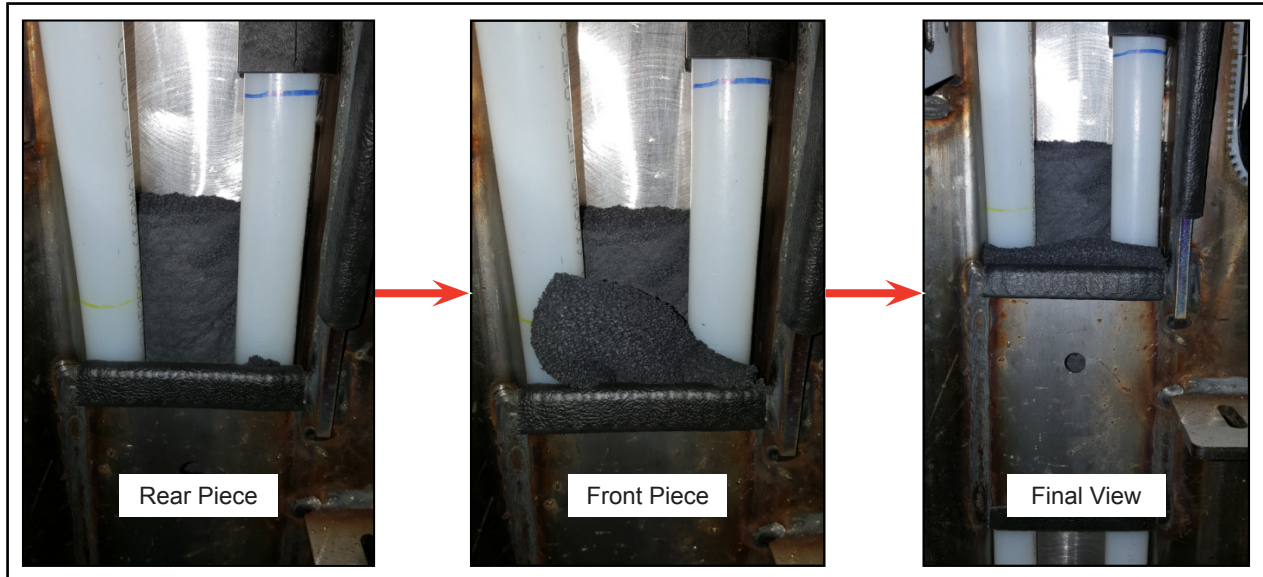


Figure 11 - Typical Method for blocking Air Passages

- 1.21. Install all the baselight access panels with retained hardware.
- 1.22. Close the ITS box (if present).
- 1.23. Connect the battery ground cable.
- 1.24. Set the Master control switch in the ON position.
- 1.25. The vehicle may be returned to service.❖