

REFERENCE:	Nova Bus Manuals
SECTION:	04: Front Suspension

APPLICATION DEADLINE: N/A

SUBJECT:	ZF wheel head suspension
JUSTIFICATION:	ZF introduced an optimized axial roller bearing

LEVEL	DESCRIPTION	DIRECT CHARGES		TIME
		LABOUR	MATERIAL	
1	Replace the axial roller bearing and lower seal ring with an optimized roller bearing.	Client	Client	5 hr
2	–	–	–	–

MATERIAL

QTY	PART N°	REV.	DESCRIPTION	REPLACES PART N°
LEVEL 1				
1	N8900105	–	Axial roller bearing	–
1	N8884433		Seal ring	
LEVEL 2				
–	–	–	–	–

To order, please contact Prevost Parts by phone at 1-800-771-6682, by fax at 1-888-668-2555 or by email at prevostparts.commandes@volvo.com. Specify document number, quantity of parts required and shipping address.

DISPOSAL OF PARTS

REMOVED PARTS ARE:	DISCARDED *	RETAINED	* Dispose of the unused parts and the defective parts in accordance with local environmental standards in effect.
	Yes	–	

REVISION HISTORY

REV.	DATE	CHANGE DESCRIPTION	WRITTEN BY
NR	2012OC30	Initial release	Isabel Estañ
R1	2017FE15	Client List modified. Figure 1 added.	André Pelletier

APPROVED BY:

PAGE 1 OF 11

Symbol	Meaning
Empty Field	No changes, the procedure applies
+	Contract added, the procedure applies
-	Contract removed, the procedure does not apply

SYMBOL	CLIENT	ORDER	ROAD NUMBER		VIN (2NVY/4RKY...)		QTY
			FROM	TO	FROM	TO	
+	Academy Bus - New Jersey	L231	—	—	L82U563000166	L82U163000178	13
+	Academy Bus - New Jersey	L333	—	—	L82U273000207	L82U473000211	5
+	Academy Bus - New Jersey	L339	—	—	L82U483000047	L82U883000052	5
+	Academy Bus - New Jersey	L340	—	—	L82U493000003	L82U193000007	5
+	Airdrie Transit - Alberta	L664	—	—	L82U2B3000507	L82U2B3000507	1
+	Ames Transportation Agency - Iowa	L707	660	661	S92U5C4500159	S92U1C4500160	2
+	Arrow Coach Line - Arkansas	L252	—	—	L82U963000235	L82U963000235	1
+	Arrow Coach Line - Arkansas	L494	—	—	L82U793000397	L82U793000397	1
+	Austin - CMTA - Texas	L635	5001	5001	S92U7C4500163	S92U7C4500163	1
+	BC Transit - BCT - British Columbia	L215	9201	9210	L82U663000001	L82U763000010	10
+	BC Transit - BCT - British Columbia	L236	9211	9231	L82U063000141	L82U663000161	21
+	BC Transit - BCT - British Columbia	L342	9232	9251	L82U173000294	L82U173000313	20
+	BC Transit - BCT - British Columbia	L343	9252	9267	L82U973000463	L82U073000478	16
+	BC Transit - BCT - British Columbia	L414	9268	9289	L82U983000299	L82U783000320	22
+	BC Transit - BCT - British Columbia	L417	9290	9297	L82U983000321	L82U183000328	8
+	BC Transit - BCT - British Columbia	L430	9301	9318	L82U483000503	L82U483000520	18
+	BC Transit - BCT - British Columbia	L458	9298	9300	L82U683000521	L82UX83000523	3
+	BC Transit - BCT - British Columbia	L463	9319	9333	L82U093000273	L82U093000287	15
+	BC Transit - BCT - British Columbia	L481	9334	9353	L82U794000004	L82U094000023	20
+	BC Transit - BCT - British Columbia	L486	9354	9369	L82U294000024	L82U494000039	16
+	BC Transit - BCT - British Columbia	L484	9370	9403	L82U494000090	L82U494000123	34
+	BC Transit - BCT - British Columbia	L487	9404	9433	L82U094000149	L82U794000178	30
+	BC Transit - BCT - British Columbia	L604	9434	9434	L82U5C3000597	L82U5C3000597	1
	Belleville Transit - Ontario	L179	179-1	179-1	L82UX53000033	L82UX53000033	1
+	Belleville Transit - Ontario	L180	180-1	180-1	L82U753000118	L82U753000118	1
+	Belleville Transit - Ontario	L176	—	—	L82U563000233	L82U563000233	1
+	Belleville Transit - Ontario	L354	354-1	354-1	L82U983000089	L82U983000089	1
+	Belleville Transit - Ontario	L357	357-1	357-1	L82U783000091	L82U783000091	1
+	Belleville Transit - Ontario	L542	—	—	L82UXA3000088	L82U8A3000090	3
+	Belleville Transit - Ontario	L598	—	—	L82U5A3000581	L82U7A3000582	2
+	Belleville Transit - Ontario	L655	—	—	L82U3B3000385	L82U3B3000385	1
+	Belleville Transit - Ontario	L702	—	—	L82U4D3000706	L82U4D3000706	1
	Belleville Transit - Ontario (L168)	L129	—	—	L82S633000199	L82S933000200	2
+	Bow Valley Transit - Alberta	L347	1	4	L82W083000175	L82W683000178	4
+	Bow Valley Transit - Alberta	L712	5	6	L82U6C3000804	L82U8C3000805	2
+	Brampton - Ontario	L209	0601	0621	L82U253000222	L82U853000242	20
+	Brampton - Ontario	L238	0609	0609	L82U663000094	L82U663000094	1

Symbol	Meaning
Empty Field	No changes, the procedure applies
+	Contract added, the procedure applies
-	Contract removed, the procedure does not apply

SYMBOL	CLIENT	ORDER	ROAD NUMBER		VIN (2NVY/4RKY...)		QTY
			FROM	TO	FROM	TO	
+	Brampton - Ontario	L253	0622	0632	L82U463000269	L82U763000279	11
+	Brampton - Ontario	L284	0633	0638	L82U363000280	L82U263000285	6
+	Brampton - Ontario	L348	0701	0715	L82U273000479	L82U773000493	15
+	Brampton - Ontario	L349	0801	0810	L82U283000094	L82UX83000103	10
+	Brampton - Ontario	L424	0811	0827	L82U783000463	L82U083000479	17
+	Brampton - Ontario	L425	0901	0916	L82U993000045	L82U593000060	16
+	Brampton - Ontario	L501	0917	0926	L82U893000506	L82U893000523	10
	Brantford - Ontario	L150	—	—	L82U643000173	L82U843000174	2
+	Brantford - Ontario	L256	—	—	L82U363000229	L82U363000229	1
+	Brantford - Ontario	L257	—	—	L82UX63000230	L82UX63000230	1
+	Brantford - Ontario	L258	—	—	L82U163000231	L82U163000231	1
+	Brantford - Ontario	L175	—	—	L82U363000232	L82U363000232	1
+	Brantford - Ontario	L351	9071	9075	L82U883000018	L82UX83000022	5
+	Brantford - Ontario	L422	9081	9084	L82U183000524	L82U783000527	4
+	Brantford - Ontario	L547	10101	10105	L82X6A3000082	L82X3A3000086	5
+	Brantford - Ontario	L663	10121	10121	L82U1B3000532	L82U1B3000532	1
+	Brantford - Ontario	L718	10123	10125	L82U5C3000826	L82U9C3000828	3
+	Calgary Transit - Alberta	L601	8101	8114	L82U5A4000099	L82U4A4000112	14
+	Calgary Transit - Alberta	L607	8115	8130	L82UXA3000477	L82U6A3000492	16
+	Calgary Transit - Alberta	L615	8131	8158	L82U1B4000019	L82U4B4000046	28
+	Calgary Transit - Alberta	L624	—	—	L82U4B4000077	L82U6B4000078	2
+	Calgary Transit - Alberta	L637	8161	8180	L82U7B3000356	L82U2B3000376	20
+	Calgary Transit - Alberta	L709	8181	8200	L82UXC3000806	L82U3C3000825	20
+	Central Oklahoma Transportation Authority	L619	—	—	L82X7C3000367	L82X7C3000367	1
+	Centre de Formation du Transport Routier - CFTR Québec	L356	356-2	356-2	L82U883000231	L82U883000231	1
+	Clemson Area Transit - South Carolina	L617	—	—	S92U5C4500002	S92U5C4500002	1
+	CMBC (TransLink) - British Columbia	L317	9601	9601	L82U973000155	L82U973000155	1
+	CMBC (TransLink) - British Columbia	L301	9602	9649	L82U373000216	L82U173000263	48
+	CMBC (TransLink) - British Columbia	L302	9650	9706	L82U673000386	L82U973000351	56
+	CMBC (TransLink) - British Columbia	L341	V9707	V9725	L82U373000412	L82U573000430	19
+	CMBC (TransLink) - British Columbia	L380	9726	9747	L82U483000209	L82U683000230	22
+	CMBC (TransLink) - British Columbia	L381	9748	9781	L82U383000329	L82U483000369	34
+	CMBC (TransLink) - British Columbia	L382	9782	9791	L82U083000370	L82U783000379	10
+	CMBC (TransLink) - British Columbia	L412	9401	9401	L82X993000136	L82X993000136	1
+	CMBC (TransLink) - British Columbia	L454	9402	9470	L82X793000359	L82XX93000453	69
+	CMBC (TransLink) - British Columbia	L482	9492	9517	L82X894000040	L82X094000064	25

Symbol	Meaning
Empty Field	No changes, the procedure applies
+	Contract added, the procedure applies
-	Contract removed, the procedure does not apply

SYMBOL	CLIENT	ORDER	ROAD NUMBER		VIN (2NVY/4RKY...)		QTY
			FROM	TO	FROM	TO	
+	CMBC (TransLink) - British Columbia	L455	9471	9491	L82X093000459	L82X993000489	21
+	CMBC (TransLink) - British Columbia	L483	9518	9542	L82X294000065	L82X594000089	25
+	CMBC (TransLink) - British Columbia	L532	9543	9551	L82U093000497	L82U693000505	9
+	CMBC (TransLink) - British Columbia	L533	9552	9573	L82U193000511	L82U093000537	22
+	CMBC (TransLink) - British Columbia	L534	9574	9590	L82U694000124	L82U894000139	16
+	CMBC (West Vancouver) - British Columbia	L345	701	702	L82U373000264	L82U573000265	2
+	CMBC (West Vancouver) - British Columbia	L401	801	803	L82U983000206	L82U283000208	3
+	CMBC (West Vancouver) - British Columbia	L539	901	909	L82U494000140	L82U994000148	9
+	CT Transit - Connecticut	L554	1041	1065	S92U1A4000139	S92U0A4000164	25
+	CT Transit - Connecticut	L571	1101	1110	S92YXB4000144	S92Y4B4000169	10
+	Demo - Articulated Bus	L433	—	—	S92UX93000029	S92UX93000029	1
+	Demo - Engineering Platform 2010 (Altoona)	L373	373-1	373-1	L82UX83000151	L82UX83000151	1
+	Demo - Plateforme 2010 (ATQ)	L456	—	—	L82U893000019	L82U893000019	1
+	Demo - Proto Platform 2010	L271	—	—	L82U283000001	L82U283000002	2
+	Duke University - North Carolina	L651	—	—	S92Y1B4000145	S92Y3B4000146	2
+	Duke University - North Carolina (ref. L703)	L641	—	—	L82U9C4500012	L82U1C4500022	8
+	Durham Region Transit - Ontario	L199	169	169	L82U453000125	L82U453000125	1
+	Durham Region Transit - Ontario	L212	—	—	L82UX53000128	L82UX53000128	1
+	Durham Region Transit - Ontario	L213	—	—	L82U153000129	L82U153000129	1
+	Durham Region Transit - Ontario	L182	182-1	182-1	L82U653000157	L82U653000157	1
+	Durham Region Transit - Ontario	L224	170	170	L82U963000011	L82U963000011	1
	First Transit Inc. (ref. L173)	L144	—	—	L82U543000049	L82U543000049	1
	Fredericton - New Brunswick	L146	8031	8032	L82U543000164	L82U743000165	2
+	Fredericton - New Brunswick	L178	8053	8053	L82U653000109	L82U653000109	1
+	Fredericton - New Brunswick	L225	8061	8061	L82U663000032	L82U663000032	1
+	Fredericton - New Brunswick	L240	8062	8062	L82U163000181	L82U163000181	1
+	Fredericton - New Brunswick	L281	8063	8063	L82U363000263	L82U363000263	1
+	Fredericton - New Brunswick	L276	8064	8065	L82U463000286	L82U663000287	2
+	Fredericton - New Brunswick	L289	—	—	L82U573000072	L82U573000072	1
+	Fredericton - New Brunswick	L282	8071	8072	L82UX73000097	L82U173000098	2
+	Fredericton - New Brunswick	L375	8081	8081	L82U983000142	L82U983000142	1
+	Fredericton - New Brunswick	L369	1	1	L82U693000018	L82U693000018	1
+	Fredericton - New Brunswick	L672	8111	8112	L82U0B3000540	L82U2B3000541	2
+	Fredericton - New Brunswick	L688	8113	8113	L82U8C3000643	L82U8C3000643	1
+	Gaylord Opryland - Nashville, Tennessee	L223	—	—	L82VX53000221	L82VX53000221	1
+	Gaylord Opryland - Nashville, Tennessee	L283	—	—	L82V773000034	L82V773000034	1
+	Gaylord Opryland - Nashville, Tennessee	L353	—	—	L82U583000008	L82U383000010	3
	Grand River Transit - GRT - Ontario	L145	2400	2417	L82U143000114	L82U143000131	18

Symbol	Meaning
Empty Field	No changes, the procedure applies
+	Contract added, the procedure applies
-	Contract removed, the procedure does not apply

SYMBOL	CLIENT	ORDER	ROAD NUMBER		VIN (2NVY/4RKY...)		QTY
			FROM	TO	FROM	TO	
	Grand River Transit - GRT - Ontario	L161	2418	2433	L82U643000254	L82U843000269	16
+	Grand River Transit - GRT - Ontario	L243	2601	2614	L82U463000188	L82U363000201	14
+	Grand River Transit - GRT - Ontario	L337	2701	2712	L82U373000281	L82UX73000293	12
+	Grand River Transit - GRT - Ontario	L338	2713	2724	L82U773000431	L82U173000442	12
+	Grand River Transit - GRT - Ontario	L404	8007	8021	L82U683000244	L82U683000258	15
+	Grand River Transit - GRT - Ontario	L405	8022	8027	L82W683000259	L82WX83000264	6
+	Grand River Transit - GRT - Ontario	L464	20901	20913	L82U193000296	L82U493000308	13
+	Grand River Transit - GRT - Ontario	L560	21001	21009	L82U2A3000246	L82U1A3000254	9
+	Grand River Transit - GRT - Ontario	L633	21101	21115	L82U7B3000289	L82U8B3000303	15
+	Grand River Transit - GRT - Ontario	L599	21116	21118	L82X9B3000465	L82X2B3000467	3
+	Grand River Transit - GRT - Ontario	L631	21119	21121	L82X4B3000468	L82X2B3000470	3
+	Grand River Transit - GRT - Ontario	L668	21201	21220	L82U6C3000737	L82UXC3000756	20
+	Greater Toronto Airports Authority - GTAA - Ontario	L432	432-1	432-1	L82U793000061	L82U793000061	1
+	Greater Toronto Airports Authority - GTAA - Ontario	L477	L477-1	L477-1	L82U194000001	L82U194000001	1
+	Greater Toronto Airports Authority - GTAA - Ontario	L616	—	—	L82U4C4500001	L82U4C4500001	1
+	Guelph - Ontario	L211	183	184	L82U653000126	L82U853000127	2
+	Guelph - Ontario	L187	185	188	L82U353000214	L82U953000217	4
+	Guelph - Ontario	L241	189	194	L82U363000182	L82U263000187	6
+	Guelph - Ontario	L397	195	198	L82U183000152	L82U783000155	4
+	Guelph - Ontario	L418	199	205	L82U883000410	L82U983000416	7
+	Guelph - Ontario	L431	206	220	L82U793000030	L82U793000044	15
+	Guelph - Ontario	L579	221	224	L82UXA3000401	L82U5A3000404	4
+	Guelph - Ontario	L669	225	228	L82U9B3000536	L82U4B3000539	4
+	Guelph - Ontario	L715	234	235	L82U3C3000792	L82U5C3000793	2
+	Halifax - Nova Scotia	L558	717	731	S92UXA3000293	S92U6A3000307	15
+	Halifax - Nova Scotia	L613	732	741	S92UXB3000019	S92UXB3000028	10
+	Halifax - Nova Scotia	L693	526	534	L82U8C3000657	L82U7C3000665	9
+	Halifax - Nova Scotia	L710	1160	1161	L82U7C3000780	L82U9C3000781	2
+	Halifax - Nova Scotia	L708	742	761	S92UXC3000782	S92U3C3000803	20
+	Honolulu - Hawaii	L559	201	224	L82U6A4000113	L82U7A4000136	24
+	Kings Transit - Nova Scotia	L581	—	—	L82U2B3000054	L82U2B3000054	1
+	Leduc Bus Line - Ontario	L181	—	—	L82V853000119	L82V853000119	1
+	Leduc Bus Line - Ontario	L228	228-1	228-1	L82V663000041	L82V663000041	1
+	Leduc Bus Line - Ontario	L346	—	—	L82UX83000053	L82UX83000053	1
+	Lethbridge - Alberta	L489	165	169	L82U493000454	L82U193000458	5
+	Marketing Sales Demo - MSD 1 ISB Hybrid	L548	—	—	L82X5A3000087	L82X5A3000087	1
+	Marketing Sales Demo - MSD 6 Houston	L628	—	—	L82U8C4500003	L82UXC4500004	2

Symbol	Meaning
Empty Field	No changes, the procedure applies
+	Contract added, the procedure applies
-	Contract removed, the procedure does not apply

SYMBOL	CLIENT	ORDER	ROAD NUMBER		VIN (2NVY/4RKY...)		QTY
			FROM	TO	FROM	TO	
+	Minnesota Valley Transit Authority - MVTA	L706	4252	4258	L82U4C4500127	L82UXC4500133	7
	Moncton (Codiac) - New Brunswick	L147	504	505	L82U943000166	L82U043000167	2
+	Moncton (Codiac) - New Brunswick	L226	506	507	L82U863000033	L82UX63000034	2
+	Moncton (Codiac) - New Brunswick	L334	600	603	L82U673000212	L82U173000215	4
+	Moncton (Codiac) - New Brunswick	L358	358-1	358-1	L82U093000001	L82U093000001	1
+	Moncton (Codiac) - New Brunswick	L361	361-1	361-1	L82U293000002	L82U293000002	1
+	Moncton (Codiac) - New Brunswick	L569	—	—	L82U4B4000001	L82U4B4000001	1
+	Moncton (Codiac) - New Brunswick	L570	—	—	L82U6B4000002	L82U6B4000002	1
+	Moose Jaw - Saskatchewan	L344	17	25	L82U083000143	L82U883000147	5
+	New York City Transit - New York	L536	1200	1201	S92U793000490	S92U993000491	2
+	New York City Transit - New York	L545	1202	1289	S92U5A4000001	S92U0A4000098	88
+	New York City Transit - New York	L608	8000	8014	L82U6B4000047	L82U0B4000061	15
+	New York City Transit - New York	L620	8015	8074	L82U2B4000062	L82U7B4000123	60
+	New York City Transit - New York	L621	8075	8089	L82U9B4000124	L82U9B4000138	15
+	New York City Transit - New York	L643	5895	5895	S92U1B4000143	S92U1B4000143	1
+	New York City Transit - New York	L670	5770	5894	S92U9B4000147	S92UXC4500061	125
+	New York City Transit - New York	L681	5896	5283	S92U2C4500023	S92U9C4500195	122
+	New York City Transit - New York	L692	5284	5363	S92U3C4500158	S92U3D4500274	80
+	Niagara Falls - Ontario	L499	2986	2989	L82U093000564	L82U693000567	4
+	Niagara Falls - Ontario	L652	—	—	S92U3C3000607	S92U6C3000617	11
+	Niagara Falls - Ontario	L653	—	—	L82U9C3000618	L82U9C3000621	5
+	Niagara Parks Commission - Ontario	L685	—	—	S92U9C3000644	S92U8C3000652	9
+	Niagara Parks Commission - Ontario	L656	—	—	L82U0C3000653	L82U2C3000654	2
	Ottawa - Ontario	L162	162-1	162-1	L82V343000270	L82V343000270	1
	Peterborough - Ontario	L130	60017	60021	L82S143000001	L82S943000005	5
	Peterborough - Ontario	L159	60022	60024	L82S443000168	L82S243000170	3
+	Peterborough - Ontario	L202	—	—	L82U253000110	L82U653000112	3
+	Peterborough - Ontario	L411	36	50	L82U283000354	L82U083000532	15
+	Peterborough - Ontario	L490	—	—	L82UX93000345	L82U593000348	4
+	Red Deer - Alberta	L726	—	—	L82UXC3000840	L82U1C3000841	2
	Regina - Saskatchewan	L166	598	603	L82U453000027	L82U853000032	6
	Regina - Saskatchewan	L183	604	608	L82U853000046	L82UX53000050	5
+	Regina - Saskatchewan	L239	609	610	L82U363000179	L82UX63000180	2
+	Regina - Saskatchewan	L304	611	616	L82U373000457	L82U773000462	6
+	Regina - Saskatchewan	L459	617	624	L82UX83000537	L82U783000544	8
+	Regina - Saskatchewan	L356	356-1	356-1	L82U883000150	L82U883000150	1
+	Regina - Saskatchewan	L360	—	—	L82U283000290	L82U283000290	1

Symbol	Meaning
Empty Field	No changes, the procedure applies
+	Contract added, the procedure applies
-	Contract removed, the procedure does not apply

SYMBOL	CLIENT	ORDER	ROAD NUMBER		VIN (2NVY/4RKY...)		QTY
			FROM	TO	FROM	TO	
+	Regina - Saskatchewan	L476	625	628	L82U893000313	L82U393000316	4
+	Regina - Saskatchewan	L561	631	644	L82U8B4000003	L82UXB4000018	14
+	Regina - Saskatchewan	L639	645	654	L82U1B3000336	L82U2B3000345	10
+	Saskatoon - Saskatchewan	L359	—	—	S92U583000289	S92U583000289	1
+	Saskatoon - Saskatchewan	L551	1005	1007	S92UXA3000178	S92U8A3000180	3
+	Saskatoon - Saskatchewan	L568	—	—	S92U9B3000013	S92U9B3000013	1
+	Saskatoon - Saskatchewan	L618	—	—	S92U1C3000377	S92U1C3000377	1
+	Saskatoon - Saskatchewan	L690	1201	1204	L82U6C3000690	L82U1C3000693	4
+	Sault Ste-Marie Transit Services - Ontario (ref. L686)	L641	135	139	L82U7C4500008	L82U6C4500016	5
+	St. John - New Brunswick	L272	—	—	S92U483000011	S92U483000011	1
+	St. John - New Brunswick	L273	—	—	S92U383000050	S92U383000050	1
+	St. John's - Newfoundland	L242	0753	0756	L82U273000028	L82U273000031	4
+	St. John's - Newfoundland	L352	0857	0861	L82U683000003	L82U383000007	5
+	St. John's - Newfoundland	L403	0962	0965	L82U299300014	L82U493000017	4
+	St. John's - Newfoundland	L503	1066	1066	L82U4A3000071	L82U4A3000071	1
+	St. John's - Newfoundland	L687	1201	1209	L82U7C3000598	L82U2C3000606	9
+	Stratford - Ontario	L371	—	—	L82U183000104	L82U183000104	1
+	Stratford - Ontario	L493	—	—	L82U2A3000019	L82U2A3000019	1
+	Stratford - Ontario	L634	—	—	L82UXB3000352	L82UXB3000352	1
	Strathcona County Transit - Alberta	L177	921	923	L82U953000024	L82U253000026	3
+	Strathcona County Transit - Alberta	L233	924	929	L82V963000101	L82V863000106	6
+	Strathcona County Transit - Alberta	L303	930	936	L82U073000156	L82U673000162	7
+	Strathcona County Transit - Alberta	L383	—	—	L82U083000269	L82U083000269	1
+	Strathcona County Transit - Alberta	L406	937	939	L82U783000270	L82U083000272	3
+	Strathcona County Transit - Alberta	L407	940	943	L82W083000273	L82W683000276	4
+	Strathcona County Transit - Alberta	L457	944	949	L82U683000597	L82U683000602	6
+	Strathcona County Transit - Alberta	L523	2010	2010	L82U693000603	L82U693000603	1
+	Strathcona County Transit - Alberta	L524	3005	3010	L82X593000604	L82X493000609	6
+	Strathcona County Transit - Alberta	L580	2011	2023	L82U1A3000464	L82U8A3000476	13
+	Strathcona County Transit - Alberta	L659	2024	2028	L82U7B3000440	L82U4B3000444	5
+	Sudbury - Ontario	L208	—	—	L82U653000191	L82UX53000193	3
+	Sudbury - Ontario	L250	—	—	L82U063000236	L82U263000240	5
+	Sudbury - Ontario	L251	—	—	L82U063000241	L82U263000242	2
+	Sudbury - Ontario	L293	—	—	L82U673000128	L82U673000131	4
+	Sudbury - Ontario	L294	—	—	L82U873000132	L82UX73000133	2
+	Sudbury - Ontario	L385	781	782	L82U583000137	L82U783000138	2
+	Sudbury - Ontario	L399	783	784	L82U983000139	L82U583000140	2

Symbol	Meaning
Empty Field	No changes, the procedure applies
+	Contract added, the procedure applies
-	Contract removed, the procedure does not apply

SYMBOL	CLIENT	ORDER	ROAD NUMBER		VIN (2NVY/4RKY...)		QTY
			FROM	TO	FROM	TO	
+	Sudbury - Ontario	L386	785	785	L82U783000141	L82U783000141	1
+	Sudbury - Ontario	L465	791	795	L82U593000317	L82U793000321	5
+	Sudbury - Ontario	L552	801	808	L82U3A3000238	L82U0A3000245	8
+	Sudbury - Ontario	L632	811	817	L82U9B3000326	L82U4B3000332	7
+	Thunder Bay - Ontario	L221	142	144	L82U863000033	L82UX63000034	3
+	Thunder Bay - Ontario	L285	—	—	L82U473000046	L82U873000048	3
+	Thunder Bay - Ontario	L408	—	—	L82U283000239	L82U483000243	5
+	Thunder Bay - Ontario	L453	—	—	L82U283000533	L82U683000535	3
+	Thunder Bay - Ontario	L488	—	—	L82U193000332	L82U593000334	3
+	Thunder Bay - Ontario	L614	—	—	L82UXB3000061	L82U3B3000063	3
+	Thunder Bay - Ontario	L662	20168	20168	L82U3B3000533	L82U7B3000535	3
+	Timmins - Ontario	L184	184-1	184-1	L82UX53000081	L82UX53000081	1
+	Timmins - Ontario	L254	254-1	254-1	L82UX73000035	L82UX73000035	1
+	Timmins - Ontario	L426	—	—	L82U783000480	L82U883000536	2
+	Timmins - Ontario	L475	—	—	L82U493000311	L82U693000312	2
+	Timmins - Ontario	L550	—	—	L82U8A3000171	L82UXA3000172	2
+	Timmins - Ontario	L661	—	—	L82U9B3000486	L82U9B3000486	1
+	Timmins - Ontario	L720	12-98	12-98	L82U0C3000829	L82U0C3000829	1
	Timmins - Ontario (ref. L189)	L144	—	—	L82U343000048	L82U343000048	1
+	University of Alabama - Alabama	L295	7001	7001	L82U173000134	L82U173000134	1
+	University of Alabama - Alabama	L296	7002	7003	L82U373000135	L82U573000136	2
+	University of Alabama - Alabama	L310	7004	7013	L82U973000267	L82UX73000276	10
+	University of Alabama - Alabama	L311	7014	7017	L82U173000277	L82U173000280	4
+	University of Alabama - Alabama	L479	479-1	479-1	L82U394000002	L82U394000002	1
+	University of Alabama - Alabama	L480	480-1	480-1	L82U594000003	L82U594000003	1
+	University of Alabama - Alabama	L573	—	—	L82U9A4000137	L82U0A4000138	2
+	University of Alabama - Alabama	L640	—	—	L82U9B4000141	L82U0B4000142	2
+	University of Alabama - Alabama	L671	7024	7025	L82U5C4500119	L82U1C4500120	2
+	University of Colorado - Colorado	L237	—	—	L82U163000164	L82U363000165	2
+	University of Colorado - Colorado	L336	—	—	L82U773000266	L82U773000266	1
+	University of Colorado - Colorado	L427	—	—	S92U693000027	S92U693000027	1
+	University of Colorado - Colorado	L428	—	—	S92U893000028	S92U893000028	1
+	University of Colorado - Colorado	L627	—	—	S92UXB4000139	S92U6B4000140	2
	Walt Disney World - Florida	L174	174-1	174-1	L82U553000005	L82U553000005	1
+	Walt Disney World - Florida	L535	1204	1213	L82UXA4000003	L82U0A4000012	10
+	Whitehorse - Yukon	L278	—	—	L82U563000264	L82U263000268	4
+	Whitehorse - Yukon	L423	—	—	L82U983000481	L82U083000482	2
+	Whitehorse - Yukon	L563	38	41	L82U3A3000255	L82U9A3000258	4

Symbol	Meaning
Empty Field	No changes, the procedure applies
+	Contract added, the procedure applies
-	Contract removed, the procedure does not apply

SYMBOL	CLIENT	ORDER	ROAD NUMBER		VIN (2NVY/4RKY...)		QTY
			FROM	TO	FROM	TO	
+	Windsor - Ontario	L186	555	564	L82U053000181	L82U453000190	10
+	Woodstock - Ontario	L255	—	—	L82U163000228	L82U163000228	1
+	Woodstock - Ontario	L335	—	—	L82U083000093	L82U083000093	1
+	Woodstock - Ontario	L419	—	—	L82U183000409	L82U183000409	1
+	Woodstock - Ontario	L460	—	—	L82U693000309	L82U693000309	1
+	Woodstock - Ontario	L492	—	—	L82U4A3000040	L82U6A3000041	2
+	Woodstock - Ontario (ref. L388)	L209	—	—	L82U153000230	L82U153000230	1
+	York Regional Transit - Ontario	L562	1080	1082	S92U2A3000420	S92U6A3000422	3
+	York Regional Transit - Ontario	L572	1083	1094	S92U3A3000569	S92U2A3000580	12

**WARNING**

Follow your internal safety procedures.

PROCEDURE

1.1. Raise the vehicle.

**CAUTION**

For more information on the raising and lowering of the vehicle, refer to section 18: HOISTING AND TOWING of the Nova LFS maintenance manual. Respect your current internal safety procedures. Use the proper hoisting equipment for your safety.

1.2. Remove the front axle.

**CAUTION**

For more information on the removal of the ZF-85A front axle, refer to section 04: ZF FRONT AXLE of the Nova LFS maintenance manual. Respect your current internal safety procedures. Use the proper hoisting equipment for your safety.

1.3. Follow the disassembly and assembly instructions provided in the ZF REPAIR MANUAL - WHEEL HEAD RL-85, in particular:

- page WB-02-03 (special tools),
- pages 1.6 - 1.7 (disassembly - control arm), and
- pages 1.9 -1.21 (assembly - control arm),

in order to remove the seal rings and axial roller bearing, and replace them with the new roller bearing (N8900105) and upper seal ring (N8884433). See Figures 1 and 2. ❖

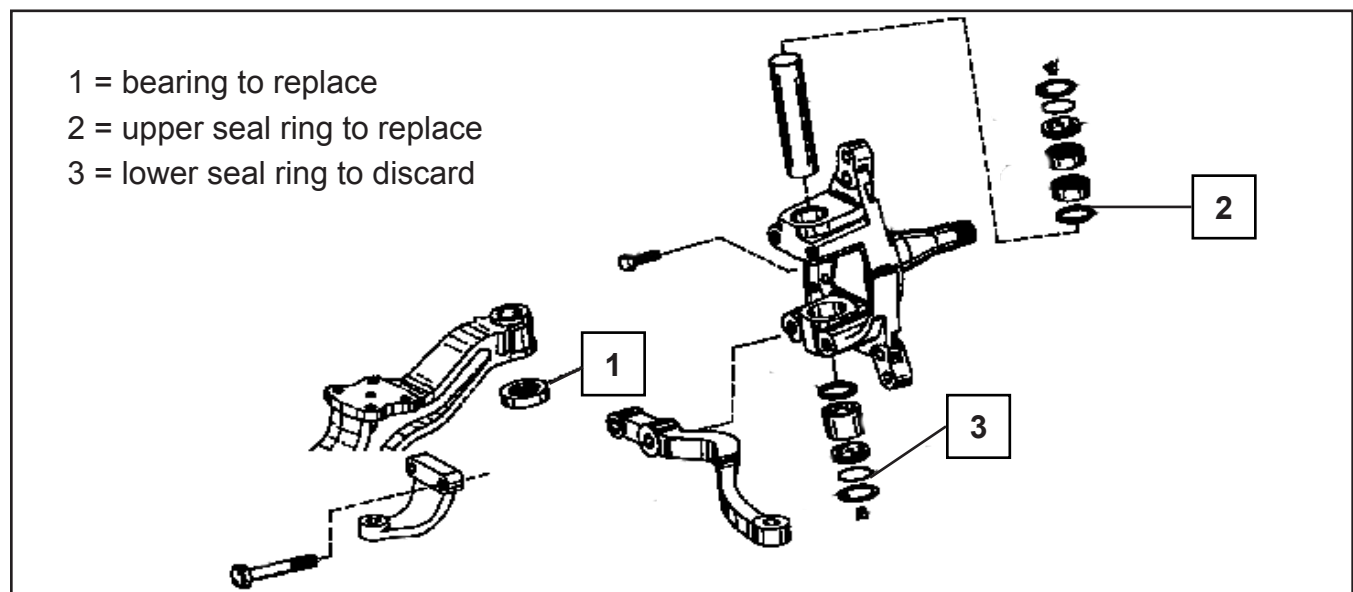
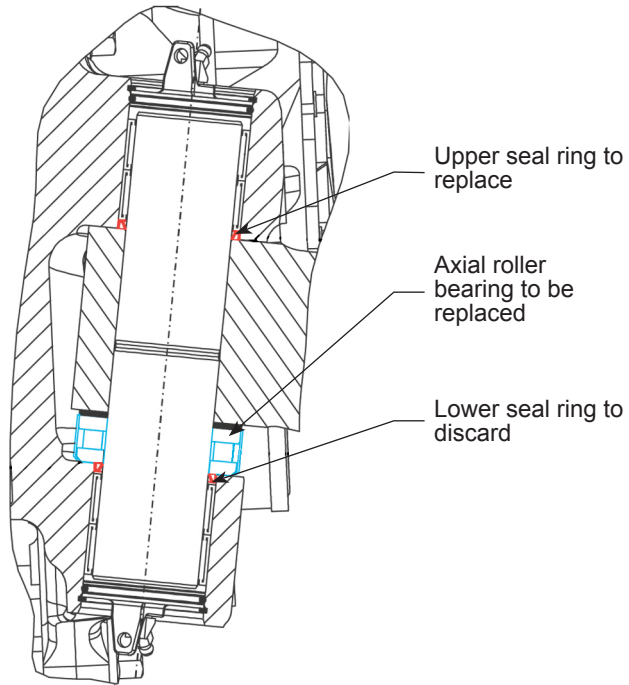


Figure 1 - Spindle Exploded View (Typical for Left and Right Side)

CURRENT WHEEL HEAD ASSEMBLY:



IMPROVED WHEEL HEAD ASSEMBLY:

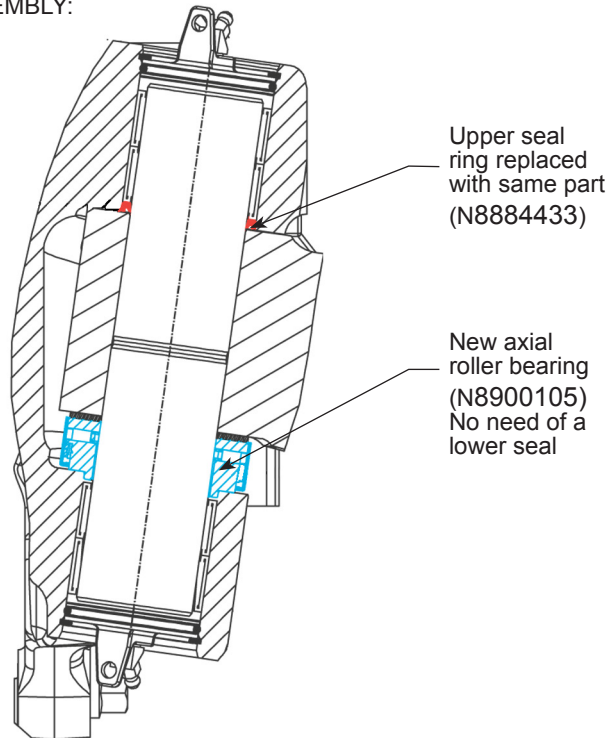


Figure 2 - Wheel Head Assembly Modifications