	GROUP <b>Service Campaign</b>	MODEL <b>2014MY Soul (PS)</b>
	NUMBER <b>SC144</b>	DATE <b>March 2017</b>
<b>VOLUNTARY SERVICE CAMPAIGN</b>		
<b>SUBJECT:                   DRIVESHAFT HUB NUT (LH/RH)                                   REPLACEMENT (SC144)</b>		

This bulletin provides information on some 2014MY Soul (PS) vehicles, produced from July 21, 2013 through May 26, 2014, which may exhibit loosening of the driveshaft hub nut while driving. A loose hub nut can damage the axle bearing, eventually resulting in bearing noise and wheel vibration while driving. To correct this concern, follow the procedure outlined in this bulletin to replace both left and right front axle driveshaft hub nuts. Before conducting the procedure, verify that the vehicle is included in the list of affected VINs.



**\* NOTICE**

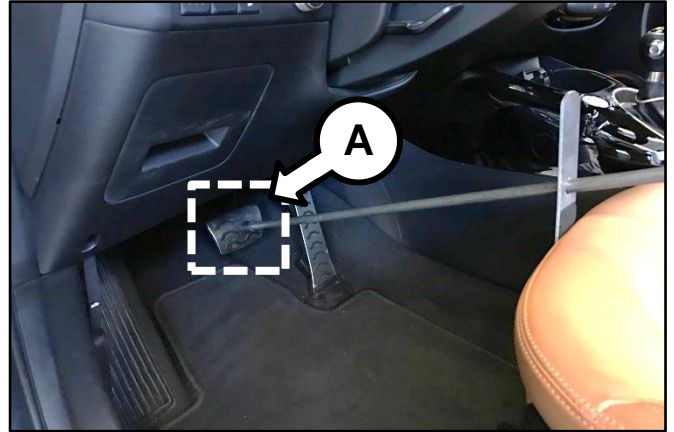
To assure complete customer satisfaction, always remember to refer to WebDCS Warranty Coverage (validation) Inquiry Screen (Service → Warranty Coverage → Warranty Coverage Inquiry) for a list of any additional campaigns that may need to be performed on the vehicle before returning it to the customer.

**File Under: <Service Campaign>**

- Circulate To:**     General Manager     Service Manager     Parts Manager  
 Service Advisors     Technicians     Body Shop Manager     Fleet Repair

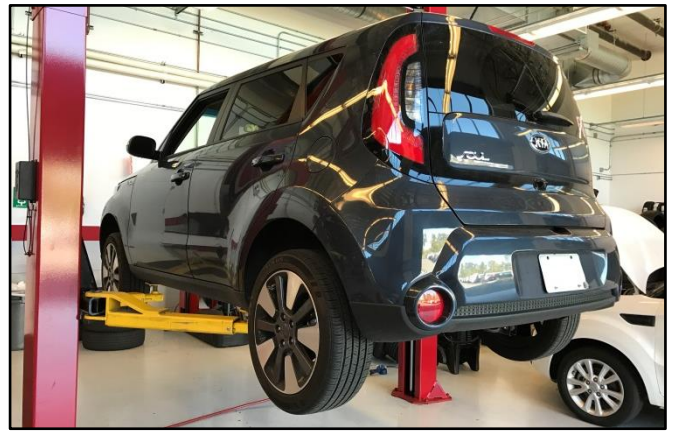
**Service Procedure:**

1. Firmly depress the brake pedal (A) with a brake pedal depressor.



2. Carefully raise the vehicle on a lift and remove both front wheels.

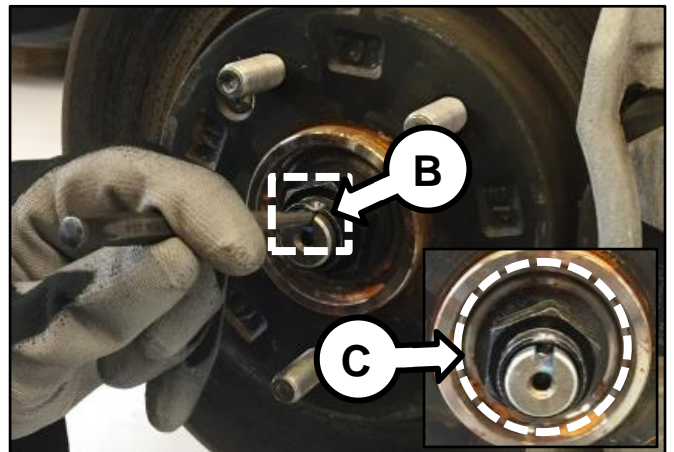
**Tightening torque: 65.1-79.6 lb·ft  
(9.0-11.0 kgf·m, 88.3-107.9 Nm)**



3. Using a chisel or other similar tool and hammer, completely release both front left and right driveshaft hub nut stakings (B) then remove and discard the driveshaft hub nuts (C).

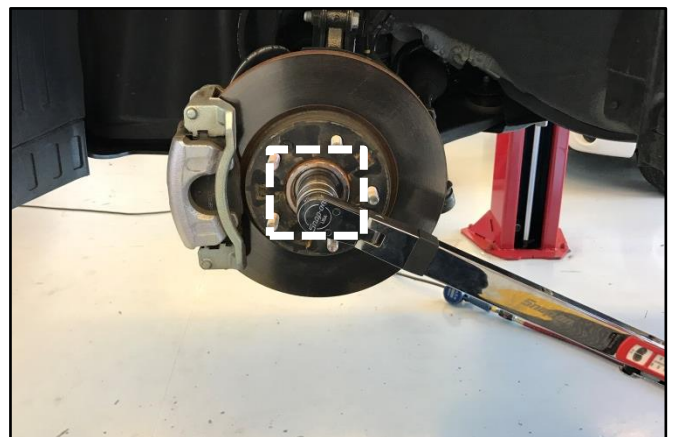
**\* NOTICE**

**Make sure the driveshaft threads are cleaned and free of debris before proceeding to the next step.**



4. Install the new driveshaft hub nuts and torque to specifications.

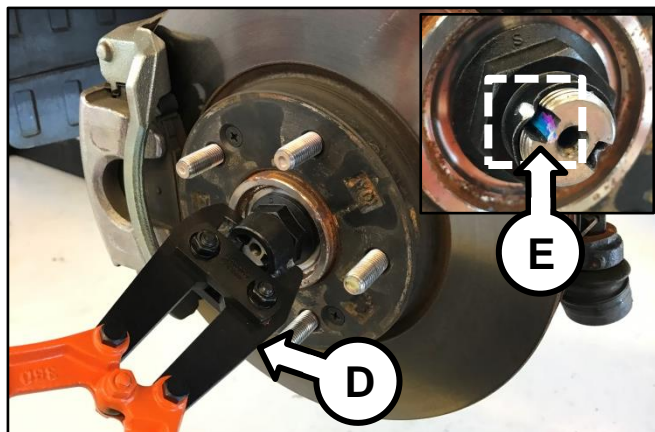
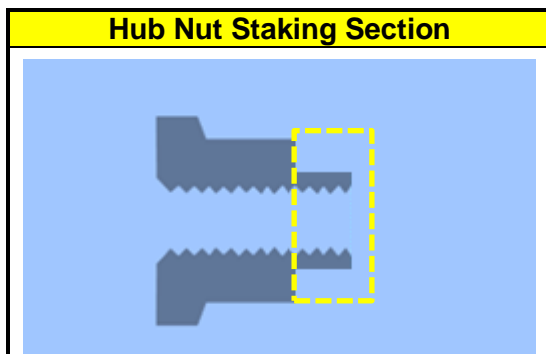
**Tightening torque: 202.5-217.0 lb·ft  
(28.0-30.0kgf.m, 274.6-294.2 Nm)**



SUBJECT:

## DRIVESHAFT HUB NUT (LH/RH) REPLACEMENT (SC144)

- Using the Hub Nut Stake Tool (1K495 B2100QQK) (D), stake the driveshaft hub nuts. Be sure to stake the nuts into the driveshaft keyway (E) to ensure proper staking and to prevent the driveshaft hub nuts from coming loose.



- Reinstall the front wheels and torque the wheel lug nuts to specifications.

**Tightening torque: 65.1-79.6 lb·ft  
(9.0-11.0 kgf·m, 88.3-107.9 Nm)**

**WARNING**

Always replace with new parts to maintain the proper locking feature of the design. Failing to do so may result in unintended loosening and/or loss of the fasteners, which in turn could lead to the loss of an assembly's integrity.

Always use the appropriate tools (e.g., torque wrench) and follow the tightening specifications for the fastener.

Refer to TSB GEN085 for additional information.

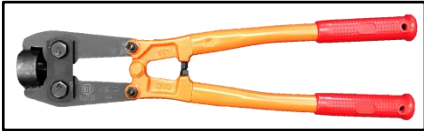
SUBJECT:

## DRIVESHAFT HUB NUT (LH/RH) REPLACEMENT (SC144)


AFFECTED VEHICLE RANGE:

Model	Production Date Range
Soul (PS)	July 21, 2013 to May 26, 2014

REQUIRED TOOL:

Tool Name	Tool Number	Figure	Comments
Hub Nut Stake Tool	1K495 B2100QQK		Auto-shipped to Dealers. For replacements, contact Snap-On Business Solutions at (888) 542-1011

REQUIRED PART:

Part Name	Part Number	Figure	Remarks
Nut – Castle (Driveshaft Hub Nut)	49551 3X000QQK		Improved driveshaft hub nut collar is thicker and threaded at the staking section

WARRANTY INFORMATION:

N CODE: N99 C CODE: C99

Claim Type	Causal P/N	Qty.	Repair Description	Labor Op Code	Op Time	Replacement P/N	Qty.
R	49551 3X000	0	(SC144) Driveshaft Hub Nut (LH/RH) Replacement	160088R0	0.4 M/H	49551 3X000QQK	2

**\* NOTICE**

VIN inquiry data for this repair is provided for tracking purposes only. Kia retailers should reference SC144 when accessing the WebDCS system.