	GROUP SST	MODEL 2017MY~ Various Models
	NUMBER 043 (Rev 2, 04/10/2017)	DATE December 2015
TECHNICAL SERVICE BULLETIN		
SUBJECT: R1234yf REFRIGERANT EQUIPMENT		

★ NOTICE

This bulletin has been revised to include additional information. New/revised sections of this bulletin are indicated by a black bar in the margin area.

This bulletin provides information relating to the introduction of R1234yf recovery, recycling, and recharging equipment. This equipment is designed to meet SAE J2843 requirements for servicing vehicles containing R1234yf refrigerant.

Beginning with the 2017MY Sportage (QL), a new refrigerant is introduced as detailed in TSB CLI029, requiring specialized recovery, recycle, and recharge equipment.

2017MY~ Models with R1234yf
Cadenza (YG)
Optima (JFa)
Optima Hybrid (JF HEV)
Optima Plug-in Hybrid (JF PHEV)
Soul (PS)
Sportage (QL)



The Mahle ACX 1299 has been approved as essential equipment and is now required for all Kia dealerships to perform the recovery, recycling, recharging of R1234yf refrigerant on Kia vehicles. The Mahle ACX 1299 provides ease of use and enhanced diagnostic capabilities currently not available on competitor's equipment. The use of the Mahle ACX 1299 will be required for warranty reimbursement for claims associated with the repair of vehicles containing R1234yf refrigerant.

The ACX1299 has the ability to connect to a mobile device to keep the technician in touch with the AC service even while working on another vehicle. The app is available for iOS and Android. Below are guidelines for downloading and using the app.

1. Open your App Store / Play Store on your mobile device
2. Search for "Mahle"
3. Find the "Kia Smart ACX" and install on your device

Using the Kia Smart ACX App:

1. The ACX 1299 will display a QR code after pressing the "Start AC Service" button and then the "Connect Device" button
2. Launch the app on your mobile device and press "Connect with Equipment" to scan QR code

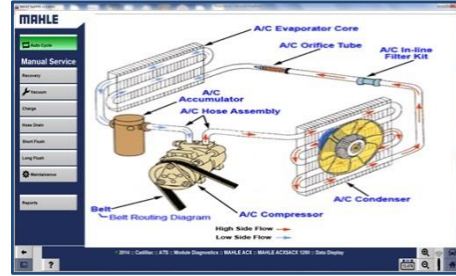
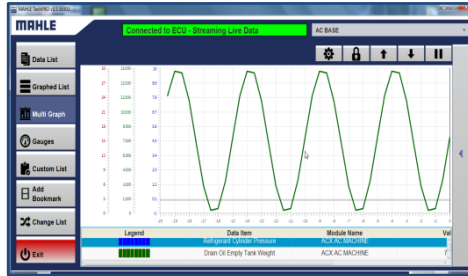


File Under: <Special Service Tool>

Circulate To: ☒ General Manager ☒ Service Manager ☒ Parts Manager
☒ Service Advisors ☒ Technicians ☒ Body Shop Manager ☒ Fleet Repair

Vehicle Diagnostics

- Single screen home page on the Mahle unit shows all aspects for automatic A/C service mode
- Embedded Diagnostics adds more capability in performing complete A/C service
- On-demand system diagrams, service information and tutorials can be viewed during any step of the process



- Wireless Vehicle Communication Interface (VCI) captures VIN and enables diagnostic capabilities



R1234yf Electronic Leak Detector with UV Light

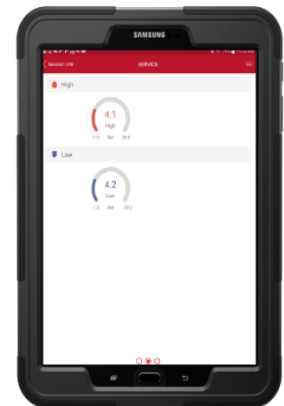
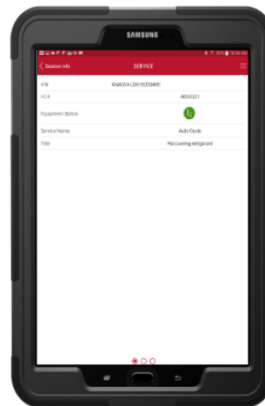
- Features a long life and robust electrolyte sensor that is designed to detect HFO refrigerants, such as R1234yf.
- The digital leak indicator provides precise pinpointing of the leak source.
- The use of an electronic leak detector during the R1234yf recharging procedure is a SAE J2843 requirement

Included with Mahle ACX 1299 equipment



Mobile Assist Application

- Remote access with Smartphones & Tablets
- Available for Android and iOS
- KDS tablet compatible
- Mobile Assist App can be used to monitor the Mahle ACX 1299 wirelessly
- No need to keep walking up to the AC Equipment



SUBJECT:

R1234YF REFRIGERANT EQUIPMENT

Equipment Updates

Ongoing software updates for:

- New features
- New vehicle specifications
- Software enhancements
- Automatic updates with minimum technician interaction



The Mahle ACX 1299 has been approved as essential equipment for all Kia dealerships to perform the recovery, recycling, recharging of R1234yf refrigerant.

The Mahle ACX 1299 features and benefits includes:

Category	Features	Benefits
Ease of Use	<ul style="list-style-type: none"> • Captures VIN via Bluetooth VCI • Automatically clears refrigerant from couplers before disconnect • Vehicle service specification available in cloud storage • Produces Kia specific warranty codes • Print via on-board thermal printer or Wi-Fi to system printer 	<ul style="list-style-type: none"> • Increases technician efficiency • Eliminates refrigerant lost during coupler disconnect. Provides cost savings • Increases technician efficiency • Usable for processing claims • Increases efficiency, customer friendly printout
Vehicle Diagnostics	<ul style="list-style-type: none"> • 7" touch screen to display service diagnostic information • Enhanced diagnostics graphically shows data over time for leak detection • Built in support for training videos and viewing service information • Onboard gauge based diagnostics • Integrated leak detection diagnosis utilizing electronic detector 	<ul style="list-style-type: none"> • Increases technician readability • Enhanced diagnostic capability aids FRFT • Onboard training to aid FRFT • Enhanced diagnostic capability aids FRFT • Enhanced diagnostic capability aids FRFT
Mobile Assist Application	<ul style="list-style-type: none"> • Companion mobile application available for smart phone or tablet • Available on iOS and Android platforms • Remotely monitor automatic A/C service progress • Auto notification of input required by technician 	<ul style="list-style-type: none"> • Increases technician efficiency • Multiple device friendly • Increases technician efficiency • Increases technician efficiency
Equipment Serviceability	<ul style="list-style-type: none"> • Automatic software updates via Wi-Fi • Modular construction for easy field repair / maintenance • Product call center can remote access unit for assistance with troubleshooting • Serviceable by dealer technicians • 3 year warranty 	<ul style="list-style-type: none"> • Increases technician efficiency aids FRFT • Reduces equipment down time • Reduces equipment down time • Reduces equipment down time • Greater than standard 2 year warranty

Dealership Requirements:

To assure quality vehicle repair and diagnosis for vehicles equipped with R1234yf refrigerant, Kia dealerships are required to have a minimum of one (1) Mahle ACX1299 A/C Recovery, Recycling, and Recharging Equipment.

Mahle ACX 1299 began arriving at Kia dealerships the second half of January 2016.