	GROUP <b>BOD</b>	MODEL <b>2014-2015MY Soul (PS)</b>
	NUMBER <b>133</b>	DATE <b>March 2017</b>
<b>TECHNICAL SERVICE BULLETIN</b>		
<b>SUBJECT: INSTRUMENT PANEL PAD NOISE REPAIR</b>		

This bulletin provides information relating to some 2014-2015MY Soul (PS) vehicles, produced from July 21, 2013 to February 14, 2015, which may experience a rattle sound from the upper area of the instrument panel during turns or while driving over bumps or rough roads. This sound may be more prevalent during cold temperatures. Follow the procedure outlined in this bulletin to correct the concern.



Instrument Panel

File Under: <Body>

---

Circulate To:     General Manager     Service Manager     Parts Manager  
 Service Advisors     Technicians     Body Shop Manager     Fleet Repair

**Service Procedure:**

1. Test drive the vehicle to verify that there is a squeaking or similar sound emitting from the upper instrument panel area.

**\* NOTICE**

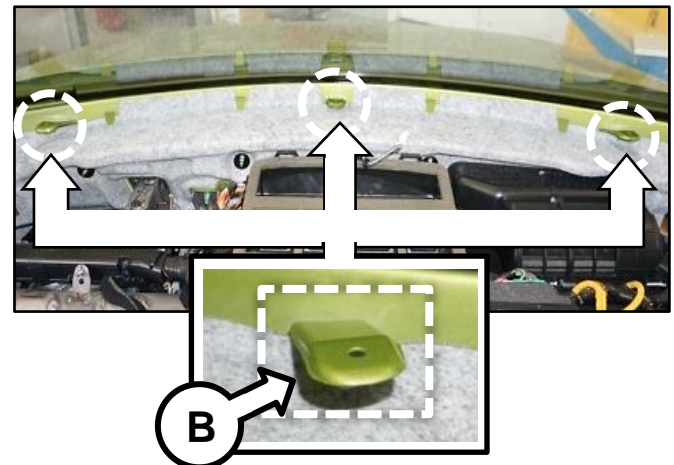
**This rattle sound may be more prevalent in cold temperatures, during turns or driving over bumps or rough roads.**



2. Record the customer's radio presets before disconnecting the negative battery terminal in the next step of this procedure.
3. Remove the instrument panel (A) by referring to the "Body (Interior and Exterior) → Crash Pad → Main Crash Pad Assembly → Repair procedures" chapter in the applicable Shop Manual on KGIS.



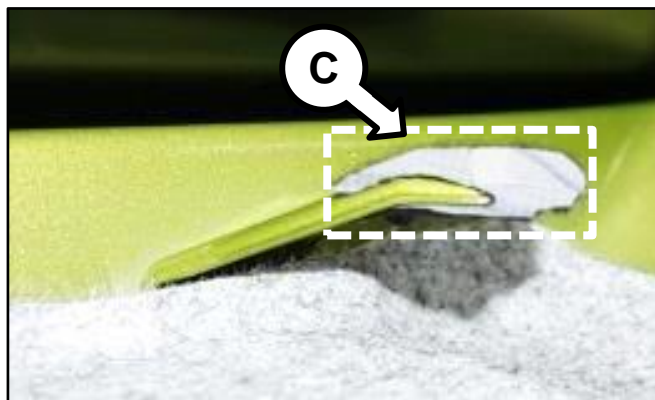
4. Locate the three (3) contact tabs (B).



SUBJECT:

## INSTRUMENT PANEL PAD NOISE REPAIR

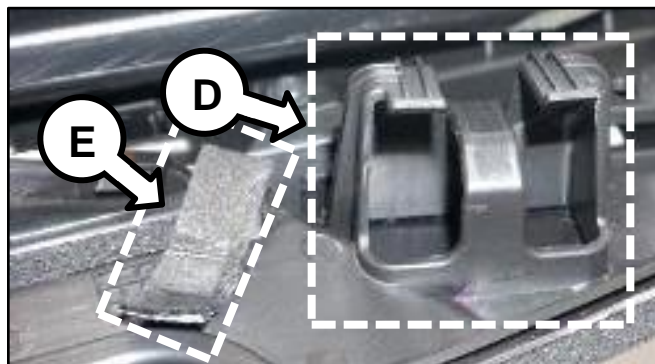
5. Clean the three (3) contact tabs (C) with an alcohol wipe then apply an anti-noise pad (no 1.) to each of the three (3) contact tabs (C) as shown. Wrap the pad around the front to prevent lifting during instrument panel reinstallation.



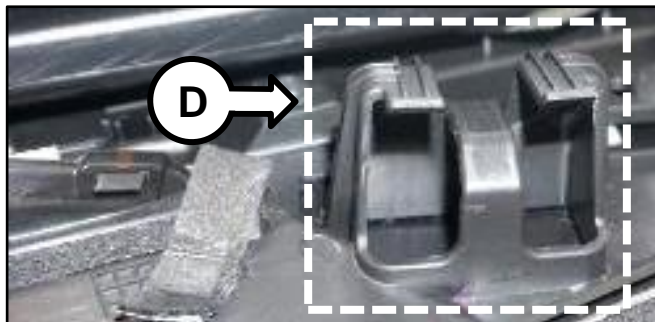
6. Inspect the three (3) panel retaining tabs (D) located under the removed instrument panel and discard the old anti-noise pads (E).

**\* NOTICE**

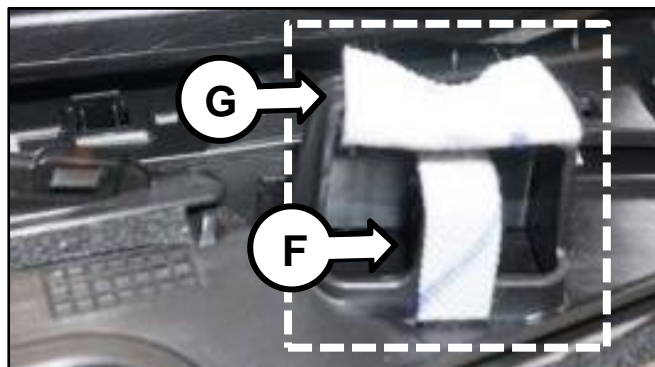
Some pads may have come loose during removal of the instrument panel, as shown (E).



7. Clean the three (3) panel retaining tabs (D) with an alcohol wipe.



8. Apply a new anti-noise pad (no. 1) (F) at the inner surface of the three (3) panel retaining tabs. Ensure that the inner surfaces are completely covered with the anti-noise pads, as shown (F).



9. Apply a new anti-noise pad (no. 2) (G) at the three (3) panel retaining tabs. Ensure that the tabs are completely wrapped in the anti-noise pads, as shown (G).

10. Reinstall all removed components in the reverse order of removal.
11. Reprogram the customer's radio presets.
12. Test drive the vehicle to ensure the rattle concern has been corrected.


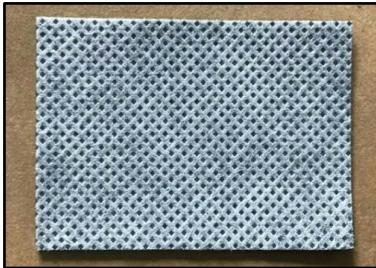
SUBJECT:

## INSTRUMENT PANEL PAD NOISE REPAIR

AFFECTED VEHICLE RANGE:

Model	Production Date Range
Soul (PS)	July 21, 2013 to February 14, 2015

REQUIRED PART:

Part Name	Part Number	Qty.	Figure
Pad – Anti-Noise No.1	97383 B2000FFF	6	
Pad – Anti-Noise No. 2	97384 B2000FFF	3	

WARRANTY INFORMATION:

Claim Type	Causal P/N	Qty.	N Code	C Code	Repair Description	Labor Op Code	Op Time	Replacement P/N	Qty.
W	97383 B2000F FF	0	Q55	ZZ1	Instrument Panel Pad Repair	84710F09	2.7 M/H	97383 B2000FFF	6
								97384 B2000FFF	3