



GROUP  
FUE

MODEL  
2014-2015MY  
Sorento (XMa)

NUMBER  
033

DATE  
January 2017

## TECHNICAL SERVICE BULLETIN

**SUBJECT:** FILL LEVEL LIMIT VALVE REPLACEMENT

This bulletin provides information related to the fill level limit valve (FLLV) replacement on some Sorento (XMa) vehicles, produced from December 17, 2012 to December 11, 2014, which may exhibit a Malfunction Indicator Light (MIL) illuminated in the Electronic Control Module (ECM) with system-related DTC: P0455. To correct this concern, follow the procedure outlined in this bulletin. Replacement of fuel tank is not necessary.

### **P0455: Evaporative Emission System-Leak Detected (Large Leak)**



Fill Level Limit Valve

File Under: <Fuel>

Circulate To:  General Manager  Service Manager  Parts Manager  
 Service Advisors  Technicians  Body Shop Manager  Fleet Repair

**SUBJECT: FILL LEVEL LIMIT VALVE REPLACEMENT**

**! WARNING**

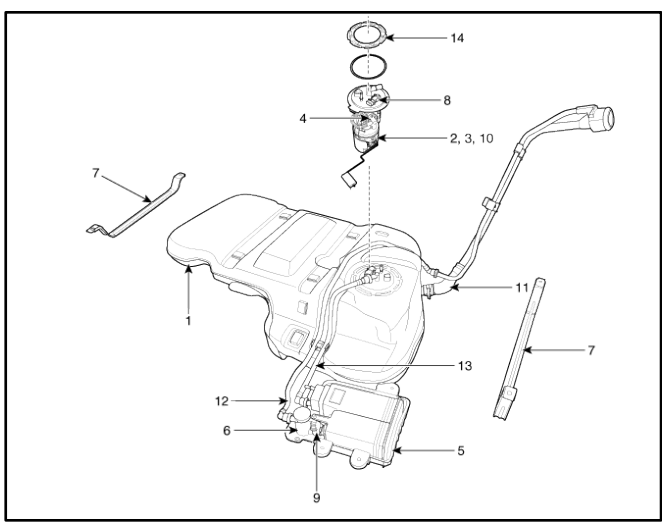
Fuel vapors are flammable. Death or serious injury can result if they are ignited. Make sure there are no open flames or smoking in the area of the repair. Adequate ventilation is necessary to prevent a build-up of fumes which could ignite, causing fire or explosion.

**Service Procedure:**

1. Remove the fuel pump assembly by referring to “Engine Control / Fuel System → Fuel Delivery System → Fuel Pump → Repair Procedures” chapter in the applicable Workshop Manual.

**\* NOTICE**

Optimum fuel level to perform this repair is approximately half tank or less.



2. Carefully reach through the opening (A) of the fuel tank to locate the FLLV (B).

The green-colored FLLV shown is for demonstration purposes only. Color of removed FLLV may vary.

**! WARNING**

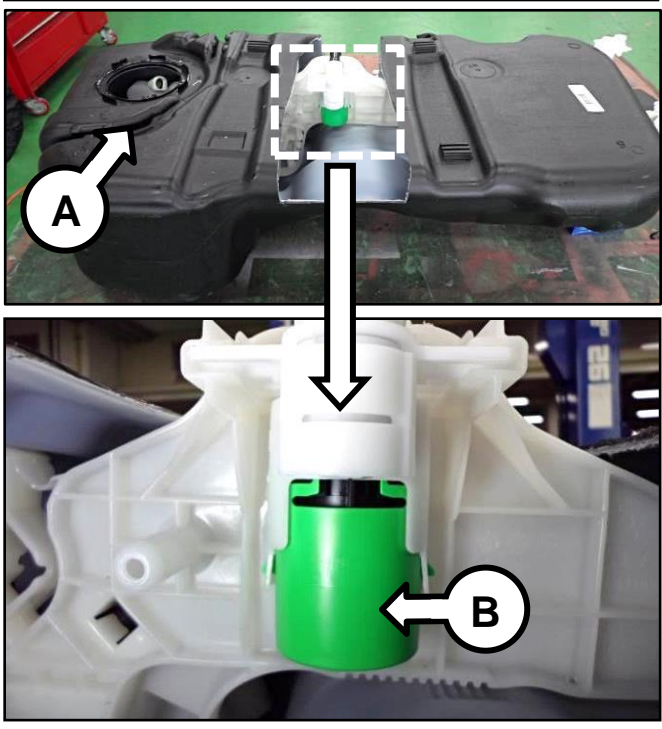
Use protection against the sharp edge of the opening (A) to prevent personal injury.

**\* NOTICE**

[Click here to watch a video tutorial of the FLLV removal and installation.](#)

**\* NOTICE**

The fuel tank shown was removed from the vehicle and cut open to expose the FLLV for demonstration purposes only.



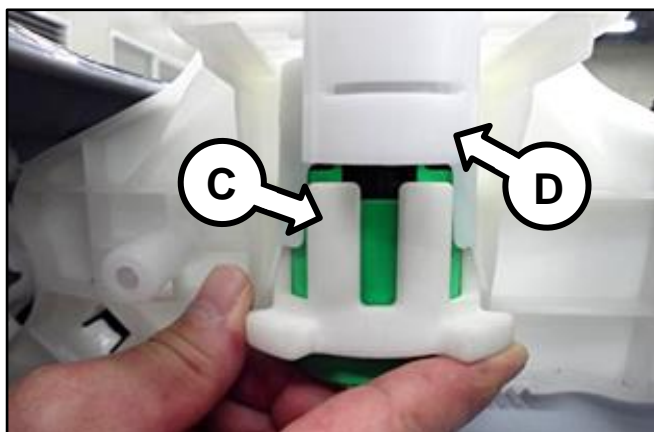
## SUBJECT:

## FILL LEVEL LIMIT VALVE REPLACEMENT

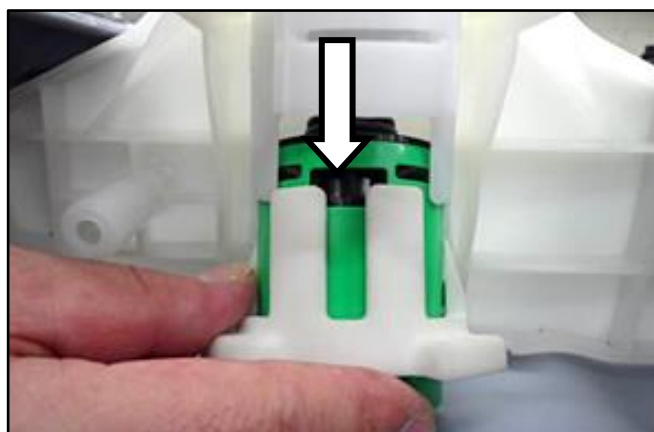
- Align the SST 07300 10200 (C) with the FLLV retainer (D) and attach it to the valve until a snap is heard or felt. Slightly shift the tool side to side to ensure that it is secured.

**\* NOTICE**

When attaching the SST 07300 10200 to the FLLV, be sure to properly align the SST under the locking clip (E) on both sides as shown.



- Once the SST 07300 10200 is secured, pull down on the FLLV and SST to remove.



- Insert the new FLLV with the guide pin (F) facing towards the front of the vehicle.

**\* NOTICE**

Make sure a snap is heard or felt to ensure proper installation of the FLLV. Failure to do so will result in a repeat repair.




- Reinstall all removed components in the reverse order of removal.


**SUBJECT:****FILL LEVEL LIMIT VALVE REPLACEMENT****AFFECTED VEHICLE RANGE:**

<b>Model</b>	<b>Production Date Range</b>
Sorento (XMa)	December 17, 2012 to December 11, 2014

**REQUIRED TOOL:**

<b>Tool Name</b>	<b>Tool Number</b>	<b>Figure</b>
FLLV Remover	SST 07300 10200	

**REQUIRED PART:**

<b>Part Name</b>	<b>Part Number</b>	<b>Figure</b>
Fill Level Limit Valve	31195 4Z000FFF	

**WARRANTY INFORMATION:**

<b>Claim Type</b>	<b>Causal P/N</b>	<b>Qty.</b>	<b>N Code</b>	<b>C Code</b>	<b>Repair Description</b>	<b>Labor Op Code</b>	<b>Op Time</b>	<b>Replacement P/N</b>	<b>Qty.</b>
W	31195 4Z000	0	B18	ZZ1	Fill Limit Level Valve Replacement	31195F01	1.0 M/H	31195 4Z000FFF	1