	GROUP CHA	MODEL 2017MY Sorento (UMa)
	NUMBER 076	DATE January 2017
TECHNICAL SERVICE BULLETIN		
SUBJECT: SERVICE ACTION: HYDRAULIC ELECTRONIC CONTROL UNIT LOGIC IMPROVEMENT (SA269)		

This bulletin provides the procedure to improve the logic of the Hydraulic Electronic Control Unit (HECU) on some Smart Cruise Control equipped 2017MY Sorento (UMa) vehicles, produced from April 5, 2016 to December 22, 2016, which may experience a deactivation of the Smart Cruise Control, followed by a malfunction indicator lamp and diagnostic trouble code (DTC) C238001 stored. To correct this concern, apply the improved logic to the HECU by using the KDS download, as described in this bulletin. For confirmation that the latest reflash has been applied to a vehicle you are working on, verify the ROM ID using the table on page 2 of this bulletin. Before conducting the procedure, verify that the vehicle is included in the list of affected VINs.



Kia Diagnostic System (KDS)

*** NOTICE**

A Service Action is a repair program without customer notification that is performed during the warranty period. Any dealer requesting to perform this repair outside the warranty period will require DPSM approval.

Repair status for a VIN is provided on WebDCS (Service → Warranty Coverage → Warranty Coverage Inquiry → Campaign Information). Not completed Recall / Service Action reports are available on WebDCS (Consumer Affairs → Not Completed Recall → Recall VIN → Select Report), which includes a list of affected vehicles.

This issue number is SA269.

File Under: <Chassis>

- Circulate To:** General Manager Service Manager Parts Manager
 Service Advisors Technicians Body Shop Manager Fleet Repair

SUBJECT:

HYDRAULIC ELECTRONIC CONTROL UNIT LOGIC IMPROVEMENT (SA269)

HECU Upgrade Procedure:

To correct this condition, the HECU should be reprogrammed using the KDS download, as described in this bulletin.

UPGRADE EVENT NAME
312.UMA ABS/ESC MIL ON DTC (C238001) LOGIC IMPROVEMENT

★ NOTICE

- A fully charged battery is necessary before HECU upgrade can take place. It is recommended that the Midtronics GR8-1299 system be used in ECM mode during charging. DO NOT connect any other battery charger to the vehicle during HECU upgrade.
- All HECU upgrades must be done with the ignition key in the 'ON' position.
- Be careful not to disconnect the VCI-II connected to the vehicle during the HECU upgrade procedure.
- DO NOT start the engine during HECU upgrade.
- DO NOT turn the ignition key 'OFF' or interrupt the power supply during HECU upgrade.
- When the HECU upgrade is completed, turn the ignition 'OFF' and wait 10 seconds before starting the engine.
- ONLY use approved HECU upgrade software designated for the correct model, year.

ROM ID INFORMATION TABLES :

Upgrade Event 312 (UMa)

MODEL	SYSTEM	ECU P/NO	ROM ID	
			PREVIOUS	NEW
UMA	ESC	58910-C6900	58910-C6900_1.2	58910-C6900_1.3
		58910-C6940	58910-C6940_1.2	58910-C6940_1.3

To verify the vehicle is affected, be sure to check the Calibration Identification of the vehicle's ECM ROM ID and reference the Information Table as necessary.

★ NOTICE

Prior to performing the ECU upgrade, be sure to check that the KDS is fully charged.

SUBJECT: HYDRAULIC ELECTRONIC CONTROL UNIT LOGIC IMPROVEMENT (SA269)

1. Connect the VCI-II to the OBD-II connector, located under the driver's side of the instrument panel.

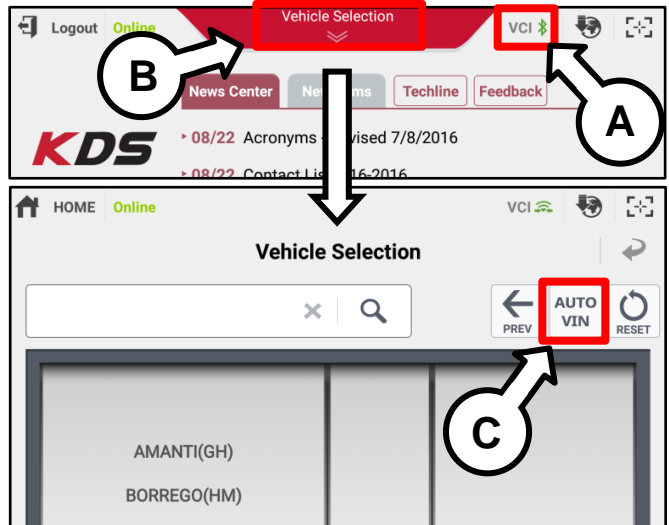
*** NOTICE**
 The ECU upgrade function on KDS is operating wirelessly. It is not necessary to perform the upgrade via USB cable.



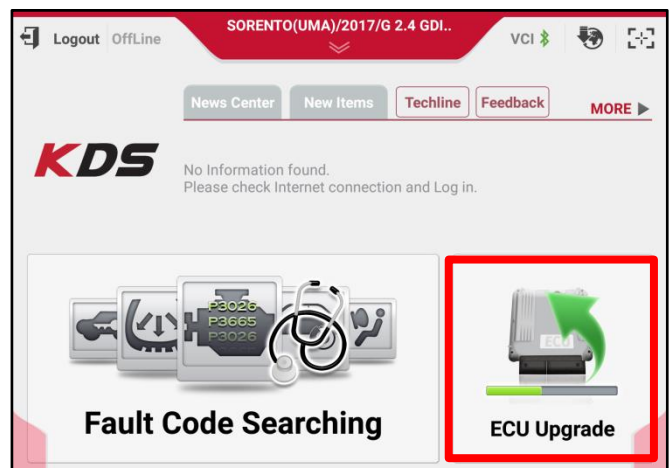
2. With the ignition ON, turn ON the KDS tablet. Select **KDS** from the home screen.



3. Confirm communication with VCI (A) and then configure the vehicle (B) using the **AUTO VIN** (C) feature.



4. Select **ECU Upgrade**.

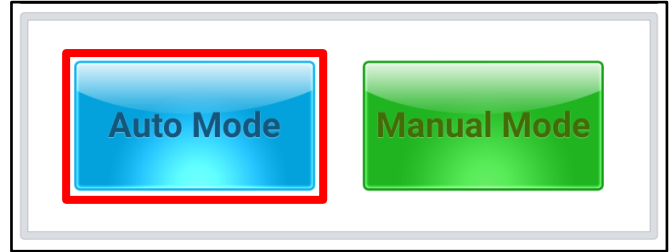


SUBJECT: HYDRAULIC ELECTRONIC CONTROL UNIT LOGIC IMPROVEMENT (SA269)

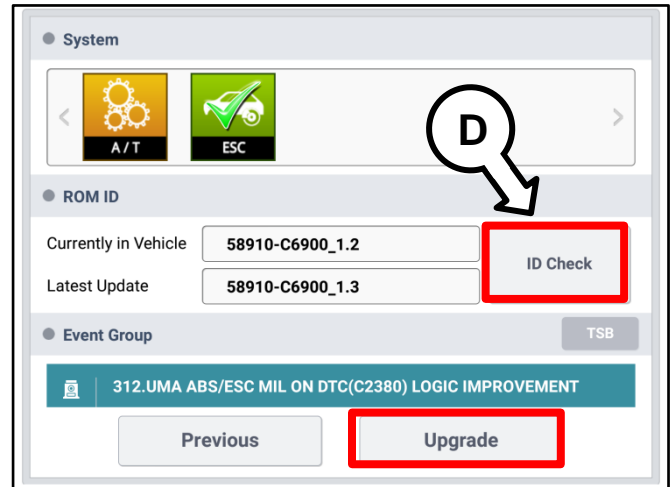
5. Select **Auto Mode**.

CAUTION

Do NOT attempt to perform a Manual Mode upgrade UNLESS Auto Mode fails. Always follow the instructions given on the KDS in either Auto or Manual mode.



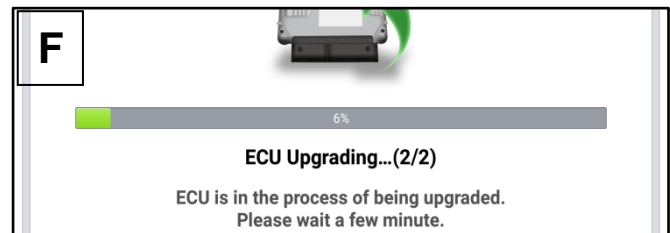
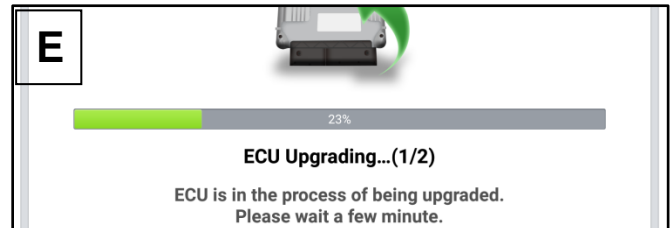
6. Select ESC under the System selection menu. Touch **ID Check** (D) and confirm that the latest update is available. Ensure upgrade event #312.UMA under Event Group is selected and select **Upgrade** to continue.



7. The ECU upgrade will begin and the progress of the upgrade will appear on the bar graph. Upgrade part (1/2) (E) will download the upgrade event to the VCI-II. Upgrade part (2/2) (F) will upgrade the ECU.

CAUTION

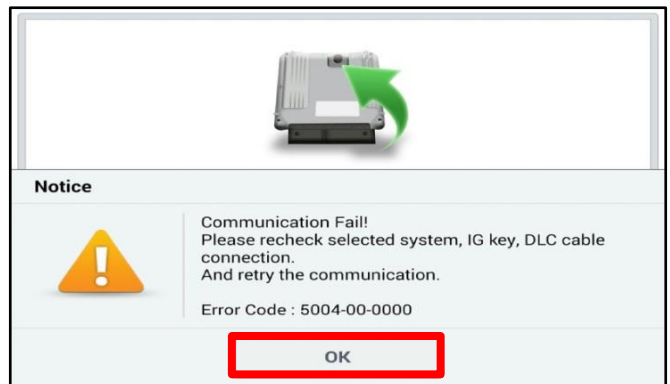
Do not touch the system buttons (like 'Back', 'Home', 'etc.') while performing ECU Upgrade.



8. If a "Communication Fail" screen appears, verify that the VCI-II and KDS are communicating properly. Touch **OK** and restart the procedure from step 4.

*** NOTICE**

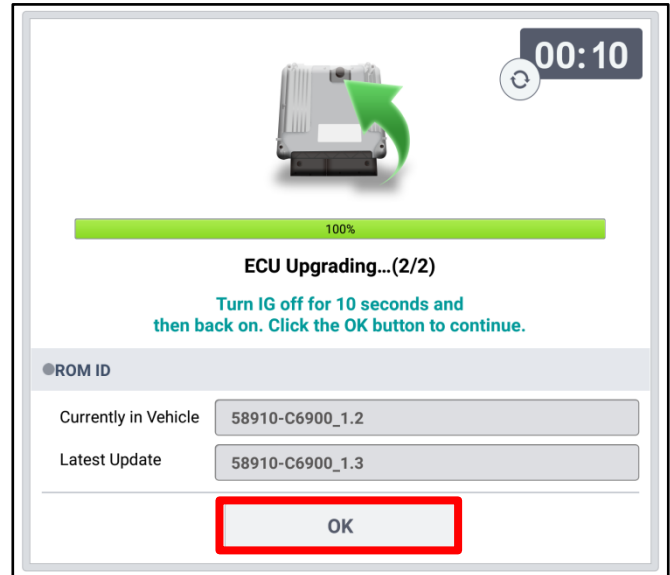
If an error notice continues to appear or if the upgrade cannot be performed, contact Techline or GIT America Help Desk.



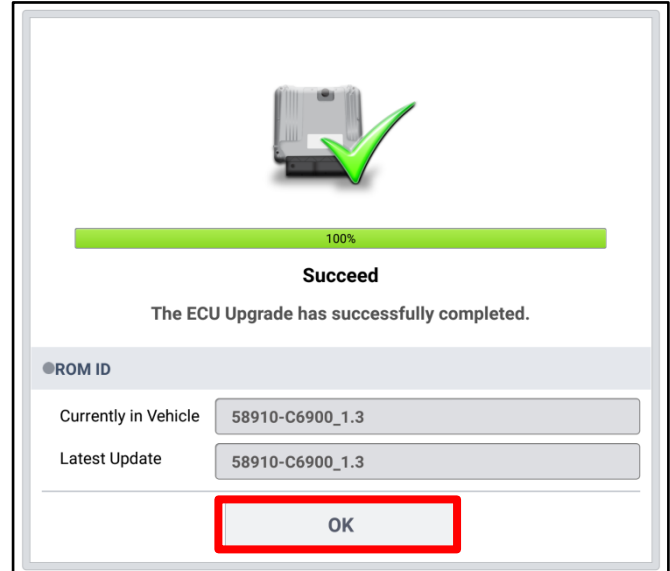
SUBJECT:

HYDRAULIC ELECTRONIC CONTROL UNIT LOGIC IMPROVEMENT (SA269)

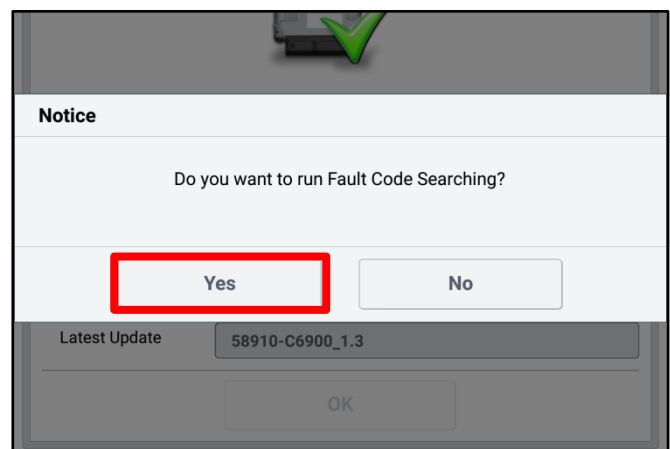
9. When instructed on the KDS, turn the ignition **OFF** for ten (10) seconds then back on. Touch **OK** to continue.



10. Once the upgrade is complete, touch **OK** to finalize the procedure.



11. When prompted, select **YES** to check for Diagnostic Trouble Codes (DTC) and erase any DTCs stored such as EPS, ESC, and TPMS that may have been set during the upgrade.



12. Start the engine to confirm proper operation of the vehicle.

SUBJECT:

HYDRAULIC ELECTRONIC CONTROL UNIT LOGIC IMPROVEMENT (SA269)

Manual Upgrade Procedure:

★ NOTICE

The manual upgrade should **ONLY** be performed if the automatic upgrade fails.

If the automatic upgrade fails, turn the ignition **OFF** for about 10 seconds then place it back in the **ON** position to reset the control unit **BEFORE** performing manual upgrade.

See applicable TSB for Manual Mode passwords.

Upgrade Event #312 (UMa)

Event #	System	Menu	Password
312	HECU	UMA ABS/ESC (SCC) : 58910-C6900	6900
		UMA ABS/ESC (SCC) : 58910-C6940	6940

1. Within the ECU Upgrade screen displayed, select **Manual Mode** and then select the **Upgrade Event #312 (UMa)** shown on the applicable TSB.
2. Select the appropriate control unit part number with reference to the ROM ID Information Table on page 2 and select **OK**.
3. Enter the appropriate password from the Manual Mode password table above and select **OK**.
4. The upgrade will begin and the progress of the upgrade will appear on the bar graph.
5. When instructed on the KDS, turn the ignition **OFF** for ten (10) seconds then back on. Touch **OK** to continue.
6. Once the upgrade is complete, touch **OK** to finalize the procedure.
7. When prompted, select **YES** to check for Diagnostic Trouble Codes (DTC) and erase any DTCs stored such as EPS, ESC, and TPMS that may have been set during the upgrade.
8. Start the engine to confirm proper operation of the vehicle.

SUBJECT:

**HYDRAULIC ELECTRONIC CONTROL UNIT
LOGIC IMPROVEMENT (SA269)**

AFFECTED VEHICLE RANGE:

Model	Production Date Range
Sorento (UMa)	April 5, 2016 to December 22, 2016

WARRANTY INFORMATION:

Claim Type	Causal P/N	Qty.	N Code	C Code	Repair Description	Labor Op Code	Op Time	Replacement P/N	Qty.
V	58910 C6900	0	N99	C99	(SA269) HECU Logic Improvement	170A01R0	0.3 M/H	N/A	0

*** NOTICE**

VIN inquiry data for this repair is provided for tracking purposes only. Kia retailers should reference SA269 when accessing the WebDCS system.