



# GENUINE MOTOR PARTS AND MOTOR ACCESSORIES BULLETIN



PAB1064

2017-03-16

## HARLEY-DAVIDSON VEHICLE LOCK AND KEY ORDERING GUIDE

### Purpose

The purpose of this bulletin is to provide the Harley-Davidson Dealer Network with reference material to identify vehicle key styles and order the proper key code format for replacement locks and keys.

Orders for keys and locks will be manufactured to the key code specified by the dealer on the parts order. These locks and keys will be built-to-order and direct shipped to you from our OEM suppliers. You will not have to send a replacement lock to a local lock shop to be re-keyed, or will you have to order and install a complete lock set to make all locks on the motorcycle match one key.

Orders for locks and keys listed in this bulletin will not be processed without a valid key code or "0" (zero) or "0000" in the comment field.

Keyed-to-match replacements are only available for the specific models and years specified in this bulletin. Orders specifying invalid key codes will be cancelled.

- If the key code or existing key is available, follow Ordering Process 1.

- If the key code or existing key is NOT available, follow Ordering Process 2.

### Questions

Please contact Technical Service with any concerns regarding application. Please direct all other questions to your Dealer Services Representative.

### Ordering Process 1 (key or key code is available):

To find key codes on keys with black plastic key covers, simply slide the key cover off the key head to expose the stamped key code.

- Option A: Enter customer's 4, 5 or 6 digit key code in the comments field as follows:
  - K=00A1
  - K=7000A
  - K=5000HD
- Option B: Enter a key code of K=0 or K=0000 for no preference and you will receive a randomly drawn key code.

h-dnet.com  
AN ONLINE BUSINESS TOOL FOR HARLEY-DAVIDSON AND BUELL DEALERS

ORDER ENTRY HOME | ADD COMMENTS PAGE

Please enter key number for key part(s).

Add comments to any detail lines and press Submit.

Line	Qty	Part	Type	Comments	Estimated Price/Unit
1	1	71441-94	RG	KEY ORDER Key Code = 00A0	\$35.88

IGN SW KIT FLAT KEY

SUBMIT

Figure 1.



**Add a Purchase Request**

Last Item: 90300118 Less Item Info

Item: 90300118 Description: INTEGRATED SECURITY & LOCKS

Qty Ordered:  Pkg. Qty:  Max. Order Qty: 1000000.00

Other Order Details

Vendor: HARLEY-DAVIDSON, INC.  Return Required

Category: HM-SECURITY & STI P.B. Status: STOCK Inv. Status: STOCK

Profit Center: 0102102 ABC Code:  Retail: 144.95

Volume Discount

Qty 1: 0.00

Last Ordered Date:

Last Received Date:

Last Sale Date:

Qty on Hand: 0.00

Committed Qty: 0.00

Total Qty On Order: 0.00

CIM Information

Figure 2.

Please check your order acknowledgement to ensure all part numbers have been sent properly. For all order management systems, please contact your software vendor for directions.

**Ordering Process 2 (key or key code is NOT available):**

If the key code is not available please use the following TALONes or H-Dnet resources. Once the key code has been identified, follow Ordering Process 1

https://www.h-dnet.com/VehicleInformation/#/vehicles

VIN: 1H01GGL17WY109927

Return to Search Search in VIN

**Vehicle Build Information**

Order Number: 0444930  
 Order Type: REGULAR ORDER  
 Model Year: 1994  
 Model Code: FXDWG  
 Model Description: DYNA WIDE GLIDE  
 Color: AQUA PEARL/SILVER 036  
 Wheel: Laced (SP)  
 Security Option: NO SECURITY SYSTEM (00300)  
 Reverse:  
 Cruise handlebar:  
 Seat:  
 Controls:

Current Dealer:  
 Current Dealer Date: 11/04/1993  
 Shipped To Dealer:  
 Ship Date: 11/04/1993  
 vehicle Assembly Date: 11/02/1993  
 3-Wheeled Vehicle Build Date:  
 Vehicle Status: SOLD  
 Destination: DOM  
 Odometer Type: MILES  
 Ignition Key: 3784  
 Second Key: 3784

Front Tire Serial #: MA4423  
 Rear Tire Serial #: M66423  
 Original Chassis Serial #: 1594301152  
 Current Chassis Serial #: 1594301152  
 Fork Serial #: L32856  
 Transmission Serial #: 94298154  
 Engine Production Date: 01/01/1994

3-Wheeled Vehicle Begin Assembly Date:  
 3-Wheeled Vehicle Ship Date:  
 Women's Engine:  
 Women's Engine Date:

**Campaign History**

**Safety Campaigns**

Number of Safety Campaigns VIN is involved in: 0

**Product Campaigns**

Some product campaigns may have expired and require customer to pay. Please see appropriate service bulletin for details on warranty coverage.

Number of Product Campaigns VIN is involved in: 0

Print Previous >

**Registrations**

**Current Owner** Registration Maintenance

Customer Name:  
 Customer Location:  
 Warranty/Transfer/Sale Date: 01/20/1997  
 Registering Dealer:  
 Purchase Date: Is HOG Member:  
 Type Of Sale: NOT ENTERED HOG Member #:

**Previous Owner(s)**

Print Previous >

**SWR Entry Information**

Date Created: Time Created: 0  
 Date Sent To H-D: Time Sent To H-D: 0  
 Processed Date: 05/16/1997 Processed Time: 0

Figure 3. H-Dnet users: e.g. (h-dnet.com/VehicleInformation)

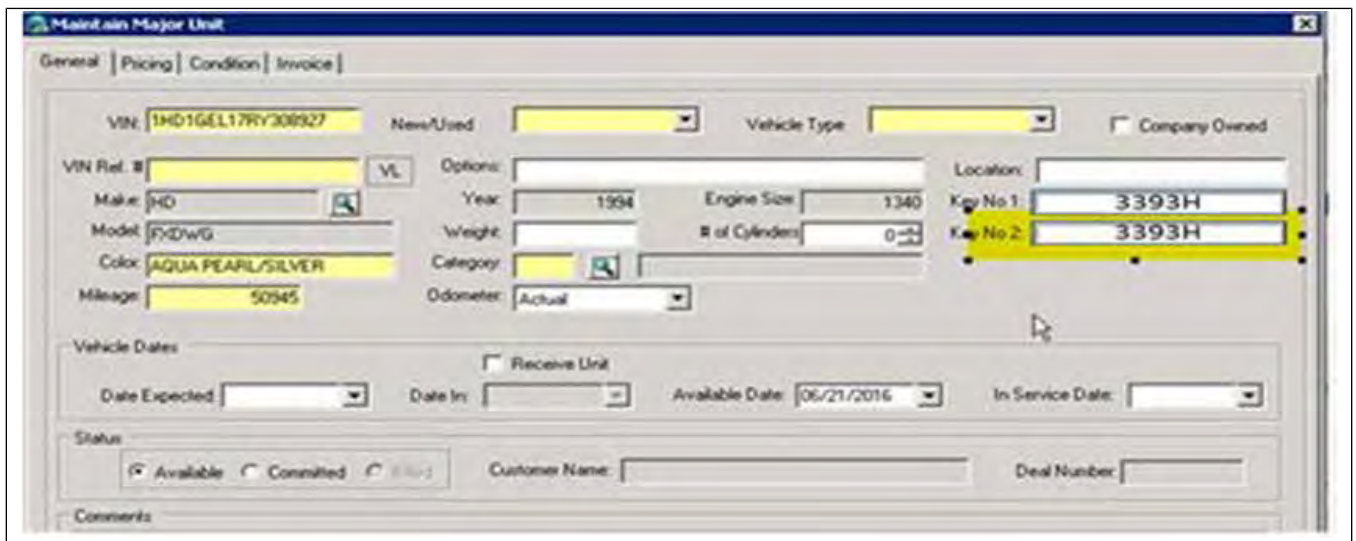


Figure 4. TALONes users only: (Maintain Major Unit/VIN Validation)

## DELIVERY

Special Ship (SS) orders with a priority shipping method (UPS1, UPS2, UPSS (Saturday) and IPCS for international) will take priority and may ship within the next business day. All Regular (RG) orders will ship within the lead time designated by the H-Dnet.com part availability tool.

## RETURNS

Due to the keyed to match manufacturing process the part numbers listed in the bulletin are non-returnable.

## REFERENCE GUIDE

### KEYS - FLAT STYLE

## ACTIONS

Please keep this bulletin as a reference in your parts department. Your printed parts books may not reflect the new keyed-to-match individual replacement lock part number. See H-Dnet.com for the latest revision. Please verify that key code is entered with the proper format.

## Questions

Please contact Technical Service with any concerns regarding application. Please direct all other questions to your Dealer Services Representative.

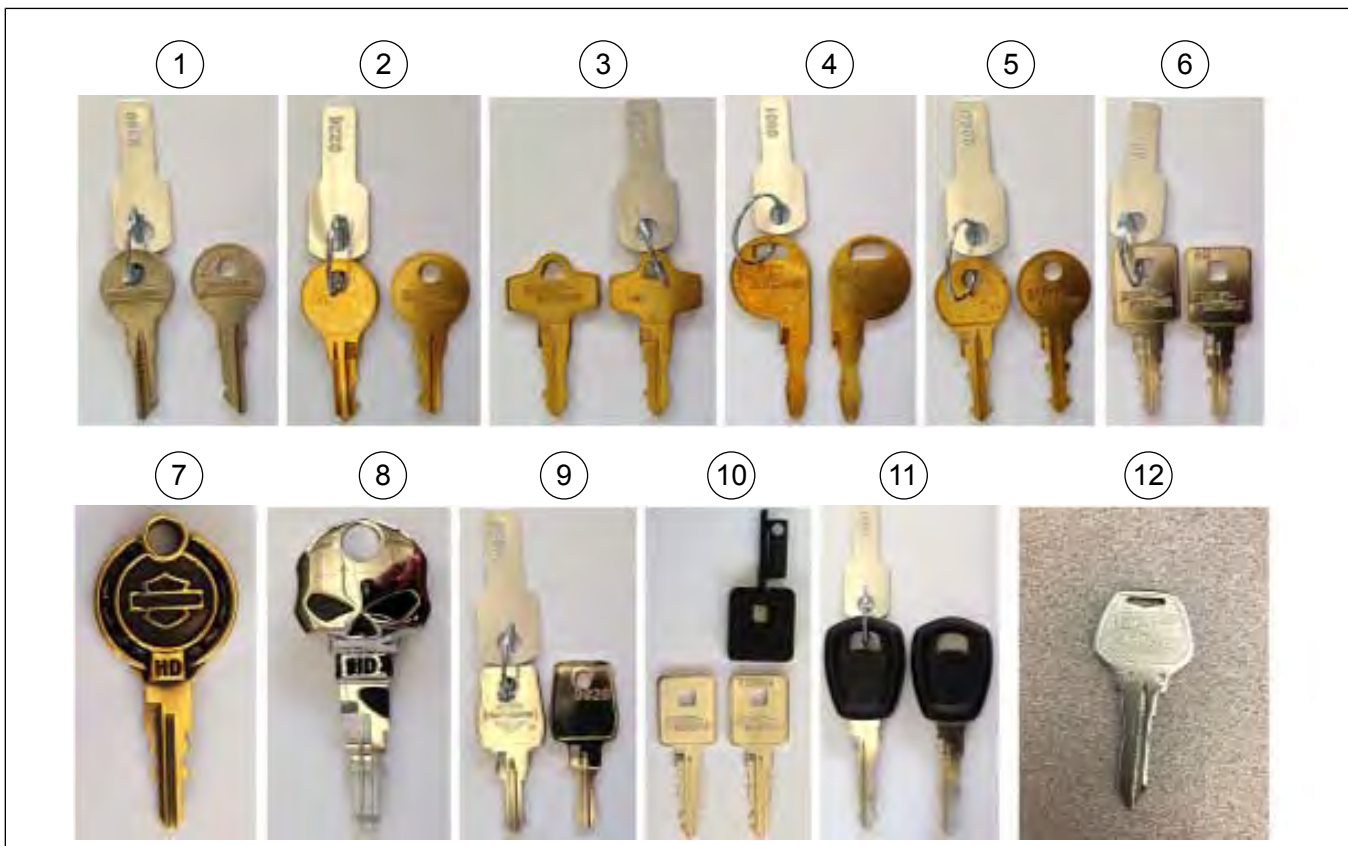


Figure 5. KEYS - FLAT STYLE

Table 1.

PHOTO	P/N	XXXX=Code Format Reference	Fitment (Reference Only)
1	48155-30/xxxx	B250-B499 or H601-H825	Used on '30-'86 models
2*	71626-62/xxxx	0226, 0227-0450	Used on '62-'86 models
3*	48152-82/xxxx	0001, 0002-0100	Used on '82-'92 models
4*	61077-82/xxxx	0501, 0502-0600	Used on '82-'92 models
5*	71583-85A/xxxx	0000, 0001-0199	Used on '84-'95 FX & FL Softail models
6*	71451-94A/xxxx	00A0, 00A1-0VX3**	Used on '94-'11 XL, 94 FXR models
7*	71039-04/xxxx	00A0, 00A1-0VX3**	Fits '94-'11 XL models - Bar & Shield
8*	71041-04/xxxx	00A0, 00A1-0VX3**	Fits '94-'11 XL models - Skull
9	71639-98/xxxx	9926, 9927-9975	Used on '98-later Locking Gas Caps
10	90300034/xxxxx	7000A, 7000B-7285D	Used on '12-later XL models
11	90300084/xxxx	2001, 2002-3174	Used on '15-later XG models
12	71451-78/xxxx	See note below	Used on '82-93 FXR & 79-83 XL models

\* Whenever a key code is noted in less than four digits, fill in the first digits with zeros to total four digits.

\*\* The last digit can only be 0, 1, 2 or 3.

**NOTE**

The key number and code you order under #71451-78 will be superseded to an appropriate replacement key number that will be shipped from HD Parts warehouse. Any key code you see associated with the superseded part number will be different that the key code you entered with your order. That will be correct.

**KEYS - BARREL STYLE**



Figure 6. KEYS - BARREL STYLE

Table 2.

PHOTO	P/N	XXXX=Code Format Reference	Fitment (Reference Only)
13	71452-91A/xxxx	3101, 3102-4102	Used on '91-later models
14	90300043/xxxxHD	5000HD, 5001HD-6079HD	Used on '12-later models
15	71040-04/xxxx	3101, 3102-4102 or 5000HD, 5001HD-6079HD	Fits '91-later models - Skull
16	71038-04/xxxx	3101, 3102-4102 or 5000HD, 5001HD-6079HD	Fits '91-later models - B&S
17	71031-04/xxxx	3101, 3102-4102 or 5000HD, 5001HD-6079HD	Fits '91-later models - CVO
18	71793-08	K=3101, 3102-4102 or 5000HD, 5001HD-6079HD	Used on '08-'10 FXCW/C
19	76537-08	K=3101, 3102-4102 or 5000HD, 5001HD-6079HD	Used on '08-'15 CVO models
20	90300106	K=5000HD, 5001HD-6079HD	Used on '16-later CVO
20	90300107 (Japan)	K=5000HD, 5001HD-6079HD	Used on '16-later CVO Japan
21	90300109	K=5000HD, 5001HD-6079HD	Used on '16-later CVO
21	90300110 (Japan)	K=5000HD, 5001HD-6079HD	Used on '16-later CVO Japan

**LOCKS - FLAT KEY STYLE:**

<b>Key Code Format:</b>	K=00A0, 00A1-0VX3
	-OR-
	K=0000 (Random Code)

Table 4.

P/N	Lock	Fitment (Reference Only - See Parts Books)
71441-94	Ignition Switch	Used on '75-'11 FX, '94-'11 XL, XR, Dyna, Softail & '94 FXRs. (supercedes 48415-99 & 71424-77)
48153-02B	Fork Lock	Used on '03-'11 XL and XR models.
71425-77	Ignition Switch	Used on '82-'93 FXRs & '79-'93 XL models

<b>Key Code Format:</b>	K=7000A, 7000B-7285D
	-OR-
	K=0000 (Random Code)

**Table 6.**

<b>P/N</b>	<b>Lock</b>	<b>Fitment (Reference Only ' See Parts Books)</b>
71400058	Ignition Switch	Used on '12-'13 XL and XR models.
71400083	Ignition Switch	Used on '14-later XL models.
45600014	Fork Lock	Used on '12-later XL models and '12-'13 XR models.
90300063	Fork Lock	Used on '14-later XL models.

**LOCKS - BARREL KEY STYLE**

<b>Key Code Format:</b>	K=3101, 3102-4102 (pre-2011 Barrel Keys)
	-OR-
	K=5000HD, 5001HD-6079HD (2012-later Barrel Keys)
	-OR-
	K=0000 (Random Code)

**Table 8.**

<b>P/N</b>	<b>Lock</b>	<b>Fitment (Reference only - See Parts Books)</b>
71403-01	Ignition Switch	Used on -02--06 VRSC models.
70020-05	Ignition Switch	Used on '06-later VRSC models.
71542-06	Ignition Switch	Used on '06 CVO VRSCSE2 models.
71428-90B	Ignition Switch	Used on '91-'00 Dyna and '91-'94 Softail models.
71536-93	Ignition Switch	Used on '93-'94 Dyna and Softail and '93-'05 Touring models.
71313-96A	Ignition Switch	Used on '93-'11 Dyna, '96-'10 Softail and '94-'13 Road King models.
71705-97	Ignition Switch	Used on '96-'05 Dyna models (except FXDWG).
71473-07A	Ignition Switch	Used on '07 CVO Dyna models.
71517-11	Ignition Switch	Used on '11-later Dyna and Softail models
71794-11	Ignition Switch	Used on '11-later FXS and FXSB models.
71400113	Ignition Switch	Used on '14-later FXDL models.
71792-08	Ignition Switch	Used on '08-'10 FXCW/C models.
71794-08	Ignition Switch	Used on '08-'10 FXCW/C models.
71605-07	Ignition Switch	Used on '07-'08 CVO Springer and Road King models.
71539-08	Ignition Switch	Used on '08-'10 CVO Touring models.
76608-10	Ignition Switch	Used on '10 CVO FLHTCUSE5 models.
76614-10	Ignition Switch	Used on '10 CVO FLHTCUSE5 models.
45600001	Ignition Switch	Used on '11 FLTRUSE and FLHTCUSE6 models.
45600002	Ignition Switch	Used on '11 FLTRUSE and FLHTCUSE6 models for Japan.
76617-11	Ignition Switch	Used on '11 CVO FLHXSE2 models.
71532-03	Ignition Switch	Used on '03-'13 Touring and Trike models.
45600004	Ignition Switch	Used on '12 FLHTCUSE7 and '13 FLHTCUSE8 and FLHTUC8 models.
45600005	Ignition Switch	Used on '12 FLHXSE3 and FLTRXSE2 and '13 FLTRXSE2 and FLHT-CUSE8
71400063	Ignition Switch	Used on '12-'13 Touring models.
90300059	Ignition Switch	Used on '12-'13 CVO FLHXSE3 and FLTRXSE/2 models.
45600019	Ignition Switch	Used on '13 FLHTCU8 and FLHTCUSE8 models.
45600020	Ignition Switch	Used on '13 FLTRXSE2 and FLHTCUSE8 models.
71400014	Ignition Switch	Used on '14-later FLHTP police models.
71400015	Ignition Switch	Used on '14-later FLHTCU, FLHTK models.
71400016	Ignition Switch	Used on '14-later FLHX/S models.
71400017	Ignition Switch	Used on '14-later Touring models.
71400090	Ignition Switch	Used on '14-later CVO FLHTK models
71400126	Ignition Switch	Fits '14-later Electra Glide, Street Glide, Ultra Ltd, Road Glide, Tri-Glide (exc CVO).
45804-01A	Fork Lock	Used on '02-later VRSC models.
45429-05	Fork Lock	Used on '06-'07 VRSCR models.
45680-90	Fork Lock	Used on '93-'06 Dyna and '00-later Softail models.
71540-94A	Fork Lock	Used on '93-'94 Dyna and Softail and '93-later Road King models.
71475-06B	Fork Lock	Used on '06-later Dyna models.
45600037	Fork Lock	Used on '15-later FLRT models.
53710-93	Saddlebag Lock	Used on '93-'13 Touring (except Police) and '12-'13 FLD models.

Table 8.

P/N	Lock	Fitment (Reference only - See Parts Books)
46316-04	Saddlebag Lock	Fits '98-later Road King Classic models.
46287-04	Saddlebag Lock	Fits '04-'07 Road King Custom models.
53986-07	Saddlebag Lock	Used on '07-'13 CVO Ultra models.
90200406	Saddlebag Lock	Used on '11-later CVO Softail models.
90200407	Saddlebag Lock	Used on '11-later CVO Softail models.
90300024	Saddlebag Lock	Used on '14-later Touring models.
90300080	Saddlebag Lock	Used on '13 CVO FLHCUSE8.
90300092	Saddlebag Lock	Used on '14-later CVO FLHTK models.
90300003	Saddlebag Lock	Fits most soft-sided leather and vinyl saddlebags. Does not fit FLHRC and FLHRS.
90300010	Saddlebag Lock	For use with Heritage Flat Top & Lock Kit P/N 88373-10.
53194-07	Tour-Pak Lock	Fits '97-'13 Touring models equipped with Accessory or OE Tour-Pak.
53848-00	Tour-Pak Lock	Used on '92-'13 Touring models.
53865-06B	Tour-Pak Lock	Used on '06-'07 CVO Ultra and '09-'13 Trike models.
53594-08A	Tour-Pak Lock	Used on '08-'13 CVO Ultra models.
90300030	Tour-Pak Lock	Used on '14-later FLHTCU, FLHTK and FLHTCUTG models. Fits '14-later Touring models equipped with Accessory Tour-Pak.
90300081	Tour-Pak Lock	Used on '14-later CVO FLHTK models
54360-05	Tour-Pak Lock	Fits models equipped with Leather or Synthetic Leather Tour-Pak Luggage (except P/N 79189-06).
90300051	Trunk Lock	Used on '14-later FLHTCUTG models.
53000339	Trunk Lock	Used on '15-later FLRT models.
57411-08	Glove Box Lock	Fits '91-'13 Touring and Trike models equipped with Electra Glide Ultra style fairing lowers.
57417-08	Glove Box Lock	Fits '91-'13 Touring and Trike models equipped with Fairing Lower Locking Glove Box