

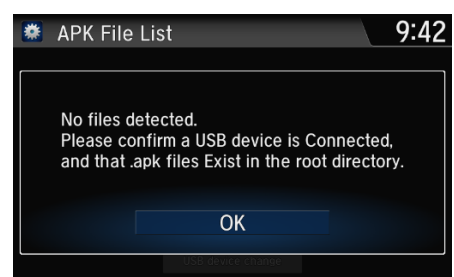
The App Installer Icon Explained

AFFECTED VEHICLES

2016–17 Accord (EX and above), 2016–17 Civic (EX and above), 2017 Clarity FCV, 2017 CR-V (EX and above), 2017 Pilot (EX and above), and 2017 Ridgeline (RTL-T, RTL-E, Black)

EDITOR'S NOTE: This article replaces the one posted in **February 2017** to extend the article's shelf life. The issue(s) covered are still being addressed.

The **App Installer** icon, listed under **App List** on the Display Audio screen, has drawn a few questions from curious customers. This icon is meant for future apps that may be developed. At this time, however, there are none available or any plans to develop them.



Do not load any apps or software into the audio system using the **App Installer** icon; it could lead to unwanted system operation. As a reminder, we're including info about this in future owner's manuals.