

June 13, 2017

06752 Version 5

Warranty Extension: SRS Indicator Is On with DTC 51-XX, 53-XX or U0151

Supersedes 16-007, *Warranty Extension: 2008–10 Accord SRS Unit*, dated September 14, 2016 to revise the information highlighted in yellow

AFFECTED VEHICLES

| Year | Model | Trim | VIN Range |
|---------|--------|--------|---|
| 2008–10 | Accord | 4-Door | Check the iN VIN status for eligibility |

REVISION SUMMARY

The revision contains checks to ensure the following three important parameters of this warranty extension are followed:

- Check the SRS indicator.** This bulletin does NOT apply if the SRS indicator is operating normally; when you start the vehicle, the SRS indicator comes on for six seconds and goes out.
- Check for DTCs.** If the SRS indicator remains on after six seconds and there is no apparent problem with the vehicle (like deployed or missing airbags or a disconnected or missing SRS unit), connect the i-HDS and do an All DTC check. Write down any DTCs stored on the RO. Your warranty clerk will need to enter these to file a warranty claim.
- DTC 51-XX, 53-XX or U0151 is stored.** If these DTCs are not indicated in the All DTC Check, the SRS unit cannot be replaced under this warranty extension. Continue with normal troubleshooting.

If a claim is filed and the parameters are not followed, your claim may be debited.

BACKGROUND

American Honda is extending the warranty on the SRS unit to 15 years from the original date of purchase with no mileage limit for a certain issue where the SRS indicator is on with one of the following DTCs stored:

- 51-XX (internal failure of the SRS unit)
- 53-XX (internal failure of the SRS unit)
- The i-HDS does not communicate with the SRS unit and DTC U0151 (gauge control module lost communication with SRS unit).

There are two different bulletins for 2008-2010 Accord with similar SRS Unit issues.

- Make sure you follow the bulletin indicated by the iN VIN Status Inquiry.
- There are two completely different and separate VIN groups.
- The repair for the two bulletins is different.
 - **16-007 Warranty Extension: SRS Indicator Is On with DTC 51-XX, 53-XX or U0151** - Confirm the SRS indicator remains on and DTC 51-XX, 53-XX or U0151 is stored. Replace the SRS unit only when the SRS indicator is on and the applicable DTC is indicated.
 - **16-006 Safety Recall: 2008–10 Accord SRS Unit Replacement** - Inspect the date code on the SRS unit, and if the date code is before March 04, 2010, replace the SRS unit.

This warranty extension will not apply to any vehicle that has ever been declared a total loss or sold for salvage by a financial institution or insurer, or has a branded or similar title under any state's law.

CUSTOMER INFORMATION: The information in this bulletin is intended for use only by skilled technicians who have the proper tools, equipment, and training to correctly and safely maintain your vehicle. These procedures should not be attempted by "do-it-yourselfers," and you should not assume this bulletin applies to your vehicle, or that your vehicle has the condition described. To determine whether this information applies, contact an authorized Honda automobile dealer.

CUSTOMER NOTIFICATION

Owners of affected vehicles will be sent a notification of this campaign.

Do an iN VIN status inquiry to make sure the vehicle is shown as eligible.

CORRECTIVE ACTION

If the SRS indicator is on, do an all DTC check, and if the applicable DTC is indicated, replace the SRS unit.

PARTS INFORMATION

| Part Name | Part Number Ordered | You may receive any of the following | Quantity |
|------------|---------------------|--------------------------------------|----------|
| SRS Unit | 77960-TA0-A02 | 77960-TA0-A02 77960-TA0-L02 | 1 |
| Torx Bolts | 90137-S84-A01 | N/A | 3 |

WARRANTY CLAIM INFORMATION

For an all DTC check with no SRS unit replacement:

Use this warranty claim information if the SRS indicator was on but the SRS unit was not replaced.

To avoid a warranty claim being charged back to your dealership, the DTC must be entered in the DTC field.

NOTE: Only inspect the vehicle when the SRS indicator is ON. AHM will pay for one all DTC check with the SRS indicator on regardless of the DTC. **Any subsequent inspections or repairs are customer pay unless DTCs 51-XX, 53-XX, or U0151 are stored.**

| Operation Number | Description | Replacement Part Number | Flat Rate Time | Defect Code | Symptom Code | Template ID | Failed Part Number |
|------------------|----------------------|-------------------------|----------------|-------------|--------------|-------------|--------------------|
| 7525B1 | Inspect the vehicle. | No parts replaced. | 0.3 hr | 6R200 | JX100 | 16-007A | 77960-TA0-A01 |

For an all DTC check where the SRS unit is replaced:

To avoid a warranty claim being charged back to your dealership, the SRS unit ID (serial number) must be entered in the serial number field of the warranty claim and the DTC must be entered in the DTC field.

Use this warranty claim information if the SRS unit was replaced because DTC(s) 51-XX, 53-XX, or U0151 were stored.

| Operation Number | Description | Replacement Part Number | Flat Rate Time | Defect Code | Symptom Code | Template ID | Failed Part Number |
|------------------|--|-------------------------|----------------|-------------|--------------|-------------|--------------------|
| 7525B1 | Inspect the vehicle. | SRS unit was replaced. | 0.3 hr | 6R200 | JX000 | 16-007B | 77960-TA0-A01 |
| 7511C1 | Replace the SRS control unit – add if replacing. | 77960-TA0-A02 | 0.8 hr | | | | |
| 7525B1 | Inspect the vehicle. | SRS unit was replaced. | 0.3 hr | 6R200 | JX000 | 16-007C | 77960-TA0-A01 |
| 7511C1 | Replace the SRS control unit – add if replacing. | 77960-TA0-L02 | 0.8 hr | | | | |

INSPECTION PROCEDURE

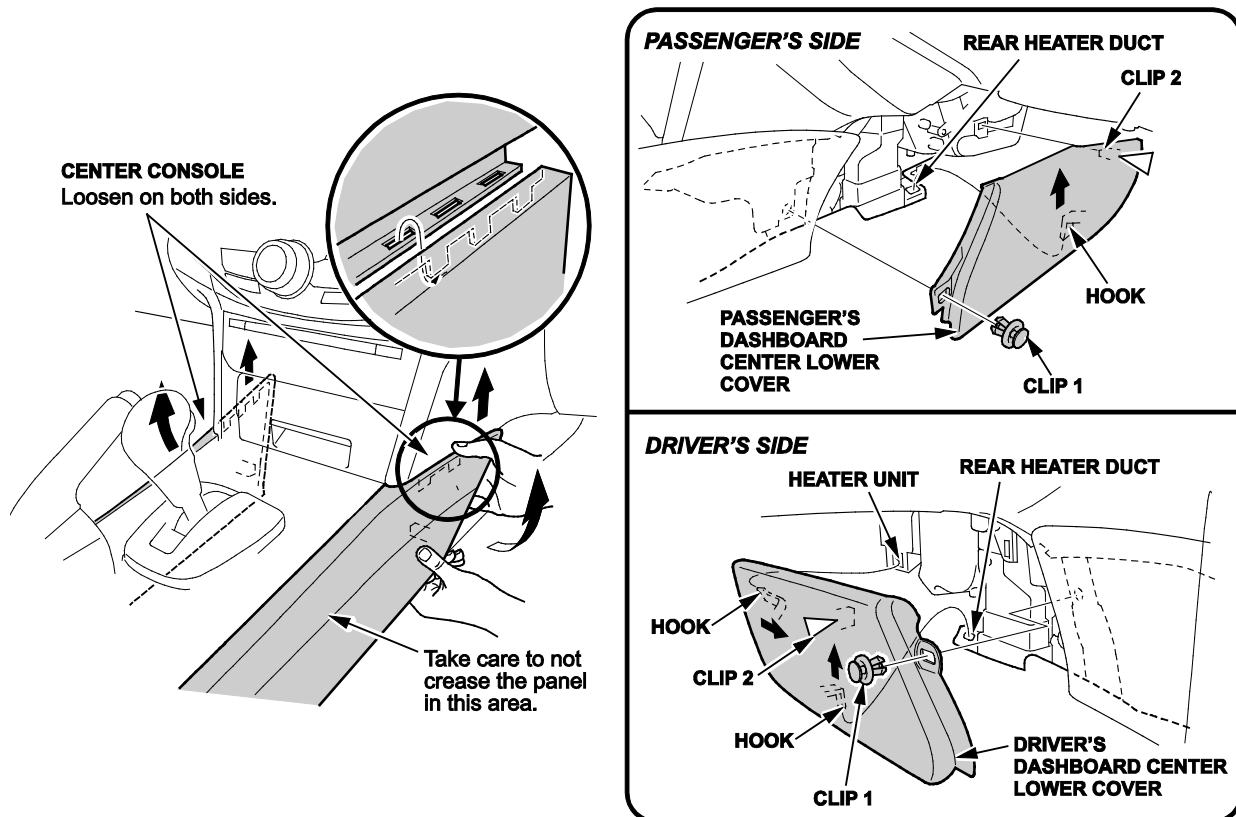
1. Turn the ignition to ON and check if the SRS indicator comes on for about 6 seconds, then turns off.
 - If the indicator comes on, then goes off after about 6 seconds, the vehicle is OK.
 - If the indicator does not come on, or if it stays on, go to step 2.
2. Do an all DTC check. Write down all DTCs on the RO. Your warranty clerk will need this information to file a warranty claim.
 - If any of the following DTCs appears, go to REPAIR PROCEDURE.
 - 51-XX
 - 53-XX
 - U0151
 - For all other SRS DTCs, **these repairs are not covered** under this warranty extension. Make sure all the DTCs are written on the RO so your warranty clerk can file a claim for all DTC check only.
 - Contact the customer and inform them that the problem with the SRS is not covered by this warranty extension and that it is a customer pay repair.
 - If the customer declines the customer pay repairs, make sure you write down the description of the problem and the DTCs on the RO. Also indicate on the RO that the SRS is not operating properly and may pose a risk to the occupants in the event of a collision, either because the airbags may not deploy, or the airbags may deploy in a manner that does not account for all factors involved in the collision.

REPAIR PROCEDURE

1. Do the battery disconnection procedure, then wait at least 3 minutes before starting work.

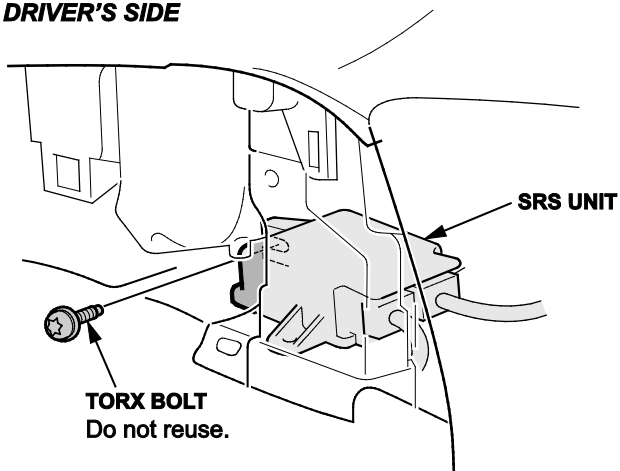
NOTE: Make sure you have the anti-theft code for the audio system or the navigation unit and record the customer's audio unit presets.

2. Remove the driver's and front passenger's dashboard center lower cover.
 - Detach the clip by carefully pulling out the front edge of the console, then up to release the hooks from the dashboard.
 - Carefully pull out the front area of the console to allow room to access and remove clip No. 1.
 - Remove the dashboard center lower cover by releasing clip No. 2, then lift up to release the hook from the heater duct.



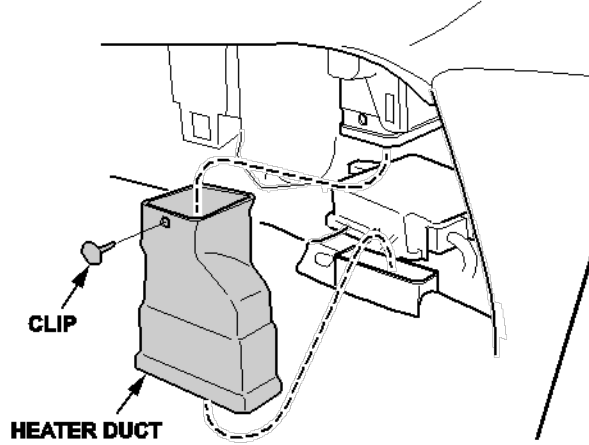
3. Remove the Torx bolt.

DRIVER'S SIDE

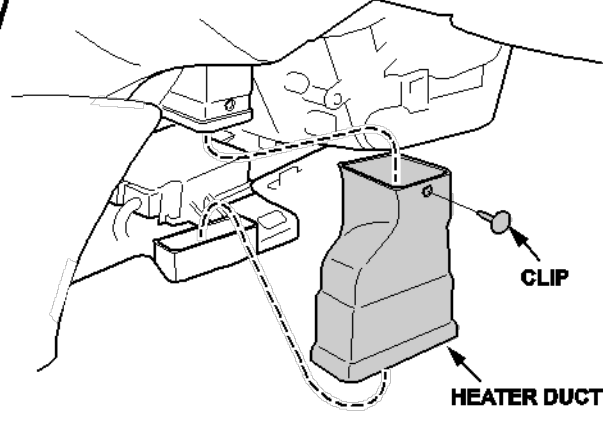


4. Remove the heater duct clip, then remove the heater duct.

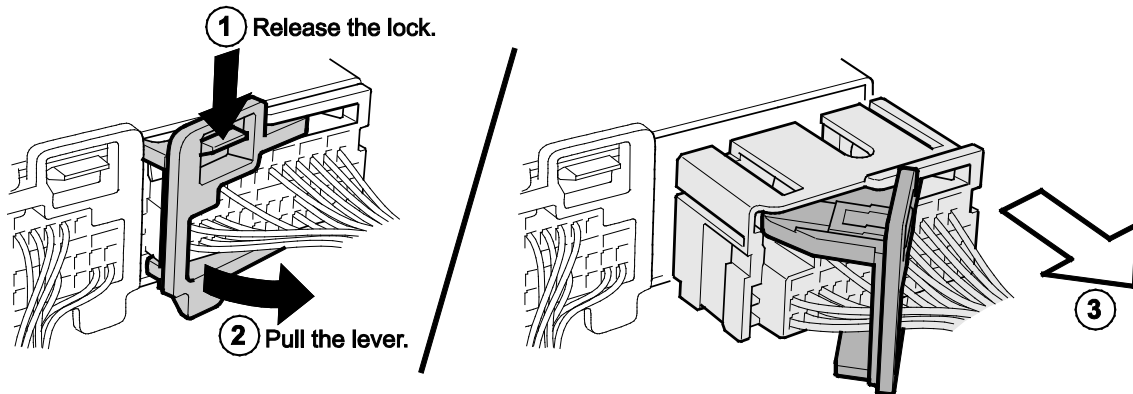
DRIVER'S SIDE



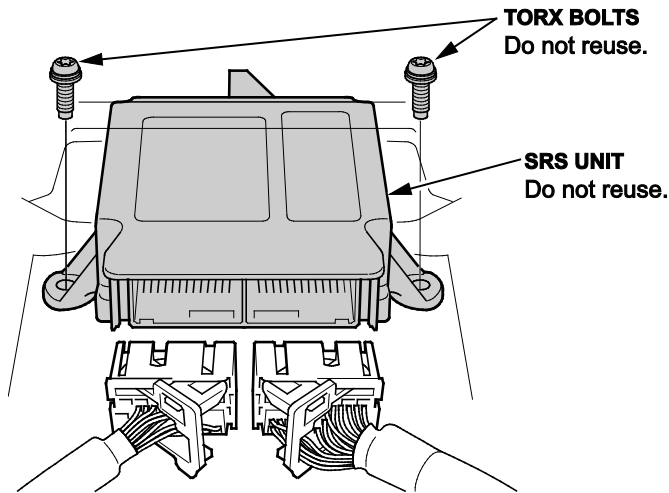
PASSENGER'S SIDE



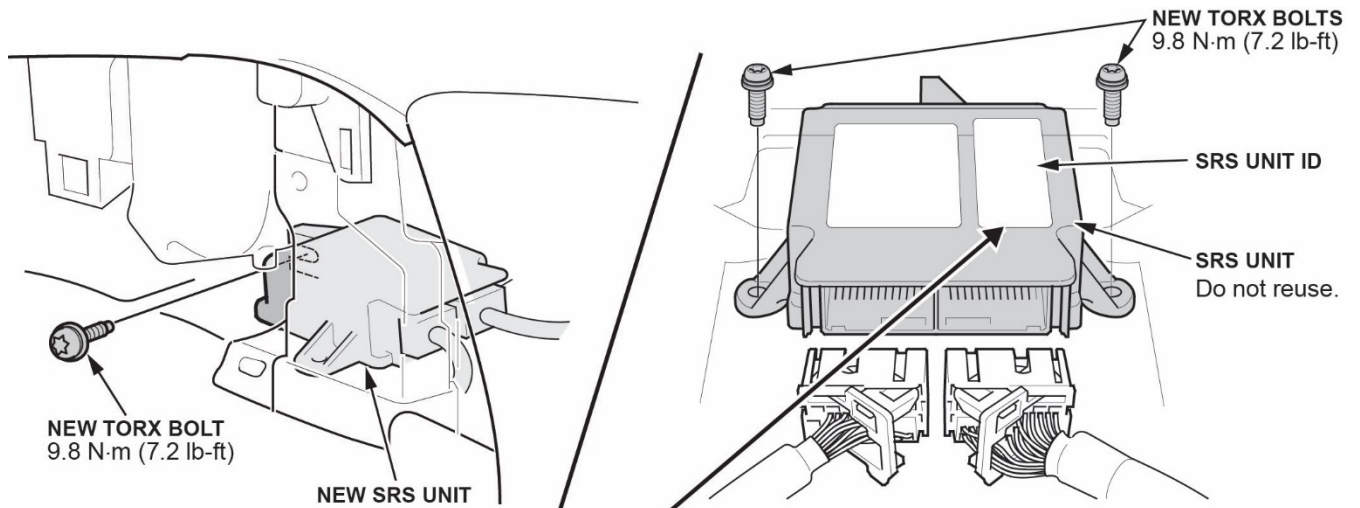
5. Disconnect the SRS unit connectors from the SRS unit by releasing the lever locks, then pull on the lever to disconnect the connectors.



6. Remove the Torx bolts and remove the SRS unit.

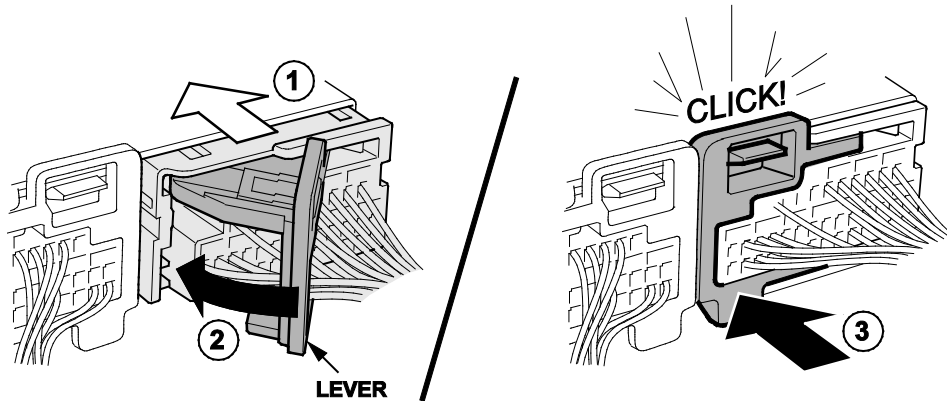


7. Write down the new SRS unit ID (serial number) on the RO, then install the new SRS unit using the new Torx bolts.
NOTE: Make sure the SRS unit is sitting squarely against its bracket before torquing the Torx bolts.



SERIAL NUMBER

8. Connect the SRS connectors to the SRS unit by pushing the connector in and the lever moves to the locked position.



9. Do the battery terminal reconnection procedure.

10. Ready the vehicle for OPDS initialization by doing the following:

- Move the front passenger's seat back to the most upright position.
- Slide the front passenger's seat all the way back.
- Make sure there is nothing in the front passenger's seat back pocket.
- Make sure there is nothing under the front passenger's seat.
- Make sure the vehicle is parked out of direct sunlight.
- Make sure the vehicles temperature has stabilized to the shop temperature (do not initialize the vehicle in extreme cold or hot temperatures).

11. To complete SRS unit initialization, **turn the ignition to ON for 1 full minute, turn the ignition to OFF for another minute, then repeat two more times, making sure to wait 1 full minute between the ignition ON or OFF.** After cycling the ignition 3 times, turn the ignition to ON and if the SRS indicator comes on for about 6 seconds then goes off, the SRS unit initialization is complete.

12. Enter the anti-theft codes for the audio and navigation system (if applicable), then enter the customer's audio unit presets.

13. *Vehicles without navigation:* Set the clock.

14. Reinstall all removed parts in the reverse order of disassembly.

15. Give your warranty clerk the RO that includes the stored DTC(s) and the replacement SRS unit serial number.

END