

February 16, 2017

05820 Version 3

## Noncompliance Recall: HR-V Emission Label

Supersedes 15-053, dated July 28, 2015, to revise the information highlighted in **yellow**

### AFFECTED VEHICLES

Year	Model	Trim	VIN Range
2016	HR-V	ALL	Check the iN VIN status for eligibility

### REVISION SUMMARY

Under REPAIR PROCEDURE, a step was added to include completing the Vehicle Emissions Recall – Proof of Correction certificate for vehicles registered in California.

### BACKGROUND

On a small number of HR-Vs, the vehicle's emission certification label under the hood may be missing or have incorrect information listed. This would cause the vehicle to be noncompliant with applicable emission regulations.

For reporting purposes, there are three noncompliance recalls for checking labels:

15-052, *Noncompliance Recall: HR-V Emission, Tire, and A/C Labels* – Check that all three labels are present, and also check **the vehicle trim** on the emission label.

15-053, *Noncompliance Recall: HR-V Emission Label* – Check that the emission label is present and check **the model year** on the emission label.

15-054, *Noncompliance Recall: HR-V Emission (Trim and Year), Tire, and A/C Labels*- Check that all three labels are present and also check **the vehicle trim and model year** on the emission label.

Do the applicable campaign as indicated in the iN VIN status inquiry.

### CUSTOMER NOTIFICATION

Owners of affected vehicles were sent a notification of this campaign.

Do an iN VIN status inquiry to make sure the vehicle is shown as eligible.

Some vehicles affected by this campaign may be in your used vehicle inventory. Repair these vehicles before they are sold.

NOTE: For California dealers only, make sure to give your customer a Vehicle Emission Recall - Proof of Correction certificate. See REPAIR PROCEDURE for ordering information

### CORRECTIVE ACTION

Inspect the emission label and, if necessary, replace it if it is incorrect or apply a new label if it is missing.

**CUSTOMER INFORMATION:** The information in this bulletin is intended for use only by skilled technicians who have the proper tools, equipment, and training to correctly and safely maintain your vehicle. These procedures should not be attempted by "do-it-yourselfers," and you should not assume this bulletin applies to your vehicle, or that your vehicle has the condition described. To determine whether this information applies, contact an authorized Honda automobile dealer.

## PARTS INFORMATION

Part Name	Part Number	Quantity
Emission Label: 2WD (VIN begins with 3CZRU5) AWD (VIN begins with 3CZRU6)	17277-51M-A00 17277-51M-A10	1

NOTE: There are a small number of vehicles that will need an emission label. Order emissions labels only after finding a vehicle that needs one because the emission label is a controlled part, which requires you to have the VIN when ordering a new one.

## WARRANTY CLAIM INFORMATION

Operation Number	Description	Flat Rate Time	Defect Code	Symptom Code	Failed Part Number
1205A2	Inspect emission label for correct model year.	0.3 hr	5ZX00	JT300	17277-51M-A10
A	Add to apply emission label.	0.1 hr	5ZX00	JT300	17277-51M-A10

Skill Level: Repair Technician

## INSPECTION AND REPAIR PROCEDURE

### Emission Label Inspection and Replacement

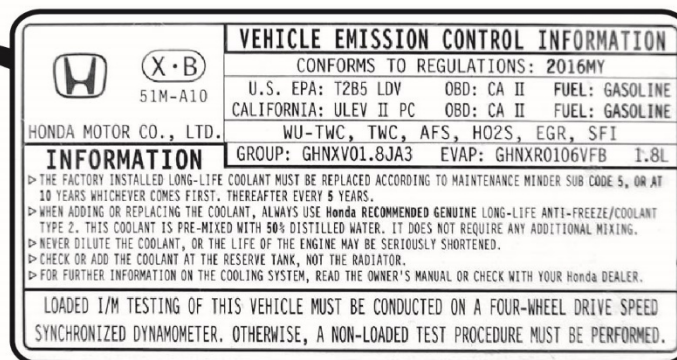
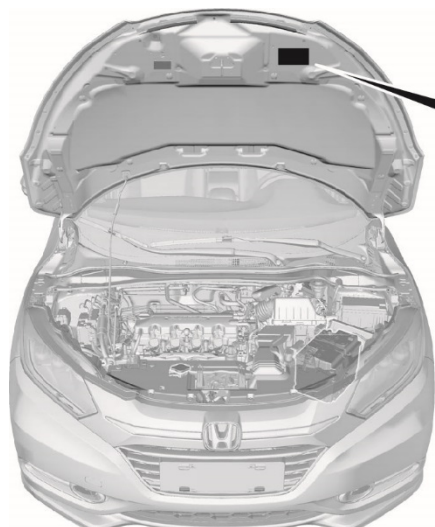
NOTE: The emission label is a controlled part. Make sure you have the VIN available when you are ordering a new one.

1. Open the hood and make sure the emission label is present at the location shown.

- If the label is present, go to step 2.
- If the label is missing, apply a new one:

NOTE: **There are 2 emission labels available.** Make sure you order the correct one for the vehicle.

- Using alcohol and a clean shop towel, clean the hood area where the emission label is placed. Allow the area to dry.
- Peel off the backing from the emission label, and apply it to the hood. Press the label firmly to make sure it sticks. The vehicle is OK. Return the vehicle to the customer.



2. Inspect the emission label to make sure **2016** is the model year listed as shown.

NOTE: **There are 2 emission labels available.** Make sure you order the correct one for the vehicle.

- If the correct model year is listed, the vehicle is OK. Return the vehicle to the customer.
- If the wrong model year is listed, replace it with the correct one.
  - Remove the original label and use 3M adhesive remover to clean any remaining adhesive residue.
  - Using alcohol and a clean shop towel, clean the hood area where the emission label is placed. Allow the area to dry.
  - Peel off the backing from the emission label, and apply it to the hood. Press the label firmly to make sure it sticks. The vehicle is OK. Return the vehicle to the customer.

HONDA MOTOR CO., LTD.	<b>VEHICLE EMISSION CONTROL INFORMATION</b>	
	CONFORMS TO REGULATIONS: <b>2016MY</b>	
U.S. EPA: T2B5 LDV	OBD: CA	FUEL: GASOLINE
CALIFORNIA: ULEV II PC	OBD: CA II	FUEL: GASOLINE
WU-TWC, TWC, AFS, HO2S, EGR, SFI		
GROUP: GHNXV01.8JA3	EVAP: GHNXR0106VFB	1.8L
<b>INFORMATION</b>		
▷ THE FACTORY INSTALLED LONG-LIFE COOLANT MUST BE REPLACED ACCORDING TO MAINTENANCE MINDER SUB CODE 5, OR AT 10 YEARS WHICHEVER COMES FIRST. THEREAFTER EVERY 5 YEARS.		
▷ WHEN ADDING OR REPLACING THE COOLANT, ALWAYS USE Honda RECOMMENDED GENUINE LONG-LIFE ANTI-FREEZE/COOLANT TYPE 2. THIS COOLANT IS PRE-MIXED WITH 50% DISTILLED WATER. IT DOES NOT REQUIRE ANY ADDITIONAL MIXING.		
▷ NEVER DILUTE THE COOLANT, OR THE LIFE OF THE ENGINE MAY BE SERIOUSLY SHORTENED.		
▷ CHECK OR ADD THE COOLANT AT THE RESERVE TANK, NOT THE RADIATOR.		
▷ FOR FURTHER INFORMATION ON THE COOLING SYSTEM, READ THE OWNER'S MANUAL OR CHECK WITH YOUR Honda DEALER.		
LOADED I/M TESTING OF THIS VEHICLE MUST BE CONDUCTED ON A FOUR-WHEEL DRIVE SPEED SYNCHRONIZED DYNAMOMETER. OTHERWISE, A NON-LOADED TEST PROCEDURE MUST BE PERFORMED.		

3. **For California residents only:** Fill out a Vehicle Emissions Recall – Proof of Correction certificate, and use **JT3** as the recall number. Give the certificate to your customer, and advise him or her to keep it as proof that the product update was completed. Your customer will need to submit this certificate to the DMV only if the DMV requests it. If you need more certificates, use reorder number Y0657.

**Vehicle Emission Recall - Proof of Correction**

License Number	Make	Year Model	Body Type	Vehicle Identification Number
Manufacturer			Recall Number <b>JT3</b>	
The above described vehicle has been repaired, modified and/or equipped with new emission control devices to meet applicable California Emission Control Laws.				
Dealer's Name		Address, City, State and Zip		
Date		Dealership's Authorized Signature		
		X		
Return this certificate to DMV only when required - otherwise retain for your records.				

Y0657 ACL 24832 (0212)

END