



Service Bulletin

File in Section: -

Bulletin No.: 15-NA-067

Date: July, 2016

INFORMATION

Subject: Information on Ordering New Delphi Style Fuel Pump

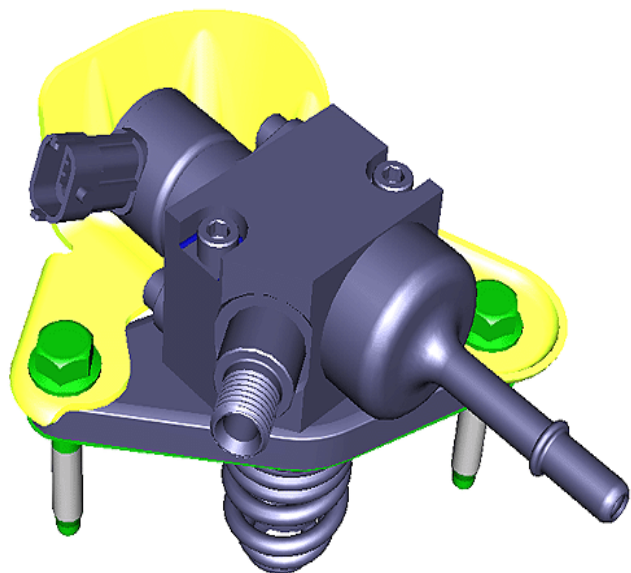
Brand:	Model:	Model Year:		VIN:		Engine:	Transmission:
		from	to	from	to		
Chevrolet	Silverado	2016	2017			5.3L Engine (RPOs L83, L8B)	8 Speed Transmission (RPOs M5U, M5X)
GMC	Sierra						

Involved Region or Country	North America and N.A. Export Regions
----------------------------	---------------------------------------

The purpose of this Bulletin is to inform dealership personnel that when replacing the fuel pump, the vehicle should be serviced with the same style high pressure fuel pipe and SIDI fuel pump it was equipped with for the following reasons:

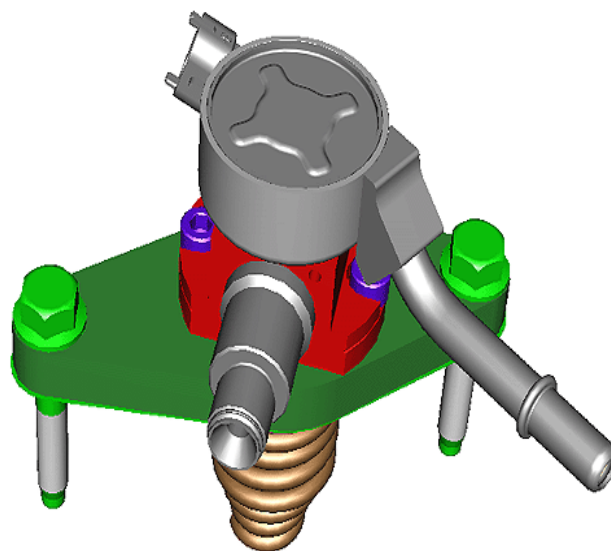
- DTC P00C6 may set during cold starts.
- DTCs P228C and P228D may be set during other extreme hot or cold driving.

Note: A note will be added in the Parts Catalog to ensure that the technician orders and replaces the fuel pump with the correct part number and style.



4318705

Stanadyne style fuel pump part number 12669519 and fuel pipe part number 12673077 as shown above.



4318707

Delphi style fuel pump part number 12673522 and fuel pipe part number 12673079 as shown above.

Version	2
Modified	June 28, 2016 – Adding 2017 Model Year and including Engine RPO L8B and Transmission RPO M5X.

