

TECHNICAL BULLETIN  
LTB00965NAS1  
27 JUN 2016



© Jaguar Land Rover North America, LLC

NOTE: The information in Technical Bulletins is intended for use by trained, professional Technicians with the knowledge, tools, and equipment required to do the job properly and safely. It informs these Technicians of conditions that may occur on some vehicles, or provides information that could assist in proper vehicle service. The procedures should not be performed by 'do-it-yourselfers'. If you are not a Retailer, do not assume that a condition described affects your vehicle. Contact an authorized Land Rover service facility to determine whether this bulletin applies to a specific vehicle.

**SECTION: 501-03**

Rear Side Door Difficult To Open

**AFFECTED VEHICLE RANGE:**

**Range Rover (LG)**

**Model Year:** 2013 Onwards  
**VIN:** 001171 Onwards  
**Assembly Plant:** Solihull

MARKETS:

NAS

**CONDITION SUMMARY:**

**Situation:** Either rear side door may be difficult to open.

**Cause:** This may be caused by the rear door margin flip seal becoming kinked or trapped behind the rear quarter window.

**Action:** Should a customer express this concern, follow the Service Instruction below.

**PARTS:**

LR079423	RH upper door seal (SWB)	1
LR079424	LH upper door seal (SWB)	1
LR079442	RH upper door seal (LWB)	1
LR079443	LH upper door seal (LWB)	1

**TOOLS:**

Refer to Workshop Manual for any required special tools.

**WARRANTY:**

 **NOTE: If required, an allowance (\$152.00) may be claimed to cover the cost of a vehicle window replacement technician to remove and install the rear quarter window. Claim using 'ZZZ001'.**

 **NOTE: Repair procedures are under constant review, and therefore times are subject to change; those quoted here must be taken as guidance only. Always refer to TOPIx to obtain the latest repair time.**

 **NOTE: DDW requires the use of causal part numbers. Labor only claims must show the causal part number with a quantity of zero.**

DESCRIPTION	SRO	TIME (HOURS)	CONDITION CODE	CAUSAL PART
Rear Quarter Window Gap - Check / Apply Slip Coat	<b>76.81.60</b>	0.7	12	LR034327
Rear Quarter Window - Remove, Adjust & Refit	<b>76.81.61</b>	2.0	12	LR034327
Flip seal - Rear door - Renew	<b>76.31.58</b>	0.1	12	LR034327

 **NOTE: Normal Warranty procedures apply.**

### **SERVICE INSTRUCTION:**

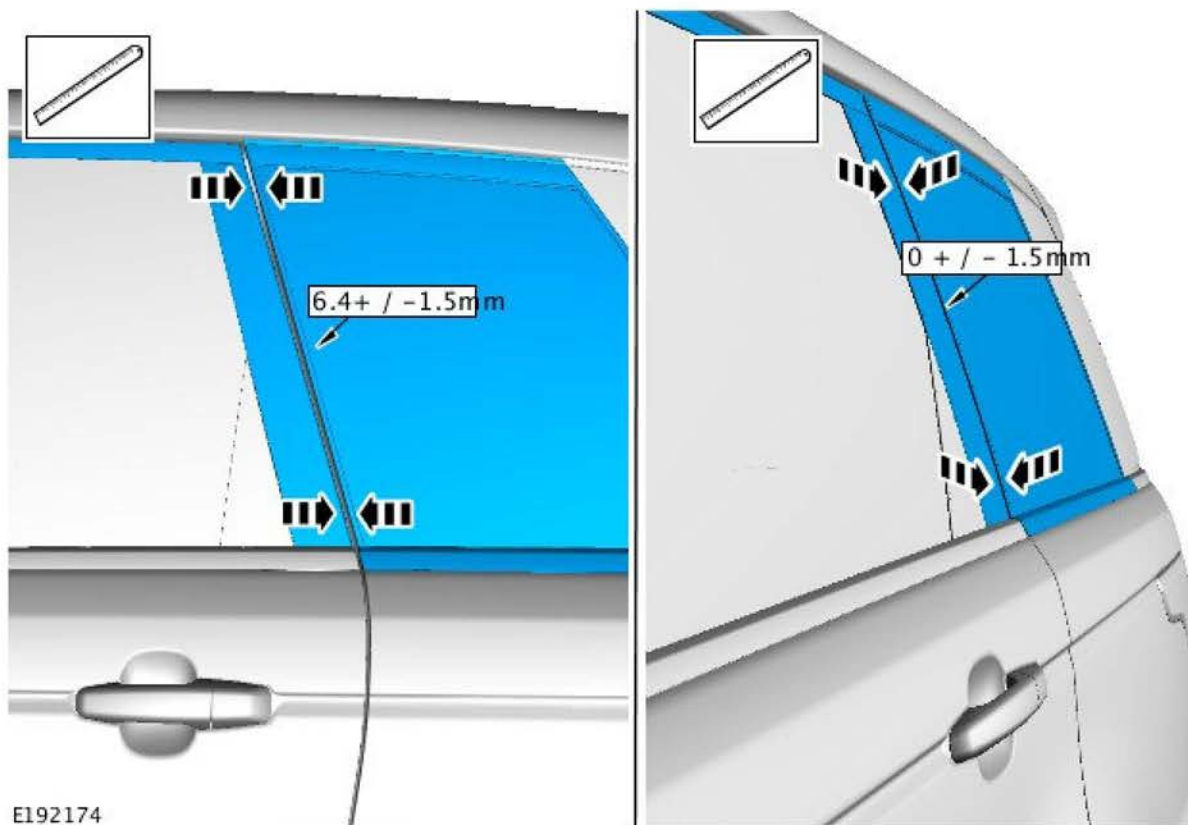
 **NOTE: This repair process requires the assistance of a vehicle window replacement technician.**

 **NOTE: Repeat this Service Instruction for both sides of the vehicle.**

1.  **NOTE: Left side shown; right side similar.**

Measure the alignment between the rear door and rear quarter window (record measurement).

1. If the alignment does not meet the specifications shown, go to Step 2.
2. If the alignment does meet the specifications, apply slip coating (as supplied in the Squeak & Rattle kit) to the margin seal flock coating and front edge of the rear quarter window.
  - Apply 6-8 times, allowing approximately 5 minutes between applications for each coat to dry.



E192174

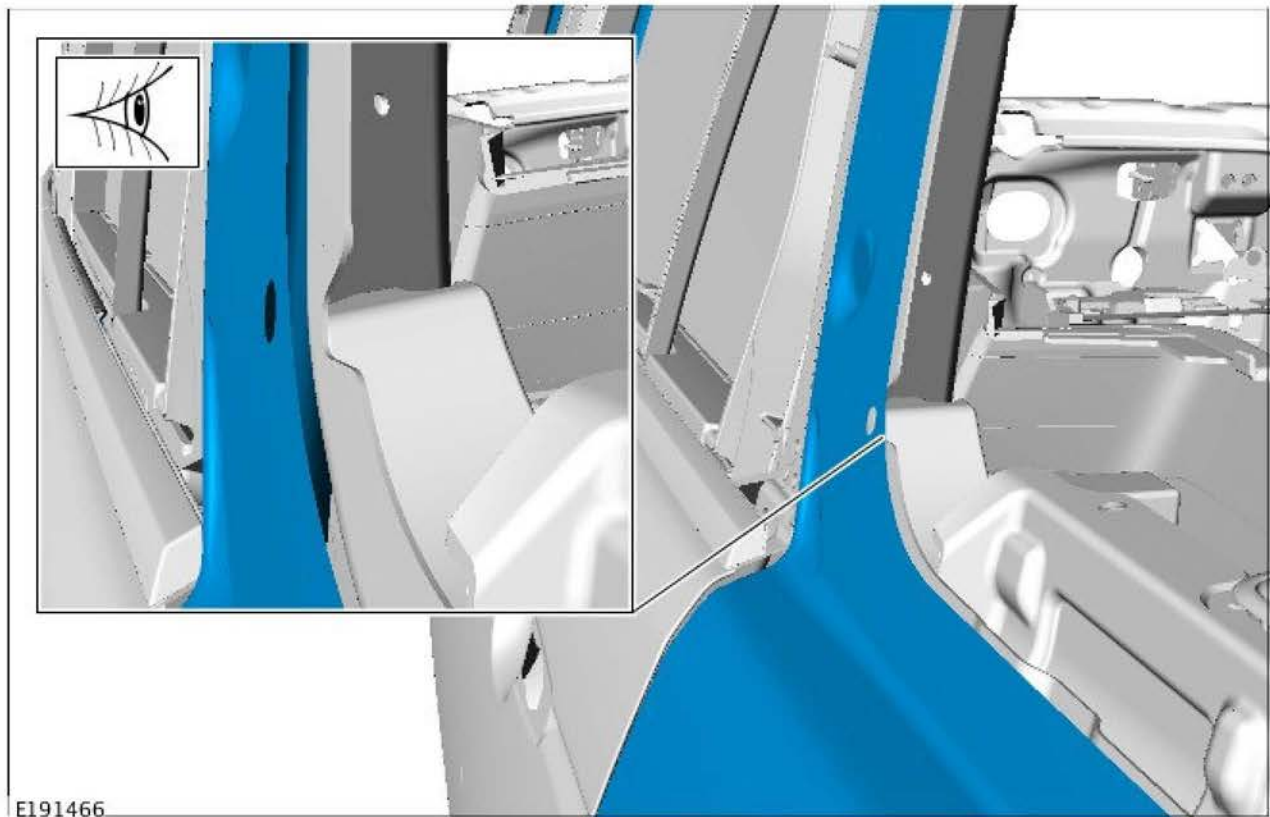
2. Remove the C-pillar Upper Trim Panel (see TOPIx Workshop Manual section 501-05: Interior Trim and Ornamentation).
3. Remove the D-pillar Trim Panel (see TOPIx Workshop Manual section 501-05: Interior Trim and Ornamentation).
4. Remove the Rear Quarter Panel Moulding (see TOPIx Workshop Manual section 501-08: Exterior Trim and Ornamentation).

5. With the assistance of a vehicle window replacement technician, remove the rear quarter window.

6.  **NOTE: Left side shown; right side similar.**

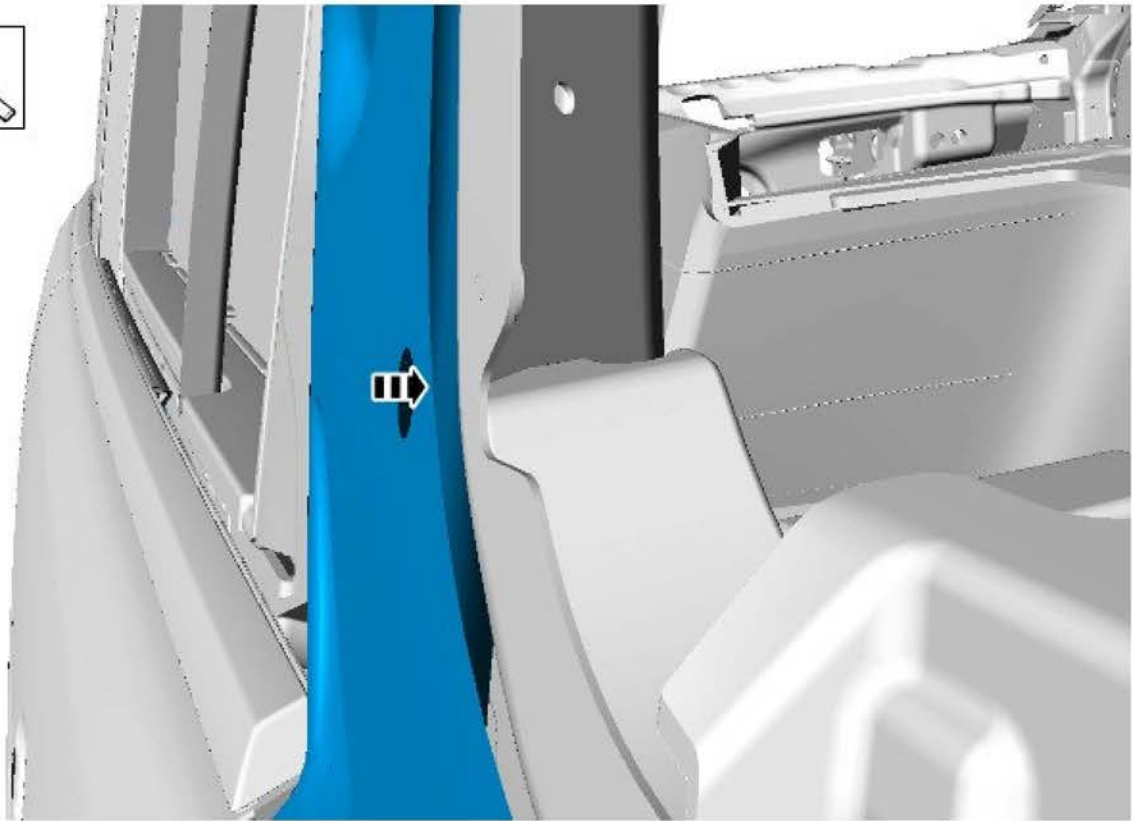
Visually check the body panel.

1. If there is a gap between the body panel and reinforcement panel, go to Step 7.
2. If there is no gap between the body panel and reinforcement panel, go to Step 8.



7.  **NOTE: Left side shown; right side similar.**

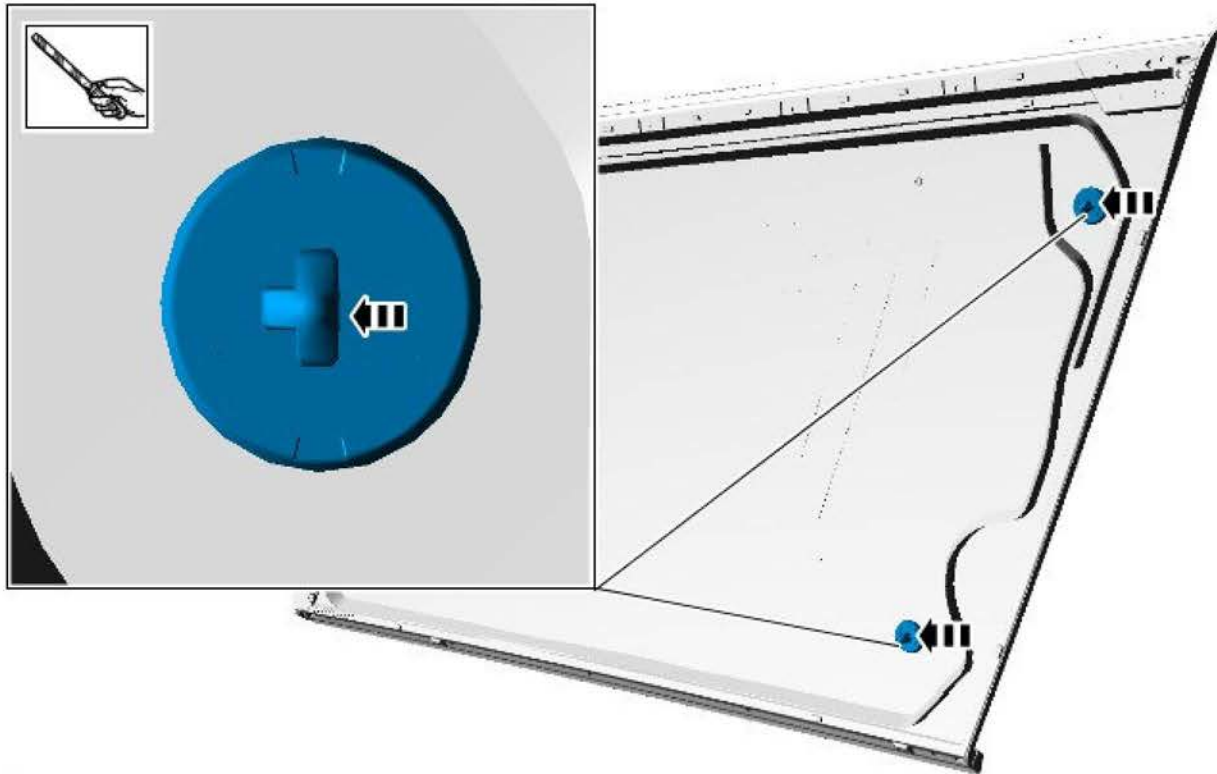
Using a suitable tool, dress the body panel until the gap between the body panel and reinforcement panel has been closed.



E191467


- 8.** Place rear quarter window in it's location without adhesive and check that the alignment specifications can be achieved.
  1. If the alignment specifications cannot be achieved, go to Step 7.
  2. If the alignment specifications can be achieved, go to Step 9.
  
- 9.** Using a suitable tool, trim the window location pins on the edge closest to the front of the vehicle until the desired gap is achieved.





E191474

10.  **NOTE: A vehicle technician must be present to make sure that the window is located correctly so that the alignment specifications are met.**

 **NOTE: Secure the window with tape during the curing time to make sure the desired position is maintained.**

With the assistance of a vehicle window replacement technician, install the rear quarter window.

11. Install the C-pillar Upper Trim Panel (see TOPIx Workshop Manual section 501-05: Interior Trim and Ornamentation).
12. Install the D-pillar Trim Panel (see TOPIx Workshop section 501-05: Interior Trim and Ornamentation).
13. Install the Rear Quarter Panel Moulding (see TOPIx Workshop Manual section 501-08: Exterior Trim and Ornamentation).
14. Apply slip coating (as supplied in the Squeak & Rattle kit) to the margin seal flock coating and front edge of the rear quarter window.
1. Apply 6-8 times, allowing approximately 5 minutes between applications for each coat to dry.
15. Visually check the condition of the rear door upper seal.
1. If the rear door upper seal is not damaged, return the vehicle to the customer.
  2. If the rear door upper seal is damaged, go to Step 16.

16.  **NOTE: Rear right door shown; rear left similar.**

Replace the rear upper door seal.

