

1 10 17-16



## Service Information Bulletin

SUBJECT	DATE
Engine Model and Serial Number Designation	October 2016

### Additions, Revisions, or Updates

Publication Number / Title	Platform	Section Title	Change
DDC-SVC-MAN-0189	EPA07/10/ GHG14 DD Platform	Engine Model and Serial Number Designation	Added HDEP Model Breakdown Table
DDC-SVC-MAN-0080			
DDC-SVC-MAN-0075			



13400 Outer Drive, West, Detroit, Michigan 48239-4001  
 Telephone: 313-592-5000  
[www.demanddetroit.com](http://www.demanddetroit.com)

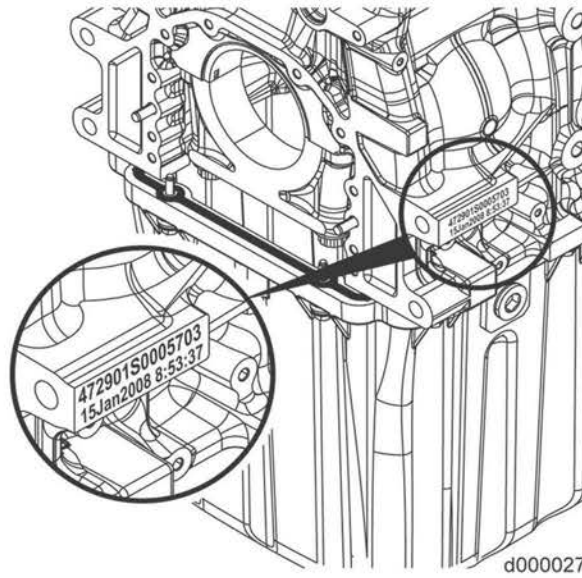
## 2 Engine Model and Serial Number Designation

The following information covers engine model number, serial number and certification label.

### Engine Model and Serial Number

The fourteen-digit engine model and manufacturing serial number is etched on a pad located on the left front of the engine cylinder block, above the date and time of manufacture. Using 472901S0005703 as an example:

- 472 = engine model (DD15)
- 901 = vehicle application (Freightliner)
- S = assembly plant (Detroit™)
- 0005703 = serial number



**Figure 1. Engine Model and Serial Number Location**  
**Engine Model Breakdown**

**Table 1.**

DESCRIPTION	HDEP MODEL BREAKDOWN				
	ENGINE MODEL	DISPLACEMENT	APPLICATION	YEAR	DDEC SERIES
EPA07 DD15	472900S	14.8 L (DD15)	WESTERN STAR	2007 - 09 (EPA07)	VI
EPA07 DD15	472901S	14.8 L (DD15)	FREIGHTLINER		
EPA07 DD15	472902S	14.8 L (DD15)	STERLING		
EPA07 DD15	472907S	14.8 L (DD15)	EXPORT (usually Australia)		
EURO IV DD15	472908S	14.8 L (DD15)	EXPORT Euro IV (usually Chile/ Mexico)		
EPA07 DD13	471901S	12.8 L (DD13)	FREIGHTLINER		
EPA07 DD13	471910S	12.8 L (DD13)	STERLING		
EPA07 DD13	471915S	12.8 L (DD13)	EXPORT (usually Australia)		

HDEP MODEL BREAKDOWN					
DESCRIPTION	ENGINE MODEL	DISPLACEMENT	APPLICATION	YEAR	DDEC SERIES
EPA10 DD15	472903S	14.8 L (DD15)	FREIGHTLINER	2010 - 12 (EPA10)	10
EPA10 DD15	472904S	14.8 L (DD15)	WESTERN STAR		
EPA10 DD13	471903S	12.8 L (DD13)	FREIGHTLINER		
EPA10 DD13	471905C	12.8 L (DD13)	COACH (EVOBUS)		
EPA10 DD13	471911S	12.8 L (DD13)	WESTERN STAR		
EPA10 DD13	471913S	12.8 L (DD13)	FREIGHTLINER M2		
EPA10 DD13	471914S	12.8 L (DD13)	FIRETRUCK		
EPA10 DD13	471916S	12.8 L (DD13)	OSHKOSH		
EPA10 DD13	471917S	12.8 L (DD13)	COACH (MCI & VAN HOOL)		
EPA10 DD13	471920S	12.8 L (DD13)	MTU		
EPA10 DD16	473901S	15.6 L (DD16)	FREIGHTLINER		
EPA10 DD16	473902S	15.6 L (DD16)	WESTERN STAR		
EPA10 GHG14 DD15	472906S	14.8 L (DD15)	ASSYMETRIC TURBO (AT)		
EPA10 GHG14 DD15	472909S	14.8 L (DD15)	TURBOCOMPOUND (TC)		
EPA10 GHG14 DD13	471927S	12.8 L (DD13)	FUEL ECON PACKAGE 0 (FEO)		
EPA10 GHG14 DD13	471932C	12.8 L (DD13)	COACH (EVOBUS)		
EPA10 GHG14 DD13	471933S	12.8 L (DD13)	PIERCE FIRETRUCK		
EPA10 GHG14 DD13	471934S	12.8 L (DD13)	COACH (MCI & VAN HOOL)		
EPA10 GHG14 DD13	471935S	12.8 L (DD13)	MTU		
EPA10 GHG14 DD16	473908S	15.6 L (DD16)	TURBOCOMPOUND (TC)		
EPA10 GHG17 DD15	472910S	14.8 L (DD15)	ASSYMETRIC TURBO (AT)	2016 (EPA10 GHG17)	13
EPA10 GHG17 DD13	471928S	12.8 L (DD13)	TRUCK (FE1)		
EPA10 GHG17 DD13	471938C	12.8 L (DD13)	COACH (EVOBUS)		
EPA10 GHG17 DD13	471940S	12.8 L (DD13)	PIERCE FIRETRUCK		
EPA10 GHG17 DD13	471941S	12.8 L (DD13)	MCI, VAN HOOL, OSHKOSH, FCCC		
EPA10 GHG17 DD13	471942S	12.8 L (DD13)	MTU		
EPA10 GHG17 DD16	473910S	15.6 L (DD16)	TURBOCOMPOUND (TC)		

#### ***Motor Control Module and Engine Serial Number***

The Motor Control Module (MCM) part number and Engine Serial Number (ESN) are located on the MCM label.



**Figure 2. Motor Control Module Label**  
*Engine Certification Label*

An engine certification label is attached to the engine rocker cover. This label certifies the engine conforms to federal and state emissions regulations for its application. It gives the operating conditions under which certification was made.

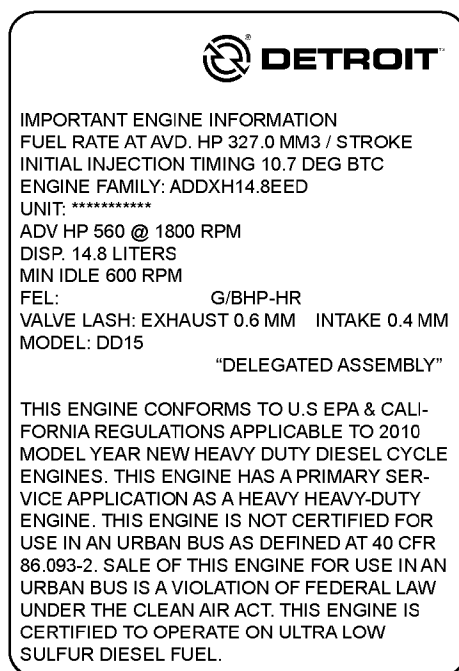
The following illustration is an EPA07 engine certification label.

Important Engine Information				
This engine conforms to U.S. EPA and California regulations applicable to 2007 model year new heavy duty engines. This engine has a primary intended service application as a heavy duty engine. This engine is not certified for use in an urban bus as defined at 40 CFR 86.093 2. Sale of this engine for use in an urban bus is a violation of federal law under the Clean Air Act.				
This engine is certified to operate on ultra low sulfur diesel fuel.				
Fuel rate at adv. Hp	mm3/stroke	Adv. Hp	@	rpm
Initial injection timing	deg. Btc	Disp.		Valve Lash
Engine Family		Min. Idle		Exhaust
Model		Mfg. Date		Intake
Unit:				

47716

**Figure 3. EPA07 Engine Certification Label**

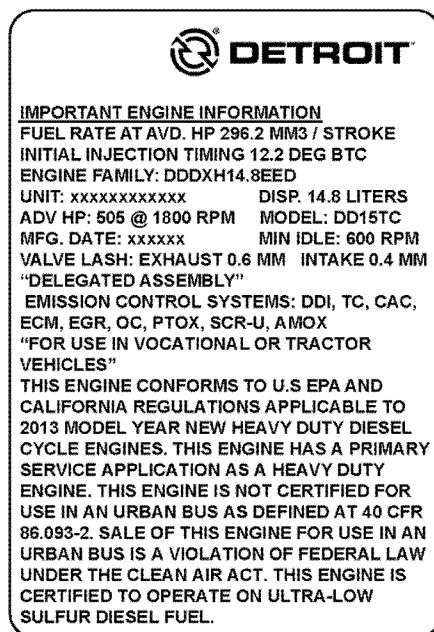
The following illustration is an EPA10 engine certification label.



d990003b

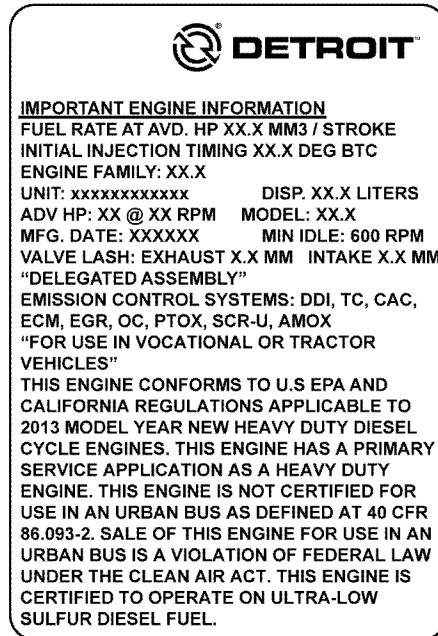
#### Figure 4. EPA10 Engine Certification Label

The following illustrations are for GHG14 and GHG17 engine certification labels.



d990003c

#### Figure 5. GHG14 Engine Certification Label



d990003d

Figure 6. GHG17 Engine Certification Label