

November 30, 2016

05226 Version 1

Product Update: Center High Mount Stop Light Cover

AFFECTED VEHICLES

Year	Model	Trim	VIN Range
2016	Civic	ALL 2-Door	Check the iN VIN status for eligibility

BACKGROUND

The adhesive applied to the center high mount stop light cover (high mount cover) isn't strong enough and the cover may come loose and hang down.

CUSTOMER NOTIFICATION

Owners of affected vehicles will be sent a notification of this campaign.

Do an iN VIN status inquiry to make sure the vehicle is shown as eligible.

Some vehicles affected by this campaign may be in your new or used vehicle inventory. Repair these vehicles before they are sold.

CORRECTIVE ACTION

Install a new high mount cover.

PARTS INFORMATION

Part Name	Part Number	Quantity
Center High Mount Stop Light Cover Repair Kit (Includes cover assembly, cover bracket (2), and window template)	06731-TBG-305	1

NOTE:

- The repair kit is a drop-shipped item and may take several days to receive your order.
- These kits cannot be returned to American Honda.

REQUIRED MATERIALS

Part Name	Part Number	Quantity
Center High Mount Stop Light Cover Adhesive Kit (Includes urethane adhesive, mixing nozzle, and primer)	06732-TBG-305	One kit repairs 5 vehicles.

NOTE: The adhesive kit is a drop-shipped item and may take several days to receive your order.

RECOMMENDED MATERIALS

Part Name	Part Number	Quantity
3M General Purpose Adhesive Cleaner	08987 (Commercially available)	One can of cleaner repairs 100 vehicles.

CUSTOMER INFORMATION: The information in this bulletin is intended for use only by skilled technicians who have the proper tools, equipment, and training to correctly and safely maintain your vehicle. These procedures should not be attempted by "do-it-yourselfers," and you should not assume this bulletin applies to your vehicle, or that your vehicle has the condition described. To determine whether this information applies, contact an authorized Honda automobile dealer.

SPECIAL TOOLS

Tool Name	Part Number	Quantity
3M EPX Urethane Applicator	MMM50004 (Commercially Available)	1
1:1 Plunger	MMM50005 (Commercially Available)	1

NOTE: The plunger and applicator tools were recently shipped to all dealers. The tools were addressed to the service manager. Additional tools are available for purchase from your 3M distributor.

WARRANTY CLAIM INFORMATION

Operation Number	Description	Flat Rate Time	Defect Code	Symptom Code	Template ID	Failed Part Number
7141E0	Replace the high mount cover using new repair procedure.	0.5 hr	6HM00	KD200	16-099A	34273-TBG-A01

REPAIR PROCEDURE

NOTE:

- Make sure you work in a well ventilated area.
 - The optimum temperature for working with the adhesive is between 65-85°F. If needed, bring the vehicle inside and let it warm up or cool down to the ambient temperature before attaching the new brackets.
1. Remove the high mount cover. Do not reuse it.
 - If the high mount cover is attached to the vehicle, carefully pull down on the cover to release the 2 clips from the roof and glass.
 - If the cover is already hanging, remove it by carefully pulling down on the cover to release the 2 clips.

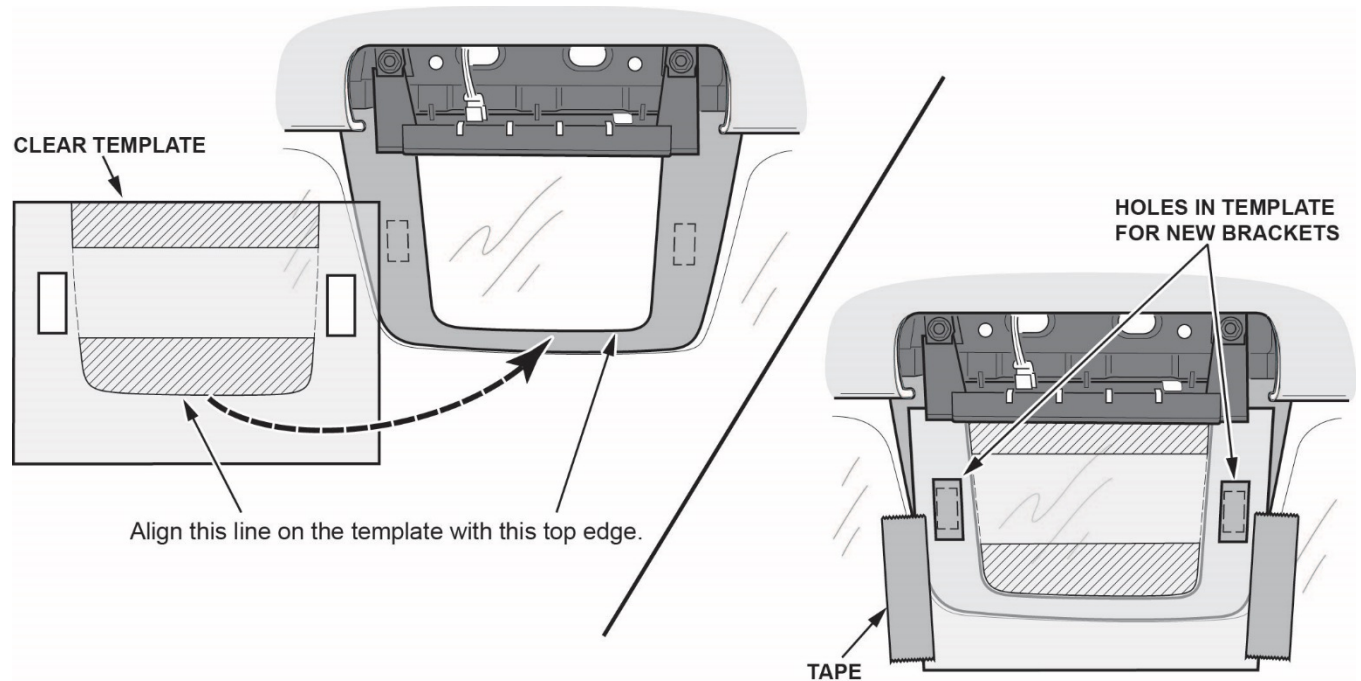


2. Carefully remove any remaining adhesive pad and/or adhesive residue from the rear glass using 3M General Purpose Adhesive Cleaner and a clean towel.

NOTE: Make sure you don't damage the black ceramic area on the rear window. If you need to scrape off the adhesive, use a suitable plastic tool.

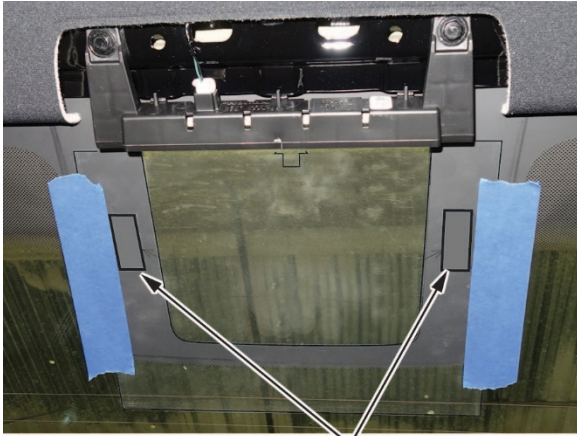


3. Align the template included in the kit with the bottom of the blacked out area on the rear glass and secure it with masking tape.

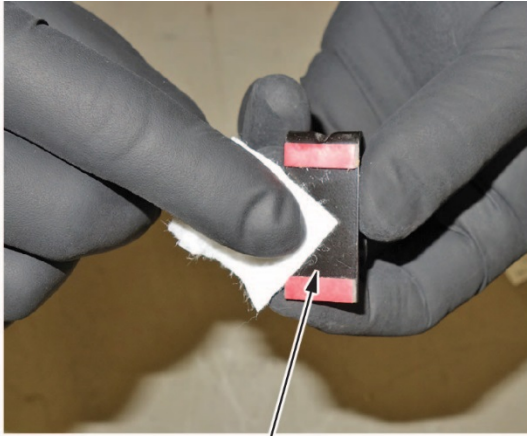


4. Cover the rear seat and rear tray with paper or shop rags to protect the vehicle from any primer drips.

5. Clean the rear glass mounting locations and the mounting side of the new cover brackets using isopropyl alcohol and a clean lint-free cloth.



Clean the mounting locations.



Clean the mounting side of the new cover brackets.

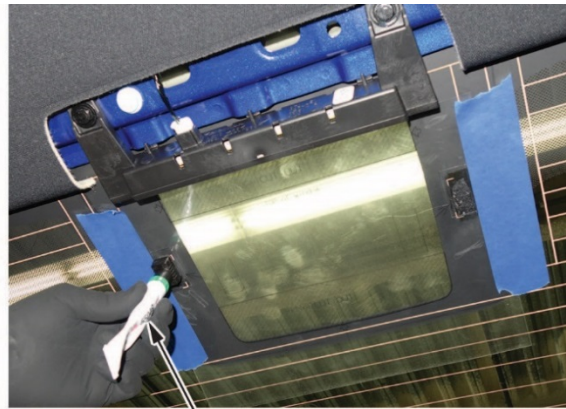
6. Apply the Dow 5504G primer from the kit to the rear window and cover clamps.

- Prepare the primer applicator by pushing down on the cap, then screw the cap clockwise until it's seated.
- Apply a thin coat of the primer to both of the mounting sides of the new cover brackets and the two mounting positions on the rear glass as indicated by the cutouts in the template.

NOTE: The primer hardens quickly and the single use foam pad may clog because of the primer. You may need to use 1 tube of primer for each side.

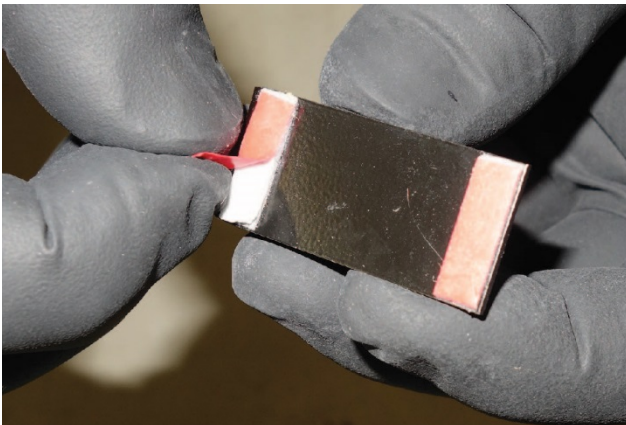


PRIMER



PRIMER

- Let the primer dry for at least 5 minutes.
 - Remove the backing from the cover bracket tabs.
- NOTE: Do not remove the pads attached to the bracket.



7. Apply the adhesive to the bracket. The recommended amount is a circle with a diameter of about 1/2 in. (about the size of a dime and a height of 1/8 in.

NOTE:

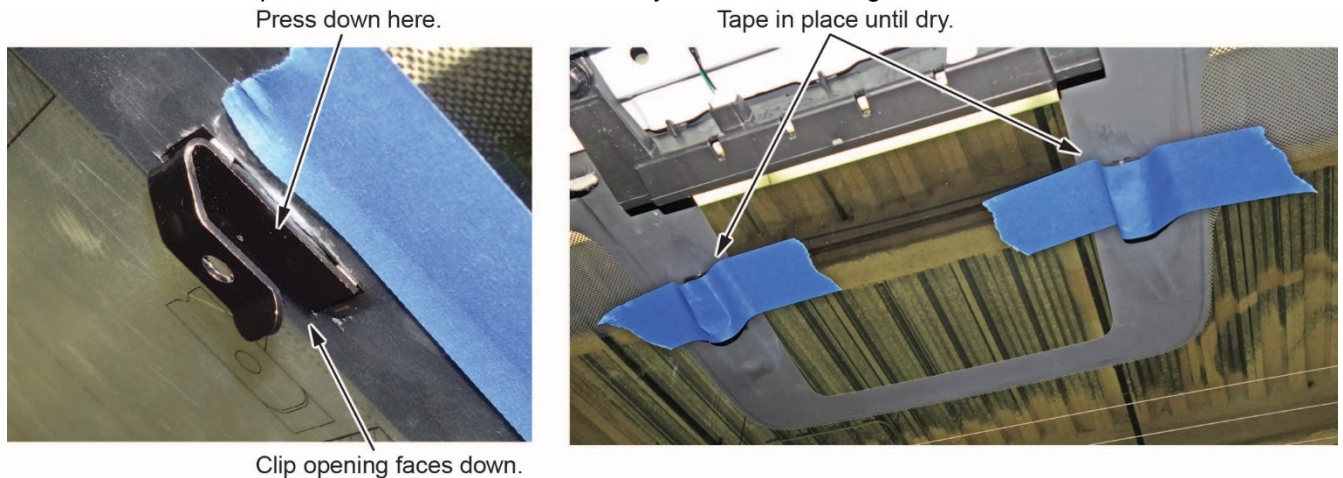
- The adhesive has a working time of about 1 minute.
- Decide if you will apply the adhesive to the cover brackets first or apply the adhesive to one bracket and attach it to the rear window before starting the second. If you apply the adhesive and attach the bracket to the window, you may need to use 2 nozzles to apply the adhesive to both brackets.



8. Attach the bracket.

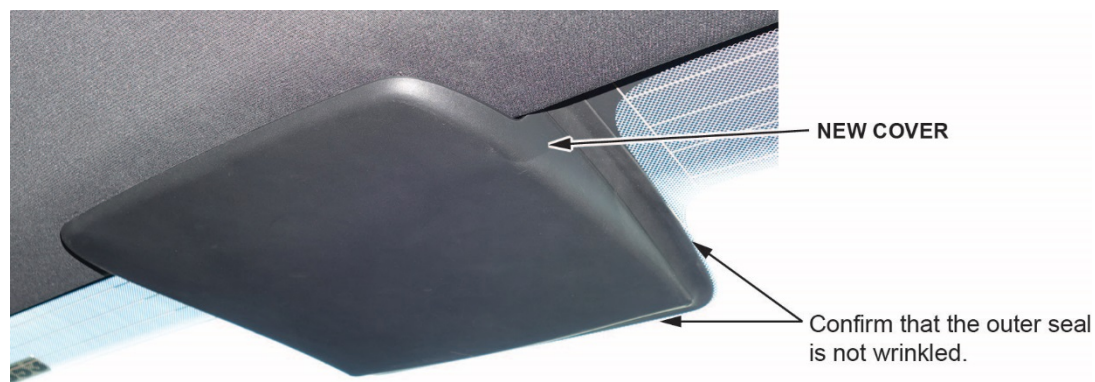
- Make sure the opening of the bracket faces down as shown.
- Press on the contacting surface of the clip, not the open part of the bracket because you could damage it.
- Once the clips are firmly in place, remove the template, making sure not to move the bracket.
- Secure the clips in place with a piece of masking tape so the clip won't move before the adhesive dries.
- Make sure the adhesive dries for **at least 1 hour before installing the cover**.

NOTE: If all these steps are not followed, the cover may detach from the glass.



9. Install the new cover from the kit. Place the cover low on the glass and slide it up into place over the cover brackets, then install the 2 clips in the headliner area.

10. Check that the seal is not damaged or deformed from installation. If it's not seated properly, use a small trim tool to set the seal properly.



END