

January 8, 2016

02823 Version 2

Product Update: 2015–16 Fit Door Handle BracketSupersedes 15-088, dated December 22, 2015, to revise the information highlighted in **yellow****AFFECTED VEHICLES**

Year	Model	Trim	VIN Range
2015–16	Fit	ALL	Check the iN VIN status for eligibility.

REVISION SUMMARY

- Under WARRANTY CLAIM INFORMATION, the template ID was removed from one labor operation number.
- Several notes were added in the REPAIR PROCEDURES to spray light coats of Nox-Rust; avoid heavy spraying.

BACKGROUND

A non-galvanized door handle bracket located inside the door was installed during manufacturing and may be susceptible to corrosion.

NOTE: There is a similar product update for the 2016 HR-V. **Make sure you follow the correct bulletin** because the **Fit replaces all 4 door brackets** where the HR-V bulletin only replaces the front passenger's door bracket.

CUSTOMER NOTIFICATION

Owners of affected vehicles will be sent a notification of this campaign.

Do an iN VIN status inquiry to make sure the vehicle is shown as eligible.

Some vehicles affected by this campaign may be in your new or used vehicle inventory. Repair these vehicles before they are sold.

CORRECTIVE ACTION

Inspect the door for corrosion and if there is no corrosion present, replace the door handle bracket on all 4 doors. If corrosion is present, remove the corrosion before replacing the door handle bracket on all 4 doors.

RECOMMENDED MATERIALS

Part Name	Part Number	Quantity
Scotch-Brite Non-Scratch Scour Pads (Cut into 1 inch squares – each square will repair 1 vehicle.)	Commercially available	1
Nox-Rust®	08732-9020	1 (One can repairs 35 vehicles.)

PARTS INFORMATION

Part Name	Part Number	Quantity
Door Handle Bracket Kit (includes 2 front door brackets, 2 rear door brackets, 2 front door clips and 2 rear door clips)	06721-T5R-A01	1

NOTE: The clips are only used when you remove the outer door handle.

CUSTOMER INFORMATION: The information in this bulletin is intended for use only by skilled technicians who have the proper tools, equipment, and training to correctly and safely maintain your vehicle. These procedures should not be attempted by "do-it-yourselfers," and you should not assume this bulletin applies to your vehicle, or that your vehicle has the condition described. To determine whether this information applies, contact an authorized Honda automobile dealer.

WARRANTY CLAIM INFORMATION

NOTE: When uploading photos of the affected areas, make sure to select PH from the sublet drop down menu. Selecting PH automatically pays 0.1 hr to photograph the vehicle and upload the photos to the warranty claim.

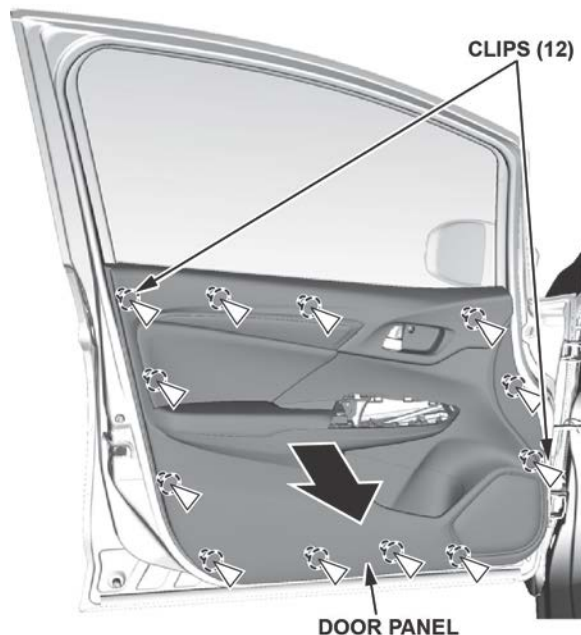
Operation Number	Description	Flat Rate Time	Defect Code	Symptom Code	Template ID	Failed Part Number
8311C3	Replace the door handle bracket on all 4 doors.	1.1 hrs	6BC00	JW300	15-088A	72170-T5A-000
8310B0	Replace the door handle bracket on all 4 doors and clean the corrosion from the door – PHOTOS REQUIRED (4).	1.5 hrs	6BC00	JW300	N/A	72170-T5A-000
8310B1	Heavy corrosion – inspect the vehicle only and sublet the vehicle to a body shop to repair it – PHOTOS REQUIRED (4).	0.4 hr	6BC00	JW300	N/A	72170-T5A-000
Reimbursement for the body shop sublet must be submitted on the same claim with the LON listed above, 8310B1. To submit the sublet, select the B2 sublet code from the drop down menu in the sublet information section of the claim template. Make sure you include the sublet amount and the invoice number.						

Skill Level: Repair Technician

INSPECTION PROCEDURE – DRIVER’S DOOR

NOTE: Make sure the window is all the way up so you can access the door handle area.

1. Remove the driver’s door panel.

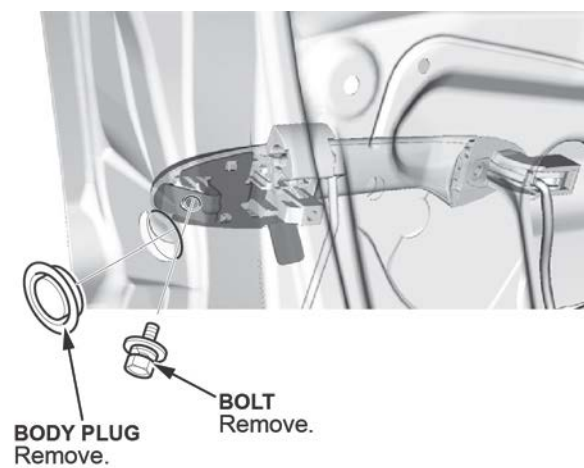


2. Remove the plastic sheet as needed to access the door handle area.

NOTE: Apply blue tape over the sealant to avoid making a mess.



3. Remove the body plug and bolt as shown.



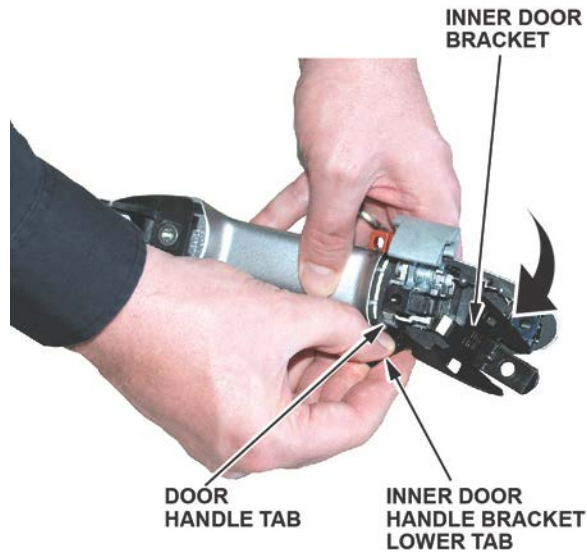
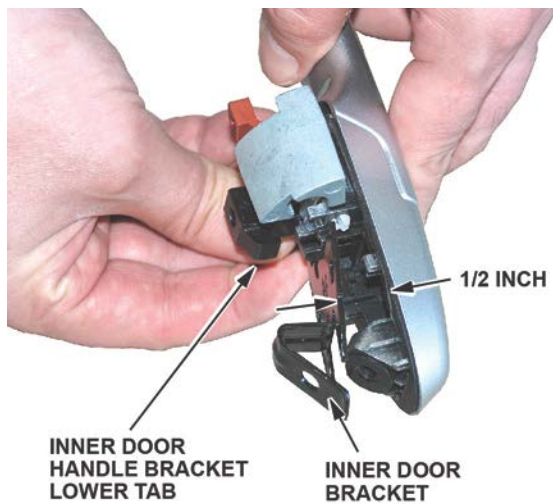
4. Remove the door handle bracket:

Refer to the video for more detailed procedures on removing the front door handle bracket.

“HOW TO REMOVE DOOR HANDLE BRACKET” VIDEO



- Holding the door handle bracket at the lower tab, gently twist it so the outside edge of the door handle bracket lifts about half an inch.



- Gently pull and rotate the bracket down to remove it without breaking the door handle tab.

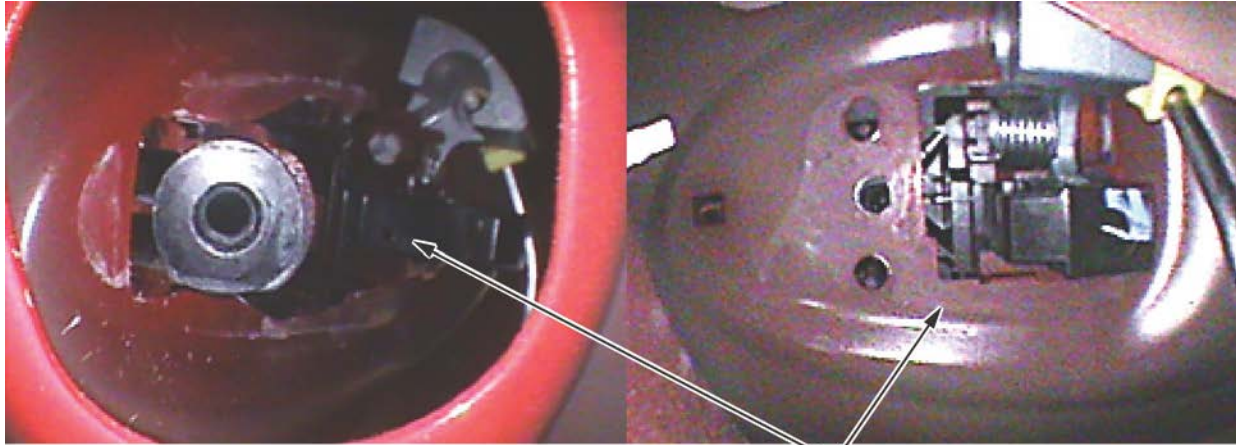
NOTE:

- Be careful not to damage the tab on the outer door handle. If the tab is broken, you'll need to replace the door handle.
- Do not remove the outer door handle from the vehicle.
- The images show the door handle bracket removal process with the door handle out of the vehicle for clarity.

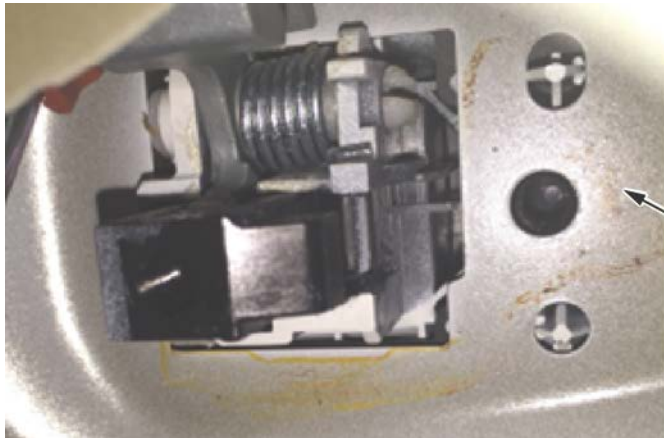
5. Using a flashlight, check the driver's side inner door for any corrosion. If there is any corrosion present on the driver's door, photograph it. You will need at least 4 photos (one of each door) to submit a warranty claim. If there is no corrosion on the door, photos are not required.

NOTE: Do not remove the outer door handle.

- If there is light corrosion as shown below or no corrosion present, go to REPAIR PROCEDURE.

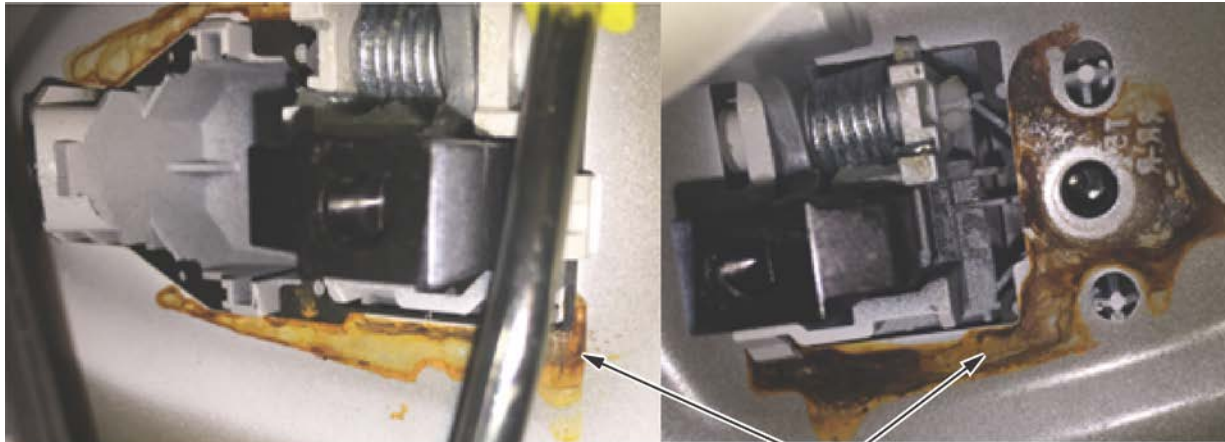


No corrosion.



Light corrosion OK.

- If there is moderate corrosion as shown on the inner door, go to CORROSION REMOVAL PROCEDURE.



Moderate corrosion.

- **In the rare event there is heavy corrosion present**, such as when there is pitting and blistering on the door panel, the rust can't be easily removed and will require a body shop to repair the damage. Reinstall the original bracket in the door, then reinstall the door panel. Place the door handle bracket kit inside the vehicle with a copy of this bulletin and a note to the body shop to reinstall the new parts after repairing the doors. Submit a warranty claim for inspection only.

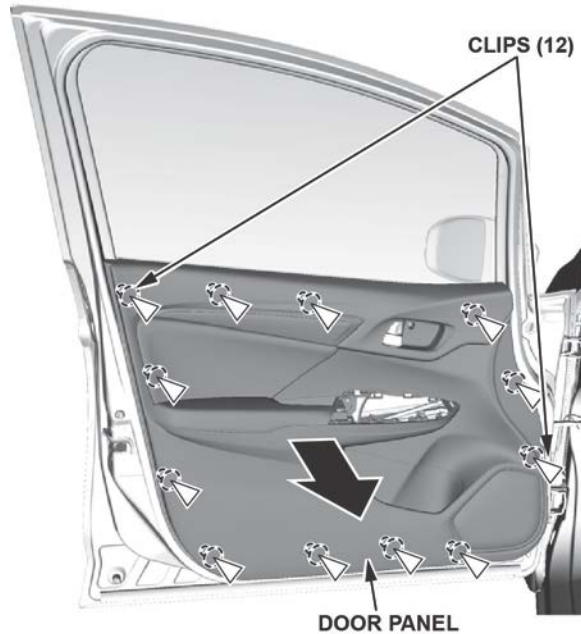
REPAIR PROCEDURE

Front Door

NOTE:

- Make sure the window is all the way up so you can access the door handle area.
- The driver's inner door handle bracket was removed in the inspection; for the driver's door, go to step 5.

1. Remove the door panel.

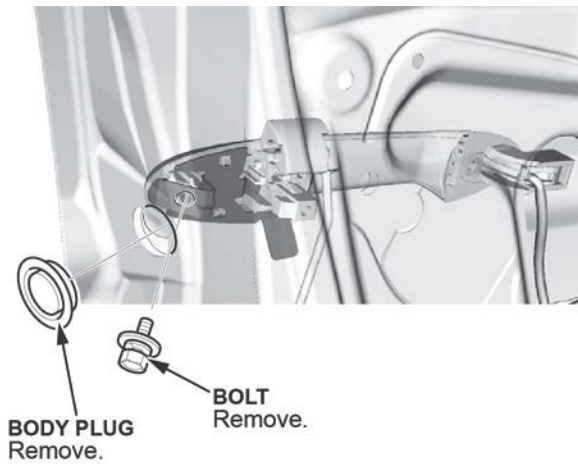


2. Remove the plastic sheet as needed to access the door handle area.

NOTE: Apply blue tape over the sealant to prevent making a mess.



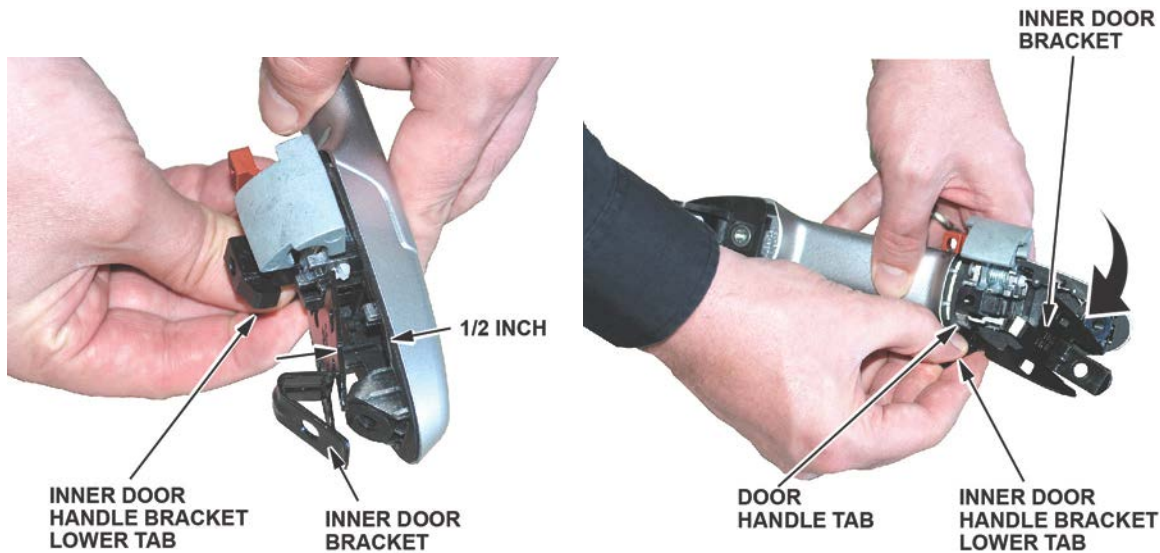
3. Remove the body plug and bolt as shown.



4. Remove the inner door bracket:

Refer to the video for more detailed procedures on removing the front door handle bracket.

- Holding the door bracket at the lower tab, gently twist it so the outside edge of the inner door bracket lifts about half an inch.



- Gently pull and rotate the bracket down to remove it without breaking the door handle tab.

NOTE:

- Be careful not to damage the tab on the outer door handle. If the tab is broken, you'll need to replace the door handle.
- Do not remove the outer door handle from the vehicle.
- The images show the door handle bracket removal process with the door handle out of the vehicle for clarity.

5. Spray the inner door area around the door handle with Nox-Rust. Also have an assistant pull on the door handle to make sure the Nox-Rust covers the area behind the mechanism.

NOTE:

- Avoid spraying Nox-Rust onto the door handle mechanism. To avoid this, apply Nox-Rust through the openings as shown below using the nozzle supplied with the can. Point the nozzle away from the mechanism and apply in short bursts.
- **You only need to spray enough Nox-Rust to cover the handle mechanism. Avoid spraying heavy amounts of Nox-Rust.**

Spray Nox-Rust in these openings.



Apply Nox-Rust behind door handle mechanism.



Make sure to hold the door handle against the door.



Have an assistant open the door handle.

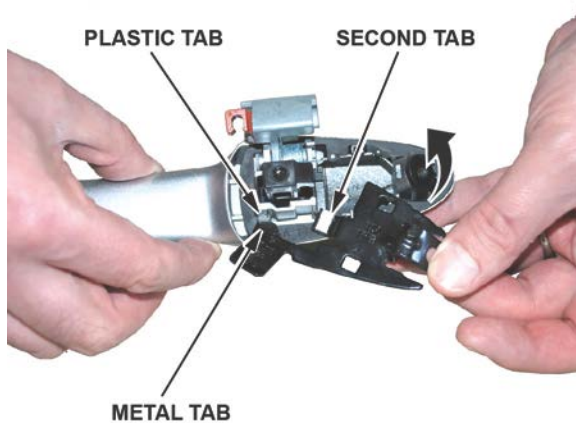
6. Coat the new door handle bracket with Nox-Rust.

NOTE: Avoid spraying heavy amounts of Nox-Rust.

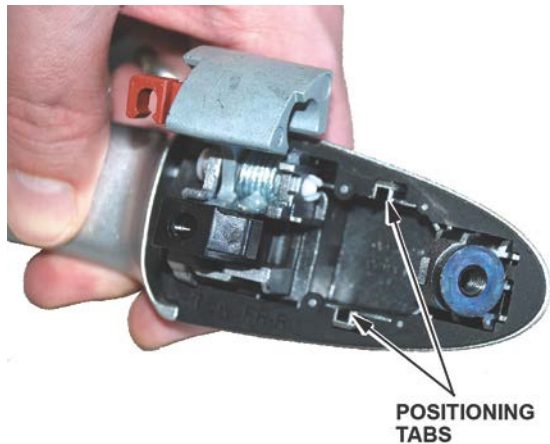


7. Install the new door handle bracket:

- Place the bracket as shown.



- Slide the metal tab under the plastic tab, and keep the bracket flush to the inner door so the second tab slides into position. The only time you should have to lift the bracket is to clear part of the door handle.
- Make sure the bracket and the positioning tabs are lined up.



8. Reinstall the bolt and body plug. Torque the bolt to **9.4 N·m (6.9 lb-ft)**.
9. Apply a second coating or Nox-Rust to the assembled components.

NOTE: Avoid spraying Nox-Rust onto the door handle mechanism. **Also avoid spraying heavy amounts of Nox-Rust.**



10. Clean any overspray of Nox-Rust from the outer door panel and door handle (if necessary).
11. Check that the door handle works properly.
12. Reinstall the plastic sheet.

NOTE: Make sure there is a complete seal around the door. If there are any gaps, water can leak in.

13. Reinstall the door panel in the reverse order of removal.
14. Repeat steps 1 thru 13 for the front passenger's door.

NOTE: You do not need to inspect the inner door panel for corrosion again. If moderate or heavy corrosion was present on the driver's door, all the doors must be cleaned or repaired.

Rear Door

1. Remove the rear door panel.

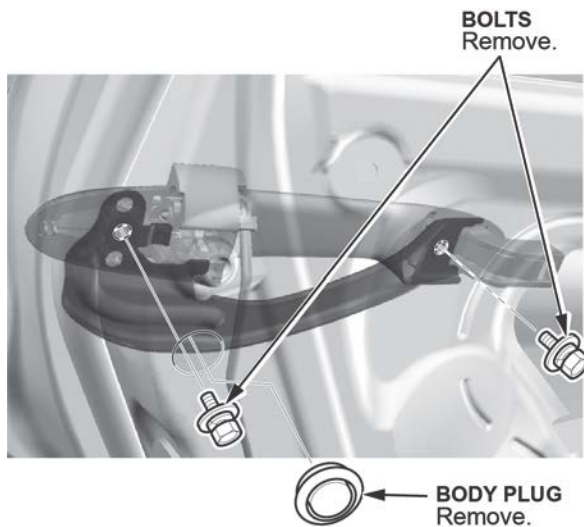


2. Remove the plastic sheet as needed to access the door handle area.

NOTE: Apply blue tape over the sealant to prevent making a mess.



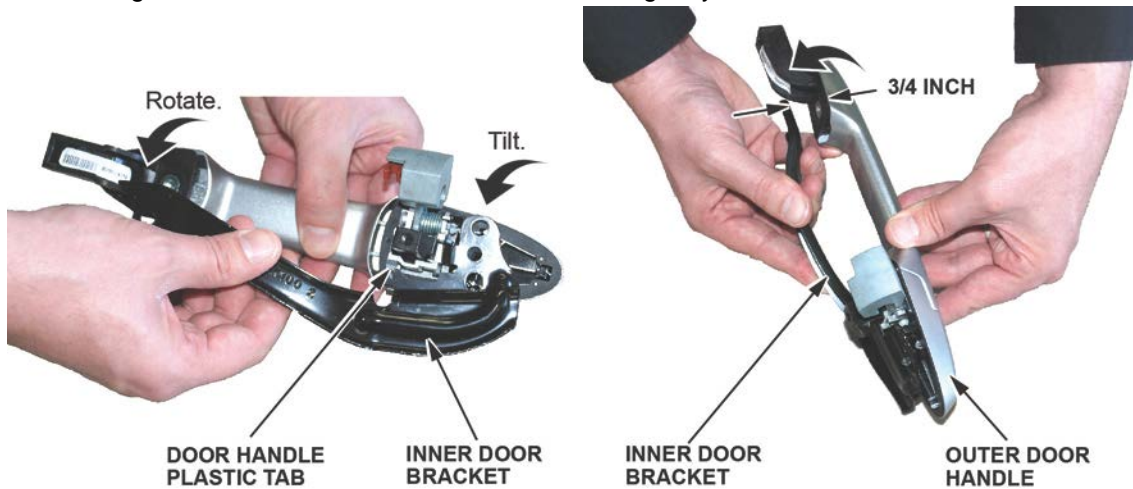
3. Remove the body plug and bolts as shown.



4. Remove the door handle bracket:

Refer to the video for more detailed procedures on removing the rear door handle bracket.

- Holding the door handle bracket at the front area, gently lift it about 3/4 of an inch.



- Gently pull and rotate the bracket down to remove it without breaking the door handle plastic tab.

NOTE:

- Be careful not to damage the tab on the outer door handle. If the tab is broken, you'll need to replace the door handle.
- Do not remove the outer door handle from the vehicle.

5. If there was moderate corrosion on the driver's door, go to CORROSION REMOVAL PROCEDURE.

6. Spray the inner door area around the door handle with Nox-Rust.

NOTE:

- Avoid spraying Nox-Rust onto the door handle mechanism. To avoid this, apply Nox-Rust through the openings as shown below using the nozzle supplied with the can. Point the nozzle away from the mechanism and apply in short bursts.
- You only need to spray enough Nox-Rust to cover the area around the handle mechanism. **Avoid spraying heavy amounts of Nox-Rust.**

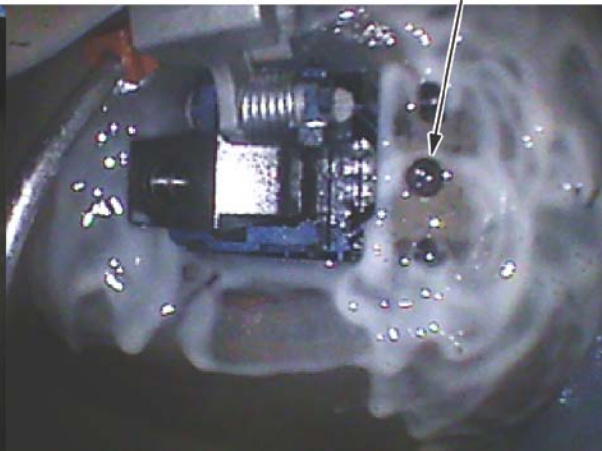
Spray Nox-Rust in these openings.



Rear mounting location.

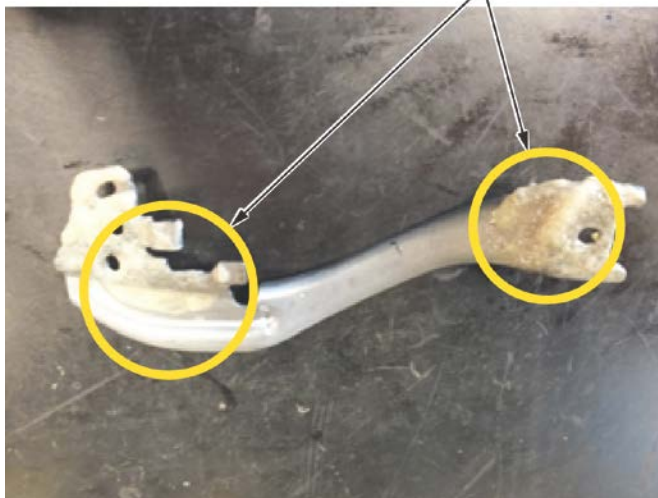


Front mounting location.



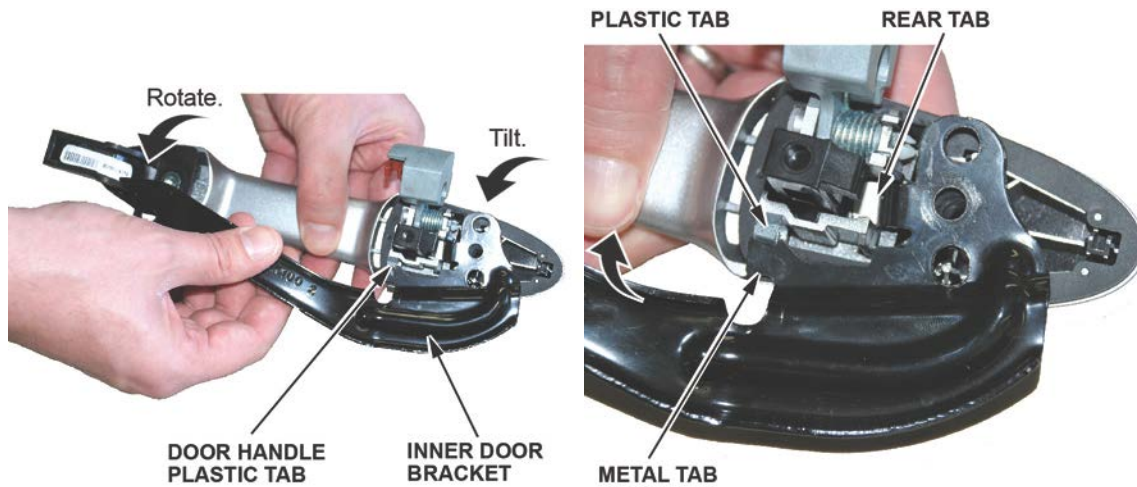
7. Spray the new door handle bracket with Nox-Rust.

Spray Nox-Rust on these parts of the bracket.

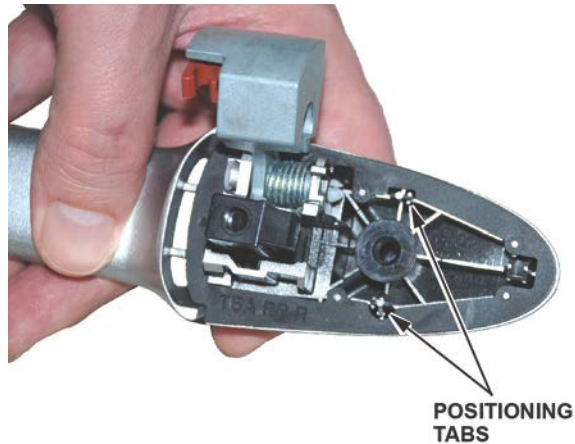


8. Install the new door handle bracket:

- Place the bracket as shown.



- Slide the rear part of the bracket into place with the front pointing down.
- Once the rear tab is in place, rotate the bracket up so that the metal tab slides under the plastic tab. Also, make sure the bracket is properly positioned on the positioning tabs.



- Align the front part of the bracket with the bolt hole.

9. Reinstall the bolts and the body plug. Torque the bolts to **9.4 N·m (6.9 lb-ft)**.

10. Apply a second coating or Nox-Rust to the assembled components.

NOTE: Avoid spraying Nox-Rust onto the door handle mechanism. Also avoid spraying heavy amounts of Nox-Rust.



11. Clean any overspray of Nox-Rust from the outer door panel and door handle (if necessary).
12. Check that the door handle works properly.
13. Reinstall the plastic sheet.

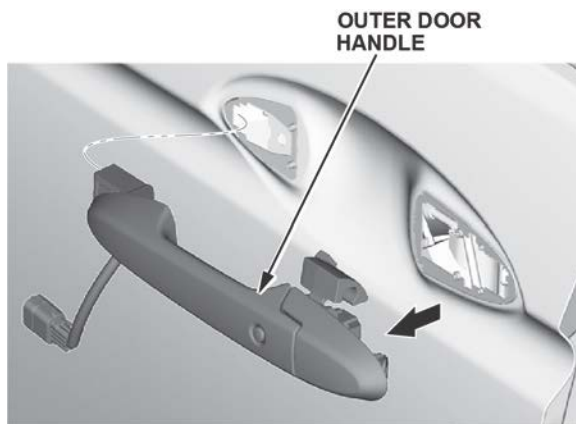
NOTE: Make sure there is a complete seal around the door. If there are any gaps, water can leak in.

14. Reinstall the door panel.
15. Repeat steps 1 thru 14 for the other rear door.

CORROSION REMOVAL PROCEDURE

NOTE: If you find moderate corrosion on the driver's inner door, all 4 doors must be cleaned.

1. **Make sure you take clear photos of the driver's door panel showing the corrosion before the repair.** You will need to submit the photos to support the warranty claim.
2. Remove the outer door handle.



3. Replace the rod clip with a new one.

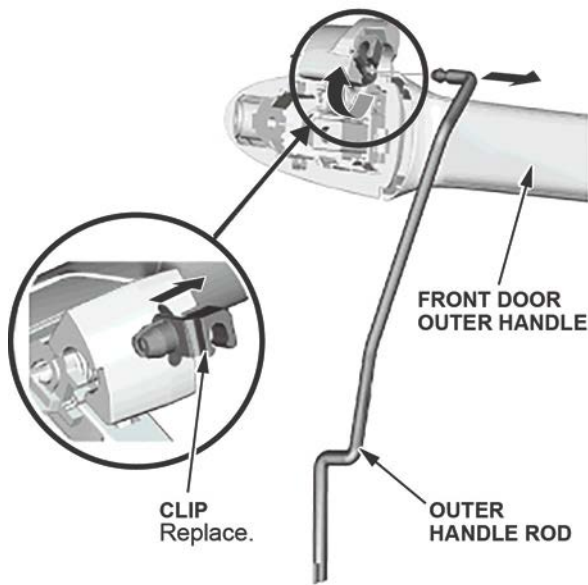


IMAGE NEEDED

4. If there is any corrosion on the outer door panel, remove it with a soft damp cloth.

NOTE: Do not use any abrasive materials like the Scotch-Brite pad on the exterior of the door because you can scratch the paint.

BEFORE



AFTER



A small amount of corrosion is OK.

5. Use masking tape to tape the outside door around the handle area as shown to prevent scratching the clear coat.

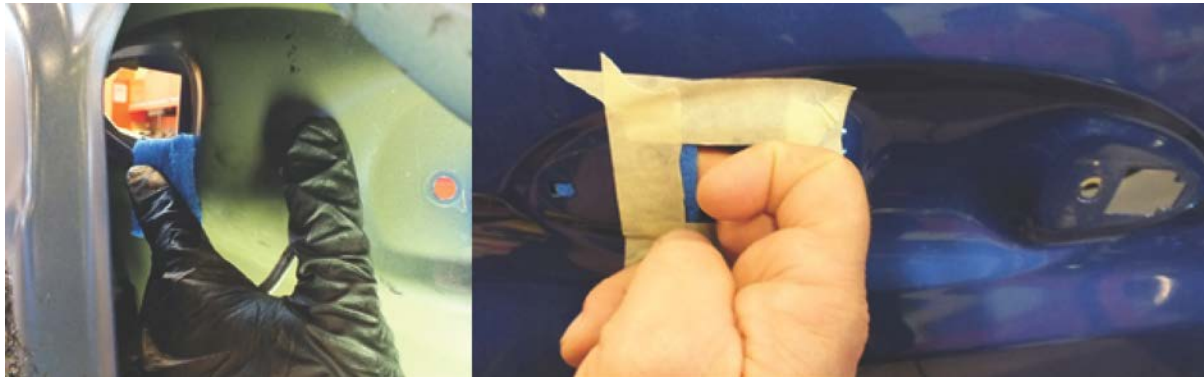


6. Remove the corrosion from the inner door using a 1-inch square piece of Scotch-Brite pad.



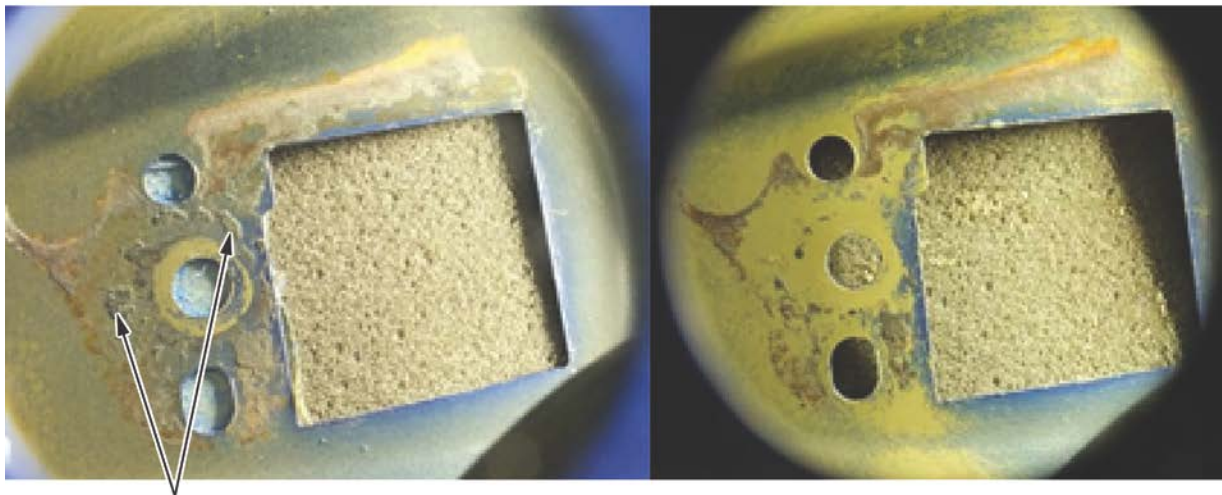
NOTE:

- Only use the recommended non-scratch Scotch-Brite pad. Using any other pad or cleaner could remove the protective layer on the inside of the door.
- The front doors can be cleaned from either the inside or outside.
- The rear doors must be cleaned from the outside as shown because you won't be able to access all the areas from the inside.



7. Make sure enough of the corrosion was removed.

GOOD



This is acceptable, but more cleaning can be done to remove the raised deposit.

8. Spray the inner door area around the door handle and the new inner door handle bracket with Nox-Rust.

NOTE: You only need to spray enough Nox-Rust to cover the area around the door handle opening. **Avoid spraying heavy amounts of Nox-Rust.**



Apply Nox-Rust before
reinstalling the door handle.

9. Reinstall the door handle, then go to the applicable step:

- Front Door – step 7.
- Rear door – step 7.

END