

# TECHNICAL BULLETIN

## JTB00508NAS1

### 15 SEP 2016



© Jaguar Land Rover North America, LLC

NOTE: The information in Technical Bulletins is intended for use by trained, professional Technicians with the knowledge, tools, and equipment required to do the job properly and safely. It informs these Technicians of conditions that may occur on some vehicles, or provides information that could assist in proper vehicle service. The procedures should not be performed by 'do-it-yourselfers'. If you are not a Retailer, do not assume that a condition described affects your vehicle. Contact an authorized Jaguar service facility to determine whether this bulletin applies to a specific vehicle.

### **SECTION: 501-00**

### Water Ingress Into The Footwell

### **AFFECTED VEHICLE RANGE:**

#### **F-TYPE (X152)**

**Model Year:** 2017  
**VIN:** K37656-K40670  
**Assembly Plant:** Castle Bromwich

### **MARKETS:**

NAS

### **CONDITION SUMMARY:**

**Situation:** Water ingress may be evident in the vehicle footwell.

**Cause:** This may be due to body sealer causing a blocked Air Conditioning (A/C) evaporator drain tube, allowing water to enter the vehicle.

**Action:** Should a customer express this concern, follow the Service Instruction below.

### **PARTS:**

T2R12858 Tunnel insulation cover 1

### **TOOLS:**

Refer to Workshop Manual for any required special tools.

### **WARRANTY:**

 **NOTE: Repair procedures are under constant review, and therefore times are subject to change; those quoted here must be taken as guidance only. Always refer to TOPIx to obtain the latest repair time.**

 **NOTE: DDW requires the use of causal part numbers. Labor only claims must show the causal part number with a quantity of zero.**

DESCRIPTION	SRO	TIME (HOURS)	CONDITION CODE	CAUSAL PART
Air Conditioning drain pipe - Unblock	<b>82.91.36</b>	5.1	05	T2R16542

 **NOTE: Normal Warranty procedures apply.**

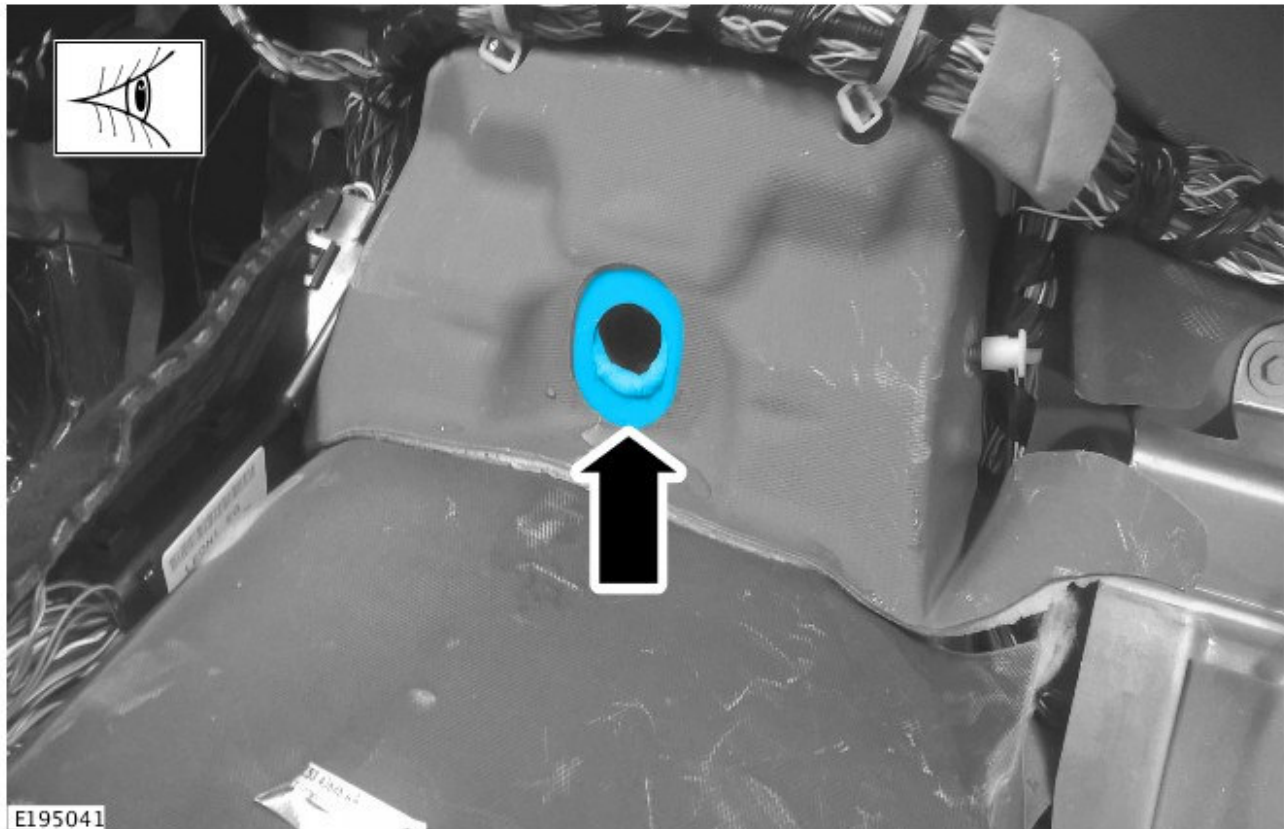
### **SERVICE INSTRUCTION:**

-  **NOTE: Make sure that the water ingress into the footwell is from a blocked Air Conditioning (A/C) evaporator drain tube and not another water leak source.**

Verify water ingress is from a blocked Air Conditioning (A/C) evaporator drain tube.

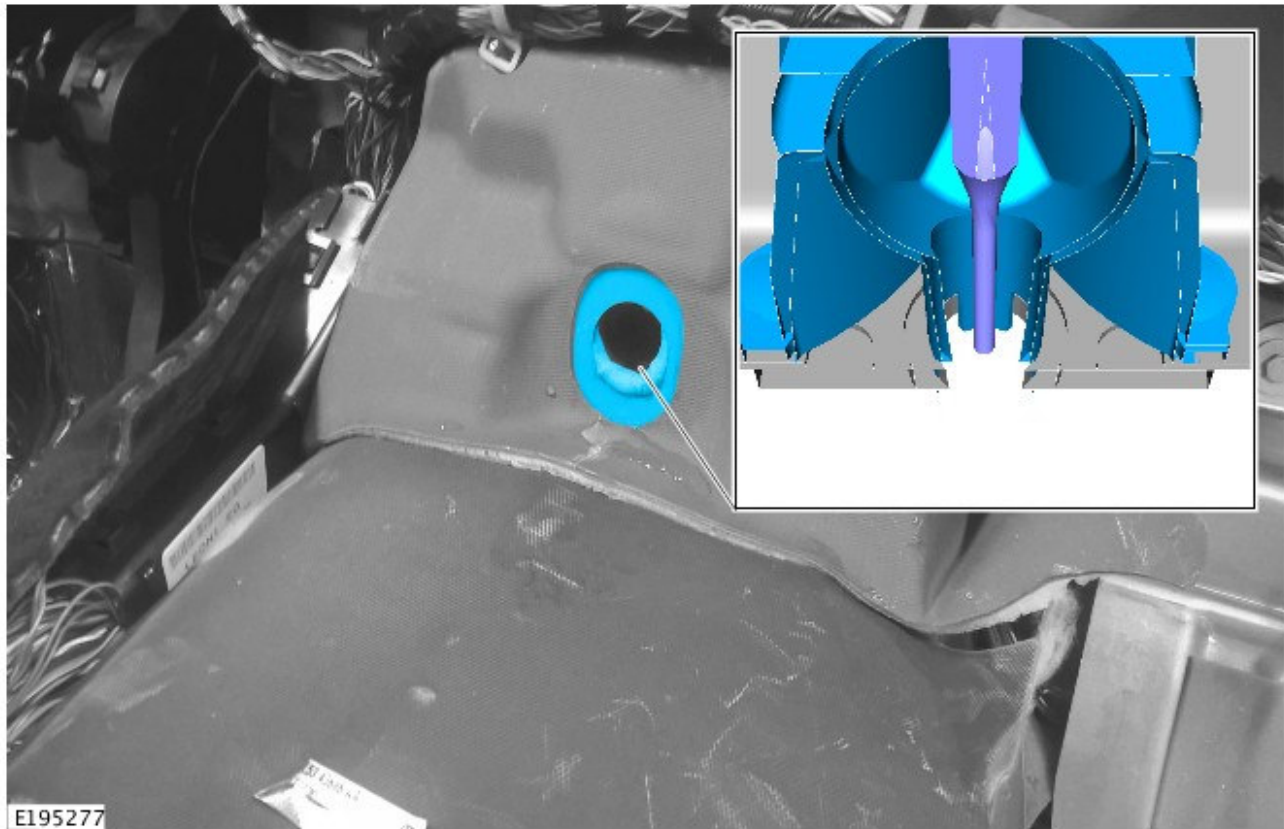
- Start the engine.
- Switch the climate control system ON.


3. Switch the A/C ON; set fan speed to MAX and temperature to LO.
4. After 10 minutes, switch the engine OFF.
5. Check for water dripping underneath the vehicle from the A/C evaporator drain tube.
  - If water is dripping underneath the vehicle from the A/C evaporator drain tube, a blocked A/C evaporator drain tube is not the cause of the customer concern. Further diagnosis is required. Do not continue with this Service Instruction.
  - If water is not dripping underneath the vehicle from the A/C evaporator drain tube, continue to Step 2.
2. Remove the heater core and evaporator core housing (see TOPIX Workshop Manual section 412-01: Climate Control - Heater Core and Evaporator Core Housing).
3. Locate the area shown.



4.  **NOTE: Once the seal has been broken, do not insert the suitable tool any further. Inserting the suitable tool any further into the drain tube may damage the transmission heatshield.**

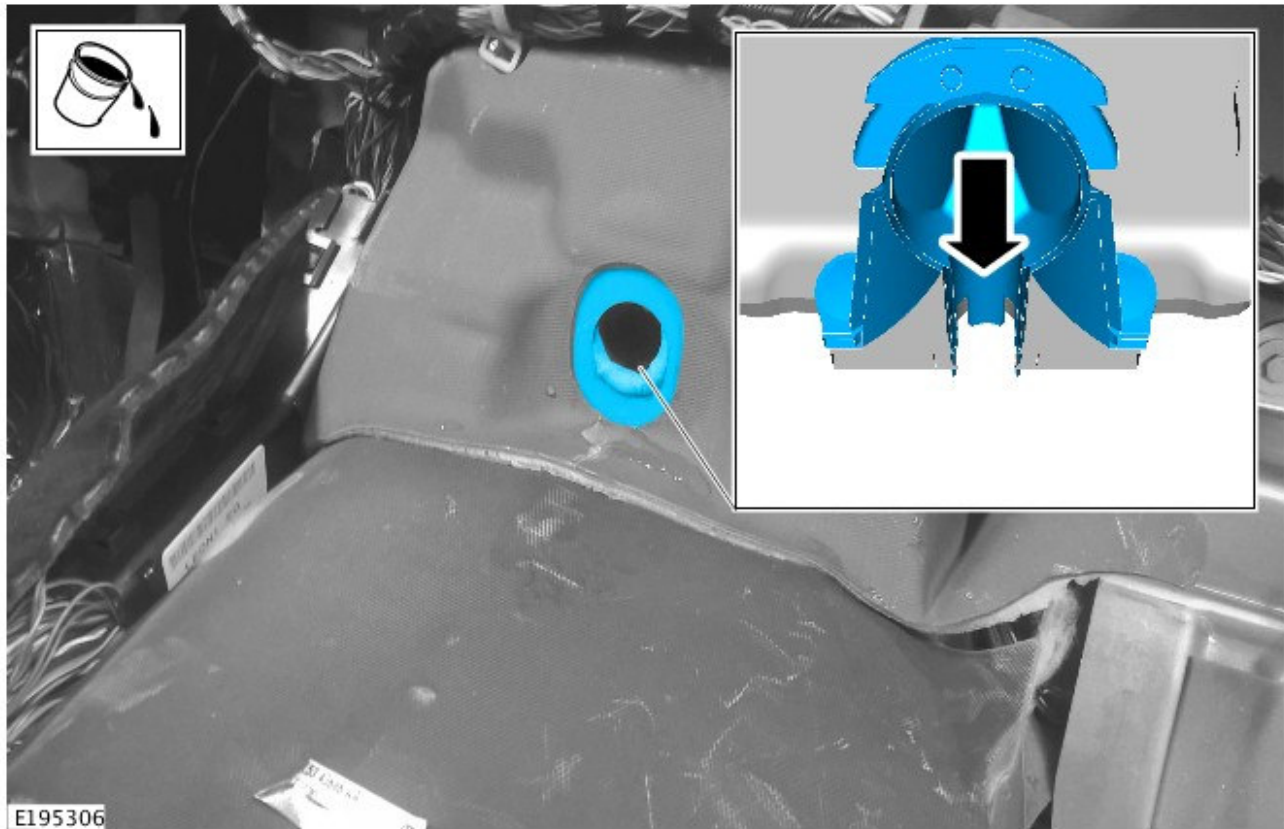
Using a suitable tool, break the seal in the A/C evaporator drain tube.



5.  **NOTE: Using a suitable container, catch all the water that exits the A/C evaporator drain tube. The water will run over the transmission and into the container.**

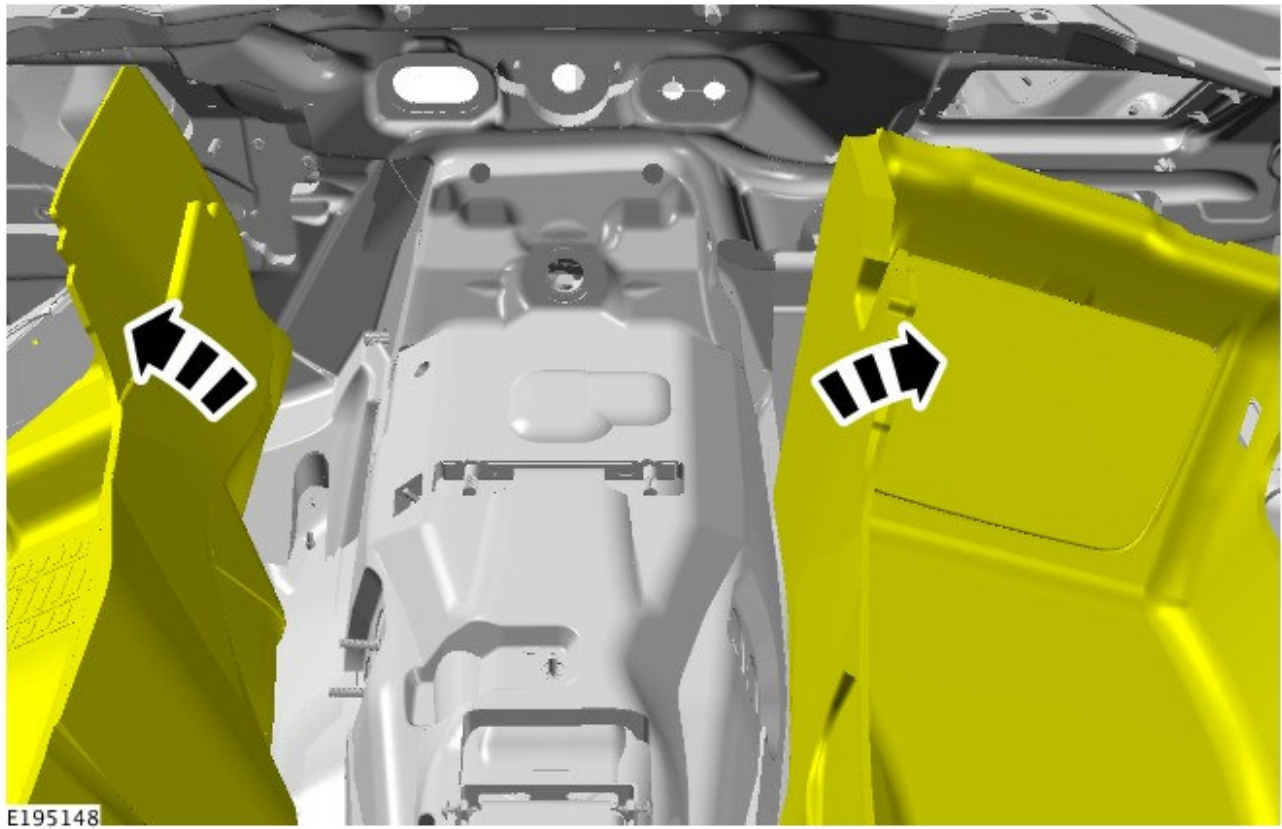
Make sure that the A/C evaporator drain tube is clear.

1. Using a suitable tool, pour water down the A/C evaporator drain tube and visually check that the water exits the A/C drain tube from underneath the vehicle.



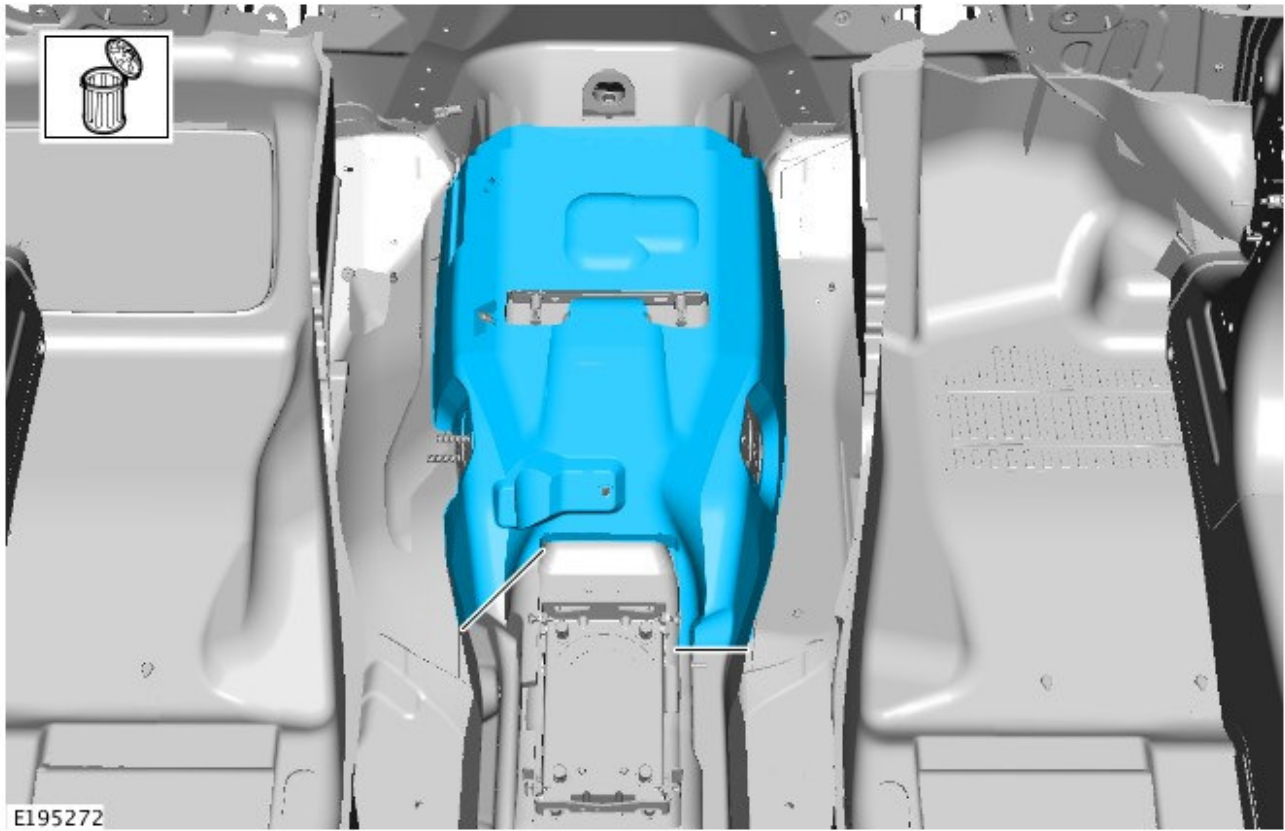
**6. Check the condition of the front carpets.**

- If the front carpets are damp and can be dried or cleaned to an acceptable standard, perform this task.
  - Position carpets to one side.
- If the front carpets are wet and cannot be dried or cleaned to an acceptable standard and replacement is required, perform this task. To be performed as a separate claim.

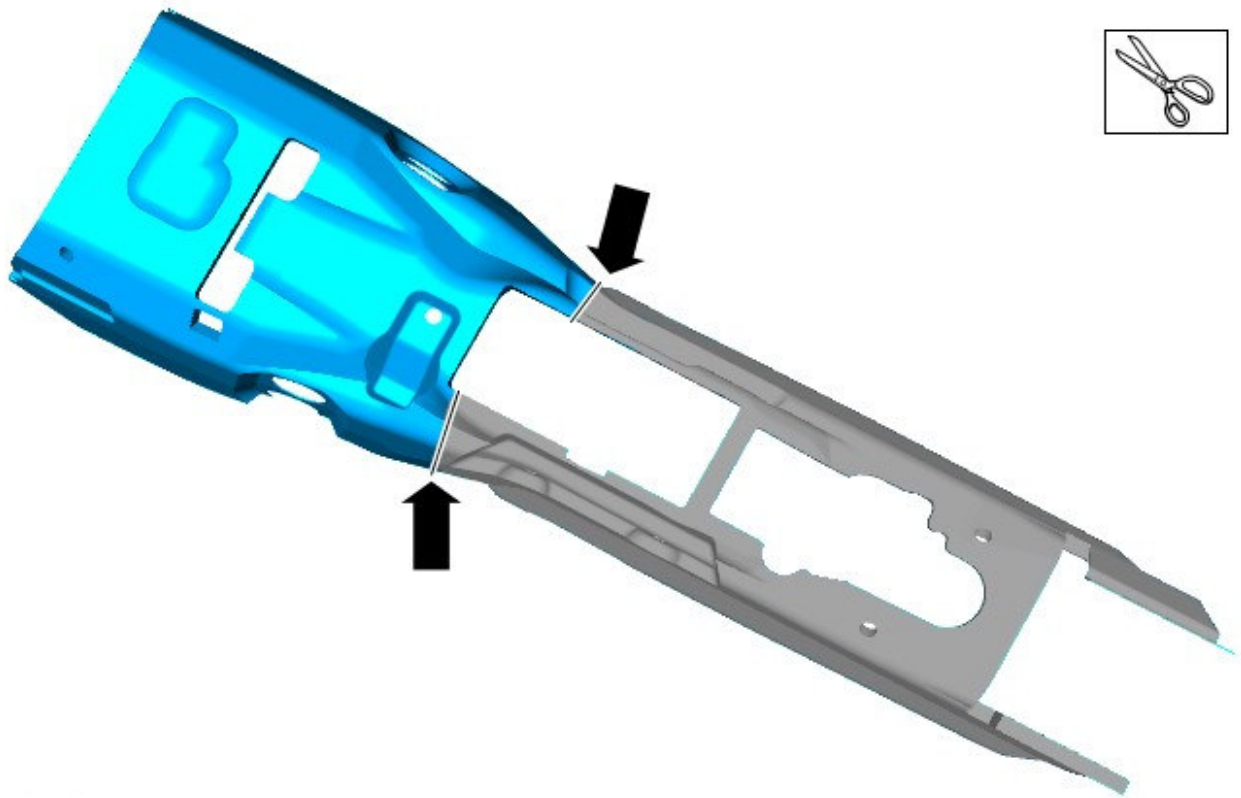


**7.** Cut the tunnel insulation cover as shown.

1. Remove and retain the cut tunnel insulation for later use.

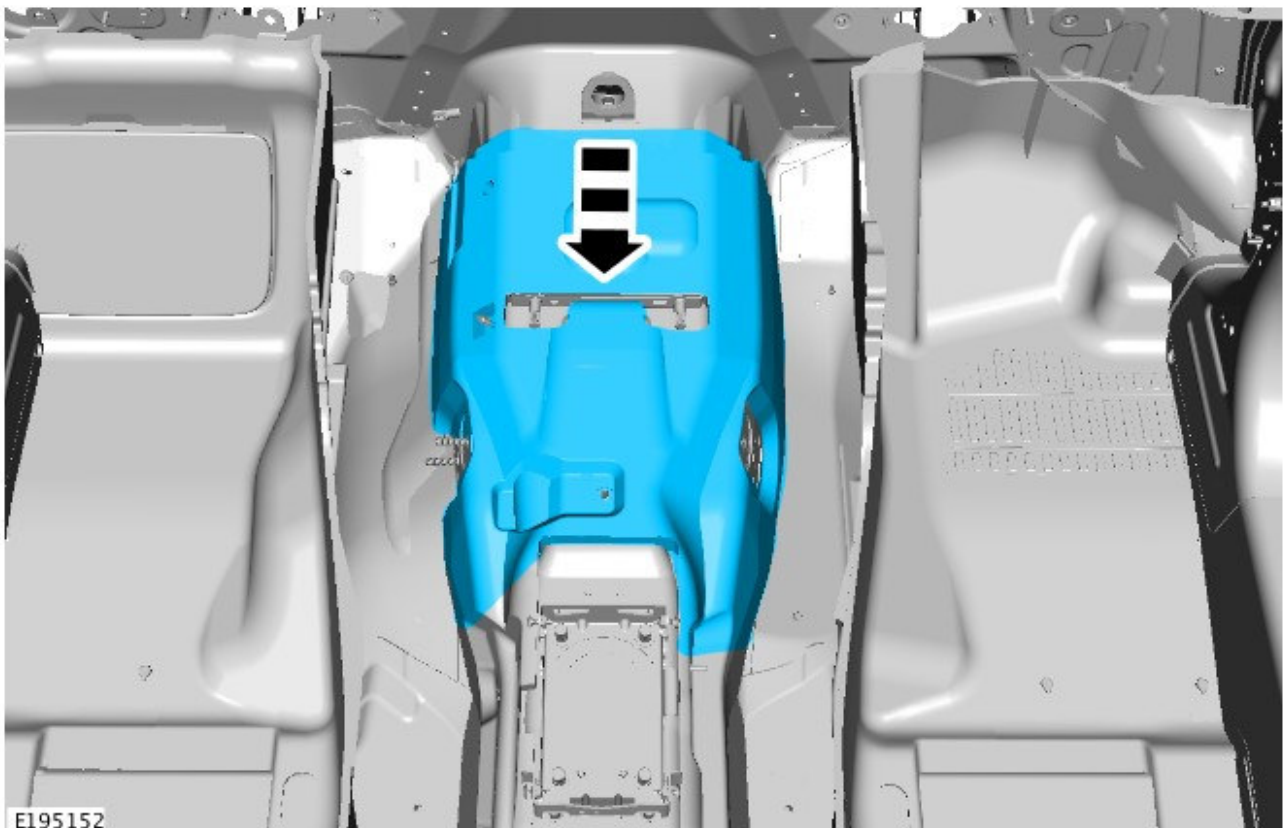


8. Using the removed tunnel insulation cover that was removed in step 7 as a template, cut the replacement tunnel insulation cover as shown.



E195149

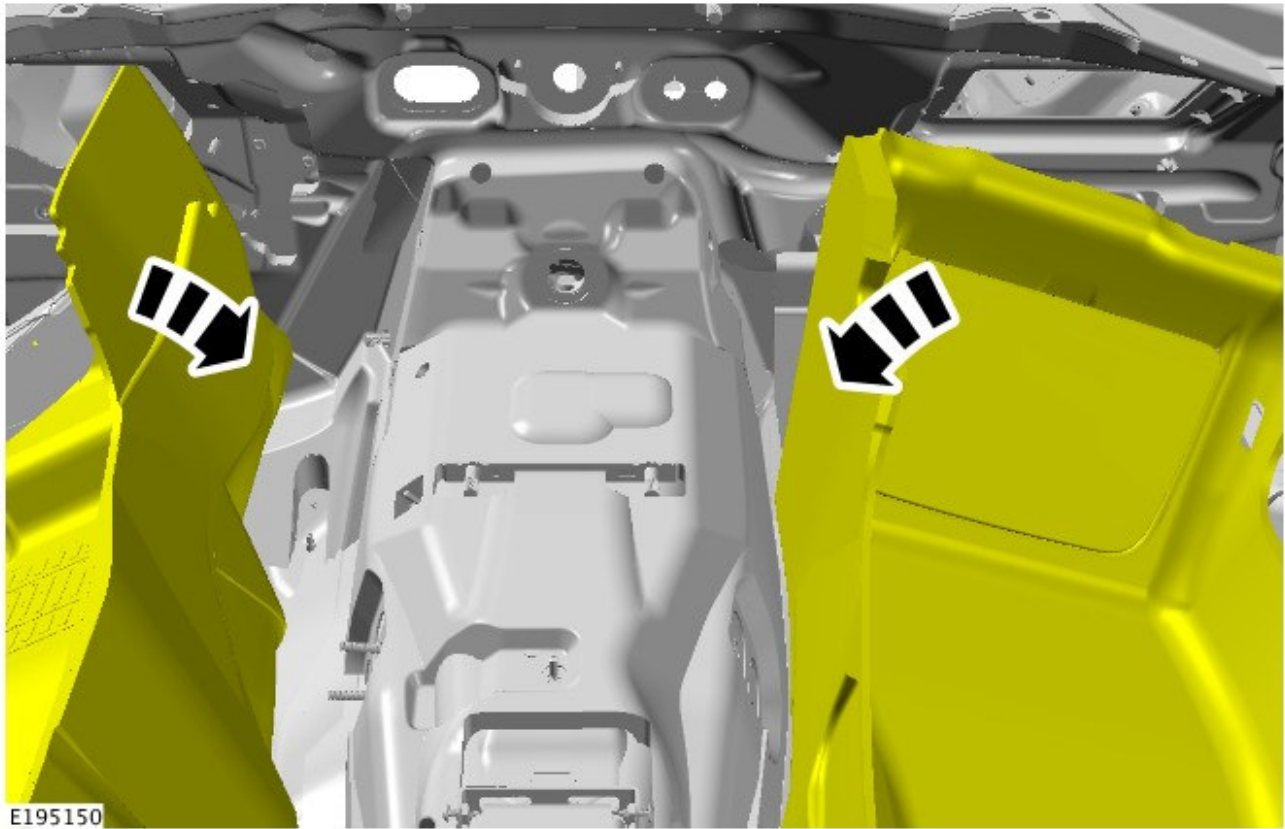
9. Install the new tunnel insulation cover.



E195152

10.  **NOTE: Make sure the carpet and vehicle floor pan dry before installing the carpets.**

Install the carpets.



11. Install the heater core and evaporator core housing (see TOPIx Workshop Manual section 412-01: Climate Control - Heater Core and Evaporator Core Housing).