

TECHNICAL BULLETIN

JTB00503NAS1

15 AUG 2016



© Jaguar Land Rover North America, LLC

NOTE: The information in Technical Bulletins is intended for use by trained, professional Technicians with the knowledge, tools, and equipment required to do the job properly and safely. It informs these Technicians of conditions that may occur on some vehicles, or provides information that could assist in proper vehicle service. The procedures should not be performed by 'do-it-yourselfers'. If you are not a Retailer, do not assume that a condition described affects your vehicle. Contact an authorized Jaguar service facility to determine whether this bulletin applies to a specific vehicle.

SECTION: 501-05

Second Row Seatbelt Chute Gap Too Large

AFFECTED VEHICLE RANGE:

F-PACE (X761)

Model Year: 2017
VIN: 045000-047620
Assembly Plant: Solihull

MARKETS:

NAS

CONDITION SUMMARY:

Situation: On vehicles fitted with adjustable second row seat backrests, a gap greater than 2mm may be evident between the seatbelt chute trim and where it meets the C-pillar trim

Cause: Incorrect tolerance of seatbelt chute gap.

Action: Should a customer express this concern, follow the Service Instruction below.

PARTS:

T4A13386 PVJ	Left C/D pillar trim no speaker	1
T4A13387 PVJ	Left C/D pillar trim with speaker	1
T4A13384 PVJ	Right C/D pillar trim no speaker	1
T4A13385PVJ	Right C/D pillar trim with speaker	1
T4A13160 PVJ	Left seatbelt chute	1
T4A13159 PVJ	Right seatbelt chute	1

TOOLS:

Refer to Workshop Manual for any required special tools.

WARRANTY:

NOTE: Repair procedures are under constant review, and therefore times are subject to change; those quoted here must be taken as guidance only. Always refer to TOPIX to obtain the latest repair time.

NOTE: DDW requires the use of causal part numbers. Labor only claims must show the causal part number with a quantity of zero.

DESCRIPTION	SRO	TIME (HOURS)	CONDITION CODE	CAUSAL PART
C-Post trim pad - Renew	76.13.83	0.5	07	T4A5859PVJ

NOTE: Normal Warranty procedures apply.

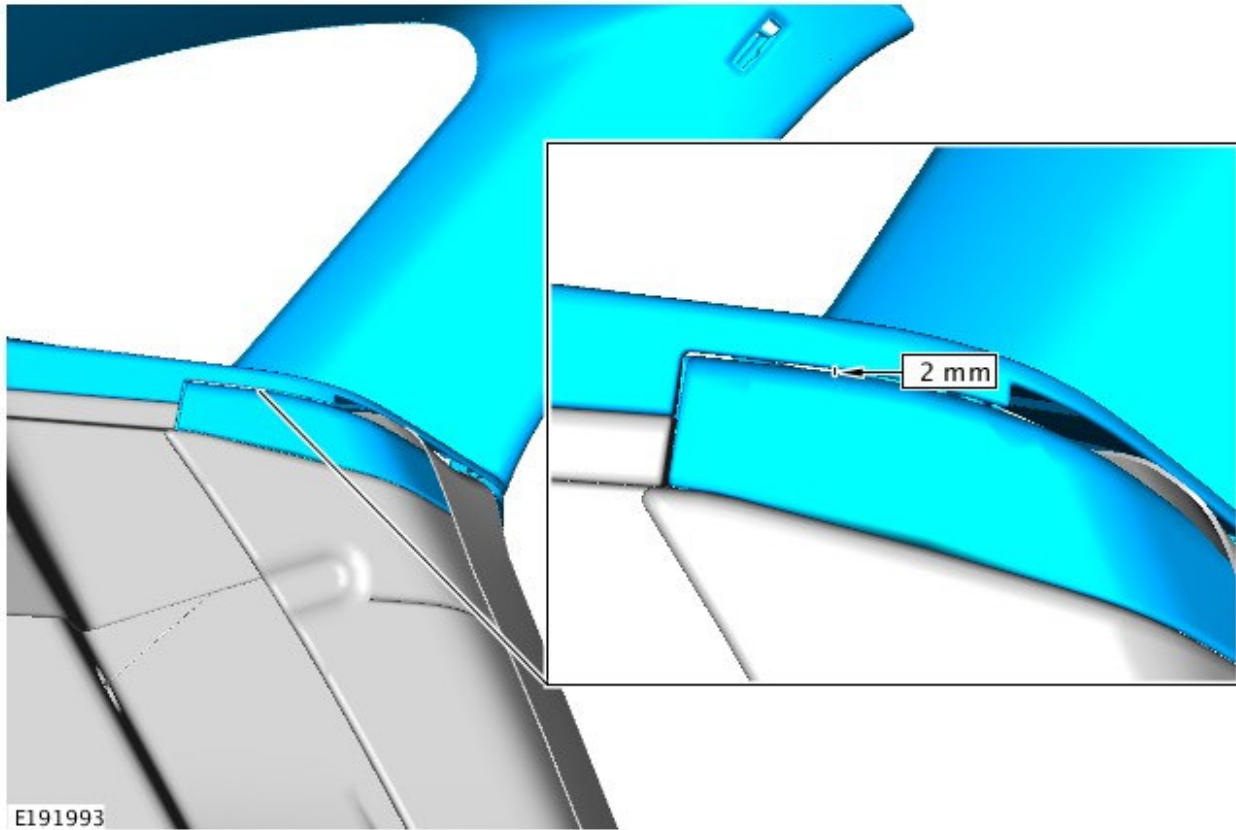
SERVICE INSTRUCTION:

 **NOTE: Some parts may not be shown in the graphics for clarity.**

 **NOTE: Left-side shown; right-side similar.**

1. Using a suitable tool, check the gap between the C-pillar trim and the seatbelt chute.

- If the gap is less than 2 mm, do not continue with this Service Instruction.
- If the gap is larger than 2 mm, continue to Step 2.



2. Remove the parcel shelf (see TOPIx Workshop Manual section 501-05: Interior Trim and Ornamentation - Parcel Shelf).

3. Remove the C-pillar trim panel (see TOPIx Workshop Manual section 501-05: Interior Trim and Ornamentation - C-Pillar Trim Panel).

4. Visually check the C-pillar trim slot.

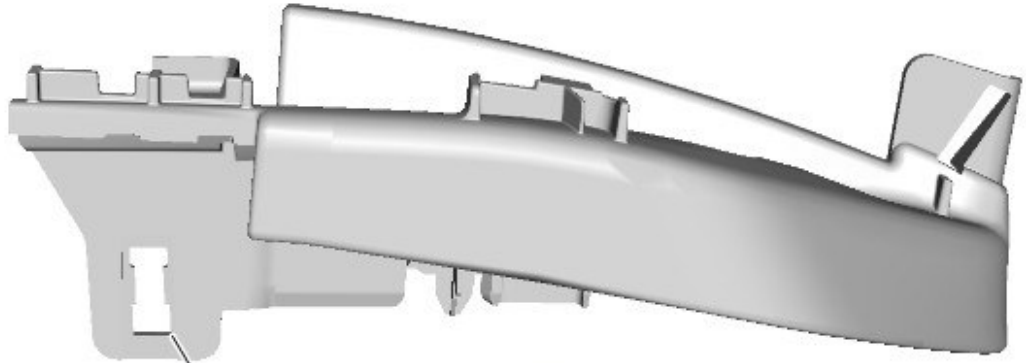
- If the C-pillar trim slot is not damaged, continue to Step 5.
- If the C-pillar trim slot is damaged, discard the C-pillar trim.
 - Continue to Step 5.



E191982

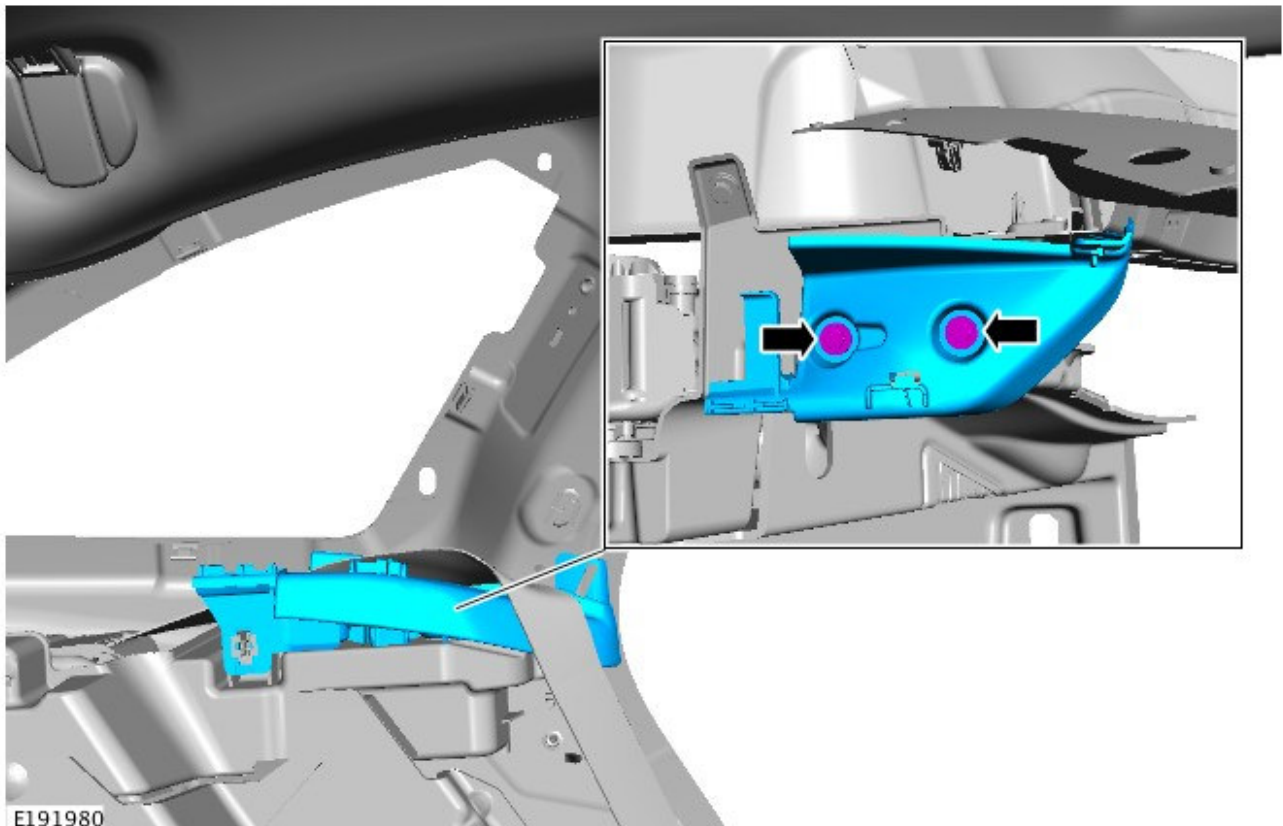
5. Check to see if the seatbelt chute has the plastic modifier fitted.

- If the seatbelt chute does not have the plastic modifier, continue to Step 8.
- If the seatbelt chute has the plastic modifier, continue to Step 6.



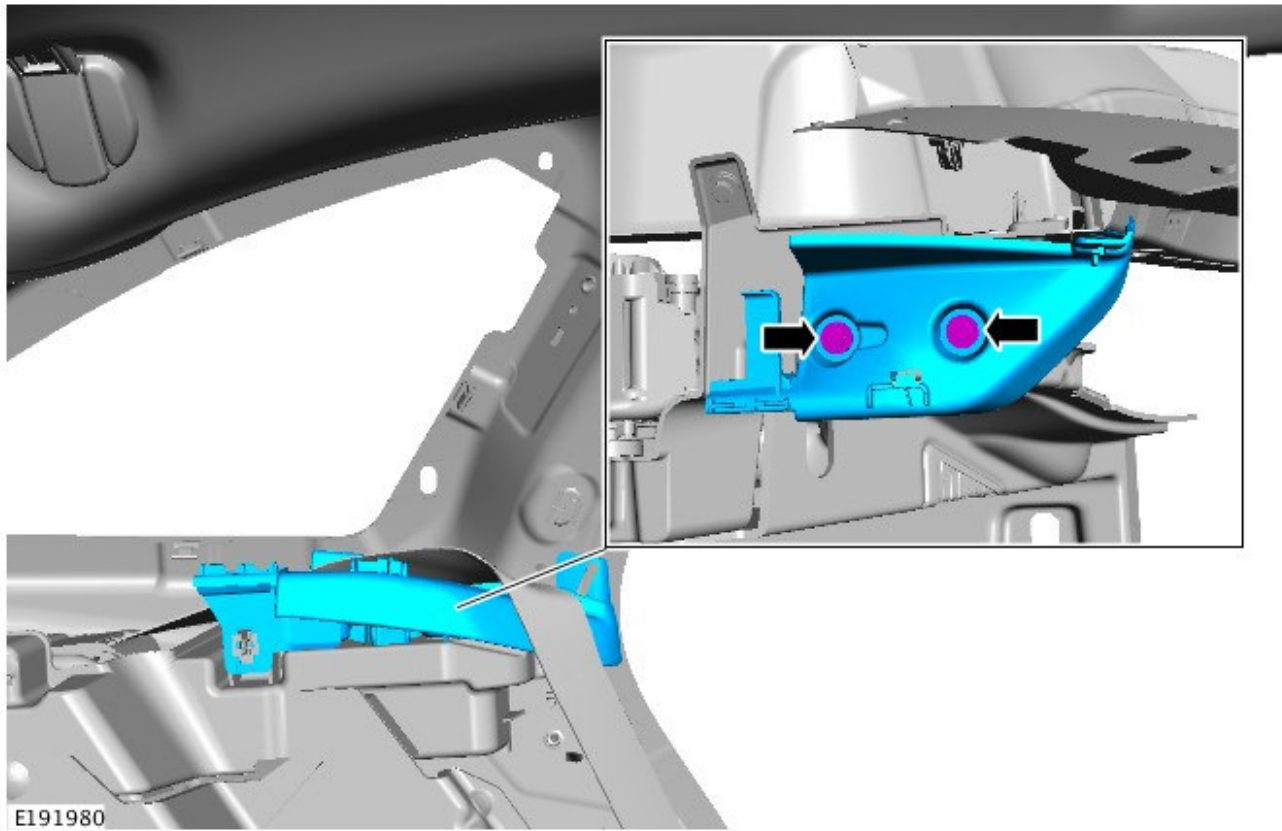
E191981

6. Remove and discard the seatbelt chute.



E191980

7. Install the new seatbelt chute.



8. Install the new C-pillar trim panel (see TOPIx Workshop Manual section 501-05: Interior Trim and Ornamentation - C-Pillar Trim Panel).

- If the C-pillar trim slot was found to be not damaged (Step 4), install a existing C-pillar trim panel.
- If the C-pillar trim slot was found to be damaged (Step 4), install a new C-pillar trim panel.

9. Install the parcel shelf (see TOPIx Workshop Manual section 501-05: Interior Trim and Ornamentation - Parcel Shelf).