

Campaign – Hinge Fastener Replacement

MODIFICATION INSTRUCTION

Bulletin No. 2016-1

Date: April 2016

Systems affected

2014, 2015 EBB-40, EBB-60 trailers

Background

Isolated incidents of individual screw failure have been identified on the door hinge assemblies fitted to trailers

Symptom description

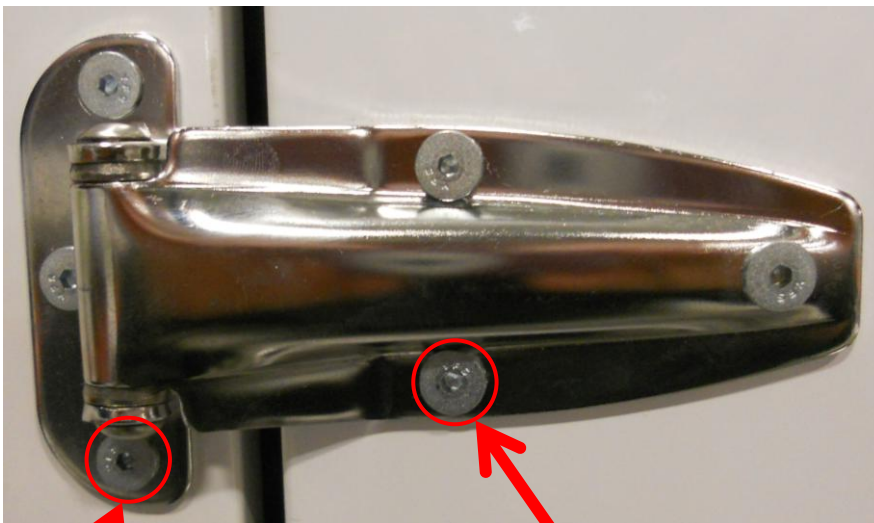
Screw heads may be found missing on hinge assemblies

Parts required

83900.698 screw kit

Procedure

Remove screws from one hinge at a time and replace with supplied parts. Torque value for each fastener is 41 in-lb or 3.5 ft-lb.



Note that original screws on this side may be secured from behind with machine nuts. If so equipped, nuts may be reused.

New screws (depicted) require a 0.125" hex tool. Recommended torque 41 in-lb or 3.5 ft-lb.