

# Technical Service Bulletin



## 20 Fuel cannot be added to vehicle or fueling vehicle is difficult

20 16 68 2044039/1 April 28, 2016.

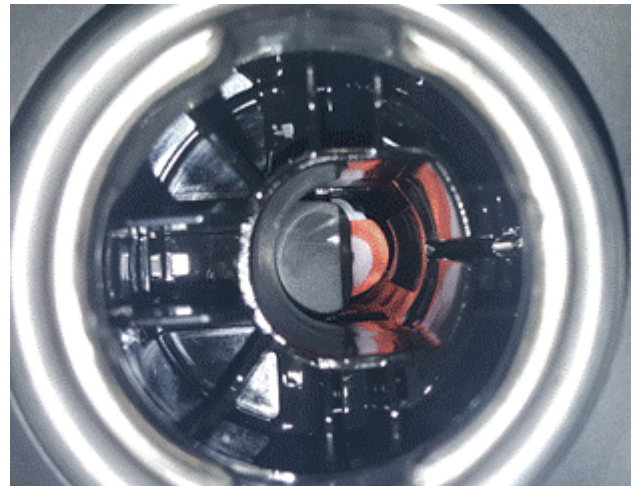
Model(s)	Year	VIN Range	Vehicle-Specific Equipment
Q7	2017	All	Not Applicable

## Condition

Vehicle does not accept fuel, is slow to refuel, or it is difficult to insert the fuel pump nozzle.

## Technical Background

There is a broken flap inside of the filler neck (Figure 1).



*Figure 1. Broken flap inside of filler neck.*

## Production Solution

Improved flap design of the filler neck.

## Service

Replace complete fuel tank according to the instructions in ELSA at: *Repair Manual*>>*Power Unit*>>*Fuel Supply*>>*Fuel tank*>>*Removing and installing fuel tank*.

# Technical Service Bulletin



## Warranty

<b>Claim Type:</b>	Use applicable claim type. If vehicle is outside any warranty, this Technical Service Bulletin is informational only.		
<b>Service Number:</b>	2010		
<b>Damage Code:</b>	0010		
<b>Labor Operations:</b>	Fuel tank remove+reinstall	2010 1950	280 TU
	Rear axle remove+reinstall (For vehicles without adaptive air suspension)	4205 1900	480 TU
	Rear axle remove+reinstall (For vehicles with adaptive air suspension)	4205 1901	370 TU
	Technical diagnosis at dealer's discretion (Refer to Section 2.2.1.2 and Audi Warranty Online for DADP allowance details)		
<b>Claim Comment:</b>	As per TSB # 2044039/1		

All warranty claims submitted for payment must be in accordance with the *Audi Warranty Policies and Procedures Manual*. Claims are subject to review or audit by Audi Warranty.

## Additional Information

All parts and service references provided in this TSB (2044039) are subject to change and/or removal. Always check with your Parts Department and service manuals for the latest information.