

# Technical Service Bulletin



## 01 V6 message during service reset: AIR system - action required - observe test plan

01 16 65 2035454/4 May 24, 2016. Supersedes Technical Service Bulletin Group 01 number 14-90 dated August 19, 2014 for reasons listed below.

Model(s)	Year	VIN Range	Vehicle-Specific Equipment
A4	2009 - 2012	All	3.2 FSI and 3.0 TFSI
A5	2010	All	3.2 FSI and 3.0 TFSI
A5 Cabriolet	2010 - 2013	All	3.2 FSI and 3.0 TFSI
A6	2009 - 2012	All	3.2 FSI and 3.0 TFSI
A7	2012	All	3.2 FSI and 3.0 TFSI
Q5	2009 - 2012	All	3.2 FSI and 3.0 TFSI
Q7	2011 - 2012	All	3.2 FSI and 3.0 TFSI

## Condition

REVISION HISTORY		
Revision	Date	Purpose
4	-	Revised <i>Condition</i> (Added Note)
3	8/19/2014	Revised header data (Added model) Revised <i>Warranty</i> (Added labor operations)
2	12/20/2013	Revised <i>Condition</i> (Updated message text) Revised <i>Service</i> (Revised instructions) Revised <i>Warranty</i> (Added TUs)

- During reset of the service reminder, the following message appears on the ODIS tester: “**AIR system - action required - observe test plan**” (Figure 1).

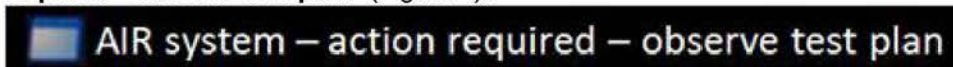


Figure 1. Message on ODIS tester.

- MIL is not illuminated.



### Note:

For documentation and audit purposes, take a screen shot of the above message **together** with the top part of the tester screen (Figure 2), identifying the vehicle. Attach the screen shots to the repair order so they can be easily

accessed if needed for warranty verification.

Importer:	444	VIN:	WAUJANAF45HN000240
Dealer:	03999	Engine:	CYMC 2.0I TFSI / 185kW
RO:	---		

*Figure 2. Image of top part of tester screen.*

## Technical Background

Under certain driving conditions, the secondary air ports in the cylinder head can accumulate carbon over time, causing a restriction. The ODIS tester can identify the state of the restriction, and will request that the system is cleaned in order to prevent the MIL from illuminating.

## Production Solution

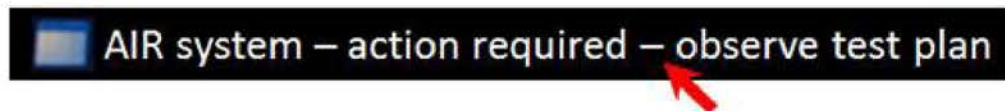
Not applicable.

## Service

Please note that before performing this repair for the first time, it is mandatory that the technician complete Audi Academy Course #940134 and assessment #940134B, otherwise the warranty claim will be denied. The course and assessment can be found on the Audi Academy CRC site. Specific video sections are reference in the instructions below.

### Select the test plan in ODIS

1. In the ODIS tester click on the “**AIR system - action required - observe test plan**” message to follow the test plan (Figure 2).



*Figure 2. Message on ODIS tester.*

2. Select **-2-** for **Cleaning**. Follow the test plan, which is also outlined below.
3. Check the hosing between the secondary air pump and combi valves as instructed in the test plan.
4. Based on instruction from the tester (“clean immediately” or “clean within next 1000 miles” -- based on level of restriction), clean the secondary air ports according to the instructions that follow in this bulletin.

### Prepare for Power Washing

1. Move the exhaust sliding bushings (that connect the catalytic converter and muffler) back, then lower the catalytic converter pipes (Figure 4).

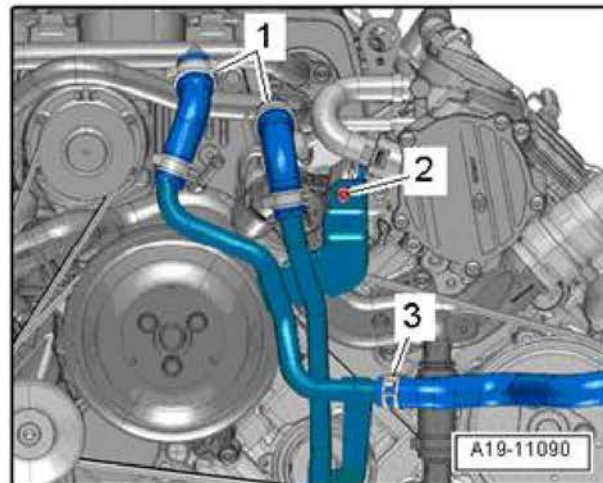
For Q7, unbolt muffler from catalytic converter. Cover mufflers with plastic bag to prevent water from entering.

Cleaning water will drain out of the catalytic converter pipes during the cleaning process.



*Figure 4. Lowered catalytic converter pipes*

2. Remove all spark plugs and cover the engine harness plugs for the coils (for water protection).
3. Drain the coolant so that it can be reused.
4. Bring front end of the car into service position (for Q5, A6, S4, and S5 Cabrio) to make room in the front of the engine. The Q7 has enough room for access to the front of the cylinder heads.
5. For 3.0T only: remove the coolant supply lines (intercooler of supercharger) in the front of the engine (Figure 5).



*Figure 5. Front coolant pipes to be removed for 3.0T*

6. Remove the following components:

- Coolant pipe (Figure 6,1)
- Coolant flange (Figure 6,2)
- Pulley and, if needed, bracket of power steering pump (Figure 6,3)
- Pulley of water pump (Figure 6,4)
- Coolant tube (Figure 6,5)
- Dipstick tube (Figure 6,6)

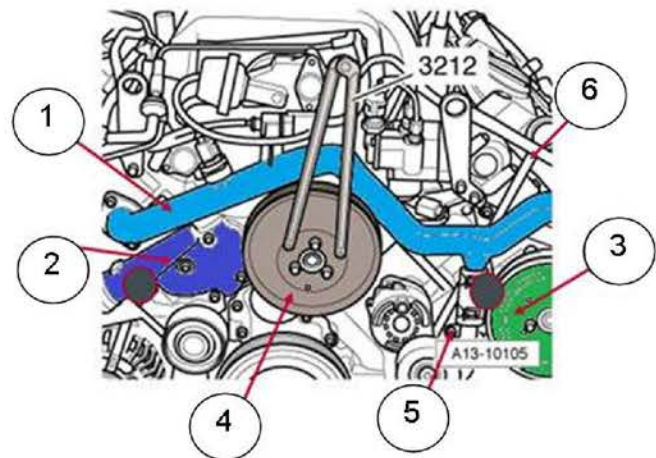


Figure 6. Engine component removal



**Note:**

When removing the dipstick tube, turn it 180 degrees, then reinstall it for water protection.



**Note:**

To loosen the coolant tube, remove 2 bolts (Figure 7, A and C), open clip (Figure 7, B), and pry bushing apart as shown in training video (Figure 7, D). There is no need to loosen the AC compressor.

Cover opening of right coolant pipe to prevent coolant circuit contamination.

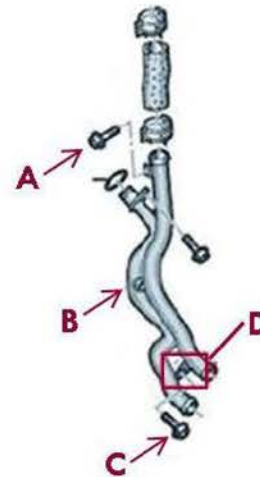


Figure 7. Loosening the coolant tube

7. Remove main port freeze plug by hitting the marked area with a small punch until it turns (Figure 8). Remove with pliers.

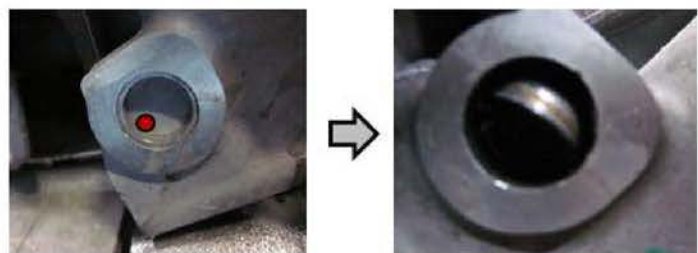


Figure 8. Marked area on main port of freeze plug.

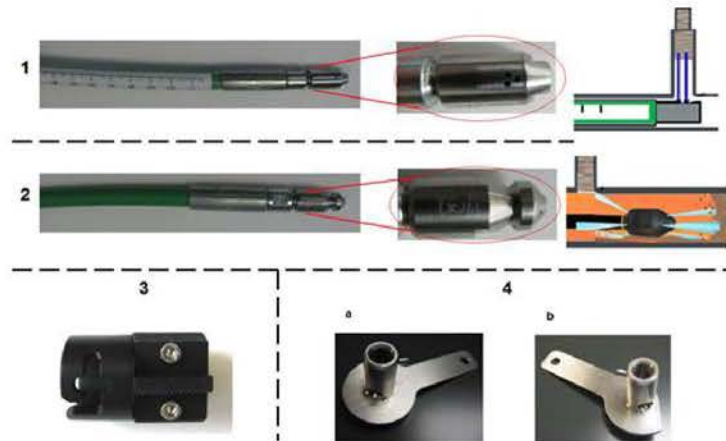
## Prepare to Power Wash

 **Warning:**

- Read pressure washer user manual and follow these safety instructions.
- Always insert special cleaning hose into adaptor and engine *before* turning pressure washer on.
- If switching special cleaning to a different port, turn pressure washer off and release residual pressure by pulling the trigger before removing the special cleaning hose from the engine.
- Wear safety glasses and gloves.

1. Become familiar with the special tool set VAS6825 (Figure 6):

- Special hose with scale for cleaning single ports (Figure 9,1)
- Special hose for cleaning the main ports (Figure 9,2)
- Hose adaptor for the special hose with scale (Figure 9,3)
- Engine adaptor for bank one (Figure 9, 4a)
- Engine adaptor for bank two (Figure 9, 4b)



**Figure 9.** Special tool set VAS6825

2. To catch water, put a pan under the front of the engine and under the disconnected catalytic converter pipes.
3. Install engine adaptors on the appropriate banks (Figure 10, Figure 11).



**Figure 10.** Engine adaptor on bank one.



**Figure 11.** Engine adaptor on bank two.

4. To ensure proper pressure washer function, use a ¾-inch water supply hose (no longer than 60 feet) to supply pressure washer.

The Audi-supplied pressure washer comes with a 22mm male-to-male adapter (to connect special tool to trigger gun), a pressure gauge (to connect between pressure washer and high pressure hose), and a 220V power adapter.

Make sure that pressure is at least 1800 psi when using the special single port cleaning hose (the hose with the scale). Use the table below to compensate for low water pressure:

psi While Cleaning Single Ports	Cleaning Time in Minutes
Less than 1900	Pressure too low – check water supply
1900	4
2000 or higher	3

## Power Wash the Ports

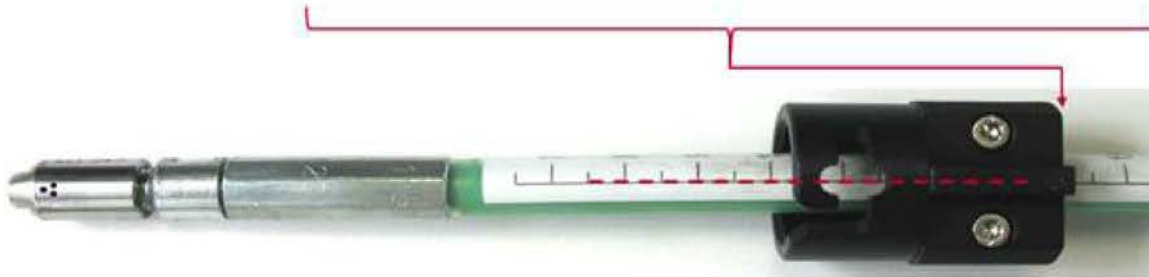
### Cleaning Main Secondary Port:

1. Insert special main port cleaning hose (the hose without the scale) two inches into the engine adaptor.
2. Turn the pressure washer on.
3. Holding the cleaning hose tightly, pull the pressure washer trigger.
4. Gradually move the cleaning hose into the port, going back and forth until the combi valve is reached. All water comes out at the adaptor #4.
5. Continue going back and forth through the whole port until only clean water drains out of the cylinder head.
6. Do the same with the other cylinder head.

### Cleaning Single Ports:

1. Because every port has a different distance to the cylinder head, use the table below to position the hose adaptor for the special single port cleaning hose (the hose with the scale) correctly into the hose. The back side of the hose adaptor must align with the number on the scale of the cylinder to be cleaned (Figure 12). The longitudinal slot on the hose adaptor must align with the black line on the scale for correct rotational positioning (Figure 12).

Dimensions Port	1	2	3
Bank One	10.5	19.5	28.5
Bank Two	13.7	22.7	31.8



**Figure 12:** Arrow indicating how the back side of the adaptor must align with the scale. Red dotted line indicating how the longitudinal slot must align with the black line on the scale.

2. After adjusting the position of the hose adaptor, insert the special single port cleaning hose into the hose adaptor, and bring it back into locking position (Figure 13).



**Figure 13.** Locking position / transvers longitudinal movement and of the hose adaptor

3. While cleaning, make sure that the pressure washer is supplying pressure greater than 1800 psi.
4. Based on the washer's pressure, clean the port based on the table below. While cleaning, continuously move the hose adaptor within the longitudinal and transvers slots (Figure 13).

psi While Cleaning Single Ports	Cleaning Time in Minutes
Less than 1900	Pressure too low – check water supply
1900	4
2000 or more	3



**Tip:** After ten seconds of cleaning, all of the water should be draining out of the exhaust. If water is draining out of the engine adaptor, check the position of the hose adaptor on the hose.

- Do the same for all remaining cylinders.
- It is recommended that after cleaning, all single ports are checked with snap-on boroscope BK6000 (or similar, with 90-degree lens), to make sure all ports are clean (Figure 14).



**Figure 14.** Clean single port.

- When all carbon is removed, install a new main port plug using an 8mm socket with a short extension, paying special attention to install it squarely. The outer edge of the plug should be recessed ~0.5mm – 1mm behind the outer cylinder head edge.
- Reinstall all components (except spark plugs) and fill system with coolant according to ELSA.
- Using a vacuum extractor, remove **all** water from **all** combustion chambers.
- Make sure **all water is removed** from the combustion chambers by using the **self-start function twice while the spark plugs are still removed** (cover spark plug openings with a towel). Install spark plugs and coils.

Make sure water is completely drained out of exhaust (make sure the exhaust is lowered enough).



**Tip:** There is no need to replace the engine oil; almost no water drains into the oil pan.

- Allow the car to run at idle for 15 minutes to ensure that any remaining in the exhaust system evaporates.

## After Power Washing

1. Delete all DTCs. Bring engine to operating temperature.
2. Go to *Control Modules >> 01 Engine Control Module >> Control module OBD>> Basic Settings >> Checking Secondary Air System*.
3. Select MVB: **MASS\_SA\_REL[0]** and **MASS\_SA\_REL[1]**
4. Perform test (Press brake and gas pedal at the same time, start test on ODIS tester).
5. Immediately after the test is complete, read **MASS\_SA\_REL[0]** and **MASS\_SA\_REL[1]**. If the value is above 0.7, the cleaning was successful.

# Technical Service Bulletin



## Warranty

<b>Claim Type:</b>	1EB		
<b>Service Number:</b>	2644		
<b>Damage Code:</b>	0010		
<b>Labor Operations:</b>	<b>Q5 - CALB engine (525)</b>		
	Coolant pipe remove + reinstall	1961 1906	250 TU
	Power steering pump remove + reinstall (overlap reduced includes time for exhaust and spark plugs)	4898 1999	60 TU
	Lock carrier loosen + fasten	5038 0900	160 TU
	Pressure wash	2666 2999	75 TU
	<b>A6 - CALA engine (555)</b>		
	Coolant pipe remove + reinstall	1961 1906	220 TU
	Power steering pump remove + reinstall (overlap reduced includes time for exhaust and spark plugs)	4898 1999	60 TU
	Lock carrier loosen + fasten	5038 0900	220 TU
	Pressure wash	2666 2999	75 TU
	<b>A6 - CCAA engine (625)</b>		
	Coolant pipe remove + reinstall	1961 1941	290 TU
	Power steering pump remove + reinstall (overlap reduced includes time for exhaust and spark plugs)	4898 1999	60 TU
	Lock carrier loosen + fasten	5038 0900	220 TU
	Pressure wash	2666 2999	75 TU
	<b>A6/A7 - CGXB engine (575)</b>		
	Coolant pipe remove + reinstall	1961 1999	220 TU
	Power steering pump remove + reinstall (overlap reduced includes time for exhaust and spark plugs)	4898 1999	60 TU
	Lock carrier loosen + fasten	5038 0999	220 TU
	Pressure wash	2666 2999	75 TU

# Technical Service Bulletin



	<b>S4, S5 Cab - CCBA engine (565)</b>		
	Coolant pipe remove + reinstall	1961 1941	290 TU
	Power steering pump remove + reinstall (overlap reduced includes time for exhaust and spark plugs)	4898 1999	60 TU
	Lock carrier loosen + fasten	5038 0900	160 TU
	Pressure wash	2666 2999	75 TU
	<b>Q7 - CJWE, CJWC, CJWB engines (335)</b>		
	Coolant pipe remove + reinstall	1961 1939	220 TU
	Power steering pump remove + reinstall (overlap reduced includes time for exhaust and spark plugs)	4898 1999	60 TU
	Pressure wash	2666 2999	75 TU
	<b>A5 - CALA engine (525)</b>		
	Coolant pipe remove + reinstall	1961 1906	250 TU
	Power steering pump remove + reinstall (overlap reduced includes time for exhaust and spark plugs)	4898 1999	60 TU
	Lock carrier loosen + fasten	5038 0900	160 TU
	Pressure wash	2666 2999	75 TU
<b>Diagnostic Time:</b>	GFF - Checking and clearing fault codes included in existing labor operations	0150 0000	Time stated on diagnostic protocol (Max 40 TU)
	Road test prior to service procedure	No allowance	0 TU
	Road test after service procedure	0121 0004	10 TU
	Technical diagnosis at dealer's discretion. (Refer to Section 2.2.1.2 and Audi Warranty Online for DADP allowance details)		
<b>Claim Comment:</b>	As per TSB #2035454/4		

All warranty claims submitted for payment must be in accordance with the *Audi Warranty Policies and Procedures Manual*. Claims are subject to review or audit by Audi Warranty.

## Required Parts and Tools

Part Number	Part Description	Quantity
06E121119A or 06E121119E	O-ring cross pipe	2
N 0119078	Freeze plug	2
06E121139E or 06E121139H	Seal coolant flange 3.2FSI	1
G 013A8J1G	Coolant	0.5
06E121119C	O-ring cross pipe to therm.	1

Tool Number	Tool Description	Quantity
VAS6825	Tool set	1
VAS6825/1	Adaptor set	1
Not applicable	Pressure washer	1

## Additional Information

All parts and service references provided in this TSB (2035454) are subject to change and/or removal. Always check with your Parts Department and service manuals for the latest information.