

Service Information

Special Tools & Equipment

Number: ATE-16-20

Subject: John Bean Pro32 Vehicle Database Update (June 2016)

Date: July 13, 2016

Supersedes ATE-16-12 dated May 13, 2016 due to Pro32 Program software and Pro32 Vehicle Data software updates.

This communication provides important information on how to obtain and install the latest software for the John Bean VAG1943B, VAS6331, VAS6421 alignment tools.

Latest Software Versions Released:

- John Bean Pro32 Vehicle Database Update (Version 06.2016).exe

Installation Requirements:

- All John Bean VAG1943B, VAS6331, VAS6421 Aligners must be previously updated to Pro32 Program software version 3.4 or higher before performing this update
- Attain a copy of Pro32 Aligner software and Vehicle Specification updates installation instructions (see attachments)
- Dealers must download the John Bean Pro32 Vehicle Database Update (Version 06.2016).exe file from ServiceNet> *Wheel Alignment Software* > *John Bean*

Installation:

To update the John Bean VAG1943B, VAS6331, VAS6421 Aligners, please read and follow the Pro32 Aligner software and Vehicle Specification updates installation instructions attached.

Questions regarding installation of software updates to VAG1943B, VAS6331 or VAS6421 (after they have been downloaded), can call EquiServ technical support desk (service group for John Bean) at 800-225-5786. EquiServ will also be able to help with Aligner software and specifications installed from CD.

Vehicle Data Base für Software Pro32 (for wheel aligner models VAS6331, VAS 6421 and VAG 1943):

Pro32 DB VAG-062016*, June 2016

Supplements/Changes compared to Version VAG - 042016

Fahrzeugdatenbank für Pro32 Software (für Achsmessgerätmodelle VAS 6331, VAS 6421 und VAG 1943)

Pro32 DB VAG-062016*, Juni 2016

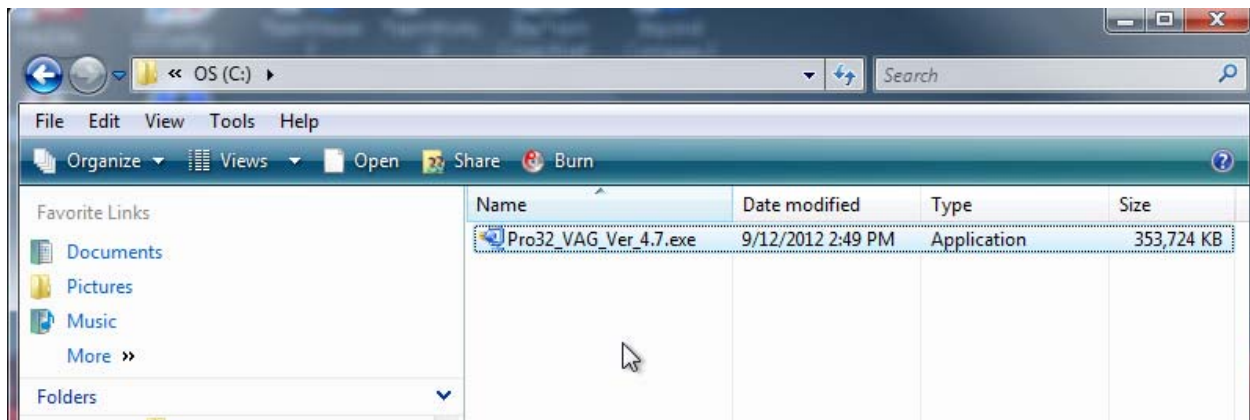
Ergänzungen/Änderungen zur Version VAG - 042016

Volkswagen	VW Sharan [7N]	1
	GOLF VARIANT [BX5]	2
	EOS [1F/1F7/1F8]	2
<i>Mexico/Mexiko</i>	Golf 2015 [AU1]	2
<i>Mexico/Mexiko</i>	Golf Variant 2015 [BX5]	2
Audi	SQ7	1
	R8 [4S]	2
	A3 [PA]	2
	A3 [8V]	2
	A3 Lim [PA]	2
	A3 SQB [PA]	2
	A3 Cabrio [PB]	2
Skoda	SKODA OCTAVIA III, DCC Fahrwerk/suspension	1
	SUPERB III, Nivomat G01+1JI Fahrwerk/suspension	1
Seat	Änderung aller Modellcodes (3-stellig auf 2-stellig)/change all model codes to 2-digit	2
Bentley	-	-
Lamborghini	-	-
Porsche	Carrera (991)	1
	991 GT3 RS	2
		1 = Neu / New 2 = Änderung / Change *= die ersten beiden Ziffern bezeichnen den Monat, die letzten 4 Ziffern die Jahreszahl

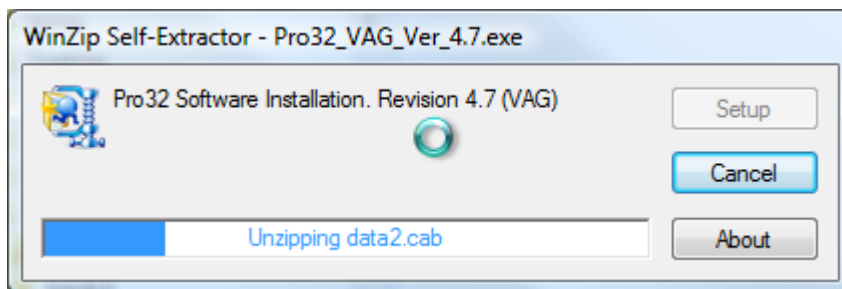
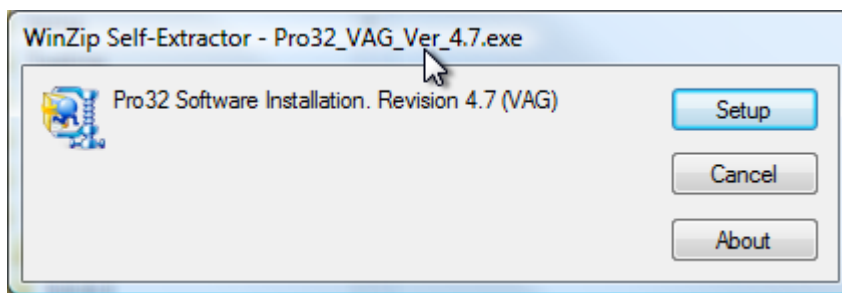
Software Installation Instructions Pro32 VAG (Portal Install)

This document outlines the installation process for Pro32 Software, specifically the VAG release portal version to be downloaded in the field as a self-extracting ZIP file.

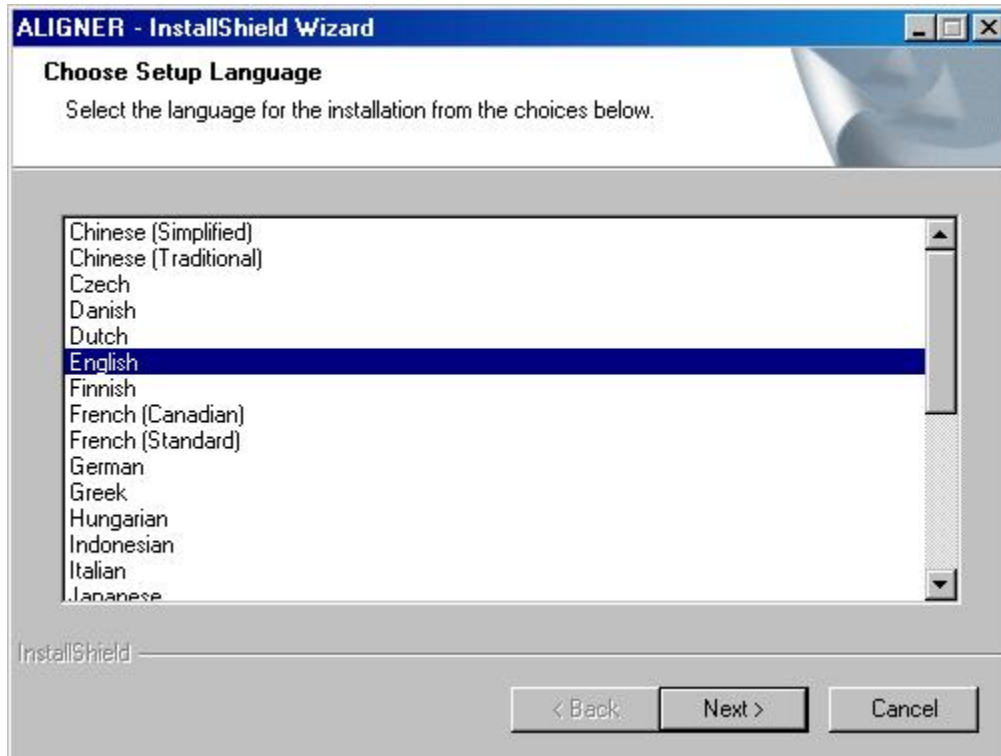
After downloading the self-extracting ZIP file from the portal, and copying to the aligner, double-click the self-extracting EXE file. **See example below.**



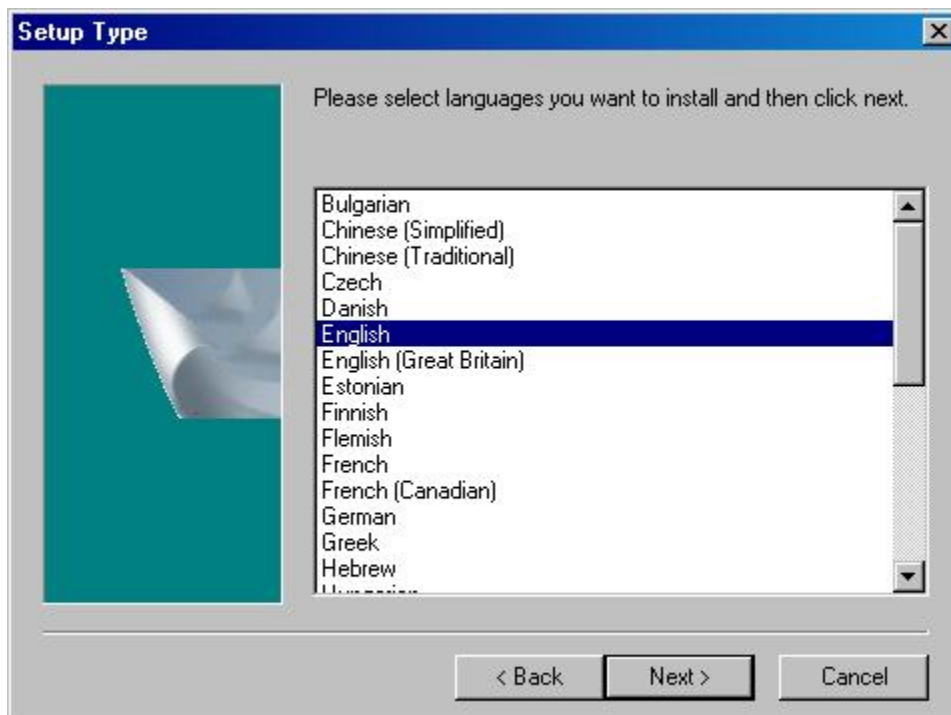
This will open the file to begin the extraction process. Press the "Setup" button and the dialog will show the unzip progress.



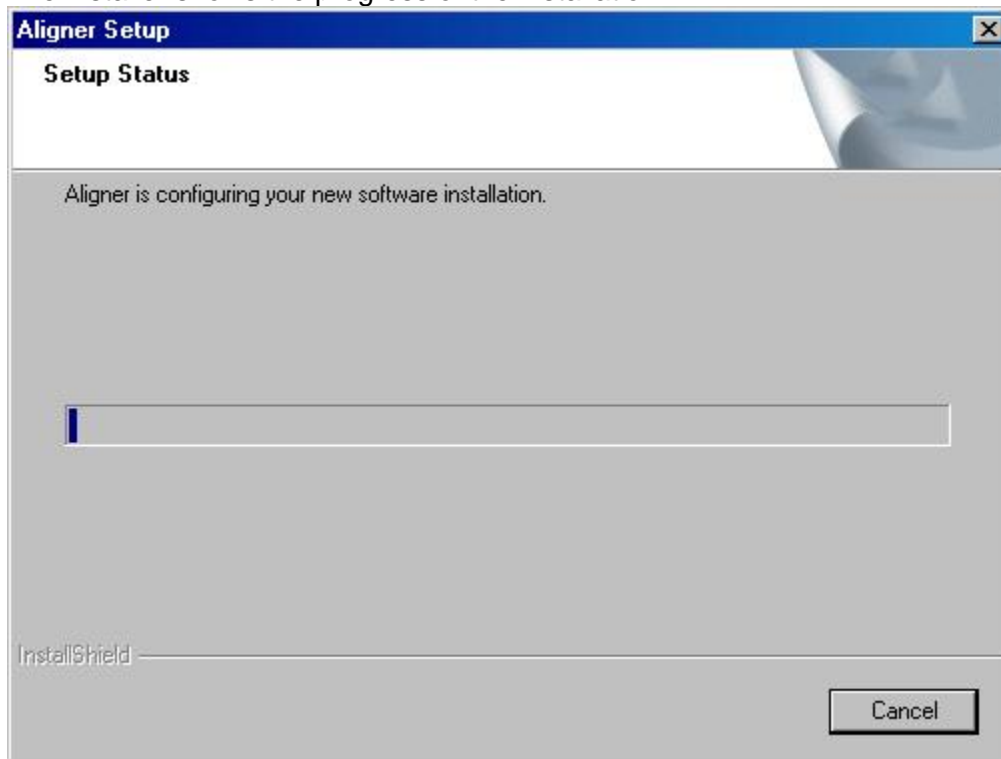
After the ZIP extracts, it will automatically start the Pro32 installer. Select the setup language in the first screen of the installer process and press Next to continue.



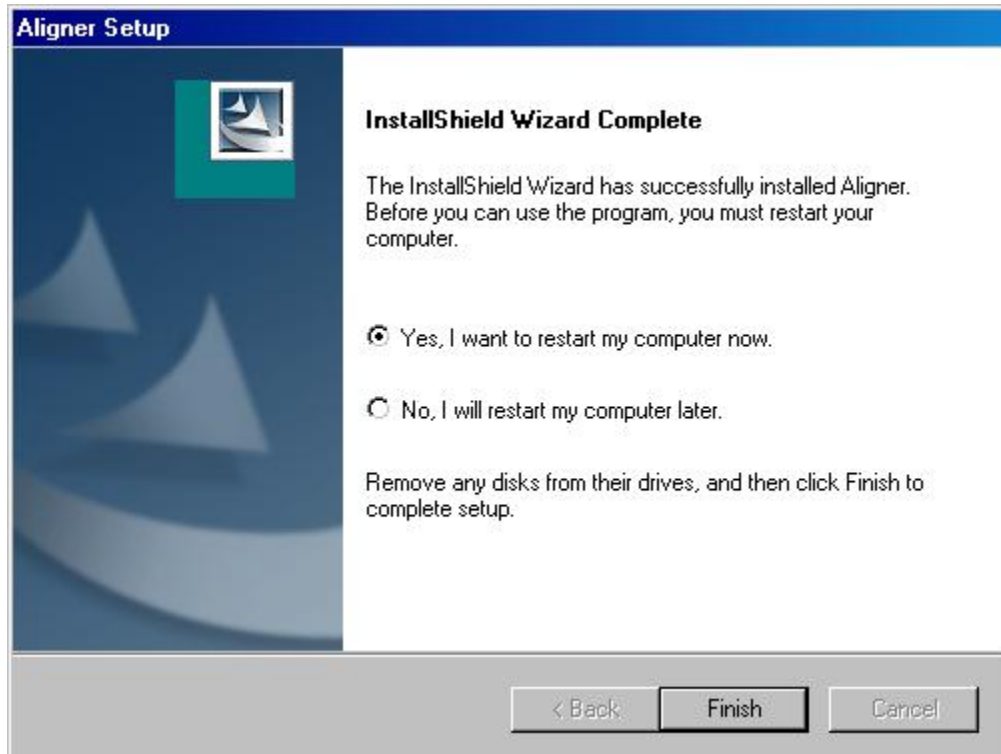
Select which languages (one or many) you would like installed for the software and then press Next to continue.



The installer shows the progress of the installation



When the installer completes, it will request to restart the computer. Select "Finish".



After the PC restarts, it will request to perform the install of video CODEC's. Select "Next" to continue. Once it is finished, it will finish booting into Windows.

The user can confirm the version of the software by using the "About" button on the toolbar of Pro32.

