



---

# SERVICE BULLETIN

---

Classification: HA15-001c	Reference: NTB15-045c	Date: August 11, 2016
------------------------------	--------------------------	--------------------------

---

## 2014-2016 ROGUE; MANUAL HVAC IMPROPER OPERATION

This bulletin has been amended. An APPLIED VIN section has been added.  
No other changes have been made. Please discard all previous versions.

**APPLIED VEHICLES:** 2014-2016 Rogue (T32) - Equipped with Manual HVAC system

**APPLIED VIN:** VINs beginning with "5N1AT2" and "KNMAT2" **ONLY**

**NOTE:** This bulletin does not apply to the Rogue Select (S35)

### IF YOU CONFIRM

There are no HVAC DTCs stored,

**and**

One of the following conditions is occurring:

- Air temperature from the HVAC vents does not match the temperature setting (warm air is discharged when cold is selected, or vice versa).

**or**

- Air is discharged from the incorrect location. For example, vent is selected but 100% of air is discharged to the foot or defrost.

**NOTE:** If HVAC DTC(s) are stored, this bulletin does not apply. Refer to the Electronic Service Manual for further information.

### ACTION

Use CONSULT-III plus (C-III plus) to perform Door Motor Starting Position Reset.

Nissan Bulletins are intended for use by qualified technicians, not 'do-it-yourselfers'. Qualified technicians are properly trained individuals who have the equipment, tools, safety instruction, and know-how to do a job properly and safely. NOTE: If you believe that a described condition may apply to a particular vehicle, DO NOT assume that it does. See your Nissan dealer to determine if this applies to your vehicle.

## SERVICE PROCEDURE

1. Connect the CONSULT PC to the vehicle with the plus VI.
2. Start C-III plus.
3. Start the engine.
  - **Keep the engine running during this procedure.**

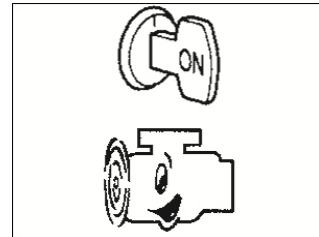


Figure 1

4. Navigate C-III plus to HVAC > Work Support.
5. Select **Door Motor Starting Position Reset**.
6. Select **Start**.

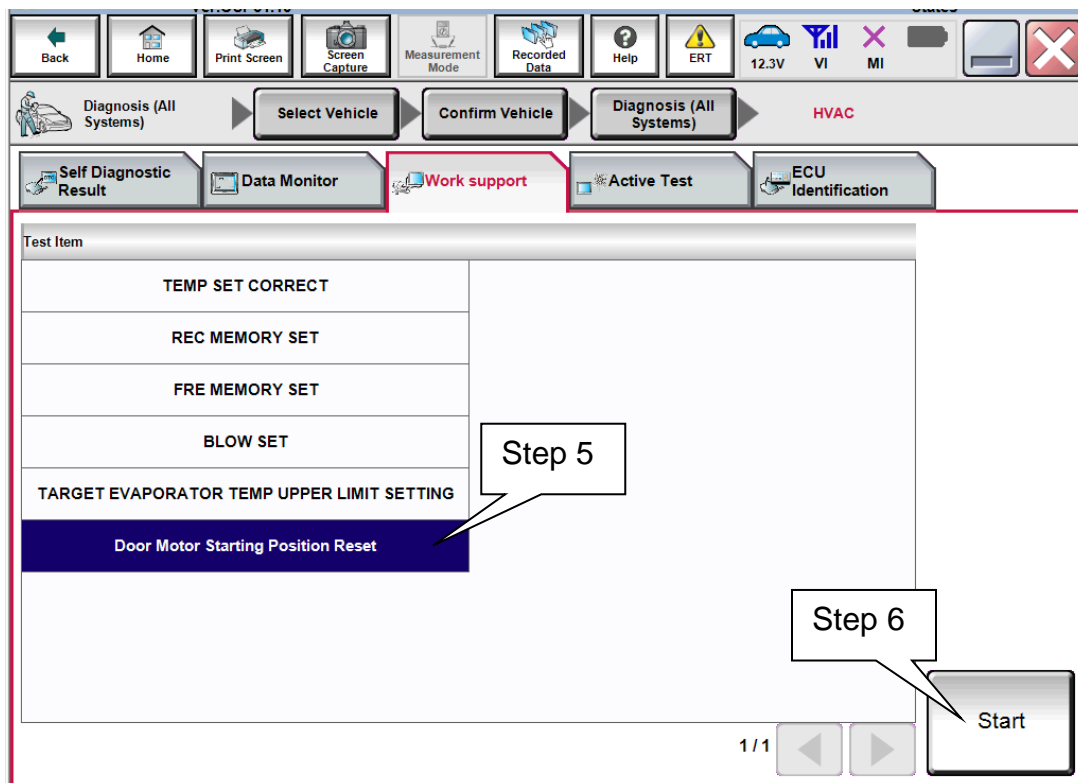


Figure 2

7. Select **Start**, to start the Door Motor Starting Position Reset.

- Keep the ignition ON and the engine running.

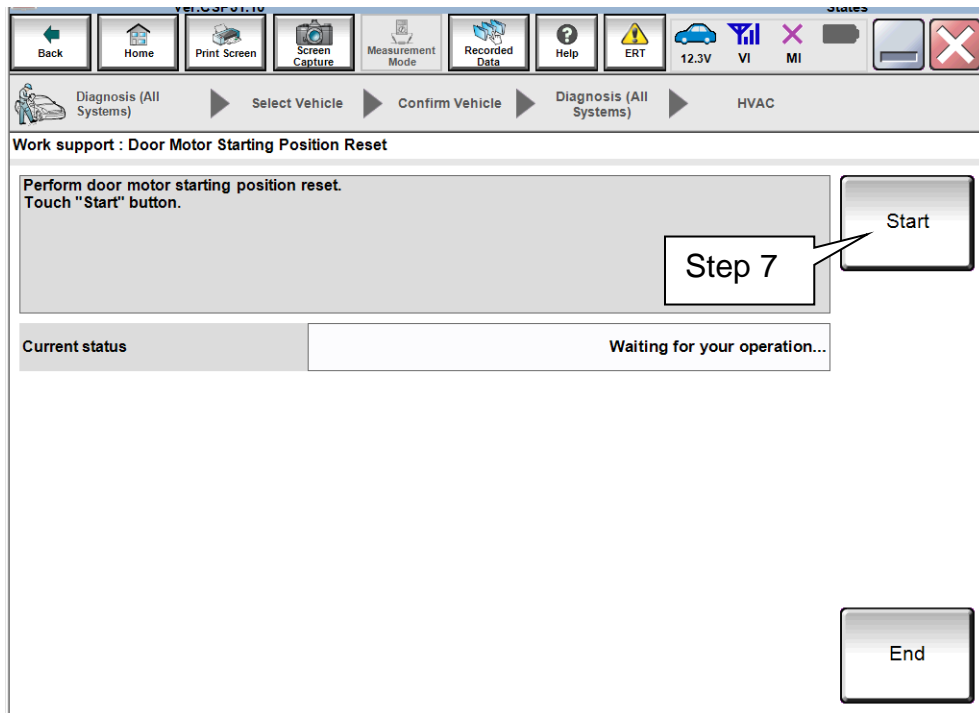


Figure 3

8. Wait for the Door Motor Starting Position Reset to complete (about 30 seconds).

9. Select **End**.

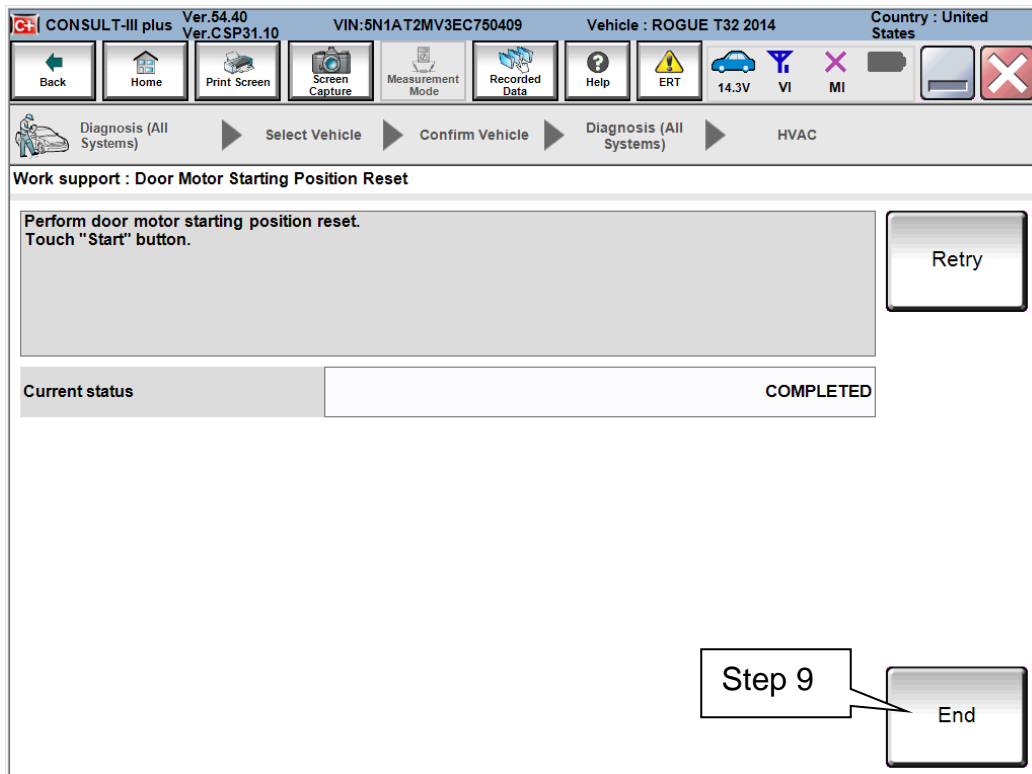


Figure 4

10. Confirm the HVAC controls now operate correctly.

- With the A/C ON, confirm outlet air temperature matches temperature setting at mid-point, full warm, and full cold.
- Confirm outlet air is discharged from the selected position: Vent, Floor, Defrost, and Bi-level.

11. Turn the ignition OFF.

12. Disconnect C-III plus from the vehicle.

13. Re-start the engine.

14. Again, confirm the HVAC controls operate correctly.

- With the A/C ON, confirm outlet air temperature matches temperature setting at mid-point, full warm, and full cold.
- Confirm outlet air is discharged from the selected position: Vent, Floor, Defrost, and Bi-level.

15. Turn the ignition OFF.

**END**

## **CLAIMS INFORMATION**

**Submit a Primary Operation (PO) type line claim using the following claims coding:**

<b>DESCRIPTION</b>	<b>OP CODE</b>	<b>SYM</b>	<b>DIA</b>	<b>FRT</b>
Perform HVAC Door Motor Starting Position Reset	TX43AA	ZE	32	0.2 hrs.

