



GROUP
ELE

MODEL
2017MY
Sorento (UMa)

NUMBER
116

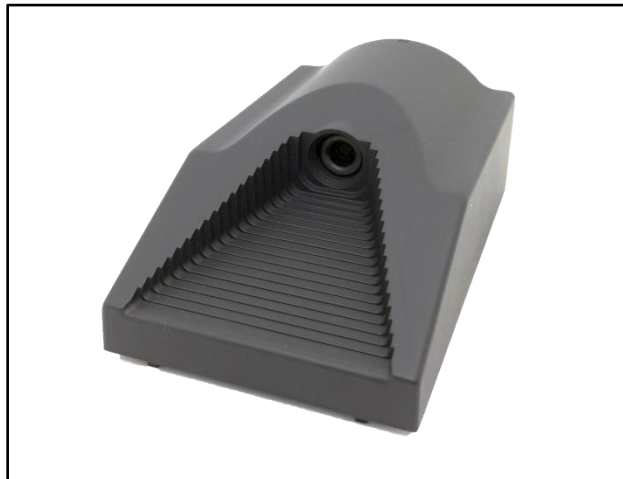
DATE
September 2016

TECHNICAL SERVICE BULLETIN

SUBJECT: SERVICE ACTION: LANE DEPARTURE WARNING
SYSTEM DTC C180508 (SA243)

This bulletin provides information related to the Lane Departure Warning System (LDWS) on some 2017MY Sorento (UMa) vehicles, produced from April 5, 2016 to September 10, 2016, which may exhibit a LDWS malfunction with DTC: C180508 and/or an unsecured LDWS camera. Follow the procedure below to inspect and if necessary, reattach the LDWS camera and/or calibrate the LDWS.

C180508: LKAS CAN Signal Error



* NOTICE

A Service Action is a repair program without customer notification that is performed during the warranty period. Any dealer requesting to perform this repair outside the warranty period will require DPSM approval.

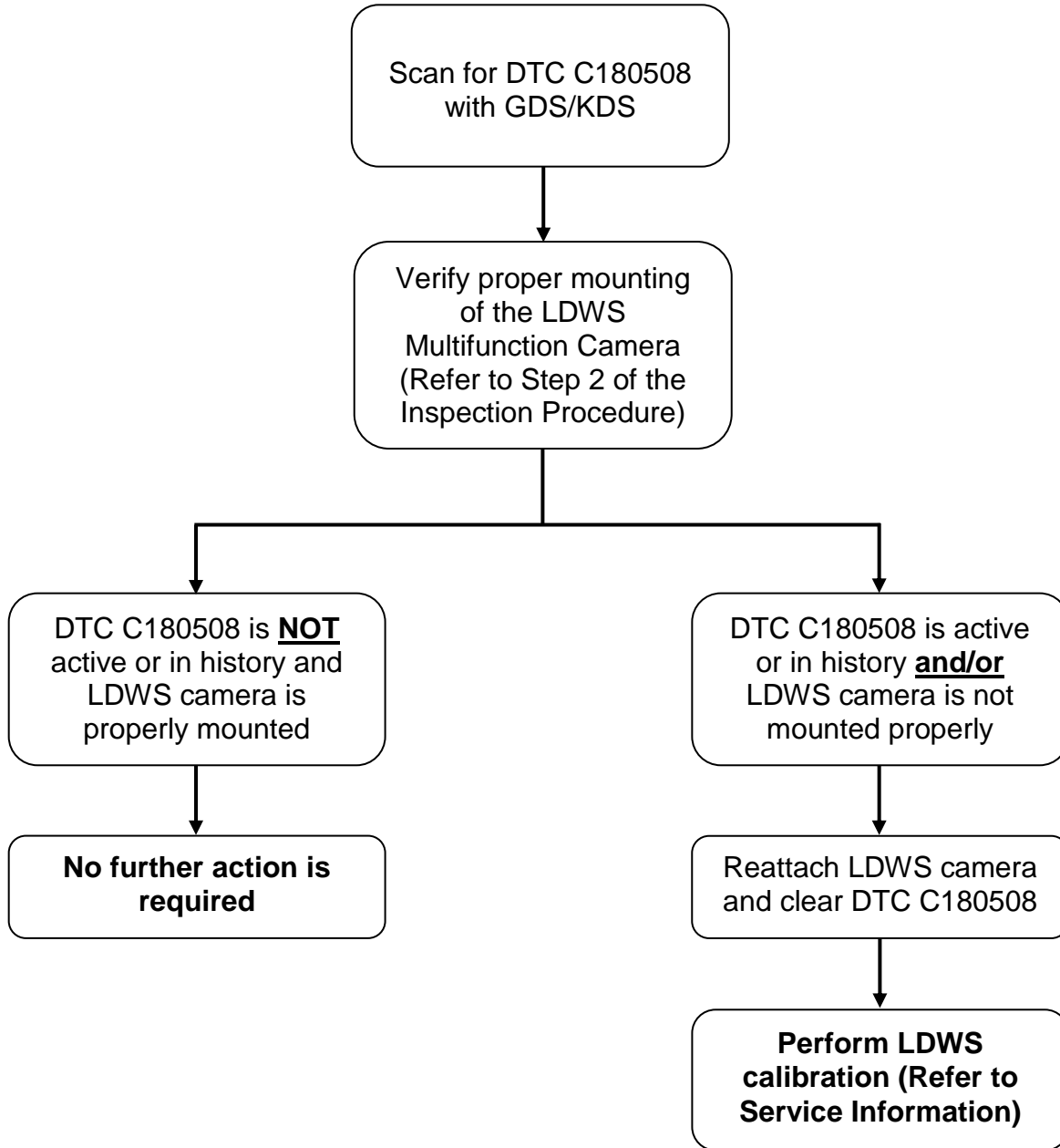
Repair status for a VIN is provided on WebDCS (Service> Warranty Coverage> Warranty Coverage Inquiry> Campaign Information). Not completed Recall / Service Action reports are available on WebDCS (Consumer Affairs> Not Completed Recall> Recall VIN> Select Report), which includes a list of affected vehicles.

This issue number is SA243.

File Under: <Electrical>

Circulate To: General Manager Service Manager Parts Manager
 Service Advisors Technicians Body Shop Manager Fleet Repair

Diagnostic Flowchart:



*** NOTICE**

Do not replace the LDWS camera for this concern. Any associated claims for LDWS camera replacement are subject to review and chargeback.

SUBJECT: LANE DEPARTURE WARNING SYSTEM DTC C180508 (SA243)**Inspection Procedure:**

1. Scan for DTC C180508 in the LDWS using a GDS/KDS.

C180508: LKAS CAN Signal Error

- If DTC **is active** or in history, proceed to step 2 below **and** perform the Calibration Procedure on page 4.
- If DTC **is NOT active** or in history, proceed to step 2 below.

2. Remove the LDWS center cover (A) and outer cover (B) then lightly pull down on the camera to inspect the mounting of the LDWS camera.

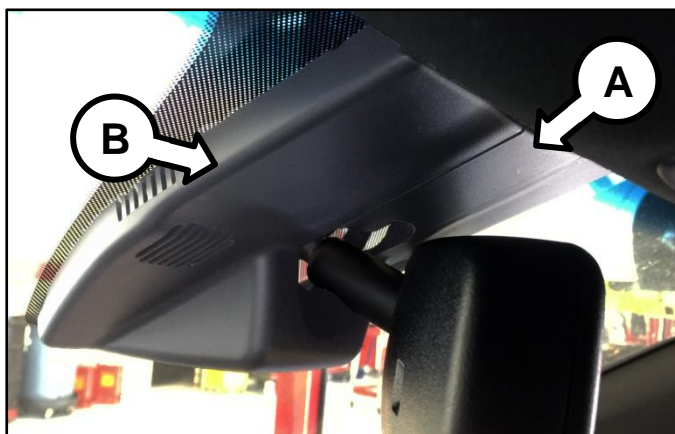
- If the camera **is** properly mounted, no further action is required. Reinstall covers in reverse order of removal.
- If the camera **is NOT** properly mounted, proceed to the Reattachment and Calibration Procedure on page 4.

*** NOTICE**

Covers (A) and (B) are clipped in. Carefully pull down at the edges to remove.

**CAUTION**

Use a non-marring trim removal tool (such as Snap-on® P/N PBN5 or equivalent) to avoid damaging trim pieces.

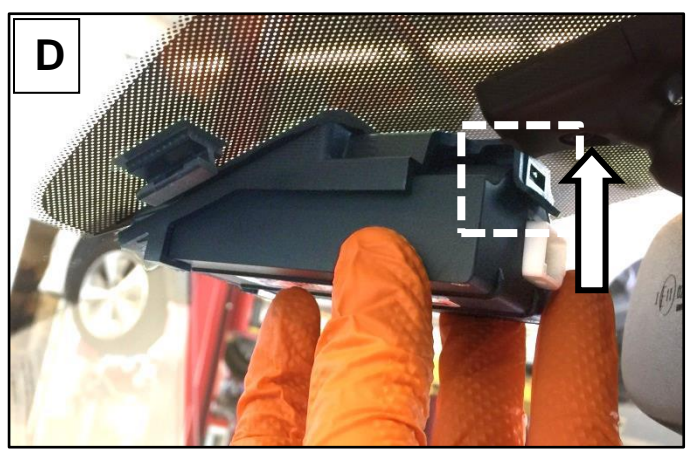
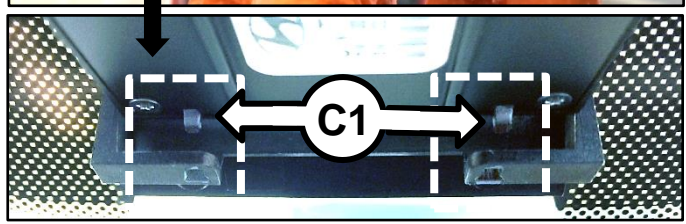
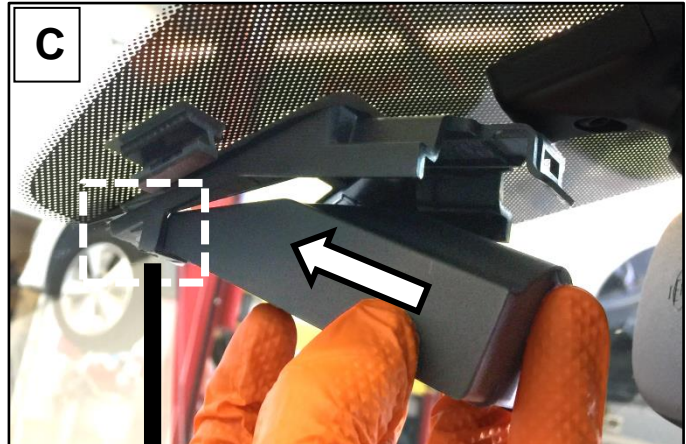


Reattachment and Calibration Procedure: (if camera is NOT properly mounted and/or DTC C180508 is active or in history)

1. If the camera is not mounted properly, reattach the camera by sliding the front of the camera into the clip (C) and pushing firmly up on the back of the camera into the clip (D). Lightly pull down on the camera to verify proper engagement and mounting.

*** NOTICE**

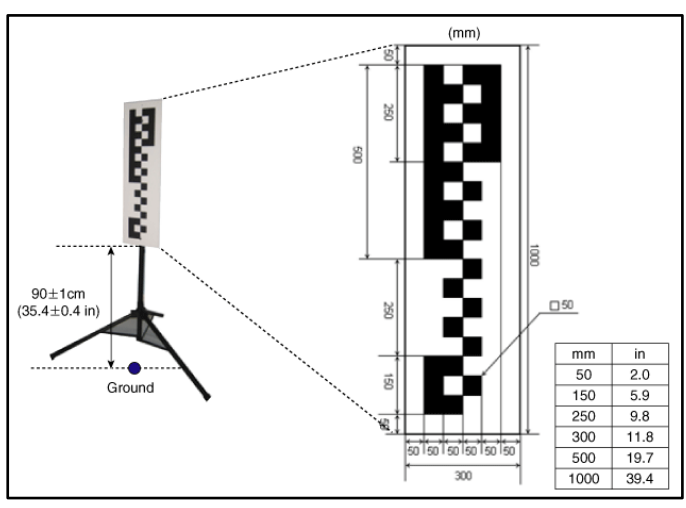
Ensure the tabs (C1) on the LDWS camera are hooked into the slots in the mounting bracket.



2. After reattaching the camera, perform the LDWS calibration using SST 09890 3V100 by referring to the “Body Electrical System → Lane Departure Warning System (LDWS) → Repair Procedures” chapter in the applicable Workshop Manual on KGIS.

*** NOTICE**

Contrary to step 2 of the LDWS repair procedure on KGIS, a wheel alignment is **NOT** required before calibration of the LDWS camera on vehicles applicable to this Service Action.



SUBJECT: LANE DEPARTURE WARNING SYSTEM DTC C180508 (SA243)

AFFECTED VEHICLE RANGE:

Model	Production Date Range
Sorento (UMa)	April 5, 2016 to September 10, 2016

WARRANTY INFORMATION:

Claim Type	Causal P/N	Qty.	N Code	C Code	Repair Description	Labor Op Code	Op Time	Replacement P/N	Qty.
V	95790 C6500	0	N99	C99	(SA243) LDWS Camera Inspection	160A32R0	0.4	95790 C6500	0
					(SA243) LDWS Camera Inspection, Reattachment, & Calibration	160A32R1	0.6	95790 C6500	0

*** NOTICE**

If a malfunction with the LDWS still occurs after two attempts of calibration, contact Kia Techline for further assistance.

*** NOTICE**

VIN inquiry data for this repair is provided for tracking purposes only. Kia retailers should reference SA243 when accessing the WebDCS system.