

**HYUNDAI**NEW THINKING.
NEW POSSIBILITIES.**Technical Service Bulletin**

GROUP

CAMPAIGN

NUMBER

16-01-050

DATE

NOVEMBER 2016

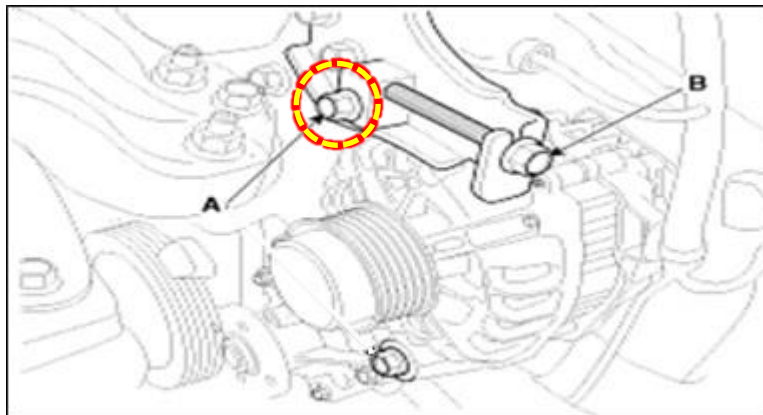
MODEL(S)

Sonata (LFa)**SUBJECT:** TOP ALTERNATOR MOUNTING BOLT REPLACEMENT (SERVICE CAMPAIGN TTT)*** IMPORTANT******* Dealer Stock and Retail Vehicles *****

Dealers must perform this Service Campaign whenever an affected vehicle is in the shop for any maintenance or repair.

When a vehicle arrives at the service department, access Hyundai Motor America's "Warranty Vehicle Information" screen via WEBDCS to identify open Campaigns.

Description: Certain Sonata vehicles equipped with the 1.6L Turbo engine have a manual alternator belt tensioner system. The top alternator mounting bolt (A in the diagram) may break over time if it is tightened over specification and could result in illumination of the battery warning light and/or the engine overheating in some cases. This bulletin describes the procedure to replace the top alternator mounting bolt.

**Applicable Vehicles:**

2015-2017 MY Sonata (LFa) vehicles equipped with the 1.6L Turbo engine

Part Information:

Part Name	Part Number	Qty.
BOLT	11405-08406-K	1

Circulate To: General Manager, Service Manager, Parts Manager, Warranty Manager, Service Advisors, Technicians, Body Shop Manager, Fleet Repair

Warranty Information:

Op Code	Operation	Op Time
60CA22R0	Bolt replacement	0.3 M/H

NOTE 1: Submit Claim on Campaign Claim Entry Screen

NOTE 2: If a part is found in need of replacement while performing Service Campaign TTT and the affected part is still under warranty, submit a separate claim using the same Repair Order. If the affected part is out of warranty, submit a Prior Approval Request for goodwill consideration prior to performing the work.

NOTICE

Ensure the vehicle is in Park, the key or key fob is removed from the vehicle, and the parking brake is set.

CAUTION

Ensure the engine is cool before any work is performed as the engine compartment temperature is high after vehicle operation and could cause physical injury.

Service Procedure:

1. Locate the belt tensioner on the alternator.



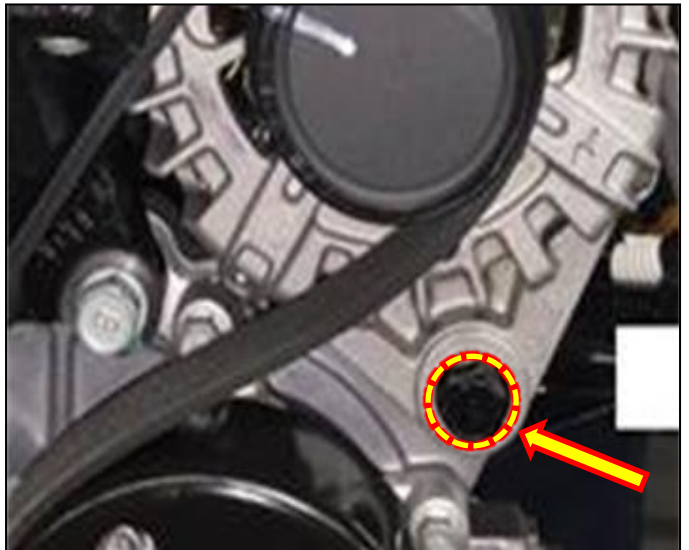
2. Mark the threads at the location shown for reference later.



3. Loosen the top alternator mounting bolt.



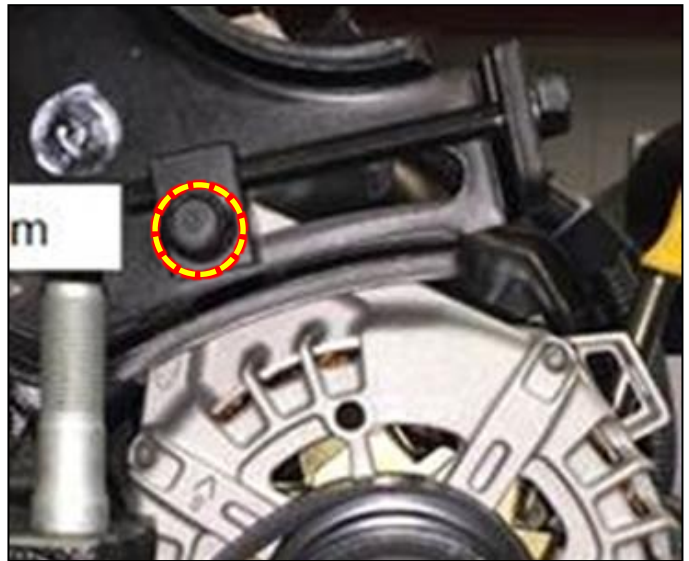
4. Loosen the bottom alternator bolt.



5. Loosen the tension on the belt.



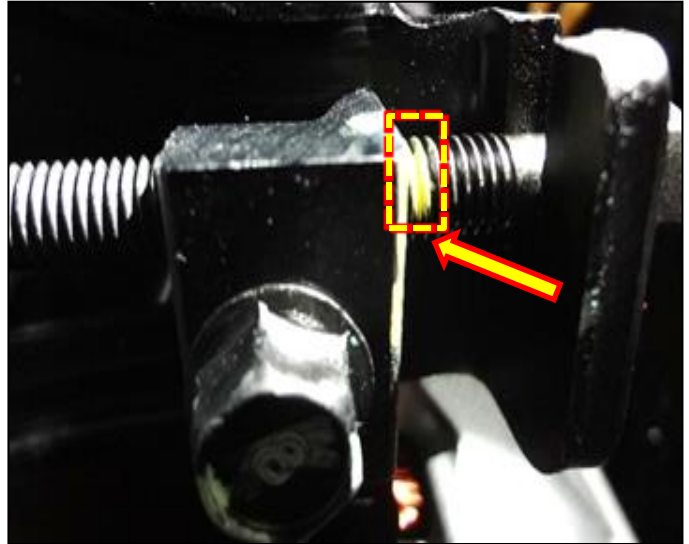
6. Remove the top alternator mounting bolt.



7. Replace with a new bolt. Do not tighten fully.



8. Tighten the belt tensioner bolt back to the original mark on the threads from Step 2.



9. Verify the belt has the proper tension and adjust it if needed.

⚠ CAUTION

Do not overtighten the alternator mounting bolts. Overtightening could lead to premature bolt breakage.

10. After the belt tension has been properly adjusted, tighten the top alternator mounting bolt.
Torque: 26.5 ~ 37.3 Nm (19.5 ~ 27.5 lb-ft)
11. Tighten the bottom alternator bolt.
Torque: 29.4 ~ 41.2 Nm (21.7 ~ 30.4 lb-ft)
12. Start and run the engine to ensure proper operation.