



HYUNDAI | NEW THINKING.
NEW POSSIBILITIES.

Technical Service Bulletin

GROUP
CAMPAIGN

NUMBER
16-01-066

DATE
DECEMBER 2016

MODEL(S)
SANTA FE (NC)

SUBJECT:

**FUEL FILLER DOOR HOUSING REPLACEMENT
(SERVICE CAMPAIGN T1K)**

★ IMPORTANT

*** Dealer Stock and Retail Vehicles ***

Dealers must perform this Service Campaign on all affected vehicles prior to customer retail delivery and whenever an affected vehicle is in the shop for any maintenance or repair.

When a vehicle arrives at the service department, access Hyundai Motor America's "warranty vehicle information" screen via WEBDCS to identify open campaigns.


Description: On certain 2015 Santa Fe (NC) the fuel filler door may not function properly due to improper installation of the fuel filler door housing. This may affect the fuel door opening and/or closing functionality.

This bulletin describes the procedure to replace the fuel filler door housing for the Santa Fe (NC).



Applicable Vehicles: Certain 2015 Santa Fe (NC)

PARTS INFORMATION:

PART IMAGE	PART NUMBER	DESCRIPTION
	69513B8000QQH	FUEL FILLER DOOR HOUSING

⚠ CAUTION

Wear protective goggles and gloves for protection when performing the procedures in this bulletin.

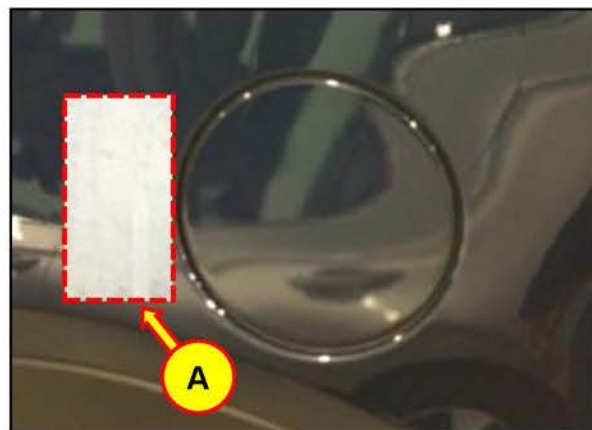
WARRANTY INFORMATION:

MODEL	OPCODE	OPERATION	OPTIME	CAUSAL PART	NATURE CODE	CAUSE CODE
Santa Fe (NC)	60C091R0	FUEL FILLER DOOR HOUSING REPLACEMENT	0.3 M/H	69513-B8000	I11	ZZ3

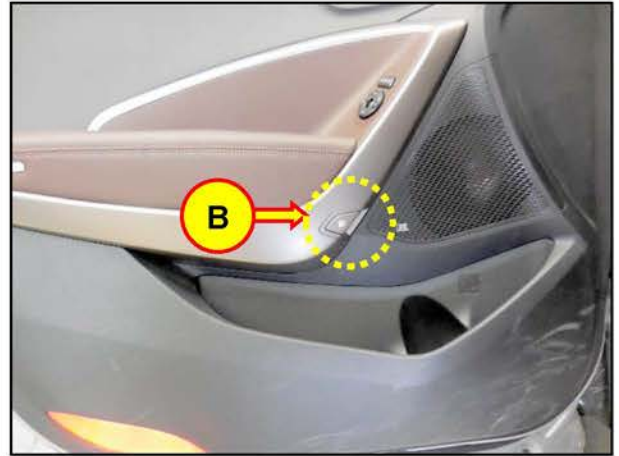
NOTE: Submit Claim on Campaign Claim Entry Screen

SERVICE PROCEDURE

1. Install a protective tape (A) on the side panel next to the fuel filler door to prevent it from getting scratched.
 - Protective tape size: 50 x 100 mm (2 inch x 4 inch)



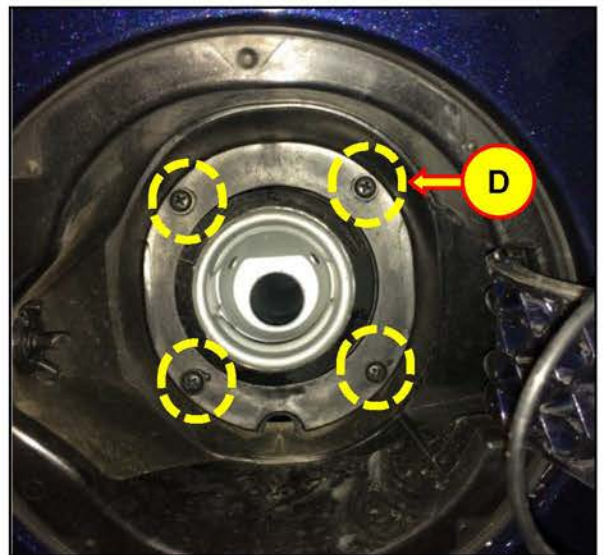
2. Pull the fuel door switch (B) to open the fuel filler door.



3. Open the fuel filler door cap (C) and engage the cap in the fuel filler door pocket.

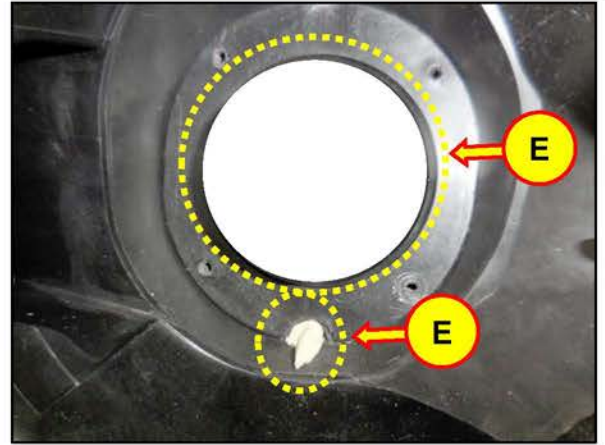


4. Loosen the fuel filler door housing mounting screws (D).



NOTE:

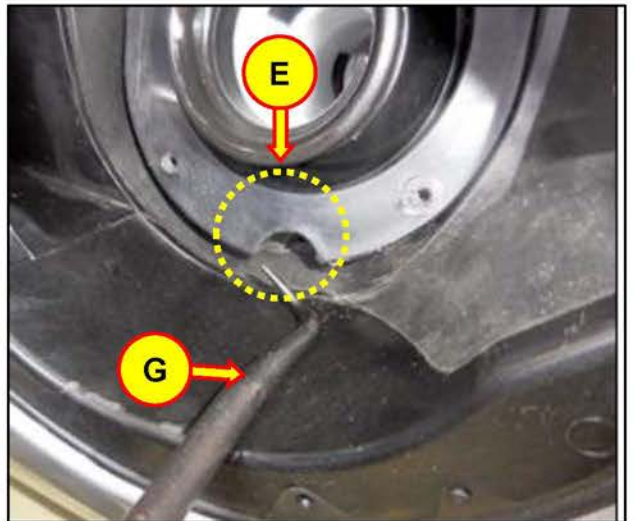
When loosening/tightening the screws, cover the housing hole (E) and the fuel filler hole (E) with a shop towel to prevent the screw from falling inside the hole.



5. Rotate the actuator lock pin (F) counterclockwise to remove it.



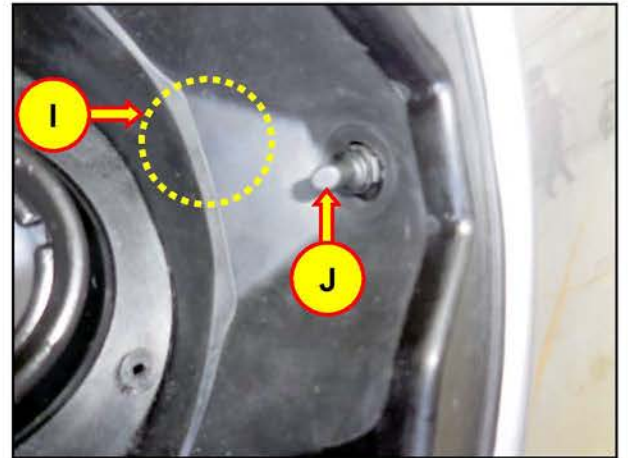
6. Insert an angled pick tool (G) into the lower hole (E) and pull the tool to remove the retainer (H).



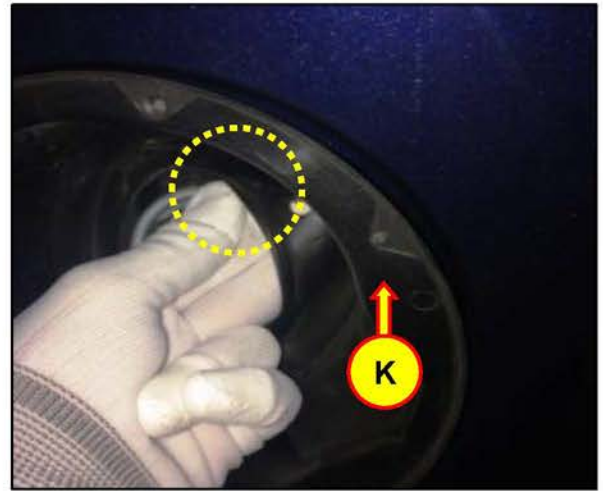


7. Pull the circled area of the housing (I) and raise it to secure the work space.

NOTE:
Carefully pull the housing without damaging the actuator rod (J).



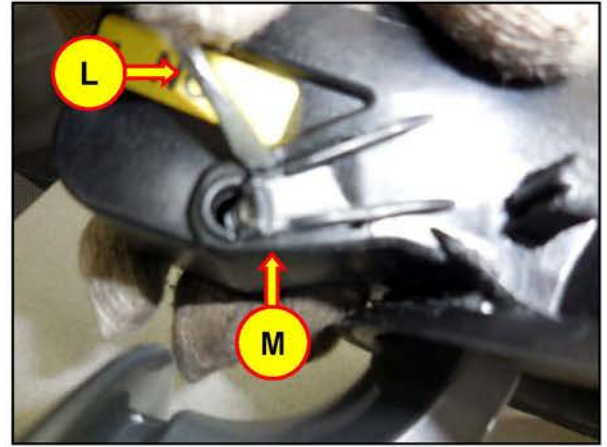
8. Insert your hand between the housing (K) and the fuel filler neck and then pull the housing as shown.



9. Remove the housing (K) and place it on top of a soft cloth to prevent scratches to the painted surface of the fuel filler door.



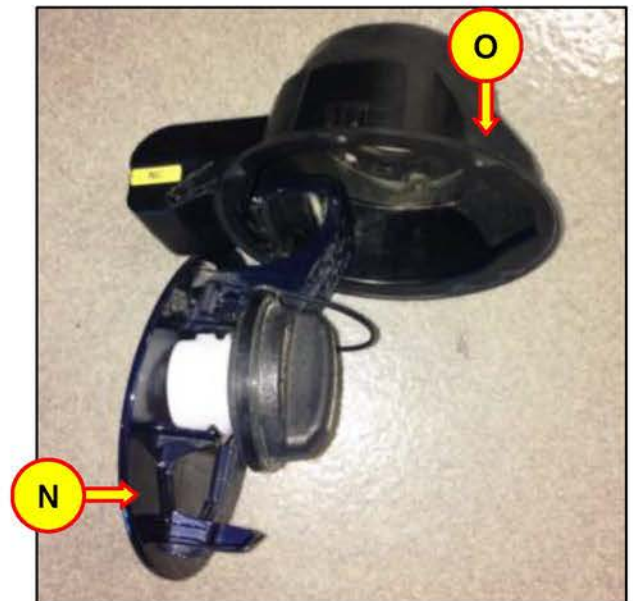
10. Release the fuel filler door lock (M) with a flat-headed screwdriver (L).



11. Remove the fuel filler door (N) from the housing.



12. Install the removed fuel filler door (N) to the new housing (O).

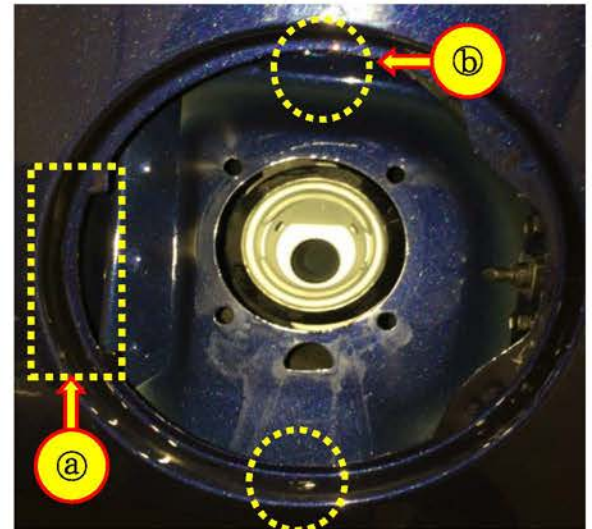


NOTE:

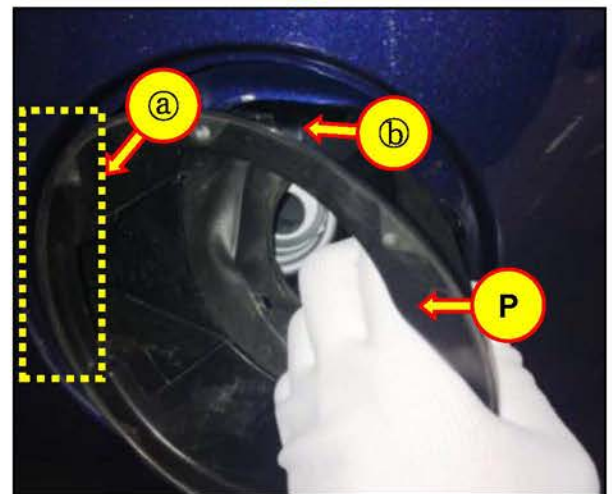
When installing the fuel filler door, push the fuel filler door to lock guide until lock sound is heard and felt.

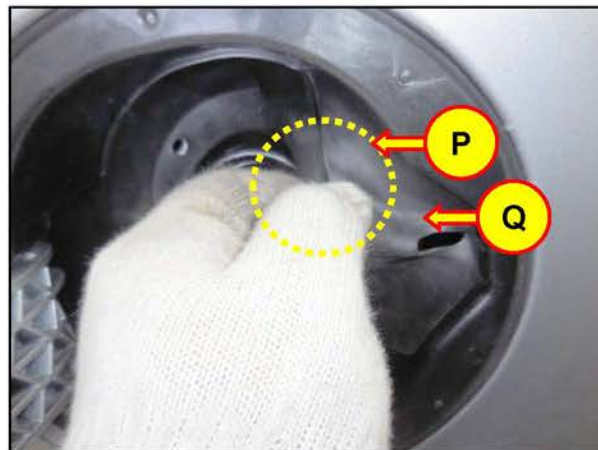
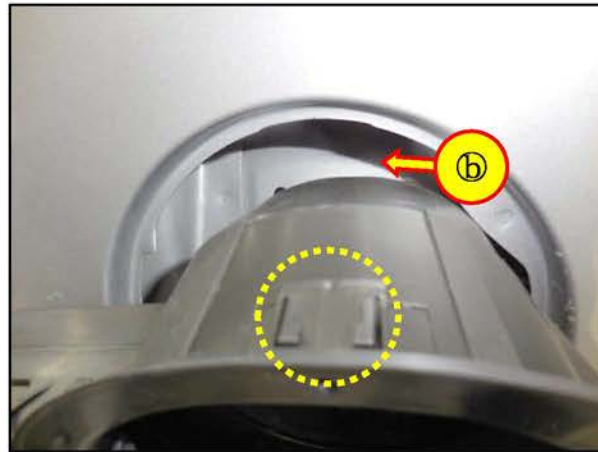


- * (a): Door hinge assembly location
- * (b): housing mounting clips assembly location



13. Install the housing (P) after aligning the (a), (b) sides and raise the housing (P) to not interfere with the actuator rod (Q).

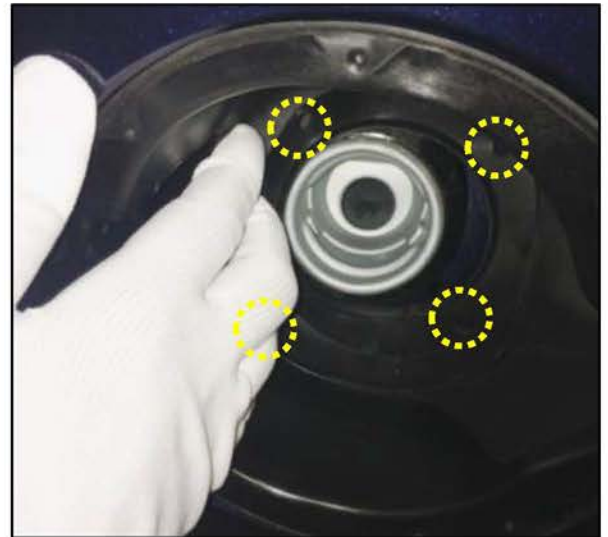




NOTE:
When installing the housing, evenly push the inlet side.



14. Align the screw mounting hole location after rotating the door hinge.



15. Cover the fuel filler hole and the housing hole with a shop towel and install the retainer and tighten the screws.

Ensure proper operation of the fuel filler door by opening and closing the fuel filler door a few times.

Service procedure is now complete.

