



Engine Control Unit Software Calibration Update  
 Models: Model Year 2016 Hypermotard 939; Hypermotard 939 SP;  
 Hyperstrada 939 (CAL and CDN versions)  
**Technical Service Bulletin SRV-TSB-16-003**

Date: Friday, July 22, 2016  
 To: Dealer Principal, General Manager, Service Manager, North American Dealer Network  
 From: Richard Kenton, Technical Director; Jonathan LaForte, Technical Manager

**Situation**

A new engine control unit software calibration is now available for the above-mentioned model that improves the motorcycle's drivability under all use conditions, and it's idle speed management functionality. This update must be performed on all motorcycles involved.

To download the new engine control unit software version, connect the DDS 2.0 diagnosis instrument to the network and accept the software update or, as an alternative, use the manual "Update Check" function:



The new engine control unit software version has been introduced in the production process starting from the following VIN numbers:

<i>New engine control unit software/calibration VIN numbers</i>		
<i>MODEL VERSION</i>	<i>FROM VIN NO.</i>	<i>NEW ECU SOFTWARE NAME</i>
HYM 939 CAL/CDN	ZDM1YBJS5GB [REDACTED]	8228DUBE
HYM 939 EUR/AUS	ZDMBA00AAGB [REDACTED]	8228DBBE

**Involved Bikes**

You can find the involved VIN numbers in the DCS.

VIN numbers included in the ranges specified in the table below refer to the first and last motorcycle involved; however, not all motorcycles included in such ranges need all updates since they might have already been updated by DMH or during a prior repair under warranty. Always check for any available ECU software updates and any other recalls required for a specific VIN.

<i>INVOLVED BIKES VIN NUMBER RANGES</i>		
<i>COUNTRY VERSION</i>	<i>FROM VIN NO.</i>	<i>TO VIN NO.</i>
CAL	ZDM1YBJS3GB [REDACTED]	ZDM1YBJS5GB [REDACTED]
CDN	ZDM1YBJS5GB [REDACTED]	ZDM1YBJS7GB [REDACTED]

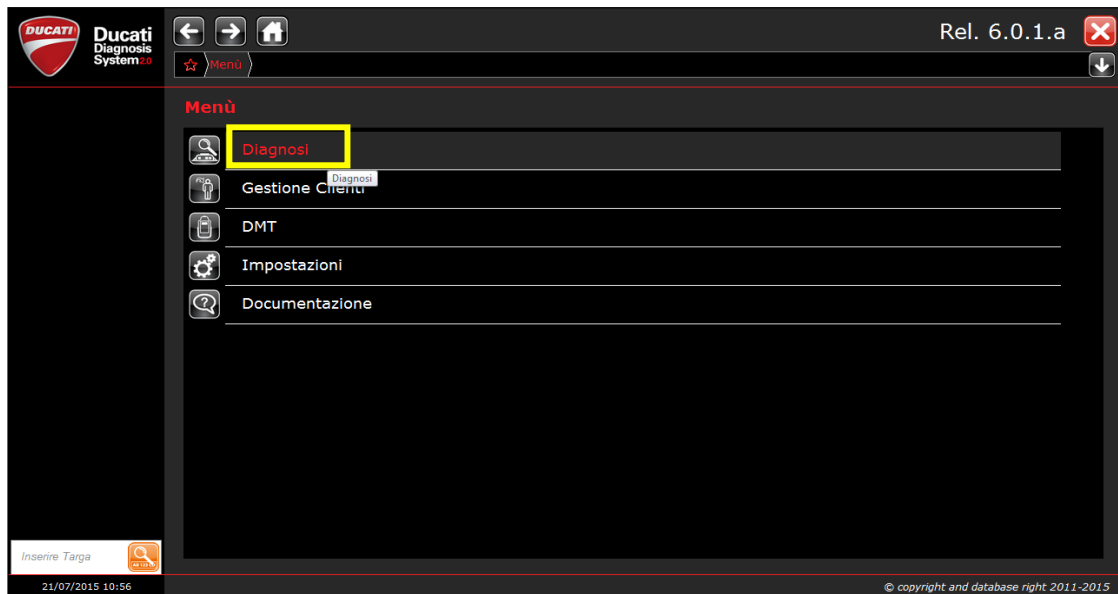


Engine Control Unit Software Calibration Update  
Models: Model Year 2016 Hypermotard 939; Hypermotard 939 SP;  
Hyperstrada 939 (CAL and CDN versions)  
Technical Service Bulletin SRV-TSB-16-003

**Service Solution**

Follow the procedure described below:

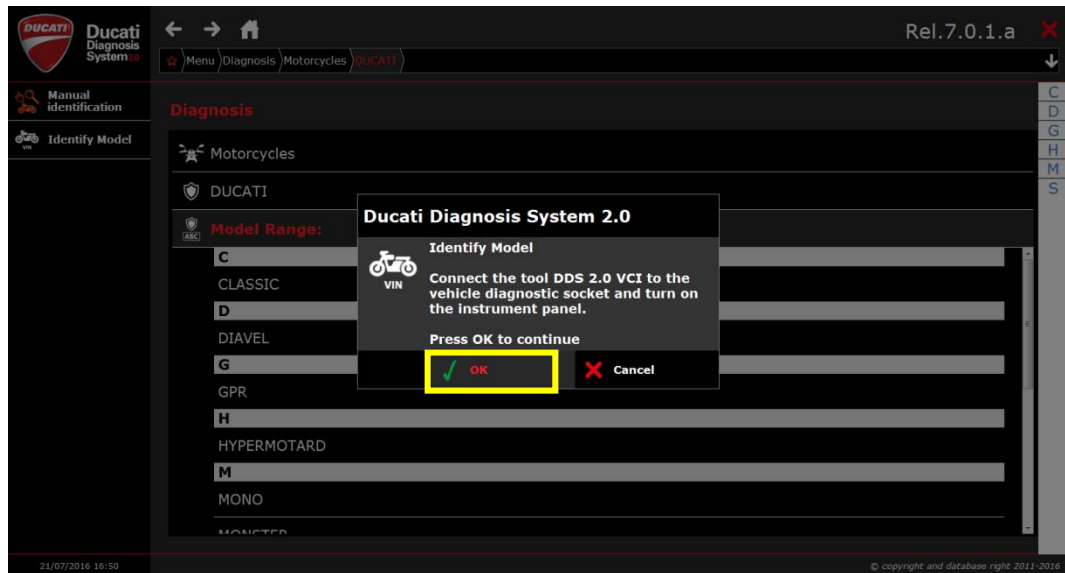
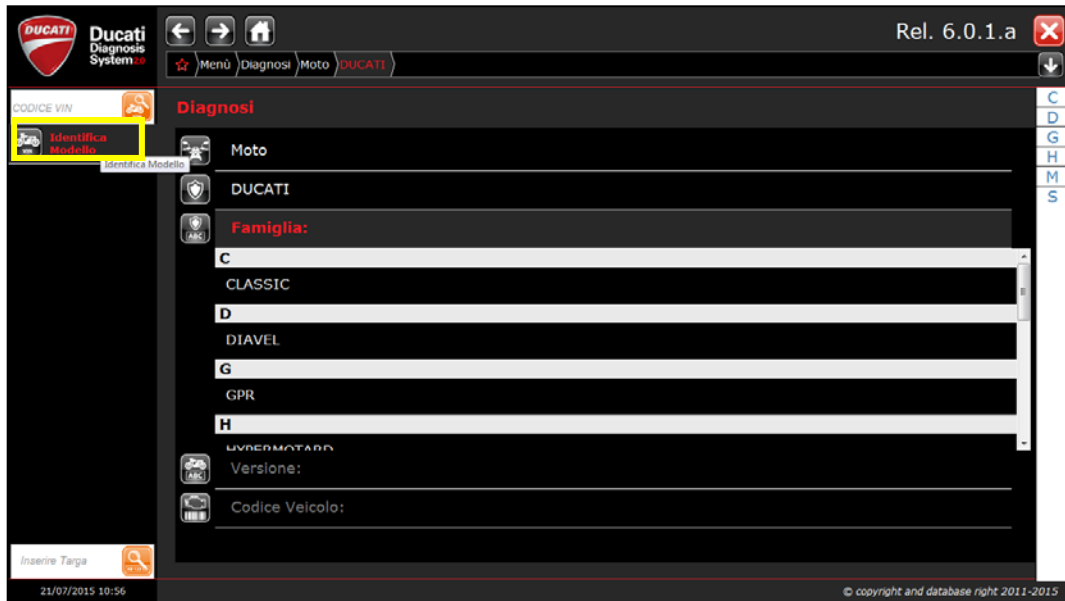
- 1) Connect the DDS 2.0 diagnosis instrument and select "Diagnosis".





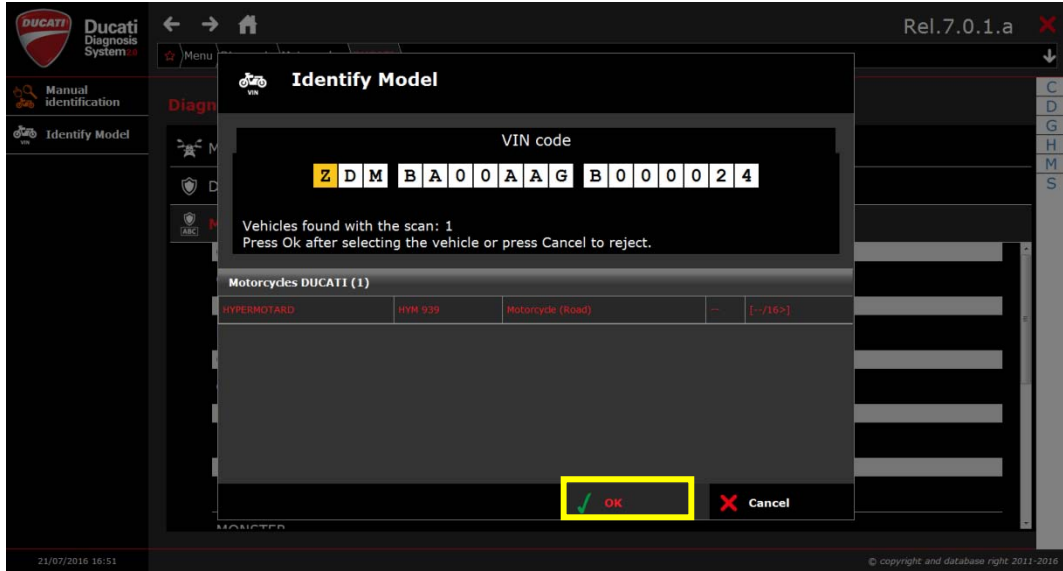
Engine Control Unit Software Calibration Update  
Models: Model Year 2016 Hypermotard 939; Hypermotard 939 SP;  
Hyperstrada 939 (CAL and CDN versions)  
Technical Service Bulletin SRV-TSB-16-003

- 2) Proceed with model automatic identification by selecting "Model identification" or, as an alternative, by selecting the bike data manually.

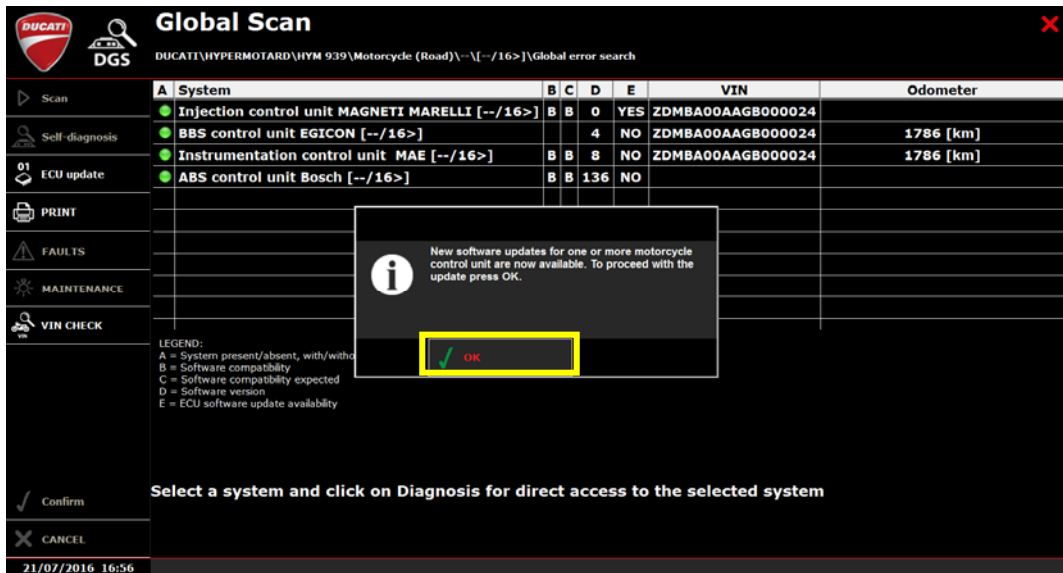




Engine Control Unit Software Calibration Update  
Models: Model Year 2016 Hypermotard 939; Hypermotard 939 SP;  
Hyperstrada 939 (CAL and CDN versions)  
Technical Service Bulletin SRV-TSB-16-003



3) Execute the "Global Scan" function and wait for the scan result.

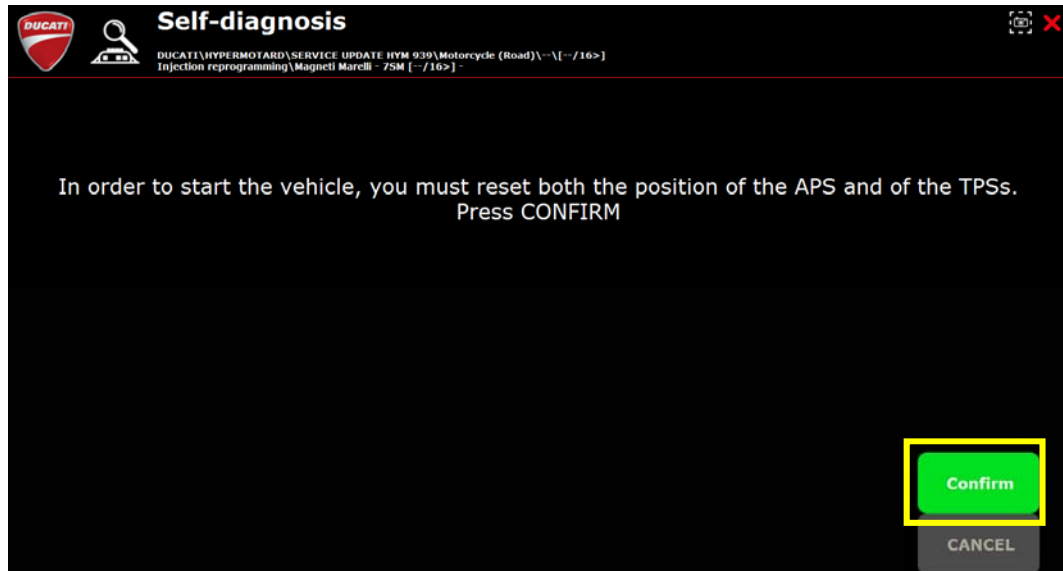


Update the engine control unit by selecting "OK" in the pop-up window and carefully follow the displayed instructions.

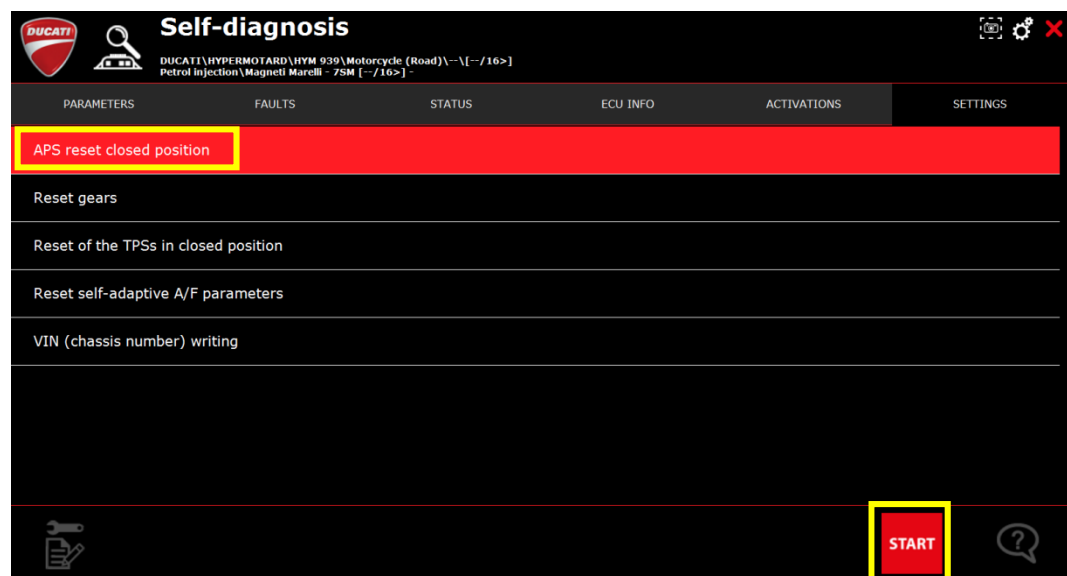


Engine Control Unit Software Calibration Update  
Models: Model Year 2016 Hypermotard 939; Hypermotard 939 SP;  
Hyperstrada 939 (CAL and CDN versions)  
Technical Service Bulletin SRV-TSB-16-003

- 4) Once the update is completed, access the engine control unit "Self-Diagnosis" section.

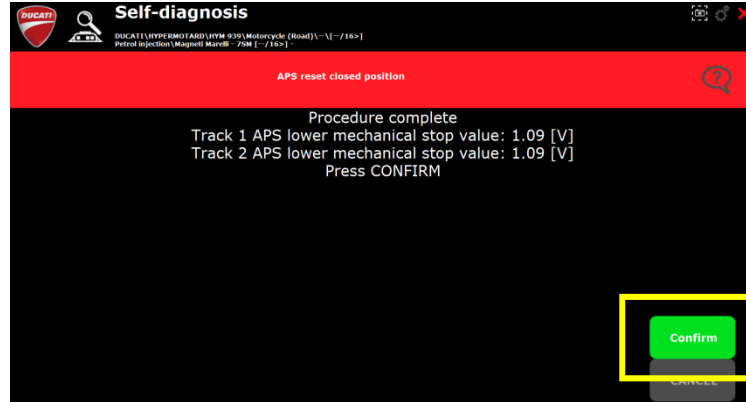


Carry out the **Reset of the APS in closed position** from the "Adjustment" page and carefully follow the displayed instructions.

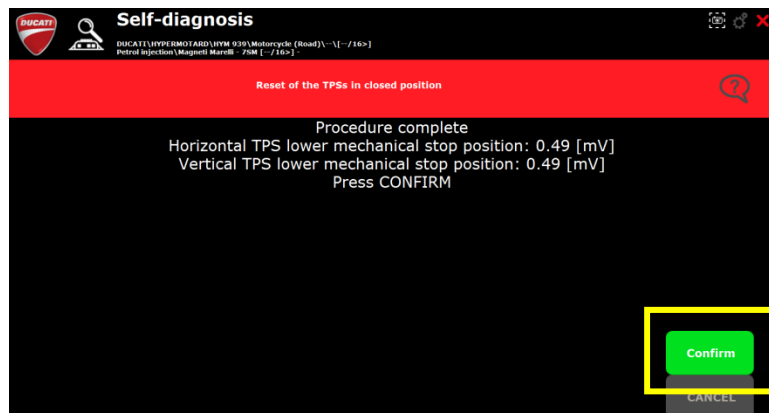
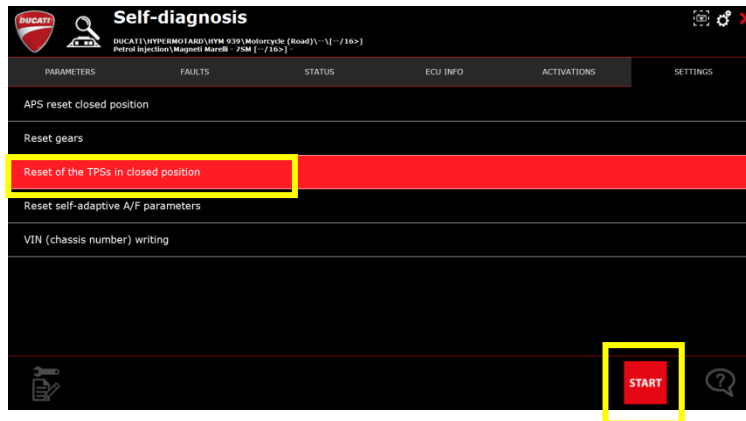




Engine Control Unit Software Calibration Update  
Models: Model Year 2016 Hypermotard 939; Hypermotard 939 SP;  
Hyperstrada 939 (CAL and CDN versions)  
Technical Service Bulletin SRV-TSB-16-003



Carry out the **Reset of the TPSs in closed position** from the "Adjustment" page and carefully follow the displayed instructions.





Engine Control Unit Software Calibration Update  
Models: Model Year 2016 Hypermotard 939; Hypermotard 939 SP;  
Hyperstrada 939 (CAL and CDN versions)  
Technical Service Bulletin SRV-TSB-16-003

***Spare Parts***

No spare parts are needed.

***Warranty***

Engine control unit software update reimbursement will be issued through the standard warranty claim procedure via the section ***Campaigns*** of the NDCS (the request form is already pre-filled).

The above-described procedure has been coded as follows: ***CR123***.

Labor time that will be reimbursed for motorcycle reception, this update, and for submission of the warranty claim is 18 minutes (3 labor units).

***Customers***

In instances where bikes have been previously delivered to final Customers, such customers will be directly asked, by Ducati Motor Holding, to return their motorcycles to Dealerships for the update. Ducati customers will be contacted through a dedicated communication (either by e-mail or standard mail if no e-mail address is available). Customers will then contact your Dealership to establish an appointment for the update. As this operation is quick we request that Dealers allow Customers to wait at the workshop for their bike to be updated.

Please be reminded that all bikes in your stock, and to be delivered to Customers, must be updated during pre-delivery operations, and ALWAYS before delivery to the final Customer. For retailed units, if the update has not been performed upon the motorcycles arrival for service or repairs, it should be performed.

We thank you in advance for your attention and cooperation.

Ducati North America  
Service Department