

Tire Pressure Warning System Initialization

Service Category General

Section Pre-Delivery Service

Market USA

Lexus Supports
ASE Certification 

Applicability

YEAR(S)	MODEL(S)	ADDITIONAL INFORMATION
2017	LX570	

Introduction

2017 model year LX 570 vehicles are equipped with a direct-type Tire Pressure Warning System (TPWS). Each tire (including the spare tire) has a tire pressure warning valve/sensor that measures tire pressure. The data is transmitted to the Tire Pressure Warning System antenna/receiver and then to the Tire Pressure Warning System ECU.

After adjusting ALL tires to the standard air pressure, perform initialization of the Tire Pressure Warning System during Pre-Delivery Service (PDS) according to the procedure outlined below.

Warranty Information

OP CODE	DESCRIPTION	TIME	OPF	T1	T2
N/A	Not Applicable to Warranty	–	–	–	–

Required Tools & Equipment

REQUIRED EQUIPMENT	SUPPLIER	PART NUMBER	QTY
Techstream 2.0*	ADE	TS2UNIT	1
Techstream Lite		TSLITEPDLR01	
Techstream Lite (Green Cable)		TSLP2DLR01	

* Essential SST.

NOTE

- Only ONE of the Techstream units listed above is required.
- Software version 11.10.034 or later is required.
- Additional Techstream units may be ordered by calling Approved Dealer Equipment (ADE) at 1-800-368-6787.

Tire Pressure Warning System Initialization

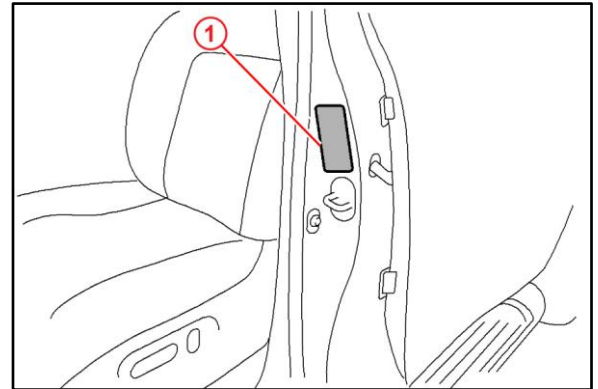
Initialization Procedure

1. Adjust ALL tires (including the spare tire) to the standard tire inflation pressure, as indicated on the Tire and Loading information label located inside the vehicle.

NOTE

- To adjust tire pressure correctly when outside temperature is significantly colder than shop temperature, perform a Health Check using Techstream and select the “Compensation Tire Pressure” checkbox. Compensation pressures will be displayed on the health check results screen.
- Adjust the tire pressure when the tires are cold.

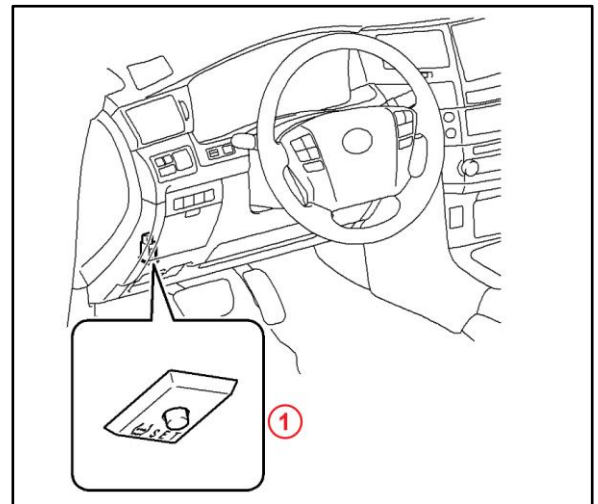
Figure 1.



1	Tire and Loading Information Label
----------	---

2. Cycle the ignition switch to the “IG-ON” position and press and hold the Tire Pressure Warning Reset Switch for at least 3 seconds so that the Tire Pressure Warning light blinks 3 times.

Figure 2.



1	Tire Pressure Warning Reset Switch
----------	---

3. Cycle the ignition switch to the “OFF” position and then to the “IG-ON” position.

Tire Pressure Warning System Initialization

Initialization Procedure (Continued)

4. Check the tire pressure values of ALL the tires using Techstream.

Chassis / Tire Pressure Monitor / Data List

NOTE

- The order in which the data is received is random.
- It can take 2 – 3 minutes for the tire pressure values to be displayed on the Techstream Data List.
- If the signals from ALL the wheels are received and the Data List “ID Tire Inflation Pressure” displays, initialization is completed.
- If initialization has NOT been completed successfully, DTC C2177/77 is stored after a vehicle speed of at least 23 mph (37 km/h) continues for 20 minutes or more. Refer to the Repair Manual for further diagnosis.

5. Remove and discard ID number labels if attached to the wheels.