

REFERENCE:	Nova Bus Manuals
SECTION:	10: Transmission and Control
RS N°:	MQR 7621-886
EFFECTIVE IN PROD.:	N/A

APPLICATION DEADLINE: 2017SE15
CLAIM REFERENCE NUMBER: WB-3773

SUBJECT:	ACU3 Hubner Software Re-programming
JUSTIFICATION:	The communication between allison transmission and ACU3 requires optimization.

LEVEL	DESCRIPTION	DIRECT CHARGES		TIME
		LABOUR	MATERIAL	
1	Reprogram the ACU3 Hubner Software.	Nova Bus	Nova Bus	30 min
2	-	-	-	-

MATERIAL

QTY	PART N°	REV.	DESCRIPTION	REPLACES PART N°
LEVEL 1				
-	-	-	-	-
LEVEL 2				
-	-	-	-	-

DISPOSAL OF PARTS

REMOVED PARTS ARE:	DISCARDED *	RETAINED	* Dispose of the unused parts and the defective parts in accordance with local environmental standards in effect.-
	-	-	

REVISION HISTORY

REV.	DATE	CHANGE DESCRIPTION	WRITTEN BY
NR	2016SE02	Initial release	Kumaraswamy K S

CLIENT	ORDER	ROAD NUMBER		VIN (2NVY/4RKY...)		QTY	PROGRAM	REV.
		FROM	TO	FROM	TO			
SEPTA - Pennsylvania	L724	7300	7301	S92Y1D4500275	S92Y3D4500276	2	ACU_34.42.NOV.TO3.069	D
SEPTA - Pennsylvania	L741	7355	7355	S92L4E4500504	S92L4E4500504	1	ACU_34.42.NOV.TO3.069	D
SEPTA - Pennsylvania	L742	7371	7414	S92L6E4500729	S92L7E4500772	44	ACU_34.42.NOV.TO3.069	D
SEPTA - Pennsylvania	L743	7356	7370	S92L1E4500489	S92L2E4500503	15	ACU_34.42.NOV.TO3.069	D
SEPTA - Pennsylvania	L745	7415	7415	S92L0F4500873	S92L0F4500873	1	ACU_34.42.NOV.TO3.069	D
SEPTA - Pennsylvania	L746	7416	7454	S92L7F4500952	S92L8F4501012	39	ACU_34.42.NOV.TO3.069	D
SEPTA - Pennsylvania	L749	7302	7354	S92Y7D4500409	S92L2E4500470	53	ACU_34.42.NOV.TO3.069	D

**WARNING**

Follow your internal safety procedures.

PROCEDURE**NOTE**

Required Tools: Allison DOC® for PC (H 40/50 EP), TCM Reflashing Tool, J-39700 Universal Breakout Box, J-47275 Breakout Harness 4th Gen TCM/VCM, J-46708 Multimeter.

**WARNING**

Only an authorized personnel having received proper training should perform diagnostics. Misuse may compromise the integrity of the electrical system and render the vehicle non-functional. Special care and authorization are required to perform these procedures.

- 1.1. Open the RF9 panel located at the rear interior of the vehicle.
- 1.2. Identify the ACU III unit installed (see Figure 1).
- 1.3. Locate the 9-pin ACU connector (see Figure 1).

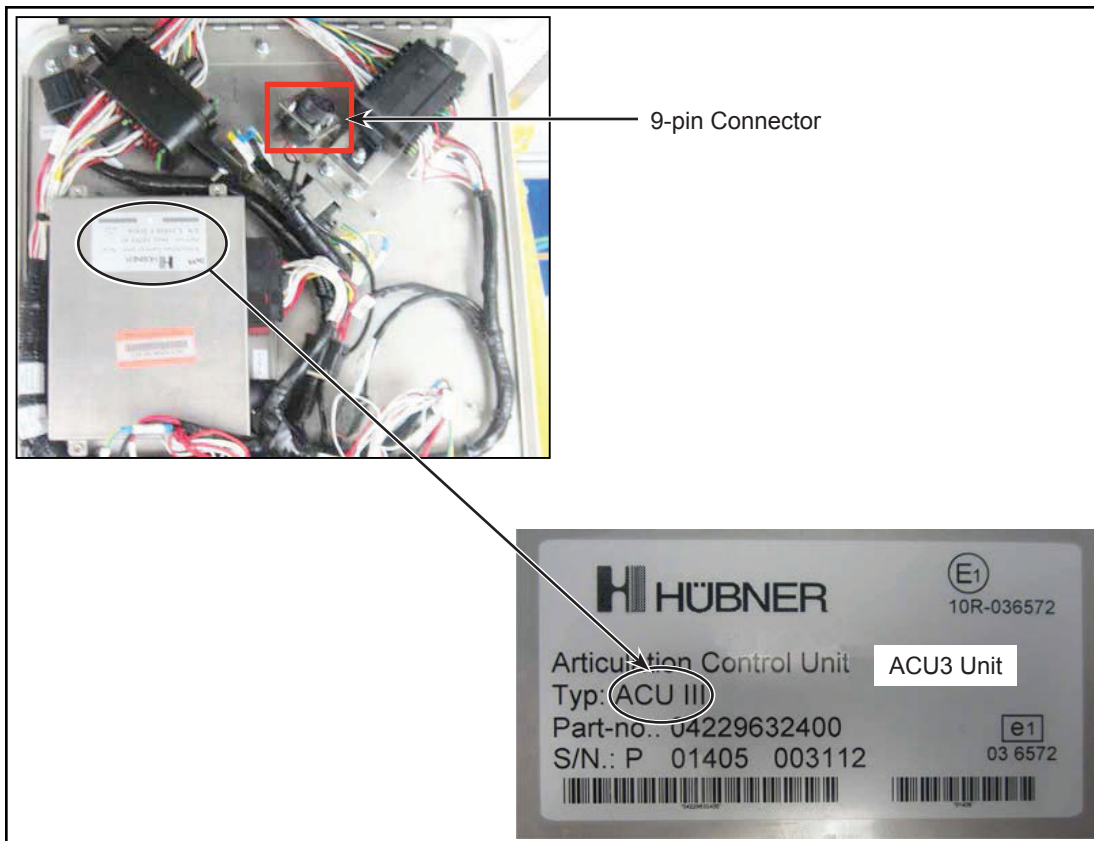


Figure 1 - Typical Location of ACU3 Unit and 9-pin Connector

**NOTE**

A connection cable kit is not supplied for this procedure.

- 1.4. Use the ACU3 cable kit (see Figure 2). To order the ACU cable connection kit, please contact prevost parts.



Figure 2 - Cable Connection Kit

- 1.5. Connect one end of the ACU3 cable kit to the 9-pin connector in the RF9 panel.
- 1.6. Connect the other end of the cable kit to the laptop.
- 1.7. Place the **MASTER CONTROL SWITCH** in the **RUN** position. The connected module's red light will illuminate to indicate that the power is active.
- 1.8. On the laptop, click the icon (see Figure 3) to access to the Hubner software program.

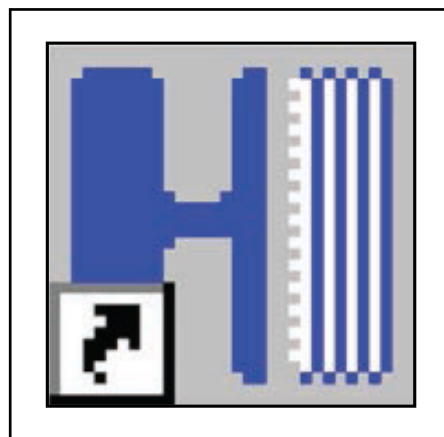


Figure 3 - Typical View of Hubner Software Icon

- 1.9. Click on the **CONNECT** button (see Figure 4), to establish communication with the ACU. The connection module's green light will illuminate to indicate that it is connected.

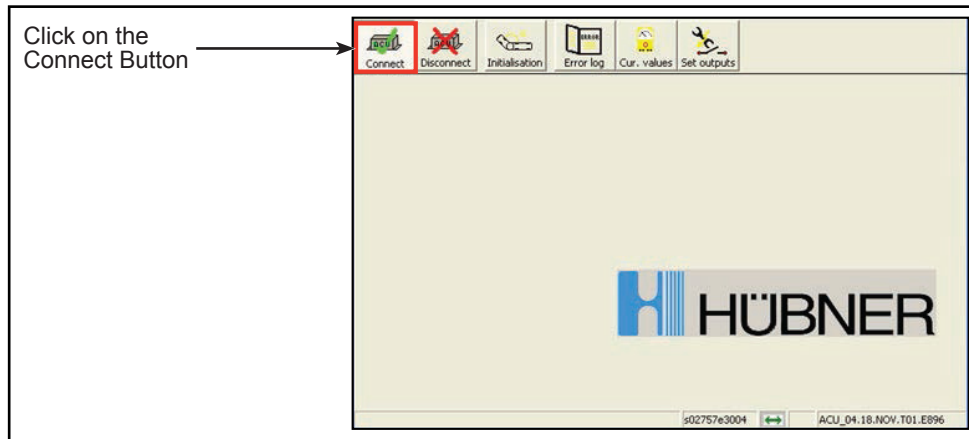


Figure 4 - Typical View of Hubner Software Interface

STEPS TO DOWNLOAD THE PROGRAM INTO THE ACU

- 1.10. Select **FLASH EPROM** (see Figure 5).
1.11. Select **WRITE FLASH EPROM** from the dropdown menu (see Figure 5).

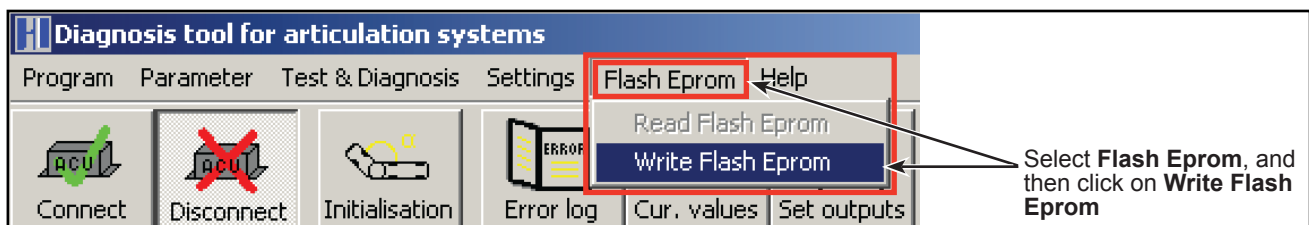


Figure 5 - Steps to Download

- 1.12. In the browser, select the new ACU corresponding program update. This is the program previously saved in the laptop (see Figure 6).

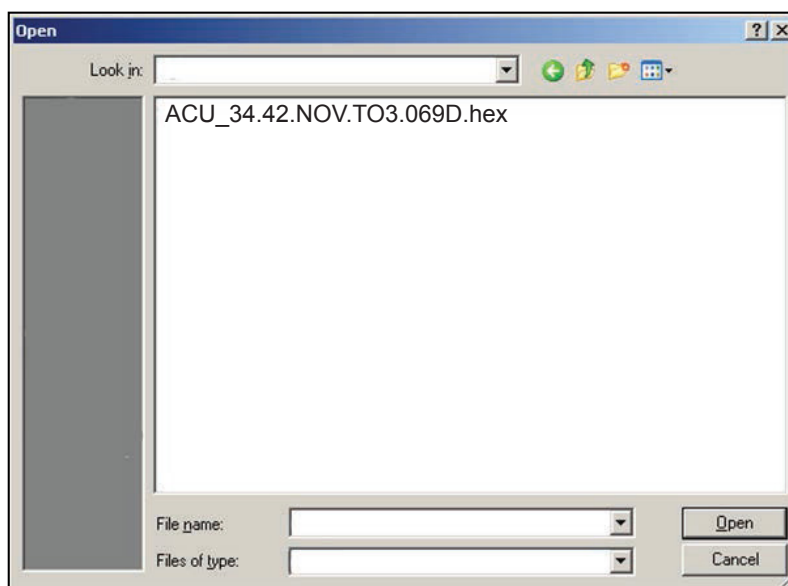


Figure 6 - Selection of File

- 1.13. Once the download has finished, three confirmation windows will appear.
- 1.14. Click on **YES**, each time, to confirm the process.
- 1.15. Verify all modules are programmed and communicating
- 1.16. When complete, press the **DISCONNECT** icon (see Figure 7).

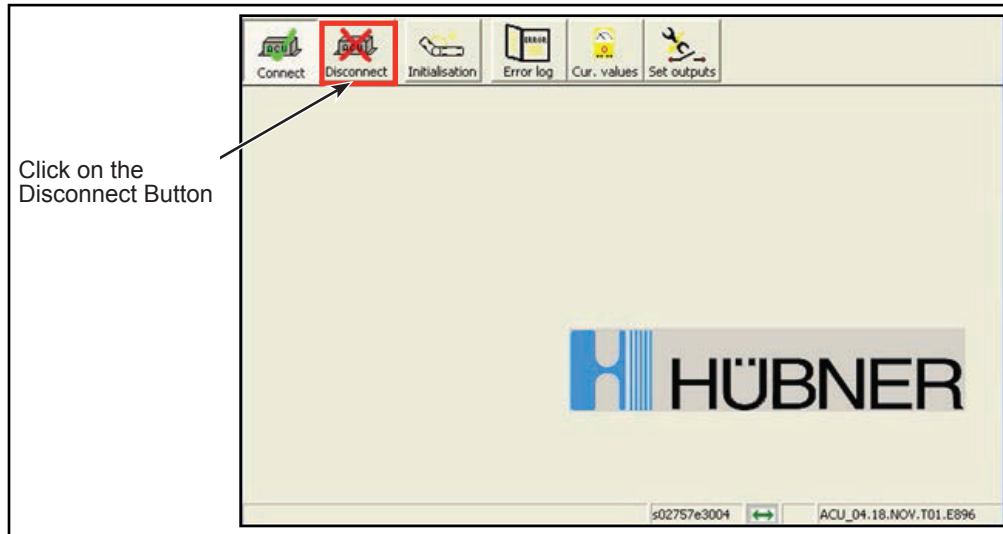


Figure 7 - Hubner Software Display

- 1.17. Disconnect the 9-pin connector from the RF9 panel plug.
- 1.18. Close the RF9 panel door.
- 1.19. Set the **MASTER CONTROL SWITCH** to the **STOP** position.
- 1.20. Start the vehicle and perform the running test.
- 1.21. The vehicle may be returned to service.❖