



Service Bulletin

PRELIMINARY INFORMATION

Subject: Diagnostic Tip - Front Shock Terminal Removal

Models: 2015-2016 Cadillac Escalade Models
2015-2016 Chevrolet Suburban, Silverado, Tahoe
2015-2016 GMC Sierra, Yukon Models
With Magnetic Ride Suspension Package (RPO Z95)

This PI was superseded to update Model Years and Recommendation/Instructions. Please discard PIT5287A.

The following diagnosis might be helpful if the vehicle exhibits the symptom(s) described in this PI.

Condition/Concern

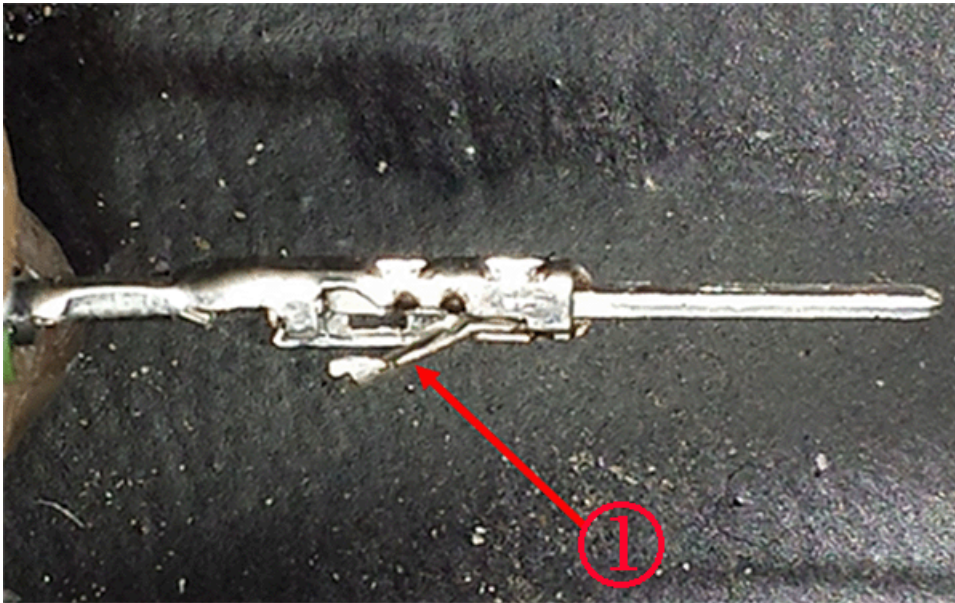
Certain repairs to the front suspension require the removal of the front shock electrical connector terminals. Because the terminals are positioned deep into the connector body, it may be difficult to remove the terminals.

Recommendation/Instructions

The use of terminal release tool J-38125-12A (Delphi # 12094429) with a small modification has been found to make removal of the terminal(s) much easier. Slightly bend the end of the J-38125-12A release tool, as shown in the photo below.



While looking down into the connector body at the terminals, there is a purple TPA that will align itself in the release position when the release tool is inserted in the release hole. Shown below is a shock terminal, that is already removed from the connector body, to show the metal locking tab (1) that will need to be pushed in with the terminal release tool before the terminal will pull out of the connector body.



Please follow this diagnostic or repair process thoroughly and complete each step. If the condition exhibited is resolved without completing every step, the remaining steps do not need to be performed.

GM bulletins are intended for use by professional technicians, NOT a "do-it-yourselfer". They are written to inform these technicians of conditions that may occur on some vehicles, or to provide information that could assist in the proper service of a vehicle. Properly trained technicians have the equipment, tools, safety instructions, and know-how to do a job properly and safely. If a condition is described, DO NOT assume that the bulletin applies to your vehicle, or that your vehicle will have that condition. See your GM dealer for information on whether your vehicle may benefit from the information.



WE SUPPORT VOLUNTARY TECHNICIAN CERTIFICATION