

Automatic Intermittent Wipers Not Working Properly?

AFFECTED VEHICLES

2016 Civic Touring

Are the automatic intermittent wipers not working properly or not at all? Before you dive in and start replacing parts, take a few minutes and check out these troubleshooting tips.

But first, a little lesson on this system. When you push the wiper lever down to AUTO, the windshield wipers sweep once and go into automatic mode. The wipers then work intermittently, at low speed, or at high speed, and stop according to the amount of rainfall detected by the windshield-mounted rainfall sensor.

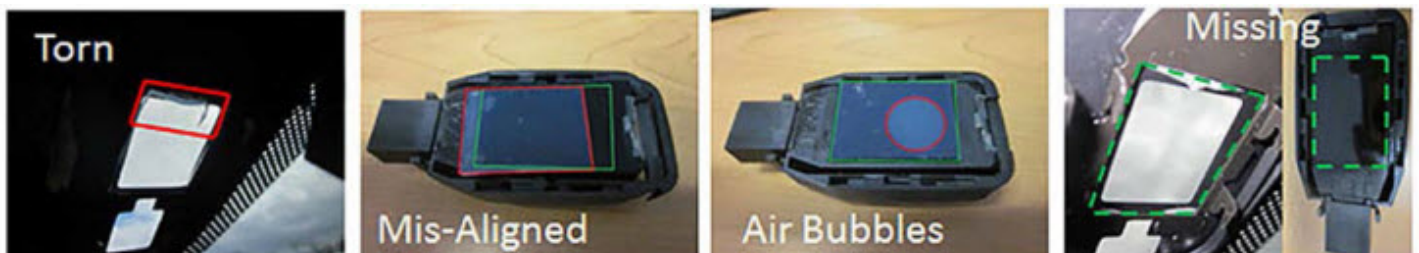
When in AUTO, you can also adjust the rainfall sensitivity with the intermittent time adjustment ring.



- **(-) Low Sensitivity:** Lower speed, fewer sweeps. In this setting, you'll need a steady amount of rainfall on the windshield before the system would react and trigger a wiper sweep.
- **(+) High Sensitivity:** Higher speed, more sweeps. In this setting, the wiper system is more sensitive and will react to the smallest bit of rainfall. For example, a single raindrop on the front windshield could trigger a wiper sweep.

Since the rainfall sensor is mounted on the windshield, it must be set flush with the glass; otherwise, the system **won't** respond properly. This sensor also has a silicon sheet that mounts between it and the windshield. Carefully inspect that sheet from outside the vehicle for any of these conditions:

- Tears
- Misalignment
- Air bubbles
- Missing sheet from either the sensor body or windshield



If you find any, replace the silicon sheet (P/N 38972-T0A-003).

Another possible reason for the wipers not be working properly is that the rainfall sensor isn't fully snapped in place where viewed from inside the vehicle. Make sure it is. Of course, if the silicon sheet is OK and the sensor is in place, then continue with normal troubleshooting.

Now, here's something else to keep in mind. If the rainfall sensor was previously replaced and the ignition was left in IG1 or higher, the system will go into failsafe mode. This will cause the wipers to default to intermittent operation and you won't be able to control their speed.

To fix this problem, make sure the ignition is turned to OFF, then pull fuses No. 18 BACKUP (10 A) and No. 19 AUDIO (15 A). Now, install those fuses and turn the ignition to ON. This will force the system to seek out the rainfall sensor and the wipers should then work properly.

Just one final note: If you ever need to replace the windshield, make sure you're using an OEM replacement part. And when you're installing the rainfall sensor, don't forget to replace the silicon sheet.

© 2016 American Honda Motor Co., Inc. – All Rights Reserved