



Service Bulletin

PRELIMINARY INFORMATION

Subject: Installation Tip - Door Striker Cover Installation During PDI

Models: 2015-2017 Cadillac Escalade Models
2015-2017 Chevrolet Tahoe LTZ, Suburban LTZ
2015-2017 GMC Yukon Denali Models

This PI was superseded to update Model Years. Please discard PIT5259B.

The following diagnosis might be helpful if the vehicle exhibits the symptom(s) described in this PI.

Condition/Concern

Installation of the front and rear door striker covers is part of the PDI process for up-level full-size utilities.

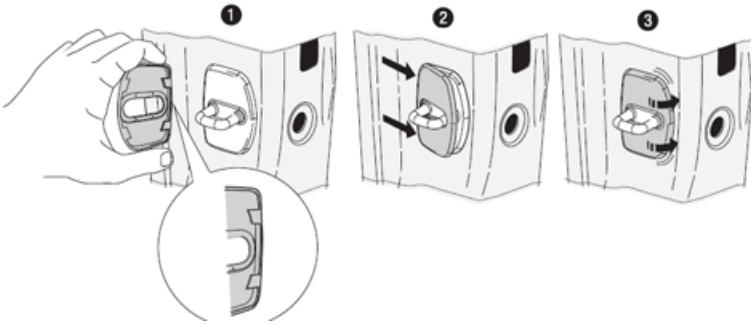
Note: These covers will be shipped with the vehicle from the assembly plant.

There have been reports of these covers being installed incorrectly / backwards, as shown below.



Recommendation/Instructions

Make sure the rounded side of the cover is positioned towards the outboard side of the vehicle, as reflected below:



Warranty Information

The labor time for installing the door striker covers is included in the PDI time.

Please follow this diagnostic or repair process thoroughly and complete each step. If the condition exhibited is resolved without completing every step, the remaining steps do not need to be performed.

GM bulletins are intended for use by professional technicians, NOT a "do-it-yourselfer". They are written to inform these technicians of conditions that may occur on some vehicles, or to provide information that could assist in the proper service of a vehicle. Properly trained technicians have the equipment, tools, safety instructions, and know-how to do a job properly and safely. If a condition is described, DO NOT assume that the bulletin applies to your vehicle, or that your vehicle will have that condition. See your GM dealer for information on whether your vehicle may benefit from the information.



WE SUPPORT VOLUNTARY TECHNICIAN CERTIFICATION