

1 09 02-16



## Service Information Bulletin

SUBJECT	DATE
Symptom Diagnostics - Belt Coming Off, Shredding or Misalignment	September 2016

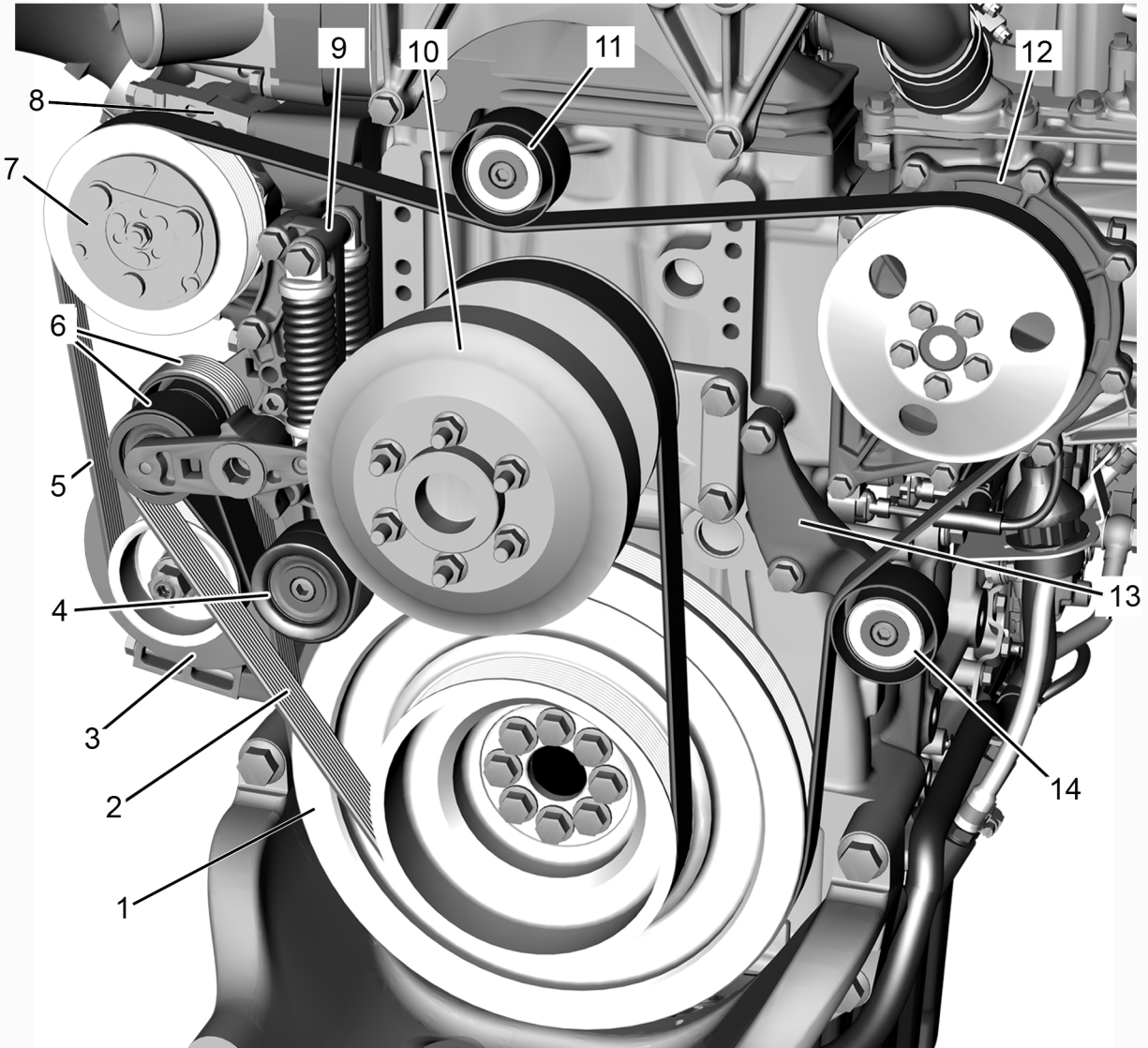
### Additions, Revisions, or Updates

Publication Number / Title	Platform	Section Title	Change
DDC-SVC-MAN-0191	GHG17 DD Platform HD	Symptom Diagnostics - Belt Coming Off, Shredding or Misalignment	New GHG17 HD diagnostic procedures.
DDC-SVC-MAN-0193	GHG17 DD Platform MD	Symptom Diagnostics - Belt Coming Off, Shredding or Misalignment	New GHG17 MD diagnostic procedures.
DDC-SVC-MAN-0084	EPA07/10/ GHG14 DD Platform	Symptom Diagnostics - Belt Coming Off, Shredding or Misalignment	New EPA07/10/GHG14 HD diagnostic procedures.



13400 Outer Drive, West, Detroit, Michigan 48239-4001  
 Telephone: 313-592-5000  
[www.demanddetroit.com](http://www.demanddetroit.com)

## 2 Belt Coming Off, Shredding or Misalignment



d130000

Check as follows:

1. Shut off the engine, apply the parking brake, chock the wheels, and perform any other applicable safety steps.
2. Verify the complaint.

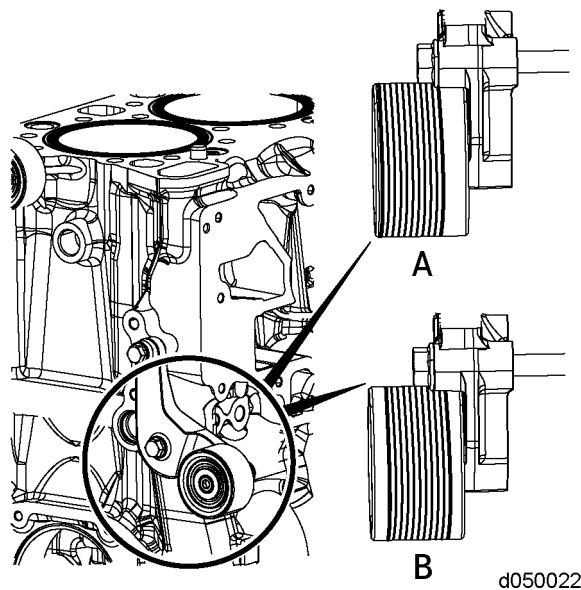


### **WARNING: PERSONAL INJURY**

To avoid injury to hands and fingers from the spring-loaded auto belt tensioner violently snapping back, do not cut the belt to remove it.

3. Check the maintenance records to be sure the belts are not overdue for a maintenance interval. Refer to section "EPA10/GHG14/GHG17 DD Series Preventive Maintenance Tables". Do the belts require replacement?
  - a. Yes; replace both belts. Refer to section "Removal of the Poly-V-Belts". Verify repair.
  - b. No; Go to step 4.

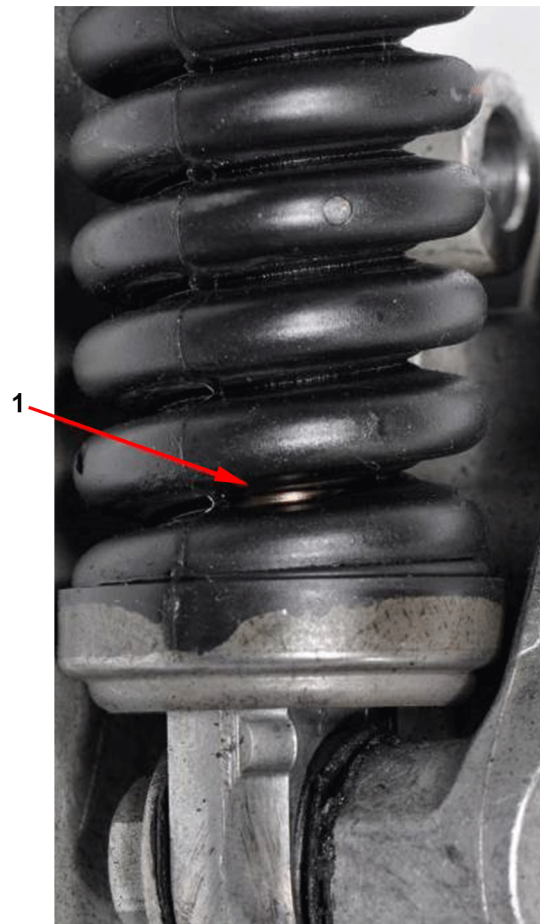
4. Visually inspect the belts and pulleys for signs of misalignment. The wear pattern should never reach the outer edge of the idler pulley surface (A). Do the belts and pulleys show signs of misalignment?



- a. Yes; repair as necessary. Verify repair.
  - b. No; Go to step 5.
5. Remove the belts.
6. Check the belt for fluid contamination. Check for leaks from engine or chassis components. Are there any fluids leaking onto the belt?
- a. Yes; repair as necessary. Verify repair.
  - b. No; Go to step 7.
7. Visually inspect the belt tensioner for damage. Make sure the belt tensioner is applying constant adequate tension on the belt, and make sure that it does not stick or bind. Is damage present?
- a. Yes; replace the belt tensioner. Refer to section "Removal of the Belt Tensioner". Verify repair.
  - b. No; Go to step 8.
8. Is the engine equipped with a strut type belt tensioner?
- a. Yes; Go to step 9.
  - b. No; Go to step 10.

**NOTE:** Oil leaks from the belt tensioner strut can normally be seen near the bottom of the strut.

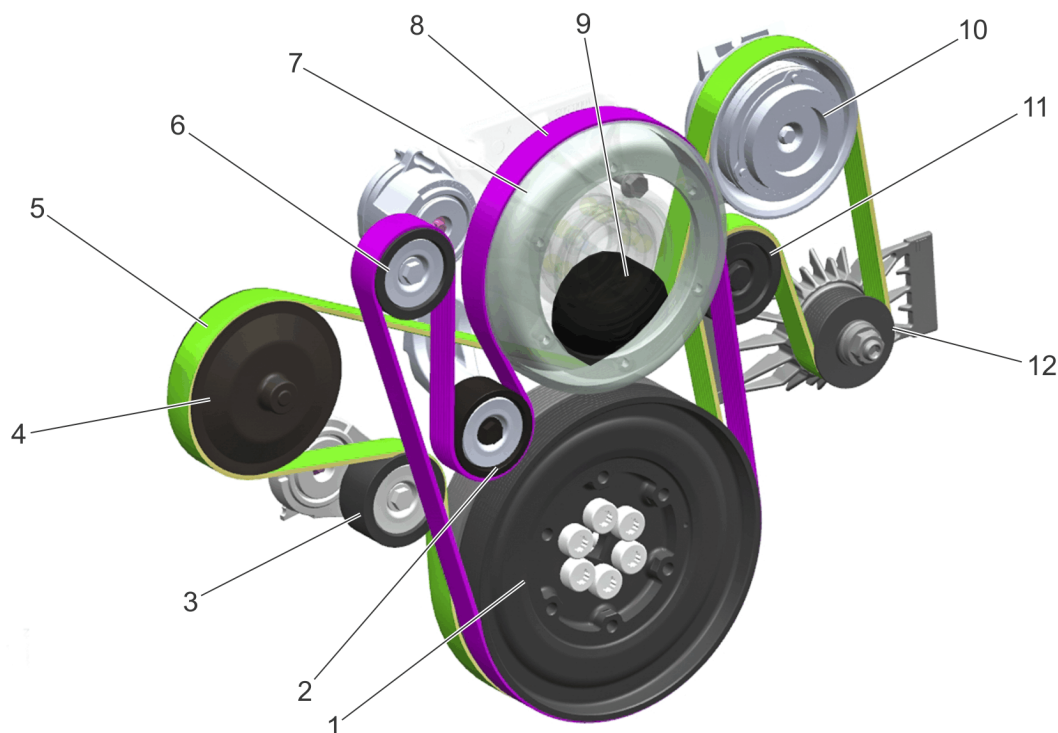
9. Inspect the belt tensioner strut. Check for a broken strut mount or oil leaking at the strut (1). Is the strut mount broken or oil leaking at the strut?



d050046

- a. Yes; replace the belt tensioner. Refer to section "Removal of the Belt Tensioner". Verify repair.
  - b. No; Go to step 10.
10. Rotate the idler and accessory pulleys by hand while checking for grinding, sticking, and excessive lateral or radial play. Is damage present?
- a. Yes; repair as necessary. Verify repair.
  - b. No; replace both belts. Refer to section "Removal of the Poly-V-Belts". Verify repair.

### 3 Belt Coming Off, Shredding or Misalignment



d010228

Check as follows:

1. Verify the complaint.



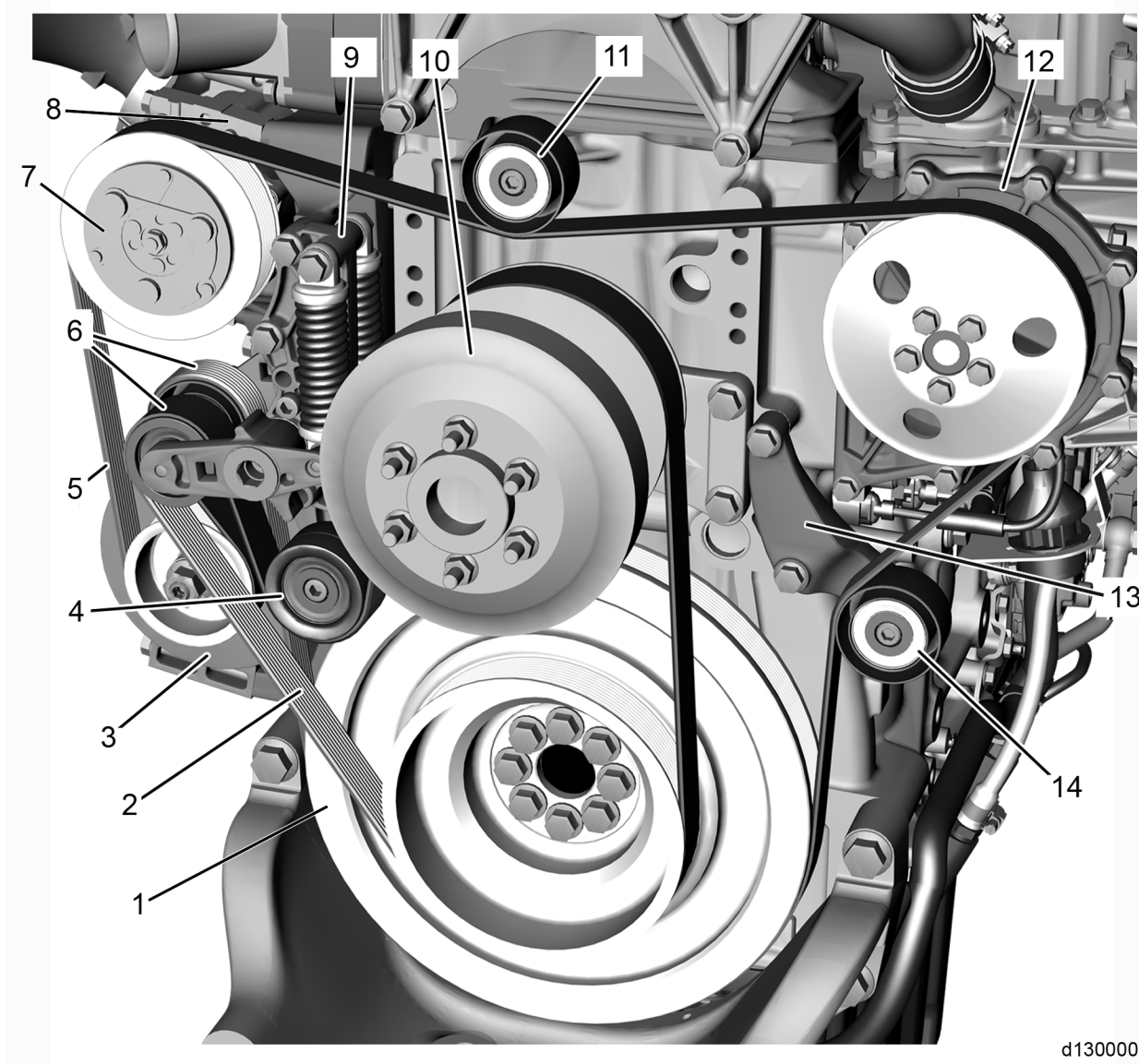
**WARNING: PERSONAL INJURY**

To avoid injury to hands and fingers from the spring-loaded auto belt tensioner violently snapping back, do not cut the belt to remove it.

2. Check the maintenance records to be sure the belts are not overdue for a maintenance interval. Refer to "DD Series Preventative Maintenance Tables". Do the belts require replacement?
  - a. Yes; replace both belts. Refer to section "Removal of the Poly-V-Belts". Verify repair.
  - b. No; Go to step 3.
3. Visually inspect the belts and pulleys for signs of misalignment. The wear pattern should never reach the outer edge of the idler pulley surface. Do the belts and pulleys show signs of misalignment?
  - a. Yes; repair as necessary. Verify repair.
  - b. No; Go to step 4.
4. Remove the belts.
5. Check the belt for fluid contamination. Check for leaks from engine or chassis components. Are there any fluids leaking onto the belt?
  - a. Yes; repair as necessary. Verify repair.
  - b. No; Go to step 6.
6. Visually inspect the belt tensioner for damage. Make sure the belt tensioner is applying constant adequate tension on the belt, and make sure that it does not stick or bind. Is damage present?
  - a. Yes; replace the belt tensioner. Refer to section "Removal of the Belt Tensioner". Verify repair.
  - b. No; Go to step 7.

7. Rotate the idler and accessory pulleys by hand while checking for grinding, sticking, and excessive lateral or radial play. Is damage present?
  - a. Yes; repair as necessary. Verify repair.
  - b. No; replace both belts. Refer to section "Removal of the Poly-V-Belts". Verify repair.

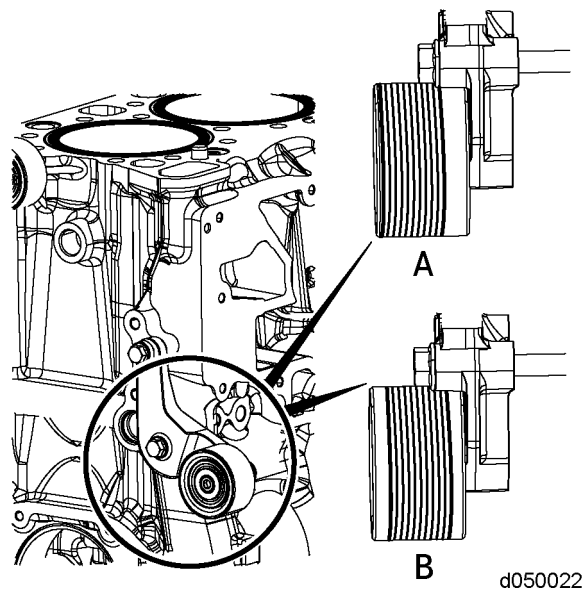
## 4 Belt Coming Off, Shredding or Misalignment



d130000

Check as follows:

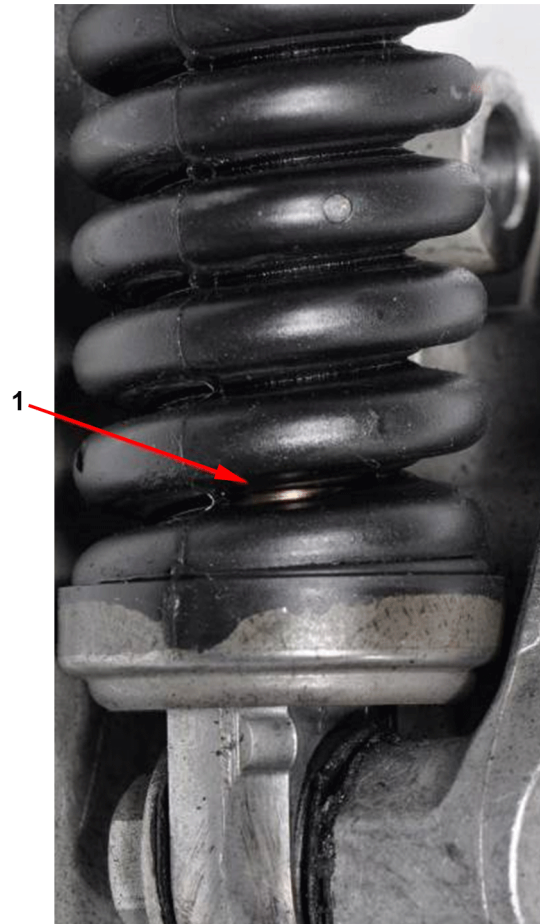
1. Verify the complaint.
2. Check the maintenance records to be sure the belts are not overdue for a maintenance interval. Refer to section "EPA10/GHG14/GHG17 DD Series Preventive Maintenance Tables". Do the belts require replacement?
  - a. Yes; replace both belts. Refer to section "Removal of the Poly-V-Belts". Verify repair.
  - b. No; Go to step 3.
3. Visually inspect the belts and pulleys for signs of misalignment. The wear pattern should never reach the outer edge of the idler pulley surface. Do the belts and pulleys show signs of misalignment?



- a. Yes; repair as necessary. Verify repair.
  - b. No; Go to step 4.
4. Remove the belts.
5. Check the belt for fluid contamination. Check for leaks from engine or chassis components. Are there any fluids leaking onto the belt?
- a. Yes; repair as necessary. Verify repair.
  - b. No; Go to step 6.
6. Visually inspect the belt tensioner for damage. Make sure the belt tensioner is applying constant adequate tension on the belt, and make sure that it does not stick or bind. Is damage present?
- a. Yes; replace the belt tensioner. Refer to section "Removal of the Belt Tensioner". Verify repair.
  - b. No; Go to step 7.

**NOTE:** Oil leaks from the belt tensioner strut can normally be seen near the bottom of the strut.

7. Inspect the belt tensioner strut. Check for a broken strut mount or oil leaking at the strut (1). Is the strut mount broken or oil leaking at the strut?



d050046

- a. Yes; replace the belt tensioner. Refer to section "Removal of the Belt Tensioner". Verify repair.
  - b. No; Go to step 8.
8. Rotate the idler and accessory pulleys by hand while checking for grinding, sticking, and excessive lateral or radial play. Is damage present?
- a. Yes; repair as necessary. Verify repair.
  - b. No; replace both belts. Refer to section "Removal of the Poly-V-Belts". Verify repair.