 HYUNDAI NEW THINKING. NEW POSSIBILITIES. Technical Service Bulletin	GROUP CAMPAIGN	NUMBER 16-01-015
	DATE APRIL 2016	MODEL(S) SANTA FE (NC)
SUBJECT: TAILGATE LIFTER BRACKET REPLACEMENT (SERVICE CAMPAIGN TZ9)		

★ IMPORTANT

***** Dealer Stock and Retail Vehicles *****

Dealers must perform this Service Campaign on all affected vehicles prior to customer retail delivery and whenever an affected vehicle is in the shop for any maintenance or repair.

When a vehicle arrives at the Service Department, access Hyundai Motor America's "Warranty Vehicle Information" screen via WEBDCS to identify open Campaigns.

Description: On certain 2016MY Santa Fe (NC) the tailgate lifter brackets may show signs of surface corrosion.

This bulletin describes the procedure to replace the tailgate lifter bracket on both sides with updated service parts.




Applicable Vehicles: Certain 2016 Santa Fe (NC).

PARTS INFORMATION:

Circulate To: General Manager, Service Manager, Parts Manager, Warranty Manager, Service Advisors, Technicians, Body Shop Manager, Fleet Repair

SUBJECT: TAILGATE LIFTER BRACKET REPLACEMENT (SERVICE CAMPAIGN TZ9)

PART IMAGE	PART NUMBER	DESCRIPTION
	81771B8100QQH	TAIL GATE LIFTER BRACKET (INCLUDES FOUR BRACKETS)

CAUTION

Wear protective goggles and gloves for protection when performing the procedures in this bulletin.

WARRANTY INFORMATION:

OP CODE	OPERATION	OP TIME
50C078R1	TAIL GATE LIFTER BRACKET REPLACEMENT (4EA)	0.3 M/H

NOTE: Submit Claim on Campaign Claim Entry Screen

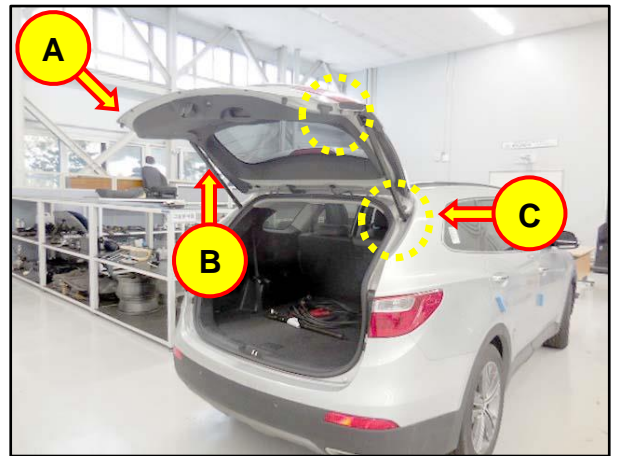
SERVICE PROCEDURE:

The procedures below are described for the right side. Procedure for left side is the same as the right side.

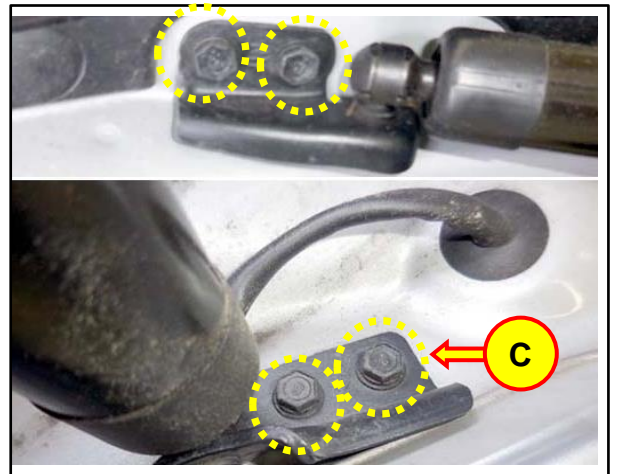
1. Open the tailgate (A).

CAUTION

Take necessary precaution when removing the tailgate lifters (B). Use the help of another person to hold the tailgate during the removal of lifters. Unsupported tailgate can drop suddenly causing severe injury.



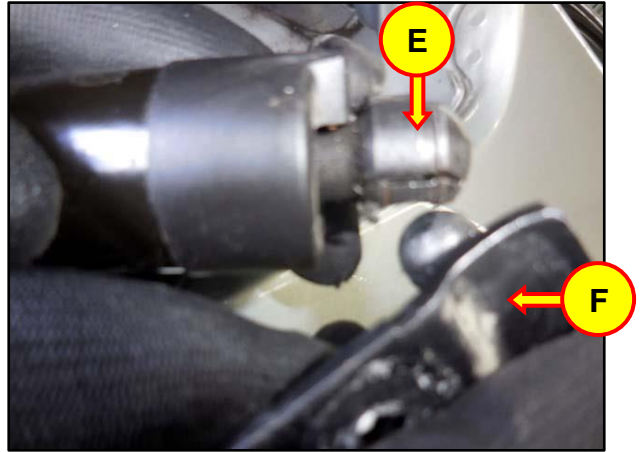
2. Remove the tailgate lifter mounting bolts (C).



3. Using a Phillips head screwdriver, slightly lift up the socket clips (D) of both ends on the tailgate lifter.



4. Remove the tailgate lifter (E) from the tailgate lifter bracket (F) on both sides (Body side and tailgate side).



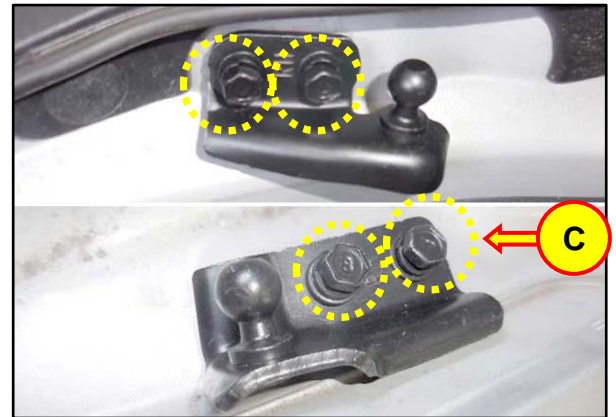
- 4a. Install the new tailgate lifter bracket.

NOTE

First temporarily tighten the bolts with fingers. Afterward, tighten the bolts completely with specified torque.

Tightening torque:

6.8 ~ 10.7 Nm (0.7 ~ 1.1 kgf.m, 5.0 ~ 7.9 lb-ft)



5. Install the tailgate lifter back to the new tailgate bracket.



6. Check if the wire grommet (G) is securely installed. Reinstall the grommet (G) if necessary.



7. Repeat the above procedure for the left side.

Ensure proper operation of the tailgate once the service procedure is complete.