

Field campaign

Topic	Bentayga Electronic Parking Brake (ASW 09.02) (SC16/26)
Market area	Bentley: worldwide (2WBE),Hongkong-Macau (5HK)
Brand	Bentley
Transaction No.	2045356/1
Campaign number	EA64
Note	
Type	Service Campaign
US code	

Vehicle data

Bentayga

Sales types

Type	MY	Brand	Designation	Engine code	Gearbox code	Final drive code
4V1*	2016	E		*	*	*
4V1*	2017	E		*	*	*
4V1*	2018	E		*	*	*

Chassis numbers

Manufacturer	Filler	Type	Filler	MY	Factory	From	To	Prod from	Prod to
SJA	***	**	*	*	C	000001	014709		

Documents

Document name
master.xml

Notes

▪ Repair instructions

Technical background

A software timing conflict when the ignition is switched on, may result in a Diagnostic Trouble Code (DTC) being stored and a warning message displayed on the Drivers Instrument Panel when switching ignition on – 'Parking Brake: fault Contact your Bentley dealer'. DTC U040100 – Invalid data from ECM/PCM

Remedy

Software update to Engine controllers and transmission controller

Customer notification

Customers do not need to be informed directly of this campaign. Please ensure that all affected vehicles are checked and repaired during the next service visit. You should also inform your new and used car sales departments so that the vehicles affected can be checked and, if necessary, repaired immediately (and not just before sale)

Warranty accounting instructions

Warranty Type 790 or 710
Labour Operation Code 01 29 00 04
Damage Service Number EA64
Damage Code 00 66
Time 40 TU

Genuine parts

.

Parts supply

.

Parts despatch control

.

Repair instructions

▪ Notes

Technical background

A software timing conflict when the ignition is switched on, may result in a Diagnostic Trouble Code (DTC) being stored and a warning message displayed on the Drivers Instrument Panel when switching ignition on – 'Parking Brake: fault Contact your Bentley dealer'. DTC U040100 – Invalid data from ECM/PCM

Check

If the vehicle is not already listed as repaired in the "Repair history" (in Elsa Pro), check for the presence of a blue campaign completion mark on the top of the relay box adjacent to the right hand bonnet hinge (see Figure 7) should neither be evident carry out the required work in accordance with these instructions

Genuine parts

.

Work

1. Ensure a suitable battery charger is still correctly connected to the vehicle electrical system for the duration of this procedure



Figure 1

2. Ensure the ignition key is located in the remote control key reader and switch on the ignition (see Figure 1)
3. Connect the Bentley approved diagnostic tool to the vehicle On Board Diagnostic (OBD) socket. **Note:** Hardwire connections should be used between the diagnostic tool and the OBD socket and when connecting broadband to the diagnostic tool
4. From the diagnostic tool main desktop select Off board Diagnostic Information System
5. Select—Start diagnosis
6. Select—Model/ Engine
7. Select *guided fault finding* to check and clear the vehicle of any fault codes. NOTE: At this stage when requested to *Make a Target/Actual comparison* do not perform this action select NO

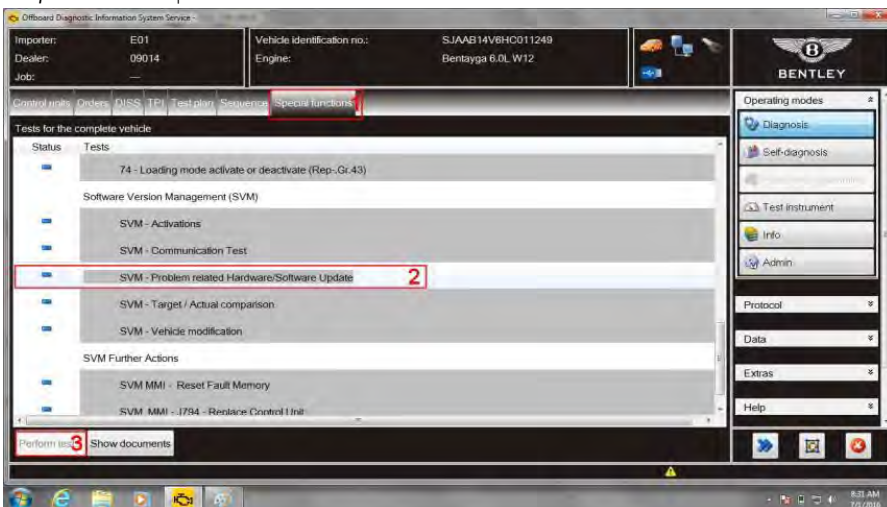


Figure 2

8. Select *Special functions* (1), Select *SVM – Problem related Hardware/Software Update* (2), Select *Perform* test (3) (see Figure 2)

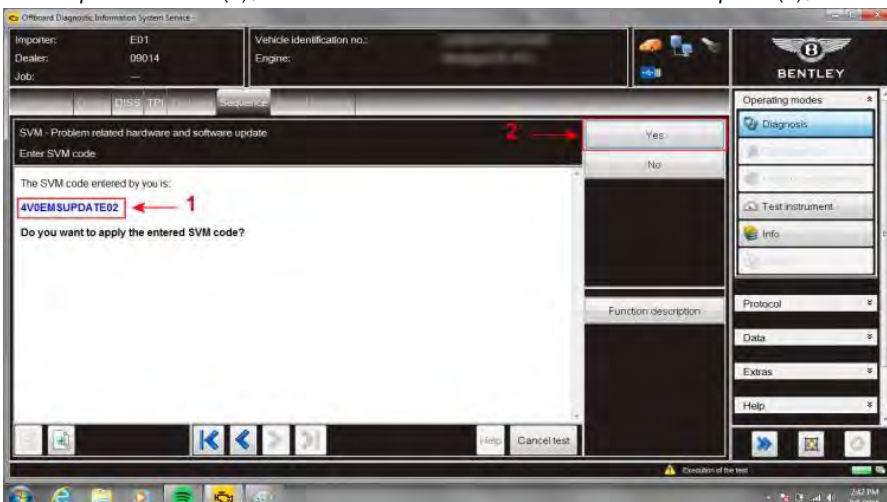


Figure 3

9. At SVM screen enter (1) the specific SVM code 4V0EMSUPDATE02 and then **Yes** (2) (see Figure 3)
10. Check you have entered the correct SVM code and select Yes
11. If prompted enter your global user ID and password
12. Follow the on screen prompts to continue through the procedure, identification data will be transferred

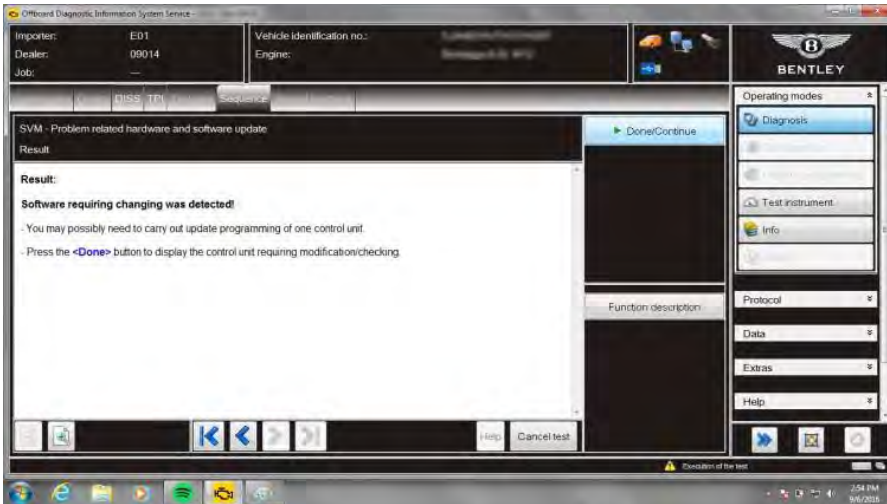


Figure 4

13. Once software that requires changing is detected select Done/Continue (see Figure 4) Note: each of the 3 control units will be offered for software update individually by the program. Follow prompts the online connection will deliver the required software to the tester

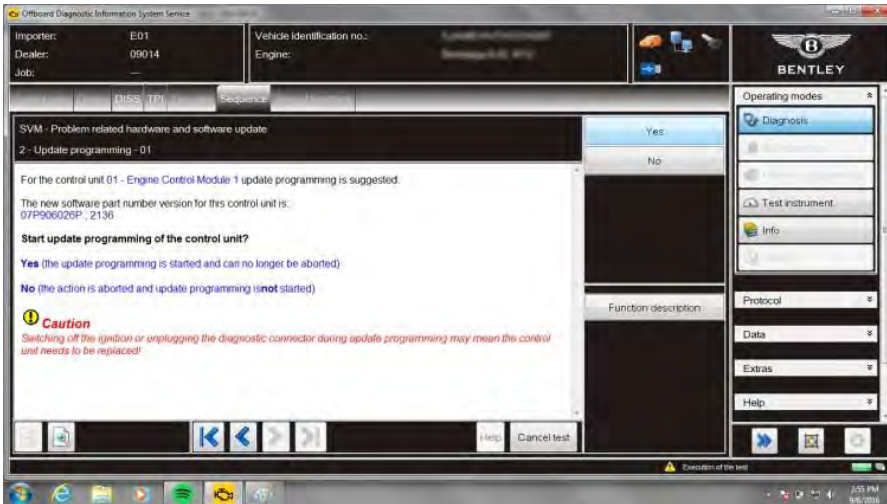


Figure 5

14. Select **Yes** at **Update programming 01** to update 01 – Engine control module (see Figure 5)
15. During update a progress bar will be displayed
16. Once Done/Continue is selected at **software requires changing detected** screen then the next module requiring software will be presented – **Engine control unit 2**
17. At necessary update programming screen select **Yes** to update **11 – Engine control unit 2**
18. Select **Yes** at **2 – Update programming** screen select **Yes** to update – Engine control module 2
19. During update a progress bar will be displayed
20. Once Done/Continue is selected at **software requires changing detected** screen the next module requiring software change will be presented – Automatic gearbox control unit
21. At necessary update programming screen select Yes to update 02 – Automatic gearbox control unit – J217
22. Select Yes at 2 – Update programming – 02 to update – Automatic gearbox control unit
23. During update a progress bar will be displayed
24. Once the transmission control module is updated an automatic SVM will take place

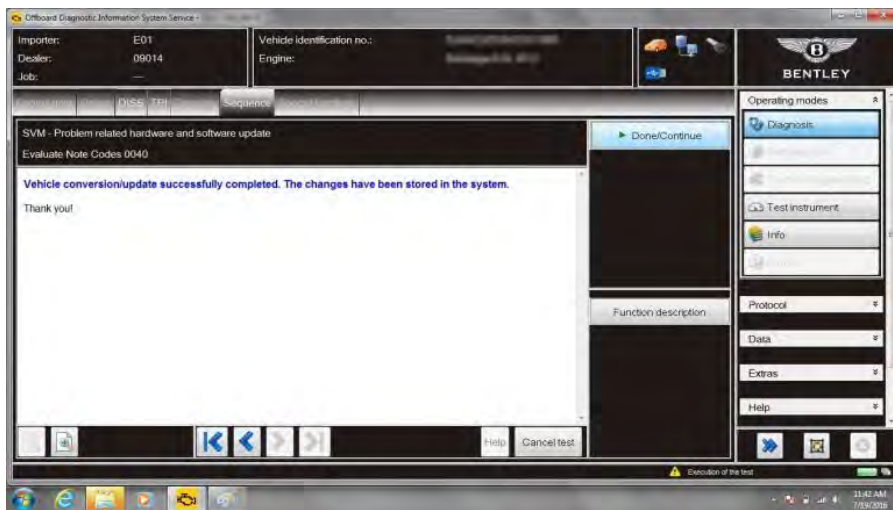


Figure 6

25. Select Done/Continue at successfully complete to finalise the update (see Figure 6)
26. Select *Guided fault finding* to check and clear the vehicle of any fault codes generated as a result of performing this campaign. Note: When requested to *Make a Target/Actual comparison* this action should be performed, select **YES**
27. On completion apply a blue campaign completion mark to the top of the relay box adjacent to the right hand bonnet hinge (see Figure 7)

Identification



Figure 7