

Technical product information

Topic	Lower rearward levers ROW
Market area	Hongkong-Macau (5HK),Russische Föderation (5RU),Australia E04 Bentley rest Asia and Australia (6E04),China 796 VW Import Comp. Ltd (Vico), Beijing (6796),Germany E02 Bentley rest Europe (6E02),Japan E03 Bentley Japan (6E03),Russian Federation 935 Volkswagen Group RUS (6935),United Kingdom E01 Bentley UK (6E01),United States E05 Bentley USA and rest America (6E05)
Brand	Bentley
Transaction No.	2043080/1
Level	EH
Status	Approval
Release date	

New customer code

Object of complaint	Complaint type	Position
Running gear -> Steering, power-assisted steering -> Steer	Noise, vibration -> vibrate	
Running gear -> Steering system	functionality	
Running gear -> Steering system	Noise, vibration	
Running gear -> Wheels, tyres, tyre pressure monitoring -> Tyres	component / consumables -> incorrectly built	
Running gear -> Steering, power-assisted steering -> Steer	dimensional accuracy -> incorrect fit	
Running gear -> Wheels, tyres, tyre pressure monitoring -> Tyres -> Tyre tread	visual appeal / surface -> bump	> not specified <

New workshop code

Object of complaint	Complaint type	Position
Running gear -> Wheels, tyres, tyre pressure monitoring -> Tyres	component / consumables -> unbalanced	rear right
Running gear -> Wheels, tyres, tyre pressure monitoring -> Tyres	component / consumables -> unbalanced	front right
Running gear -> Wheels, tyres, tyre pressure monitoring -> Tyres	component / consumables -> unbalanced	front left
Running gear -> Wheels, tyres, tyre pressure monitoring -> Tyres	component / consumables -> unbalanced	rear left
Running gear -> Wheels, tyres, tyre pressure monitoring -> Tyres	component / consumables -> incorrectly built	> not specified <

Vehicle data

AllNewContinentalandFlyingSpur

Sales types

Type	MY	Brand	Designation	Engine code	Gearbox code	Final drive code
39*	2012	E		*	*	*
39*	2013	E		*	*	*
39*	2014	E		*	*	*
39*	2015	E		*	*	*
39*	2016	E		*	*	*
4W2*	2014	E		*	*	*
4W2*	2015	E		*	*	*
4W2*	2016	E		*	*	*

Chassis numbers

Manufacturer	Filler	Type	Filler	MY	Factory	From	To	Prod from	Prodto
SCB	***	**	*	*	*	000001	097155		
SCB	***	**	*	*	*	040000	057117		

Documents

Document name
master.xml

Customer statement / workshop findings

This TPI must be carried out in conjunction with the New Continental GT and New Continental GTC steering shimmy/vibration TPI with the Transaction number of 2045080/1 and the Flying Spur shimmy vibration TPI with the transaction number of 2045082/1

Before commencing a valid customer complaint must have been received relating to steering shimmy/vibration.

Technical background

New specification front rearward lower levers are available

The differences are as shown in Figures 1 and 2

Figure 1, shows a lower lever with the original type bush fitted

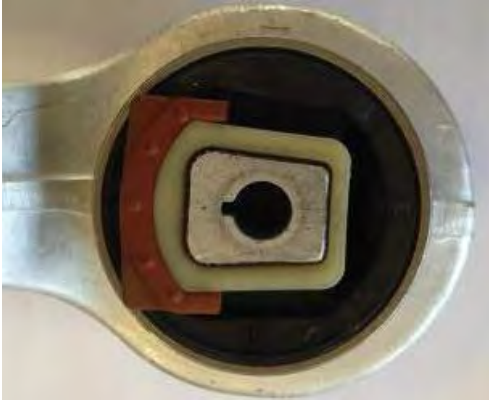


Figure 1

Figure 2, shows a lower lever with the latest specification bush fitted



Figure 2

- Figure 3, shows the difference from the opposing side
- Point A is the original part (non tapered)
- Point B is the new specification (with tapered ends)

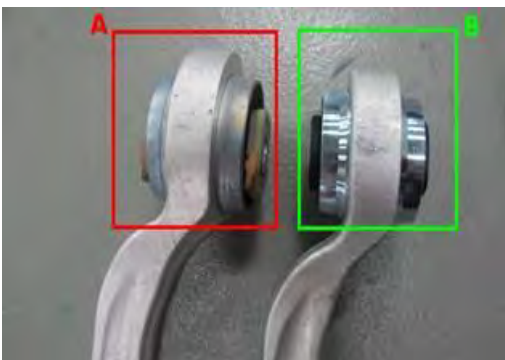


Figure 3

Production change

-

Measure

CAUTION: Within this procedure all fixings are single use items which must be replaced and not reused. Ensure that new replacements are available

prior to starting this procedure

1. Remove both of the original lower rearward levers – Refer to Workshop manual Rep.Gr 40

TIP: Note the orientation of the levers prior to removal

The levers must be scrapped locally and not reused

2. Fit the new specification levers ensuring the orientation is correct – Refer to Workshop manual Rep.Gr 40

- Ensure all new fixings are always fitted

- Referring to the workshop manual torque tighten the outer ball joint nuts and the inner fixings – Refer to Workshop manual Rep.Gr 40

- When torque tightening the ball joint fixing use a ½ drive 21mm Crow ring adaptor (Figure 4 shows an example)



Figure 4

There is a requirement that any suspension component with bonded rubber inserts MUST be at standard ride height before tightening the fixings.

Refer to workshop manual Rep.Gr 40 - Raising the Wheel Bearing Housing - To Tighten Bolts

Failure to comply will result in the lever bushes undertaking excessive torsional twist, resulting in rupture and complete failure of the rubber

3. Check and adjust the front and rear vehicle geometry as instructed in TPI's 2045080/1 and 2045082/1

Warranty accounting instructions

Time to replace both Lower levers

Warranty Type 910 or 110

Labour Operation code 40 16 42 00 (for Continental GT and Flying Spur)

40 16 19 99 (for Continental GTC)

Damage Service Number 40 16

Damage Code 00 10

Location 000

Time 60 time Units

IMPORTANT:

The time quoted is to replace the left and right hand lower rear most levers, as this process should be done in conjunction with the applicable TPI, you must check and adjust the front and rear vehicle geometry as instructed using the allocated Labour operation code

Parts information

Description	Part Number	Quantity
Front wishbone link (U3) - Lower lever (Left)	3W0 407 693A	1
Front wishbone link (U3) - Lower lever (Right)	3W0 407 694A	1
Lower lever ball joint fixing	Refer to ETKA Part catalogue	2
Lower lever bolt	Refer to ETKA Part catalogue	2
Lower lever nut	Refer to ETKA Part catalogue	2