



Service Bulletin

File in Section: -

Bulletin No.: 16-NA-179

Date: June, 2016


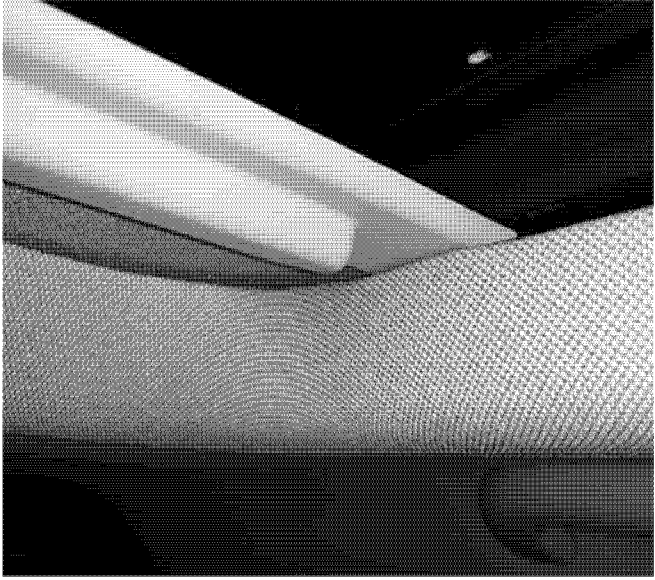
TECHNICAL

Subject: Wear Condition or Fraying of Headliner at Sunroof Module Rear Opening

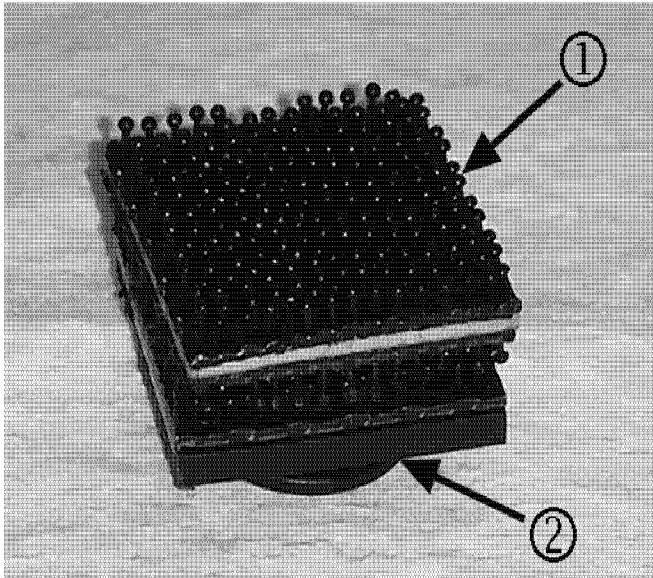
Brand:	Model:	Model Year:		VIN:		Engine:	Transmission:
		from	to	from	to		
Chevrolet	Impala (VIN 1)	2014	2017			All	All

Involved Region or Country	NORTH AMERICA, BAHRAIN, ISRAEL, IRAQ, JORDAN, KOREA, REPUBLIC OF KUWAIT, OMAN, PALESTINIAN TERRITORY, OCCUPIED, QATAR, SAUDI ARABIA, YEMEN, UNITED ARAB EMIRATES.
Additional Options (RPO)	Equipped with Sunroof (RPO C3U)
Condition	

4532664

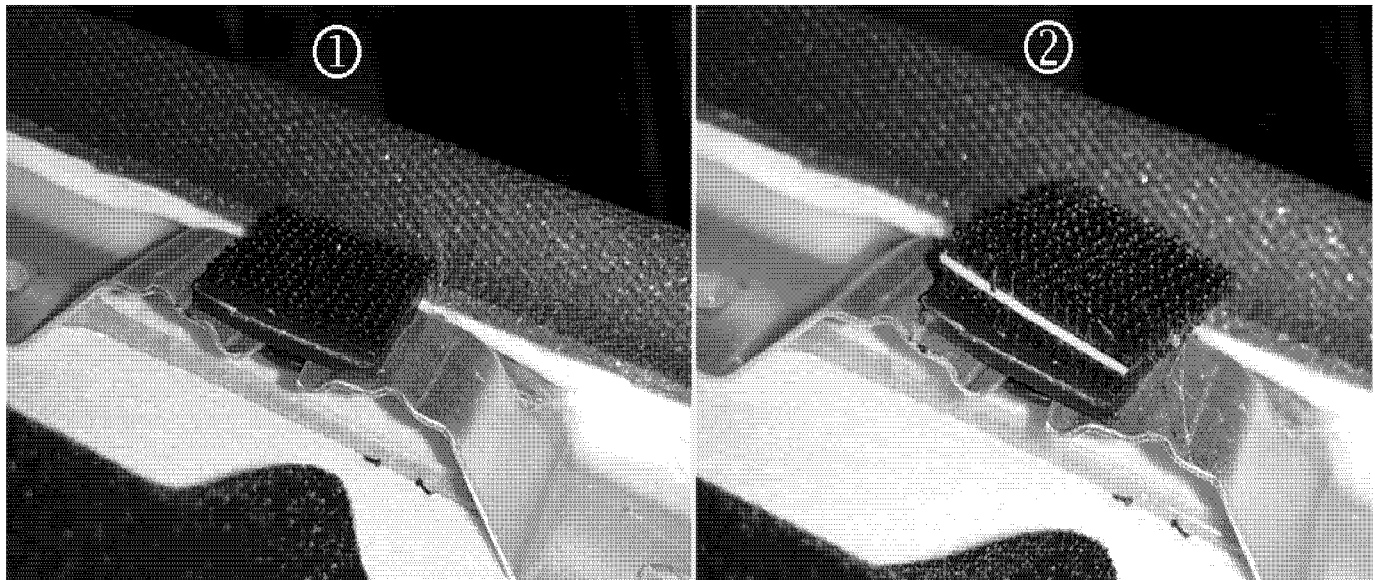
	 <p data-bbox="1419 749 1484 768">4532667</p> <p data-bbox="539 778 1461 853">Some customers may comment on seeing a worn area or fraying of the headliner at the sunroof module rear opening. Examples of the wear condition are shown in the graphics above.</p>
<p data-bbox="131 1221 204 1247">Cause</p>	<p data-bbox="539 868 1461 921">The cause of the condition may be due to a contact condition between the headliner and the sunroof module when cycling.</p>  <p data-bbox="1419 1523 1484 1542">4528614</p> <p data-bbox="539 1551 1435 1604">Lack of clearance between the sunroof sunshade and the rear headliner opening may result in a touch condition that leads to edge fray of the headliner over repeated use.</p>

Correction



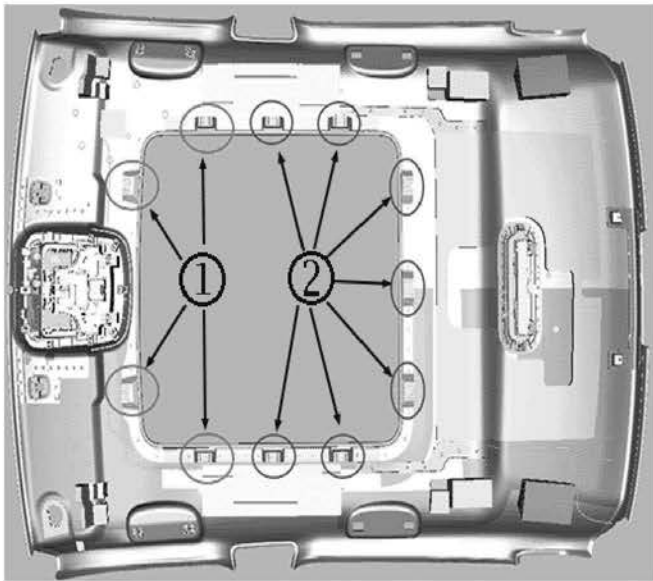
4528616

For vehicles displaying the condition it will be necessary to replace the headliner, but prior to installation, also add "double" layer spacers (1) to the single lock retainer (2) at some locations on the new headliner.



4528621

The original headliner should have contained a combination of single (1) and double (2) dual lock retainers.



4528626

Commonly, there should be four double dual lock retainers (1) at the front headliner opening, and seven single dual lock retainers (2) at the sides and rear. Transfer the existing double dual lock retainers and add the service part spacer listed below to all single dual locks, and transfer those. Ensure double dual locks secure the headliner around the entire sunroof opening.

Service Procedure

1. Remove the headliner. Refer to *Headlining Trim Panel Replacement (With Sunroof)* in SI.



4528628

2. Before installing the new headliner to the vehicle, transfer the double dual locks and transfer/add spacers as necessary to the single locks to ensure double dual locks secure the headliner around the entire sunroof opening.
3. Install the new headliner. Refer to *Headlining Trim Panel Replacement (With Sunroof)* in SI.

Parts Information

Description	Part Number	Qty
SPACER-HDLNG T/PNL	23486771	7 per vehicle

Warranty Information

For vehicles repaired under warranty, use:

Labor Operation	Description	Labor Time
1080378*	Headlining Trim Panel Replacement	3.5 hrs
Add	To Transfer Headliner Wiring Harness to New headliner	0.5 hr

*This is a unique Labor Operation for Bulletin use only.

Version	1
Modified	

GM bulletins are intended for use by professional technicians, NOT a "do-it-yourselfer". They are written to inform these technicians of conditions that may occur on some vehicles, or to provide information that could assist in the proper service of a vehicle. Properly trained technicians have the equipment, tools, safety instructions, and know-how to do a job properly and safely. If a condition is described, DO NOT assume that the bulletin applies to your vehicle, or that your vehicle will have that condition. See your GM dealer for information on whether your vehicle may benefit from the information.



WE SUPPORT VOLUNTARY
TECHNICIAN
CERTIFICATION