

Field campaign

Topic	Software update ABS (SC16/04)
Market area	Bentley: worldwide (2WBE),Hongkong-Macau (5HK)
Brand	Bentley
Transaction No.	2043640/7
Campaign number	EA42
Note	
Type	Pre-delivery & workshop service campaign
US code	

Vehicle data

Bentayga

Sales types

Type	MY	Brand	Designation	Engine code	Gearbox code	Final drive code
4V1*	2016	E		*	*	*
4V1*	2017	E		*	*	*
4V1*	2018	E		*	*	*

Chassis numbers

Manufacturer	Filler	Type	Filler	MY	Factory	From	To	Prod from	Prod to
SJA	***	**	*	*	*	000001	012954		

Documents

Document name
master.xml

Notes

▪ Repair instructions

Technical background

Update to limitspeed in reverse to 30kph

Remedy

Software update to ABS module (Brakes 1)

Customer notification

Please ensure that all affected vehicles are checked and repaired before delivery to customers.

If any customers have already taken delivery of an affected vehicle, please telephone them to inform them of the service campaign. Please ensure that affected vehicles are checked and repaired during the next service visit. Make a note of the required service campaign on the workshop order before it is signed by the customer.

If it is omitted to perform the required work during a workshop visit, notify the customer about the service campaign immediately.

You should also inform your new car sales department so that the vehicles affected can be checked and repaired immediately (and not just before sale).

Warranty accounting instructions

Warranty Type 790 or 710

Labour Operation Code 01 29 00 05

Damage Service Number EA42

Damage Code 00 66

Time 50 TU

Criteria ID 01

Genuine parts

.

Parts supply

Parts despatch control

.

Repair instructions

▪ Notes

Technical background

Update to limitspeed in reverse to 30kph

Check

If the vehicle is not already listed as repaired in the "Repair history" (ElsaPro), check for the campaign identification mark, yellow spot to the under bonnet battery charging post adjacent to the right hand bonnet hinge (see Figure 8), should neither be evident carry out the required work in accordance with these instructions

Genuine parts

.

Work

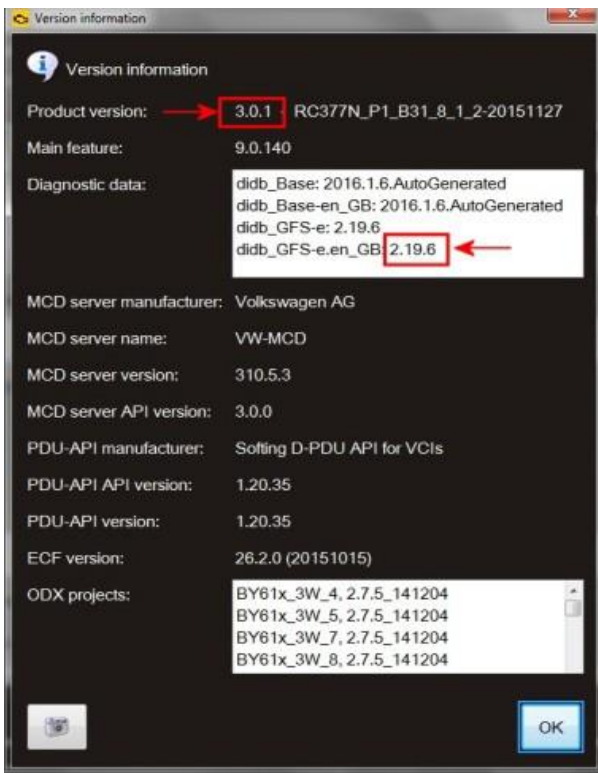


Figure 1

1. Check software on Bentley diagnostic tool, must be 3.0.1 Product version or higher and Diagnostic data: 2.19.6 or higher (see Figure 1)
2. Ensure a suitable battery charger is correctly connected to the vehicle electrical system for the duration of this procedure
3. Connect the Bentley approved diagnostic tool to the vehicle On Board Diagnostic (OBD) socket. Note: Hardwire connections should be used between the diagnostic tool and the OBD socket and when connecting broadband to the diagnostic tool
4. Switch on the ignition using the ignition key
5. From the diagnostic tool main desktop select Off board Diagnostic Information System
6. Select–Start diagnosis
7. Adopt correct vehicle identification
8. Select *guided fault finding* to check and clear the vehicle of any fault codes. NOTE: At this time when requested to *Make a Target/Actual comparison* do not perform this action select NO

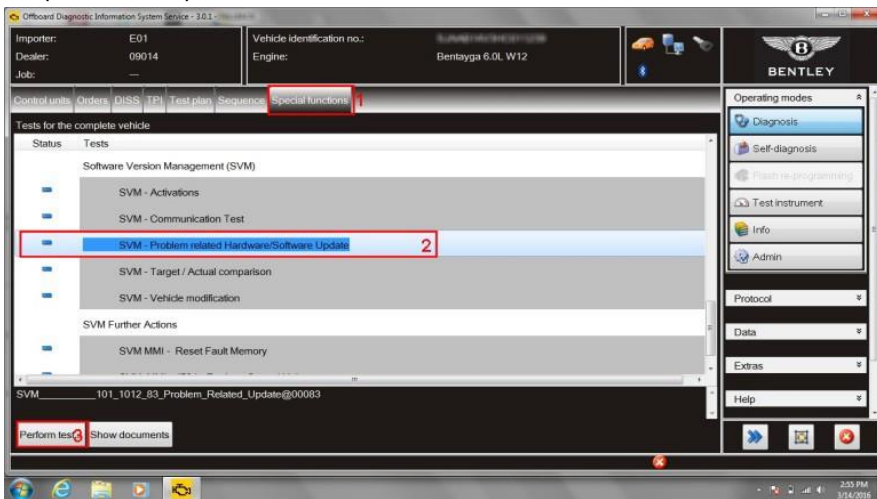


Figure 2

9. Select *Special functions* (1), Select *SVM– Problem related Hardware/Software Update* (2), Select *Perform test* (3) (see Figure 2)

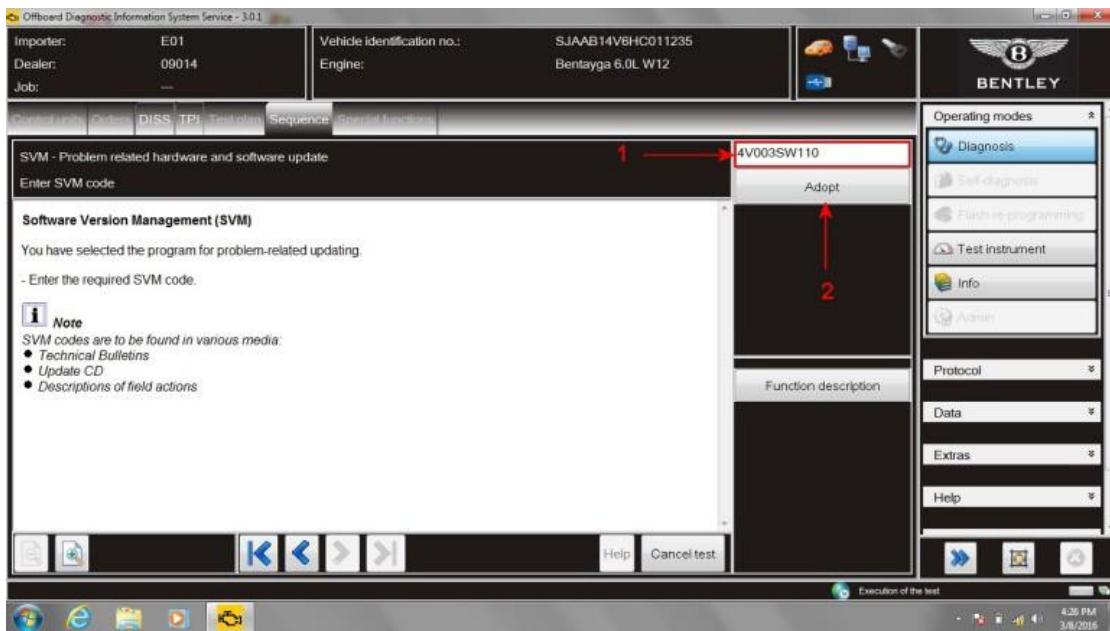


Figure 3

10. At SVM process screen enter (1) the specific SVM code **4V003SW110** and then *Adopt* (2) (see Figure 3)
11. If prompted enter your global user ID and password – follow screen prompts

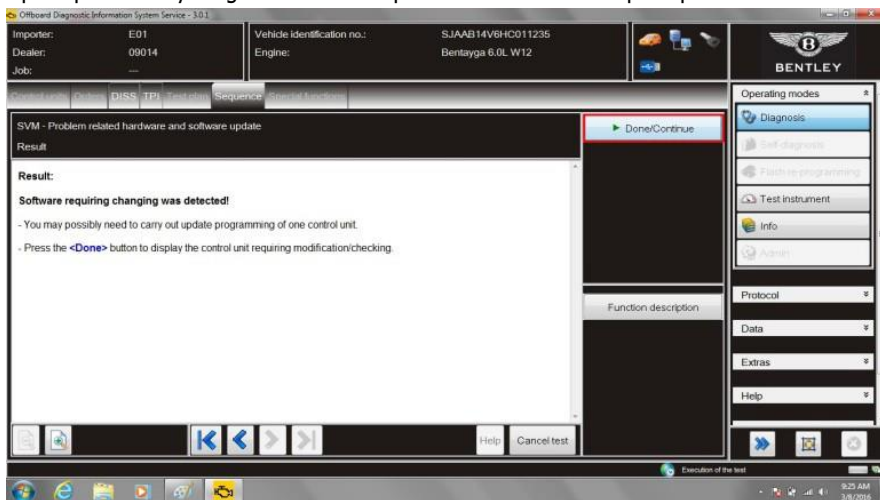


Figure 4

12. Once software that requires changing is detected select *Done/Continue* (see Figure 4). Follow prompts, the online connection will deliver the required software to the tester

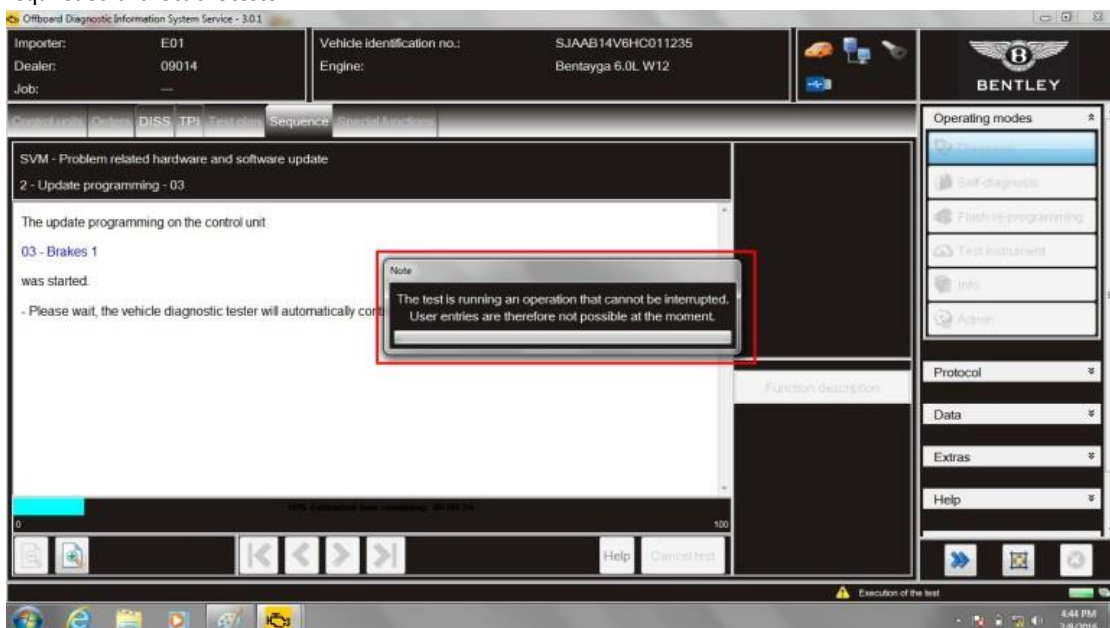


Figure 5

13. During update a progress bar will be displayed (see Figure 5)

14. Coding will automatically be performed on the module 03 -brakes1 by the tester

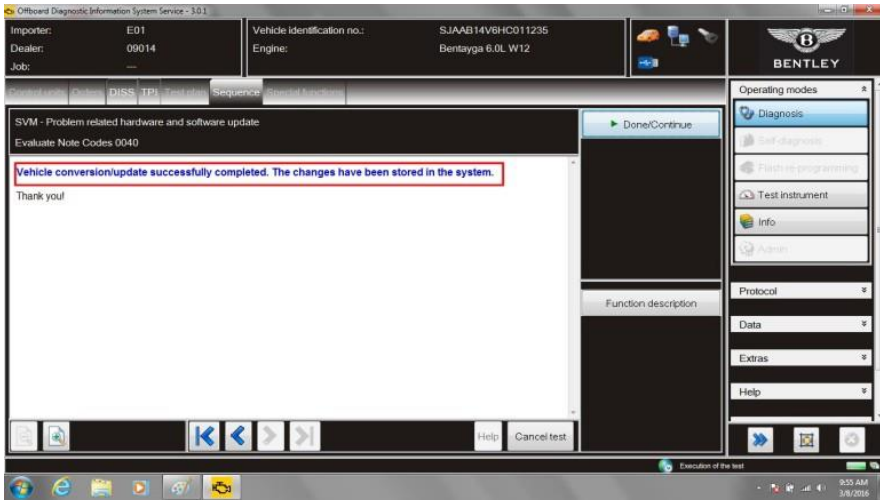


Figure 6

15. Once the update program has completed, figure 6, follow the screen prompts to performed the automatic SVM and complete the update
Note: At this stage if it is your intention to immediately perform a second software campaign on this vehicle then a manual SVM – Target/Actual comparison must be performed – operation 16

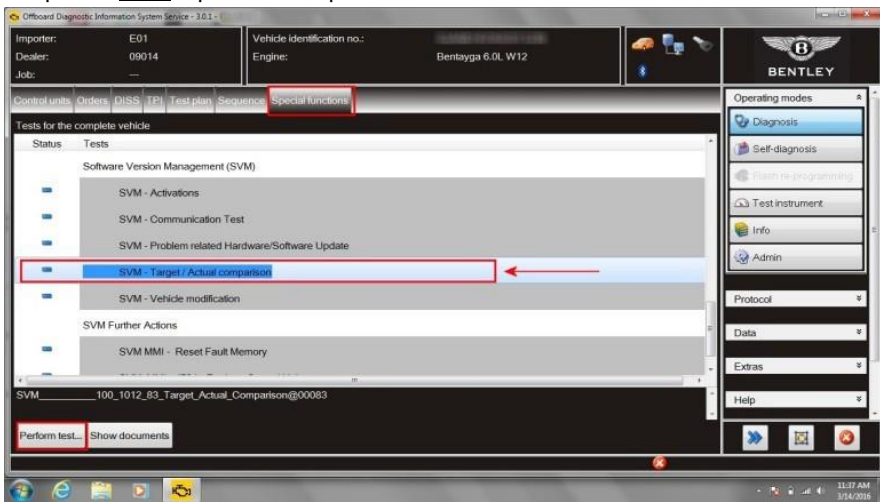


Figure 7

- 16. Perform SVM – Target/Actual comparison (see Figure 7)
- 17. Perform an ignition cycle
- 18. Use guided fault finding to clear any fault codes created as a result of performing this campaign

Identification



Figure 8

On completion apply a yellow campaign completion mark to the under bonnet battery charging post adjacent to the right hand bonnet hinge (see Figure 8)

▪ **Repair instructions** ▪ **Notes**