



Service Bulletin

File in Section: -

Bulletin No.: 16-NA-150

Date: May, 2016

TECHNICAL

Subject: During Remote Start, RKE Transmitter has Short Range

Brand:	Model:	Model Year:		VIN Breakpoint:		Engine:	Transmission:
		from	to	from	to		
Chevrolet	Cruze (VIN B)	2016	2016	Start of 2016 Production	Prior to 1G1BE5SM-9G7235708	All	All

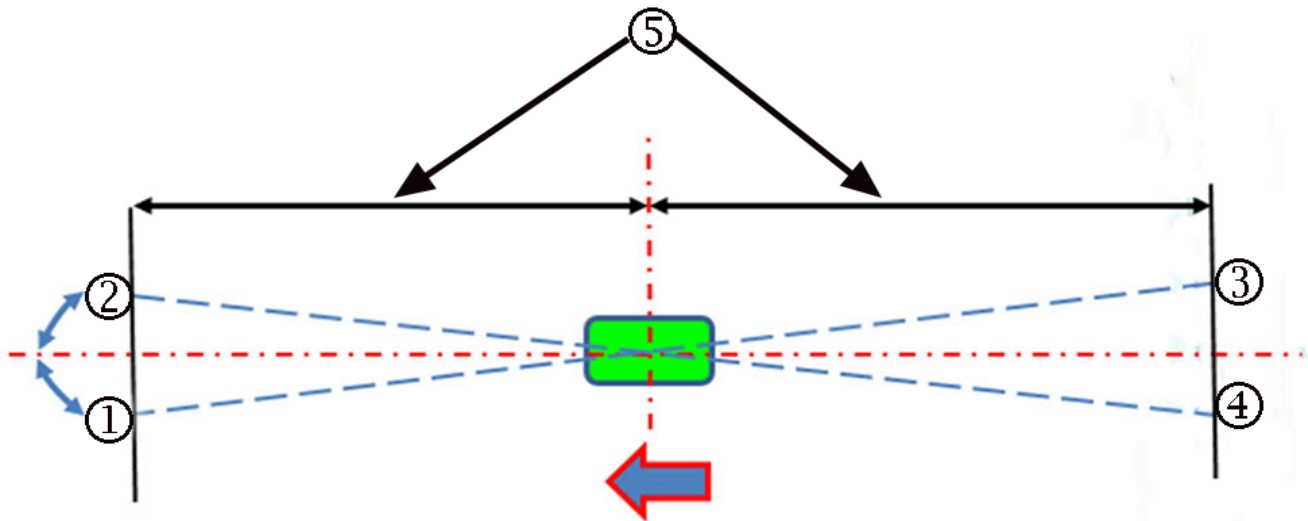
Condition	Some customers may comment on the RKE transmitter range of the remote start function being too short.
Cause	The cause of the condition may be electrical interference, which may degrade the remote signal and shorten the range.
Additional Options	Equipped with REMOTE START, ENGINE (RPO - BTV) and FREQUENCIES RATING-315 MHZ, LONG DISTANCE (RPO - XL7)

Correction

Note: Before conducting the range test, verify that the vehicle has a button switch on exterior door handle and remote start button on the RKE transmitter.

First verify the condition by performing a range test procedure following the steps below:

1. Park the vehicle in an outside parking lot, with the ignition off.
2. Perform a four point range test as follows:



4486462

Note: The test vehicle is symbolized by the green rectangle in the graphic above.

Tip: At a distance of 30 meters (100 feet), 10 degrees from vehicle center-line is approximately 5.3 meters (17.5 feet).

- 2.1. Standing at the center gap between the passenger doors, walk forward a distance of approximately 30 meters (100 feet) (5). Staying in a straight line to this distance, position yourself in front of the vehicle, at an angle approximately 10 degrees right of vehicle center-line (1).
- 2.2. Point the RKE at the vehicle maintaining the following positions:
 - Hold RKE with the buttons facing upward.
 - Keep elbow close to body.
 - Hold at a height of hip level.

Note: When button activations are recognized by vehicle, exterior lights will flash; one light for lock and two lights for unlock.

- 2.3. Waiting approximately 1 second between presses, press LOCK, UNLOCK, LOCK and UNLOCK.
- 2.4. If the button activations are recognized for all four LOCK/UNLOCK commands, record as **OK**; if not all four buttons were recognized, record as **Not OK**.

3. Repeat step # 2 at the same distance in front of the vehicle, but positioned at an angle approximately 10 degrees left of vehicle center-line (2).
4. Move to the same distance behind the rear of vehicle, and repeat step #2 positioned at an angle approximately 10 degrees right of vehicle center-line (3).
5. Repeat steps in # 2 at the same distance in rear of the vehicle, but positioned at an angle approximately 10 degrees left of vehicle center-line (4).
 - If all four locations record as **OK**, the vehicle is not affected with the range condition, and no further action is required.
 - If **ANY** of the four locations record as **Not OK**, the vehicle is affected, and the retrofit Service Procedure below must be completed.

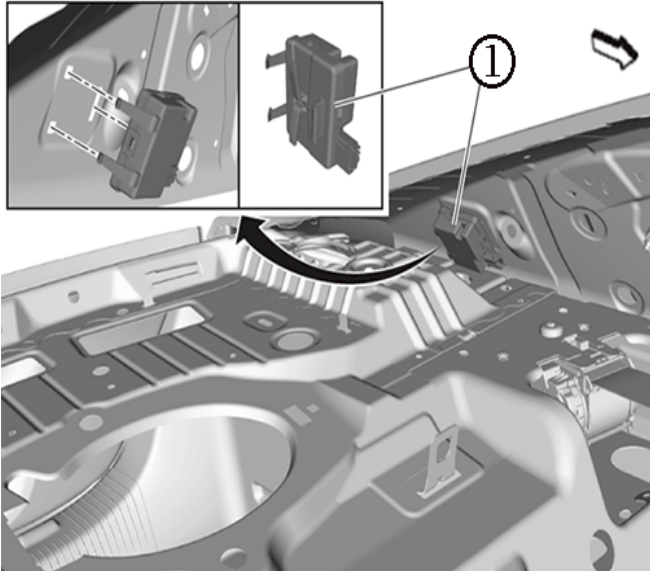
Service Procedure

Note: This retrofit will boost the remote system from a frequency rating of 315MHz (RPO – XL7) to 433MHz (RPO – XL8).

Retrofit the vehicle with the service parts listed below following these steps:

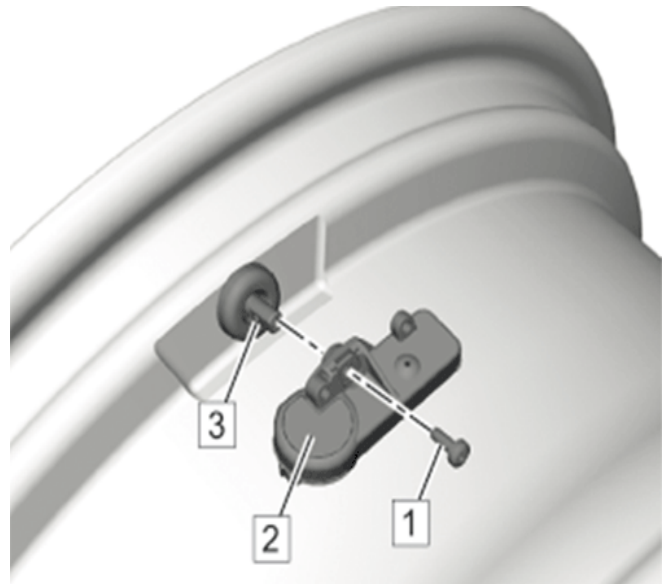
Important: Perform RKE transmitter replacement PRIOR to remote control door lock receiver replacement. Note that RKE buttons will not work at this time.

1. Replace the two RKEs. Refer to the appropriate *Key with Integrated Transmitter Programming* in SI.



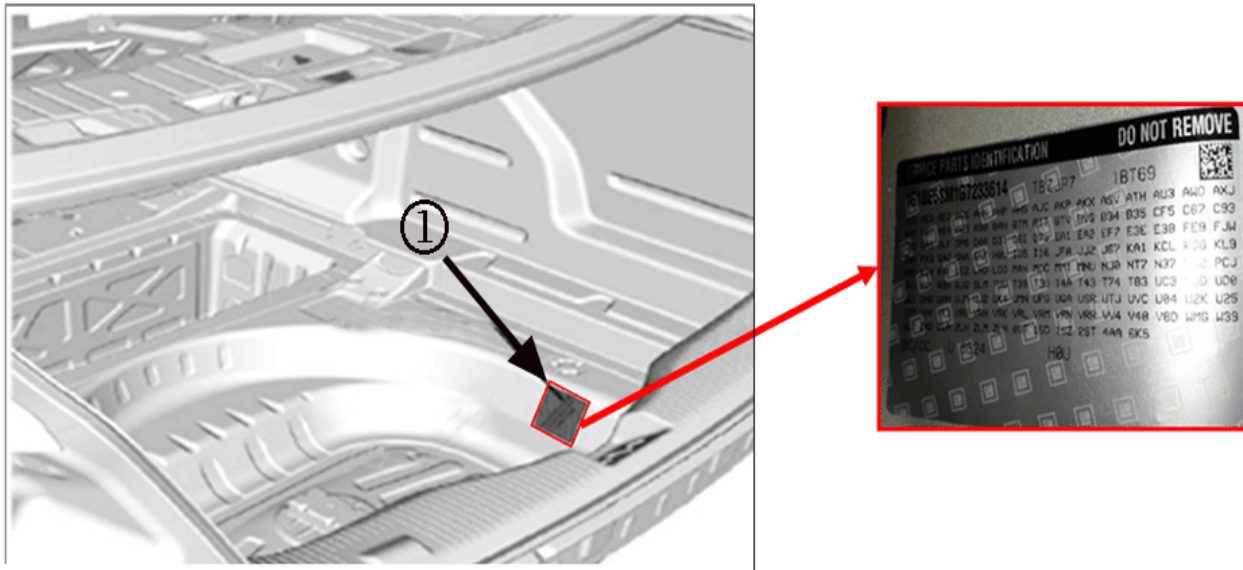
4509315

2. Replace the remote door lock function receiver (1). Refer to *Remote Control Door Lock Receiver Replacement* in SI.



4486467

3. Replace and relearn all four tire pressure sensors (2). Refer to *Tire Pressure Indicator Sensor Replacement* in SI.
4. Verify proper function of remote start.



4486470

5. Finally, update the frequencies rating RPO on the SPID label (1), following the steps below:
 - 5.1. Remove the trunk floor trim panel and locate the SPID label. Refer to *Rear Compartment Floor Panel Trim Replacement* in SI.
 - 5.2. Locate RPO - XL7 on the label.
 - 5.3. Using a black permanent marker, strikethrough "XL7", and write "XL8" on the label.
 - 5.4. Reinstall the trunk floor trim panel.

Parts Information

Description	Part Number	Qty
TRANSMITTER ASM-R/ CON DR LK & THEFT DTRNT	13508769	2
RECEIVER ASM-R/CON DR LK	13595511	1
SENSOR ASM-TIRE PRESS IND	13598773	4

Warranty Information

For vehicles repaired under warranty, use:

Labor Operation	Description	Labor Time
6480298*	Remote Start RKE Range Test	0.3 hr
6480308*	Retrofit Remote Frequency Rating (Includes Remote Start RKE Range Test)	2.4 hrs

*This is a unique Labor Operation for Bulletin use only.

Version	1
Modified	

GM bulletins are intended for use by professional technicians, NOT a "do-it-yourselfer". They are written to inform these technicians of conditions that may occur on some vehicles, or to provide information that could assist in the proper service of a vehicle. Properly trained technicians have the equipment, tools, safety instructions, and know-how to do a job properly and safely. If a condition is described, DO NOT assume that the bulletin applies to your vehicle, or that your vehicle will have that condition. See your GM dealer for information on whether your vehicle may benefit from the information.



WE SUPPORT VOLUNTARY
TECHNICIAN
CERTIFICATION