



# Service Bulletin

File in Section: -


Bulletin No.: 16-NA-148

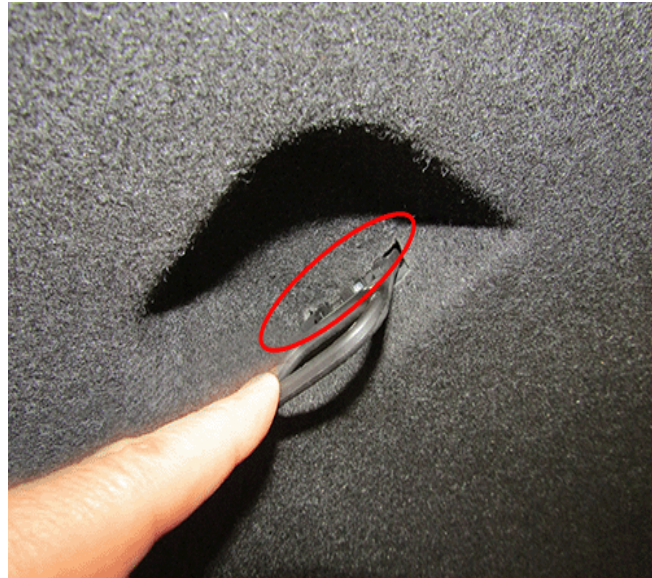
Date: May, 2016

## TECHNICAL

**Subject: Power Trunk Does Not Open When Activating the Key Fob or Touch-pad**

Brand:	Model:	Model Year:		VIN:		Engine:	Transmission:
		from	to	from	to		
Chevrolet	Malibu (VIN Z)	2016	2016			All	All

<b>Involved Region or Country</b>	NORTH AMERICA and ISRAEL
<b>Condition</b>	Some customers may comment that the power trunk will not open when activating either the Key Fob or the rear touch-pad. During attempted activation, a low volume audible click can commonly be heard.
<b>Cause</b>	 <p style="text-align: right; font-size: small;">4504495</p> <p>Whether positioned incorrectly at the opening in the trunk lid trim panel, or due to being pulled/pushed by items in the trunk, there may be interference between the ETR handle and the trim material.</p>



4504496

Interference from the trim can cause the handle and cable to bind. Any sort of preload on the ETR cable will not allow the latch to release when any of the electric switches are used.

#### Additional Options

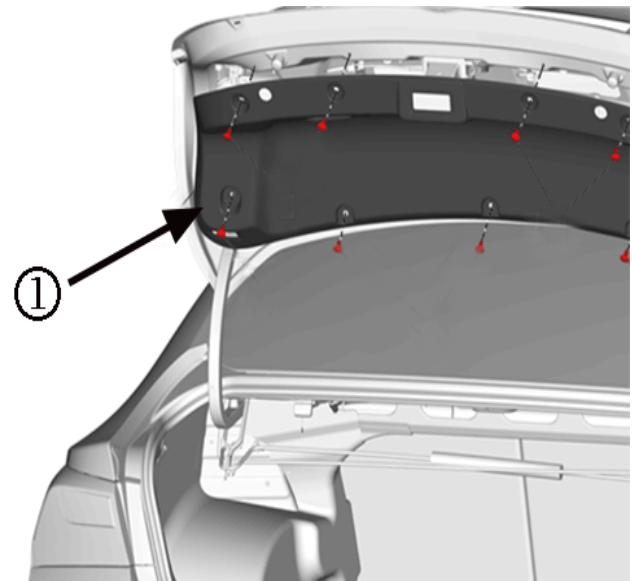
### Correction

If this condition is present, it will be necessary to enter the trunk through the rear seat access and pull the ETR handle. Refer to *Opening the Rear Compartment Without Electrical Power* in SI.

Once access is gained, move ahead to the Service Procedure below to correct the ETR handle/trim panel interference.

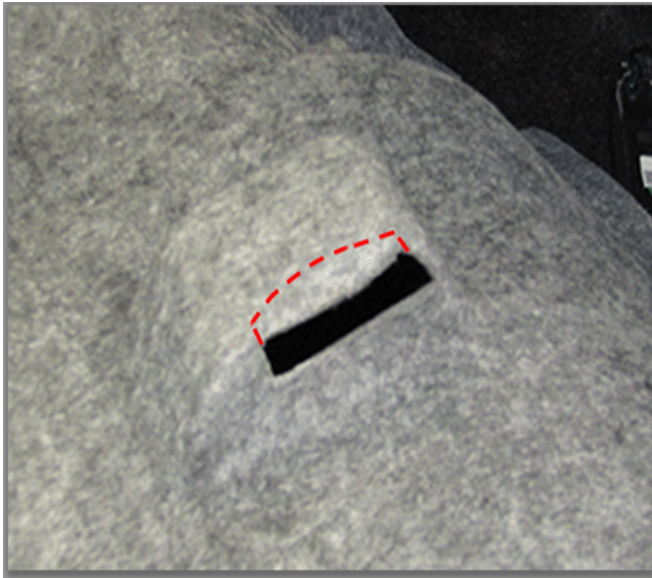
### Service Procedure:

The interference will be corrected by removing material from the handle opening in the trunk lid trim panel.



4504497

1. Remove the rear compartment lid inner trim (1). Refer to *Rear Compartment Lid Inner Panel Trim Replacement* in SI.



4504498

2. Using the image above as reference, on the back side of the trim panel, mark off and remove approximately 5–10 mm (0.20–0.40 in) from the outboard, raised side of the opening.
3. Reinstall the rear compartment lid inner trim. Refer to *Rear Compartment Lid Inner Panel Trim Replacement* in SI.
4. Confirm proper operation of the handle and also the power trunk release switches.

### Warranty Information

Labor Operation	Description	Labor Time
2080638*	Improve ETR Handle, Trim Panel Opening Clearance	0.3 hr
*This is a unique Labor Operation for Bulletin use only.		

Version	1
Modified	

