



**HYUNDAI** | NEW THINKING.  
NEW POSSIBILITIES.

**Technical Service Bulletin**

<b>GROUP</b>	<b>NUMBER</b>
<b>CAMPAIGN</b>	<b>16-01-021</b>
<b>DATE</b>	<b>MODEL(S)</b>
<b>APRIL 2016</b>	<b>Tucson (TL)</b>

**SUBJECT: TUCSON (TL) TOW HITCH REPAIR HARNESS (RECALL CAMPAIGN 142)**

**\* IMPORTANT**

**\*\*\* Dealer Stock and Retail Vehicles \*\*\***

Dealers must perform this Recall Campaign on all affected vehicles prior to customer retail delivery and whenever an affected vehicle is in the shop for any maintenance or repair.

When a vehicle arrives at the service department, access Hyundai Motor America’s “Warranty Vehicle Information” screen via WEBDCS to identify open Campaigns.

**Description:** The 2016 Tucson (TL) is available with an accessory trailer hitch and accompanying wiring harness. For affected vehicles with this accessory installed, when the vehicle’s engine is running and the brake lights are illuminated, if the turn signal is activated the trailer’s turn signal lamp may either:

- Remain continuously illuminated (not flash), or
- Turn off.

If an affected 2016 Tucson equipped with the Hyundai accessory tow package is driven with a trailer, it is possible that the trailer lights would not comply with Federal Motor Vehicle Safety Standards. A failure to notify other vehicles of the driver's intent could potentially increase the risk of a crash.

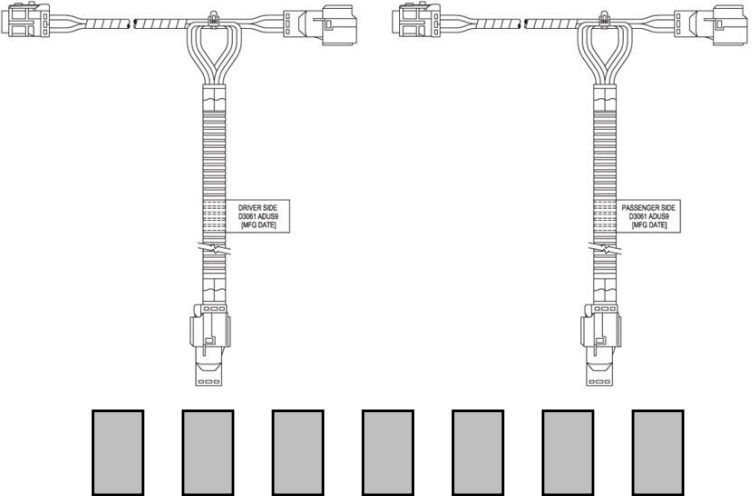


**Applicable Vehicles: Certain 2016 Tucson (TL) vehicles with Incandescent Tail lights and are equipped with a Genuine Hyundai Tow Hitch and Harness.**

NOTE: This campaign does not include Limited model Tucson vehicles.

Circulate To: General Manager, Service Manager, Parts Manager, Warranty Manager, Service Advisors, Technicians, Body Shop Manager, Fleet Repair

**Parts Information:**

PART NAME	PART NUMBER	REMARKS
<p><b>Harness Repair Kit</b></p>	<p><b>D3061 ADUS9 QQH</b></p>	<p><b>Kit includes both Driver Side Repair T-Harness and Passenger Side Repair T-Harness, plus 7 foam connector wraps.</b></p> 

**Warranty Information:**

OP CODE	OPERATION	OP TIME
90CP30R1	Tow Hitch repair, and function check	0.5

**NOTE: Submit Claim on Campaign Claim Entry Screen.**

**Service Procedure:**

**REPAIR PROCEDURE**

1. Verify the ignition key is removed from the ignition on vehicles with key type ignitions.



Verify the Engine Start/Stop button is OFF on Smart Key equipped vehicles.



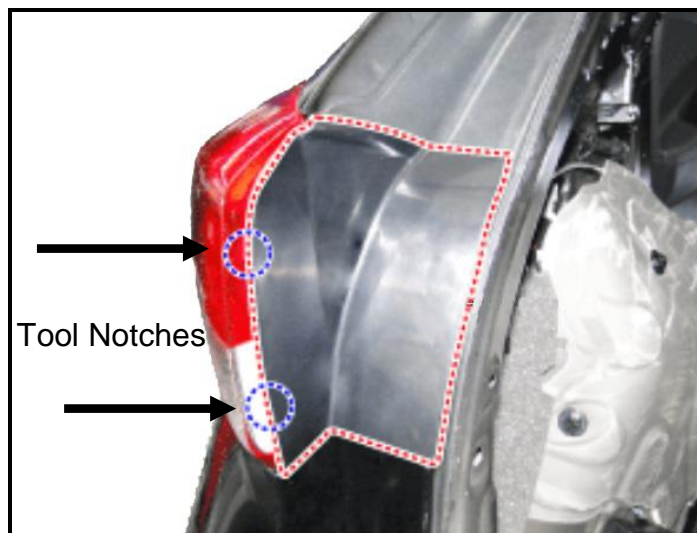
2. Open the hatch.

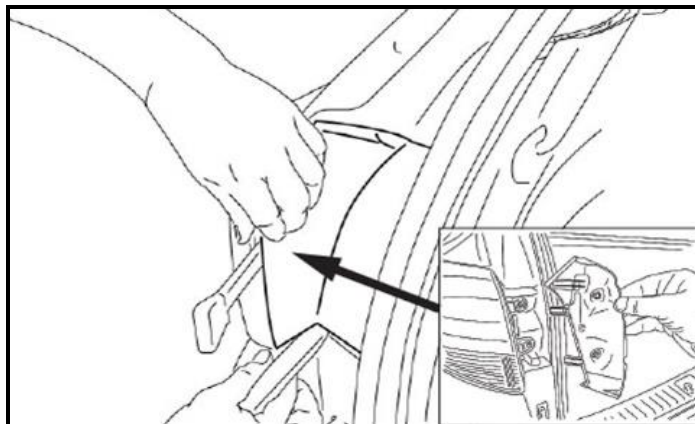


3. Look at the driver side tail light from the rear.

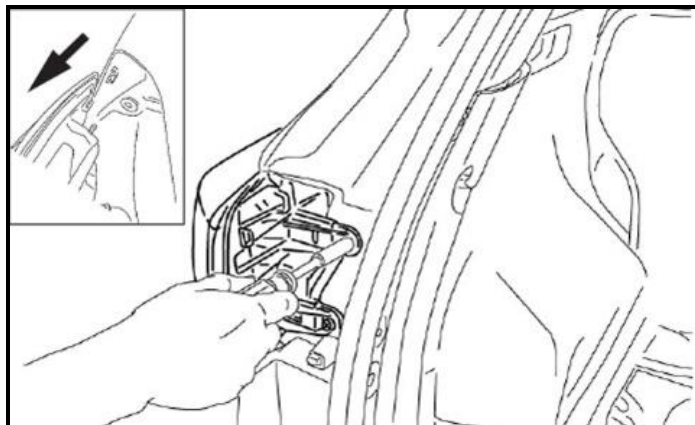
Identify the black plastic cover located near the driver side tail light as shown.

Pull the black plastic cover towards the rear cargo area to dislodge the four (4) plastic clips, and then pull the cover away from the vehicle to remove.





4. Remove the two (2) 10mm bolts securing the driver side tail light. Dislodge the tail light from the vehicle.

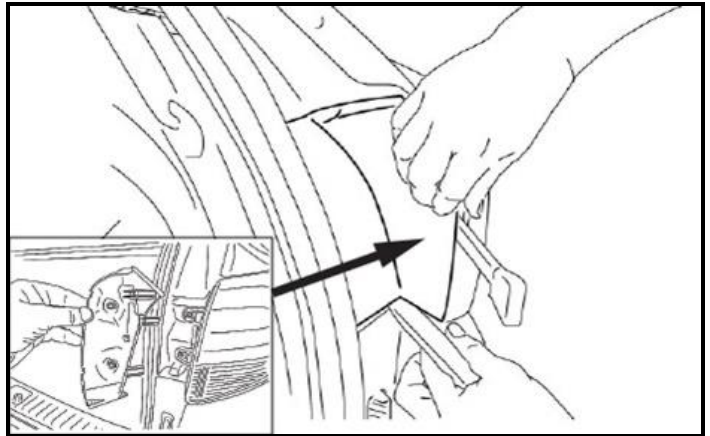


5. Disconnect the driver side tail light Tow Module Harness 6-pin Female connector from the tail light, then remove the driver side tail light from the vehicle.

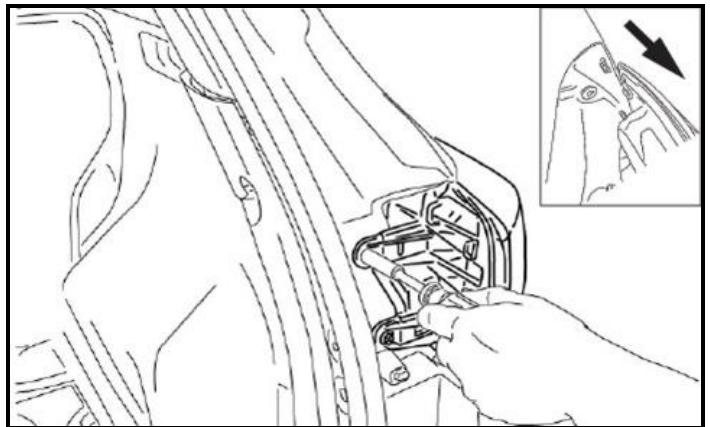


6. Identify the black plastic cover located near the passenger side tail light as shown.

Pull the black plastic cover towards the rear cargo area to dislodge the four (4) plastic clips, and then pull the cover away from the vehicle to remove.



7. Remove the two (2) 10mm bolts securing the passenger side tail light. Dislodge the tail light from the vehicle.



8. Disconnect the passenger side tail light Tow Module Harness 6-Pin Female Connector from the tail light, then remove the passenger side tail light from the vehicle.



9. Remove the foam tape from the passenger side tail light Tow Module Harness and Vehicle Harness connectors as shown.



10. Attach the passenger side Vehicle Harness 6-Pin Female Connector to the Repair T-Harness 6-Pin Male Connector as shown (A).

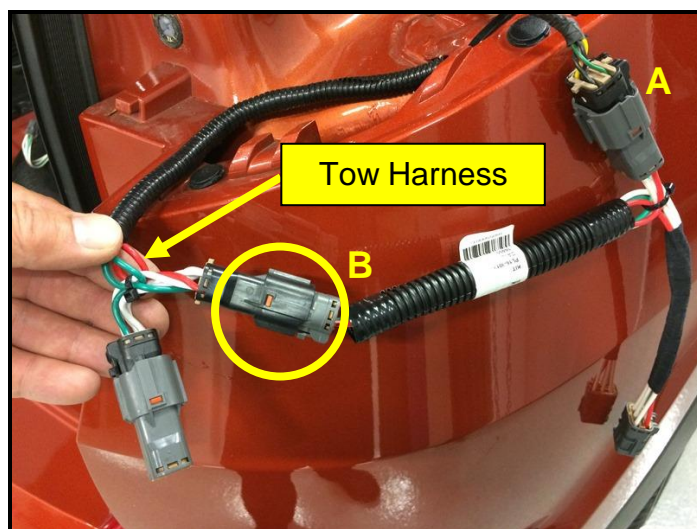
Remove the sealing cap from the 6-Pin Female Connector at the other end of the Repair T-Harness. Save the sealing cap for step 13.

**NOTE:** Be sure to use the part marked Passenger on the passenger side! If not, the trailer connector functions will not pass the test. (The Passenger side has White, Red and Green wires; the Driver side has White, Yellow and Brown wires).



11. Connect the Repair T-Harness 6-Pin Female Connector to the Tow Module Harness 6-Pin Male Connector as shown (B).

**NOTE:** The connector that originally had the sealing cap (at the end of the corrugated tubing) connects to the Tow Module Harness connector.



12. Install the Sealing Cap removed in step 11 to the 6-Pin Female Connector of the Tow Module Harness as shown.



13. Bundle the Tow Module Harness connector with Sealing Cap and the Repair T-Harness as shown.



14. Use 2 foam tapes to completely wrap over the Repair T-Harness corrugated tubing, Tow Module Harness connector and Sealing Cap as shown.



15. Tuck the assembled Repair T-harness behind the rear bumper cover as shown.



16. The Repair T-Harness should appear as shown.



17. Attach one (1) foam tape to the passenger side Vehicle Harness 6-Pin Female Connector and the Repair T-Harness 6-Pin Male Connector as shown.





18. Connect the Repair T-Harness 6-Pin Female Connector to the passenger side taillight as shown.



19. Before reinstalling the passenger side tail light, bundle the Repair T-Harness close to the tail light as shown.

**NOTE:** If the connector is reversed, it will pull the harness as the tail light is reinstalled onto the body.

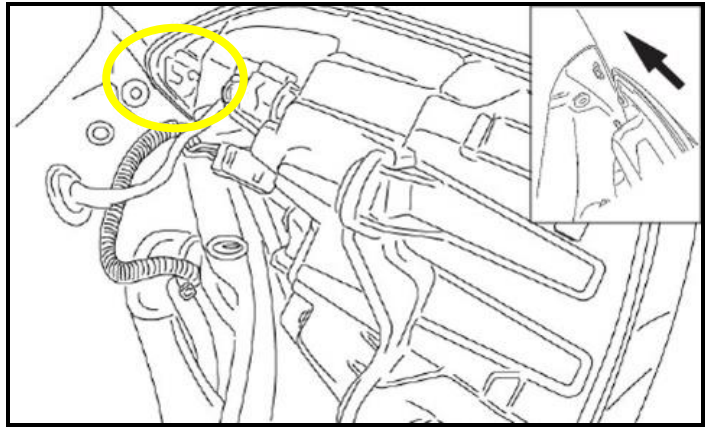
Optional: The connector can be tucked behind the bumper with the tow harness connectors.



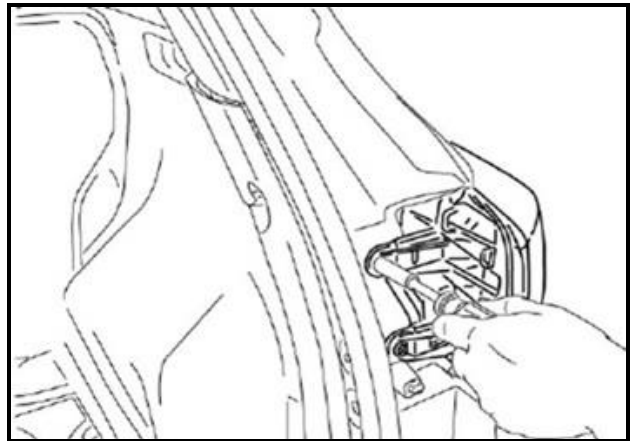
Optional



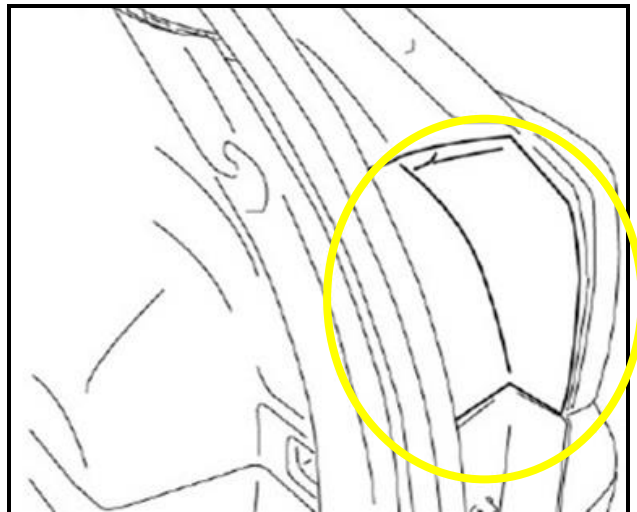
20. Reinstall the passenger side tail light onto the vehicle. Make sure the retention dowel is fully installed into the body of the vehicle.



21. Reinstall the two (2) 10mm bolts.



22. Reinstall the black plastic cover making sure all four (4) clips are fully engaged.



23. **Repeat steps 9 – 22 for the driver side of vehicle.**

NOTE: Be sure to use the part marked Driver on the Driver side! If not, the trailer connector functions will not pass the test. (Driver side has White, Yellow and Brown wires).

**FUNCTION CHECK**

1. Turn the ignition ON and confirm the vehicle rear brake lights, tail lights, and turn signals operate correctly.



2. Using a test light or voltmeter, test the 4-Way Flat Connector at the tow hitch for tail light, brake light, right turn signal, left turn signal, and hazard indicator circuits.



Function	Proper Operation
Tail Light	Tail/Side Markers <b>ON</b>
LH Turn	LH Turn/Stop <b>FLASHING</b>
RH Turn	RH Turn/Stop <b>FLASHING</b>
Brake Lights	Both Turn/Stop <b>ON</b>
Hazard Lights	Both Turn/Stop <b>FLASHING</b>
Brake & LH Turn	LH Turn/Stop <b>FLASHING</b> , RH Turn/Stop <b>ON</b>
Brake & RH Turn	RH Turn/Stop <b>FLASHING</b> , LH Turn/Stop <b>ON</b>

